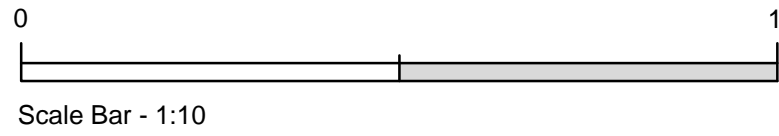
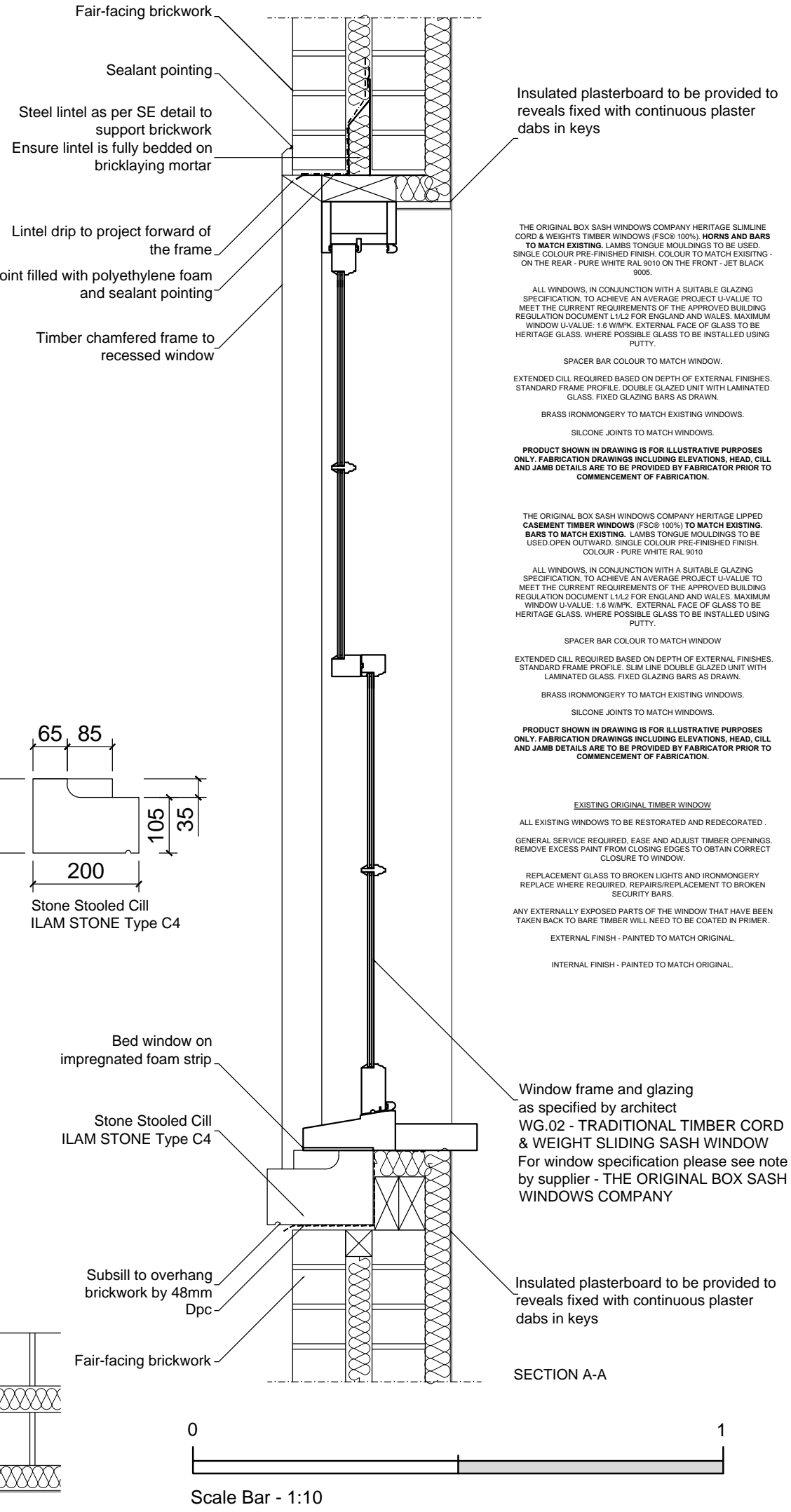
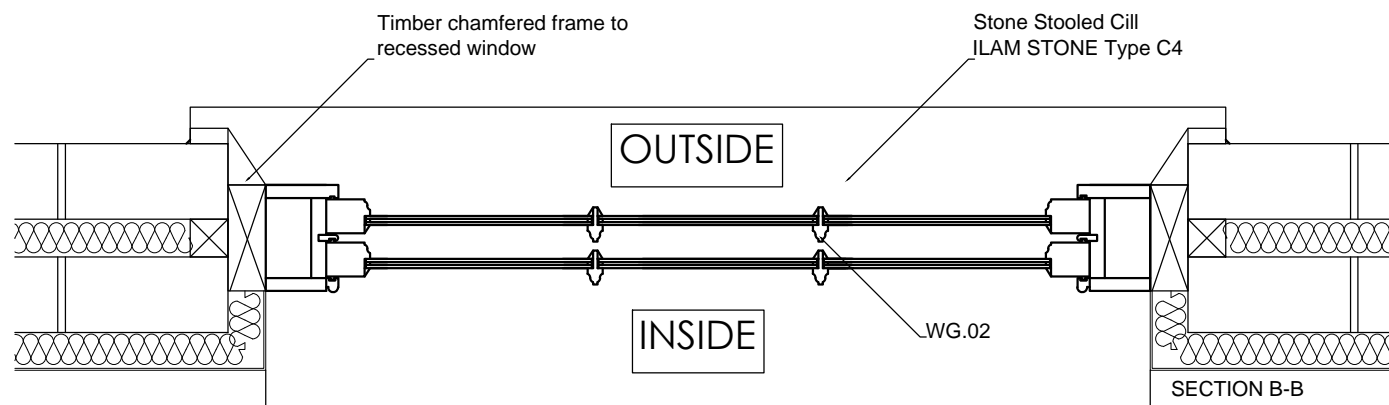
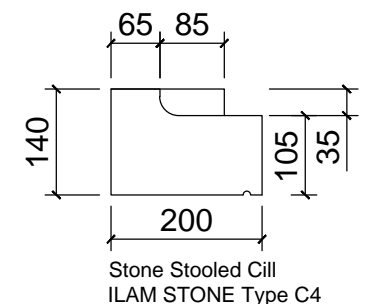
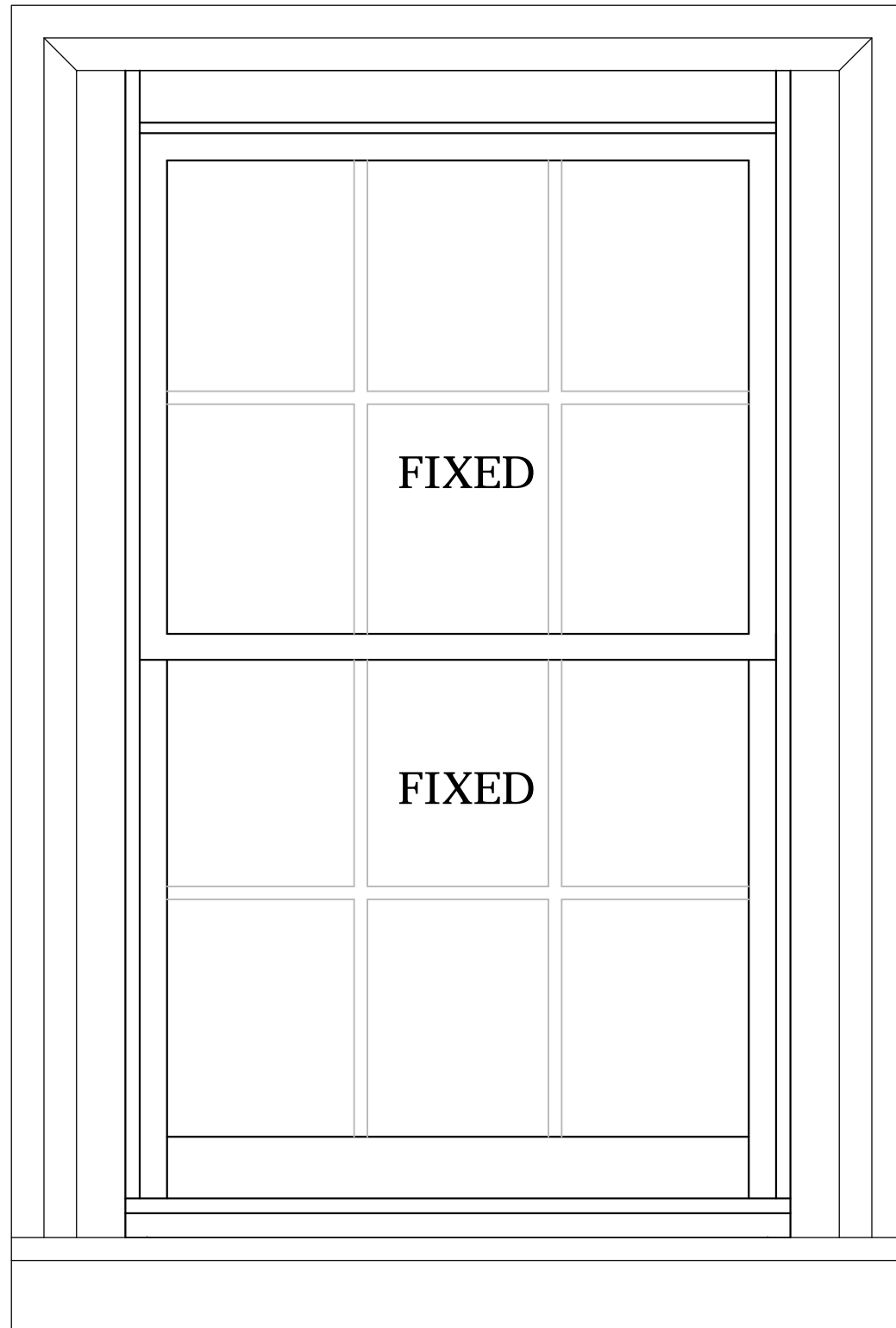


ELEVATION AS VIEWED FROM OUTSIDE



THE ORIGINAL BOX SASH WINDOWS COMPANY HERITAGE SLIMLINE CORD & WEIGHTS TIMBER WINDOWS (FSC® 100%) **HORNS AND BARS TO MATCH EXISTING**. LAMBS TONGUE MOULDINGS TO BE USED. SINGLE COLOUR PRE-FINISHED FINISH. COLOUR TO MATCH EXISTING - ON THE REAR - PURE WHITE RAL 9010 / ON THE FRONT - JET BLACK 9005.

ALL WINDOWS, IN CONJUNCTION WITH A SUITABLE GLAZING SPECIFICATION, TO ACHIEVE AN AVERAGE PROJECT U-VALUE TO MEET THE CURRENT REQUIREMENTS OF THE APPROVED BUILDING REGULATION DOCUMENT L1/L2 FOR ENGLAND AND WALES. MAXIMUM WINDOW U-VALUE: 1.6 W/M²K. EXTERNAL FACE OF GLASS TO BE HERITAGE GLASS. WHERE POSSIBLE GLASS TO BE INSTALLED USING PUTTY.

SPACER BAR COLOUR TO MATCH WINDOW.

EXTENDED CILL REQUIRED BASED ON DEPTH OF EXTERNAL FINISHES. STANDARD FRAME PROFILE. DOUBLE GLAZED UNIT WITH LAMINATED GLASS. FIXED GLAZING BARS AS DRAWN.

BRASS IRONMONGERY TO MATCH EXISTING WINDOWS.

SILICONE JOINTS TO MATCH WINDOWS.

PRODUCT SHOWN IN DRAWING IS FOR ILLUSTRATIVE PURPOSES ONLY. FABRICATION DRAWINGS INCLUDING ELEVATIONS, HEAD, CILL AND JAMB DETAILS ARE TO BE PROVIDED BY FABRICATOR PRIOR TO COMMENCEMENT OF FABRICATION.

THE ORIGINAL BOX SASH WINDOWS COMPANY HERITAGE LIPPED CASMENT TIMBER WINDOWS (FSC® 100%) **TO MATCH EXISTING. BARS TO MATCH EXISTING**. LAMBS TONGUE MOULDINGS TO BE USED. OPEN OUTWARD. SINGLE COLOUR PRE-FINISHED FINISH. COLOUR - PURE WHITE RAL 9010

ALL WINDOWS, IN CONJUNCTION WITH A SUITABLE GLAZING SPECIFICATION, TO ACHIEVE AN AVERAGE PROJECT U-VALUE TO MEET THE CURRENT REQUIREMENTS OF THE APPROVED BUILDING REGULATION DOCUMENT L1/L2 FOR ENGLAND AND WALES. MAXIMUM WINDOW U-VALUE: 1.6 W/M²K. EXTERNAL FACE OF GLASS TO BE HERITAGE GLASS. WHERE POSSIBLE GLASS TO BE INSTALLED USING PUTTY.

SPACER BAR COLOUR TO MATCH WINDOW.

EXTENDED CILL REQUIRED BASED ON DEPTH OF EXTERNAL FINISHES. STANDARD FRAME PROFILE. SLIM LINE DOUBLE GLAZED UNIT WITH LAMINATED GLASS. FIXED GLAZING BARS AS DRAWN.

BRASS IRONMONGERY TO MATCH EXISTING WINDOWS.

SILICONE JOINTS TO MATCH WINDOWS.

PRODUCT SHOWN IN DRAWING IS FOR ILLUSTRATIVE PURPOSES ONLY. FABRICATION DRAWINGS INCLUDING ELEVATIONS, HEAD, CILL AND JAMB DETAILS ARE TO BE PROVIDED BY FABRICATOR PRIOR TO COMMENCEMENT OF FABRICATION.

EXISTING ORIGINAL TIMBER WINDOW

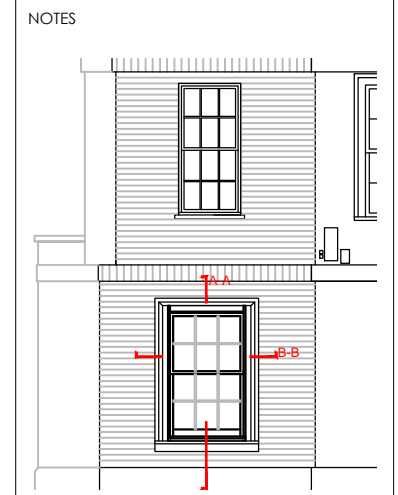
ALL EXISTING WINDOWS TO BE RESTORATED AND REDECORATED. GENERAL SERVICE REQUIRED. EASE AND ADJUST TIMBER OPENINGS. REMOVE EXCESS PAINT FROM CLOSING EDGES TO OBTAIN CORRECT CLOSURE TO WINDOW.

REPLACEMENT GLASS TO BROKEN LIGHTS AND IRONMONGERY REPLACE WHERE REQUIRED. REPAIRS/REPLACEMENT TO BROKEN SECURITY BARS.

ANY EXTERNALLY EXPOSED PARTS OF THE WINDOW THAT HAVE BEEN TAKEN BACK TO BARE TIMBER WILL NEED TO BE COATED IN PRIMER.

EXTERNAL FINISH - PAINTED TO MATCH ORIGINAL.

INTERNAL FINISH - PAINTED TO MATCH ORIGINAL.



FOR PLANNING PURPOSES ONLY. NOT FOR CONSTRUCTION

01	NOV23	ISSUED FOR PLANNING	SL
REV	DATE	DESCRIPTION	DRAWN
CLIENT MR R JAGDEV			
PROJECT 109 HIGH STREET ETON			
DRAWING TITLE PROPOSED CHAMFERED WINDOW			
STATUS FOR PLANNING			
PROJECT No 2577	DWG TYPE PL	DWG No C413	REV 01
SCALE 1:10@A3	DATE OCT' 2021	DRAWN CP	CHECKED -
CONTRACTOR TO CHECK SITE DIMENSIONS AND REPORT ANY VARIATIONS OR OMISSIONS TO LEWANDOWSKI ARCHITECTS. THIS DRAWING IS COPYRIGHT OF LEWANDOWSKI ARCHITECTS AND MUST NOT BE REPRODUCED OR USED WITHOUT PERMISSION.			
130 HIGH STREET, ETON, WINDSOR, BERKSHIRE, SL4 6AR. T. 01753 620700 F. 01753 620621 www.lewandowskiarchitects.com			