



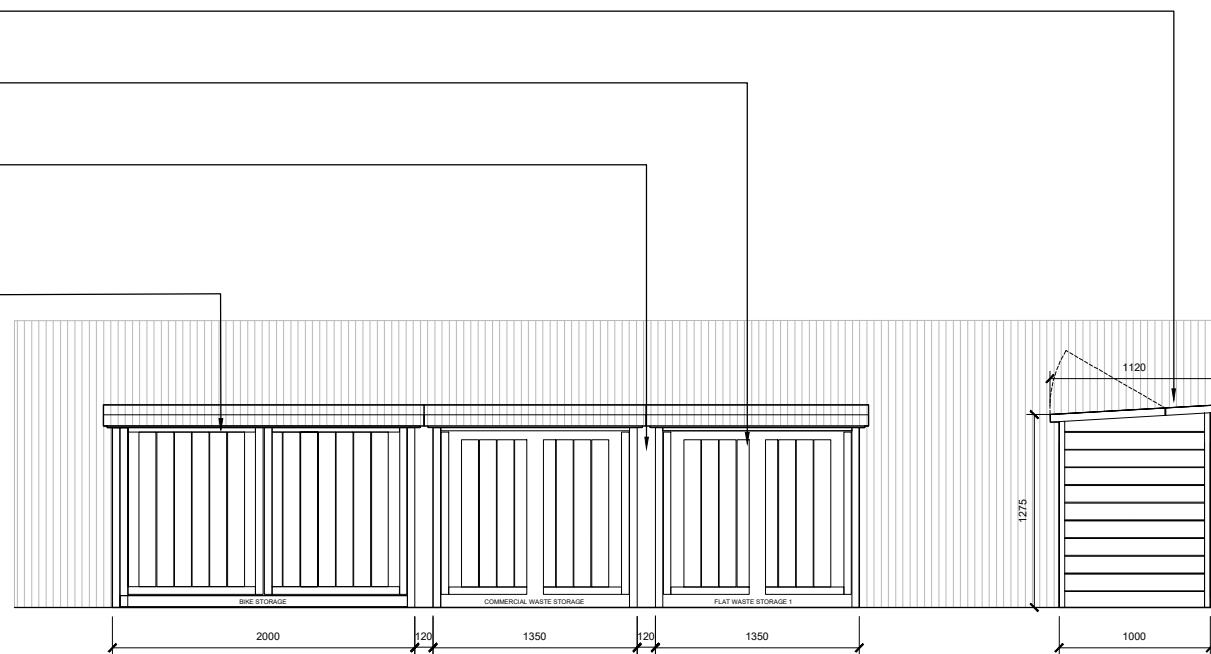
Figure A. Image illustrating that individual storage units can be connected together using a panel. All storages Manufactured by the BikeShedCo.

The BikeShedCompany Bike store
2000 x 1000 x 1335 mm
for shared use, suitable for storing 3
adult bikes.

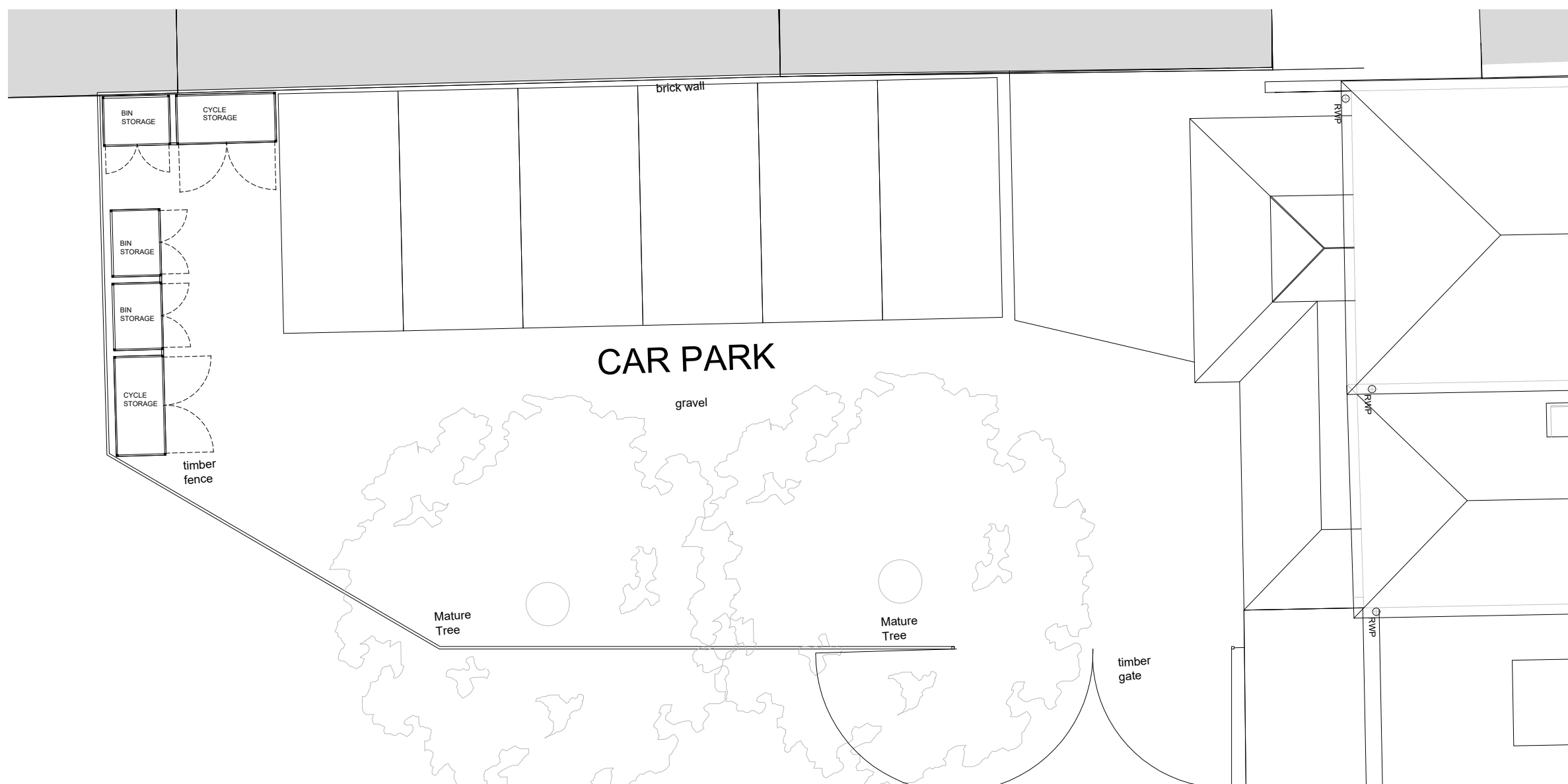
The BikeShedCompany Bin Store
1350 x 1000 x 1335 mm for 2x240L
Wheelie Bins.

Panel used to join the stores together.
See figure 1 for additional info.

The BikeShedCompany Bike store
2000 x 1000 x 1335 mm
for shared use, suitable for storing 3
adult bikes.



Front Elevation 1:50@A3



Proposed Storage Location 1:100@A3

NOTES

01	APR/23	ISSUED FOR PLANNING	DZ
00	MAR/23	ISSUED FOR PLANNING	DZ

REV	DATE	DESCRIPTION	DRAWN
CLIENT			
MR R JAGDEV			
PROJECT			
109 HIGH STREET			
ETON			
DRAWING TITLE			
PROPOSED BIN AND CYCLE STORE			
STATUS			
FOR PLANNING			
PROJECT No	DWG TYPE	DWG No	REV
2577	PL	B126	01
SCALE	DATE	DRAWN	CHECKED
1:50@A3	March'23	DZ	DL

CONTRACTOR TO CHECK SITE DIMENSIONS AND REPORT ANY VARIATIONS OR OMISSIONS TO LEWANDOWSKI ARCHITECTS. THIS DRAWING IS COPYRIGHT OF LEWANDOWSKI ARCHITECTS AND MUST NOT BE REPRODUCED OR USED WITHOUT PERMISSION.

130 HIGH STREET, ETON, WINDSOR, BERKSHIRE, SL4 6AR.
T. 01753 620700 F. 01753 620621
www.lewandowskiarchitects.com