

T H A M E S V A L L E Y

ARCHAEOLOGICAL

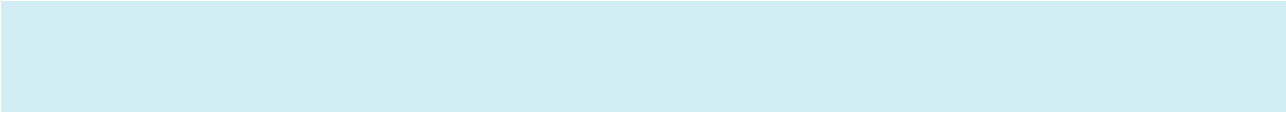
S E R V I C E S

**Little Tudors, 14 Church Hill,
White Waltham, Berkshire**

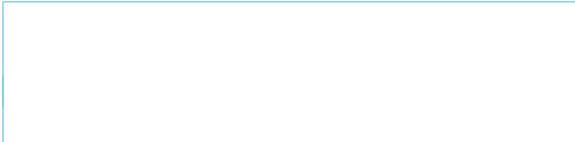
Heritage Statement and Building Recording

by Genni Elliott

**Site Code: LTWW23/100
(SU 85485 77548)**



!"



\$%&

-*" #

6\$&9%

;

.)))

29'3/.≡ -!*)1>

2 3 95 *% -))?" 4 /

2.. / /\$%&' +3 -)!*)

?) .) 4 -,) ," ((/

.. *. . ,) -

.. @. / ,

5 .!(6

I+&? *) "1 6

- 5 5

7 B : 9\$!\$3 !*6 .. /

6'

1) 4)?) 29

3/ ,,) *)?*6

) 29/\$3 =)! 2 **3

.. 2"B/().. 5*%F > /

- < +66

27. / /\$%&' +3 -)!*)

?) .) 4 -,/

? *) "1 6

- 5 5 7

1 \$2B: 9\$!\$3) , , ,

.) 1 .) 1 , . . /(

0 ..). .1 .) *. .))) -

. *)) * *-)) -*. ./

1) B: 9\$!\$3 8

J7 .) 1) , .. .
 11 . *) . 1* , 1 -
 - . .) / 6

∴ D D

JD (. . . 0 ..
 -)) *)) * - - *
 / 1) - .. 6.
)) . .) / 7
 1 1 1 -
 ... 5 , * / , 1
 .. . ,
 . 0 1. - ... 4-
 , *) 1 /
 JD .) * .) *
 *) - * . 2 - * 1 .))
) 3) H 1 * * 5 / *
 , .) ..
 1) , 6 1 * .)
 .. / 6

7 J 6) 2B: 9\$ \$3

J7 - . .) 1))
 . -) / (
) - * * 2 3 6

J> 6 2B: 9\$ \$+3 *

J ? : !
 : " !) 1 7 1
 / 6

J7 6 2B: 9\$ \$3) , 8

J, -) . * 1
) . 1*) 5 . 1 . / 6

.))) 8

JD (. . .) 8
 J3 - *)) .
 1 , 1 <
 J-3. 1 - 1) -
 1* <
 J3 - *) , 1 . 1 -
 1 / 6
 JD (.) .. 1 .))
 , - 1 6 1 2 .
 , - 3 . 1) , *
 - -) /
 JS' ' / 7 *))) 2
) 1 , 3 0 1
 =) / -) 8
 3 ((- ((. - 5 <

-3)) -* . . ,
 -) (((K- (((K
 -, *5 . + /
 JS' /.. 1. , - 2))
)3 .) -
 - *1 - . -
 -) ,)) , ..*8
 J3) .1 -) <
 J-3 1-)) -)
 ... , - 1 <
 J3 1 -* 4)) .) . -
 , . -* . - <
 J 3 , -*) - - /
 JS' \$/1 . .. , -))
 , . . --)) ..
 , 1- /
 JS' %))) ..)) 4 -
 .. / (, .. *
 *)) 4 - = , -0 1
) *)) /6

∴ \$0 . *) 1
 - 1 - *)) .)
) 8

JS' /. 0 1. 1)
)) * - 2, * .3 ..
 . . 1 2 *1 3. - *
 - / , 1 * 1) . -)
 , - . /6
 JS' +/ .) ..) , 1. ,
 1 7 ,)
 - 1) / : . . 1)
 . 1 - 2, - 1) 3 -
) 1 - */6
 JS' /B) 17, * -
) /) - 2 3, . 1 -
)) 1 7 -
 - .. \$' - .. \$'
 ... 1))))
 -)) 1 7 , /6

(. .) 1. . . J) 6))

2B : : 9\$ \$M\$38

= 1)) -) /
 * /) 1 *)
 6 . * . -) /9
 1 - , 6) F 1 N .)
) /6

, J 6) 2B: 9\$ \$38

= , 5 / (5) 5 *
 11 / #) * . 1 1

-)) *)-*.)
*- /6

: 2 1 3/100), -

- 8

J23 *=)523

J2-3*-= ,)- ,)5-
) .) -)P *D -.) - /6

!*) ? 6 : \$ %\$ '0027 . 9- * '\$\$\$3

2 ? : \$ ' \$\$) , 1 .*8

- '>>+
J/ 1 , - 1 ...
) /1 .. , -0 ,*. 1
..)) 2 4
3 .)) 1 /
\$/ .- , ,,
)) 2, 4 3 , -
. , =) , .*
%) , - / .1 - -
, - ., -0
/7.) , , * 1, -0
4 /
/7.) , , *-) . - *
,)) . ,
...) 1-#6

,

f) . ,

- 55

7 \$ \$3 6 . - /

)) , B: 9) .1 -# 2\$ 3

2\$ B- ,) , 8

#1 1 , 1) .) . *1 - .
1 */
1, 1) , * , ... 1 .))
- .. / (- 1 1/
7 1, 1) , * , ... , *
) ./
1 , 1) .) . . ,
) ,) 15 . #

7 1) , # 2\$ 3

: B% 8 , . 1) *--

. 1 1/

: 1 2D+S3 * ()))

. - ..- .)* /

7)F 1* .),

1.)- / .1-) , * 1)

! 0 6 +) 29/ % ,)-) ,

.. - / 5- . *F F*

)'D 3 -) - - /

) . 1)) %.) 29 3 ,

-) / -) ,) . #

.. *) 2)% 5 .

D / 1 -)-- . -*;

)/D # F 1*.293, .

.).. */7) -)

. 11 . *- , /

,

())) . .. *

- ..)- , -*

)1%2#\$'+<! 2#3D3 ,

-* () 2) 7\$ \$3/ 1*, -*" # D

P '\$\$% . *)- 6 1. . 1..

1*.*) 1.)

) . /- - ..* ,

27.. 53 9 ,) 1)..

7.. 5.1)) . ./

? 6FIJKM

:

2/3) 4-* , 4 *)-) ..)

-) , , *

1 */)

) = /7) * * / - * 0 Q

.- , , . * - * *

0 Q ,) 4 /

2) 31 2/3)-. ,, /?)

. - - 1) . ,))/- 11

, ..5)' 2 \$T3/) 4 .

) = *) , --, ..5 * 2 \$T3

..5 * *) . - * 2 / \$/

) . . - 2 : / % / .) , ,

) . / , , , , 1 - *) . 4

= * - 1 . 4 .)

- / , , , 1 - 1

, , / - 5 , , / 7) , , ,)

,,.) - 5) ,) / , ,

Q 1 -) . 4) /

)) =) - 5) / , , ,

) / = * -)) , * . ..

- / 7 .) - - .) .)

- / .) . * . 4 * .))

,) / - - . * . 4 .)) 4

))

- 29 / < / 3 * - - * = / + ,

)) * -)) 1 - * / : *) - 5)

) / 7 .) 4 2 : / 3 / . . . -

4 - / . . . 4 1 -

, - / 4 . , . . - * ,)

, .) - - , / 7 . . . - / . . .

) , - , , . 5 D) *

- / -) , * . .))

- 5) -))) /

231 2:/ +3--), -
 ,)- , .)- / ,))
 - , , , - , /)-)
 , , - ,) , - , /) -54 ,
 , . . . / 1 -
)/ .)4 1) , /
 .. 1- .)- *1/
 . .. - 5 , -* . .), /
 * , Q. /7)1 , ,
 .)), - . /
 , -) * . = - 1-5 *
 ;
 " 929 3
 (*)1 , , -44- * .
)- / () --* ,) .
 , * , 1 , /)
) - . , 1 . 5 *2: / \$3 Q.
 *2:/ 3/7. -) *- +', . . . ,
 5. 1 * . */) /
 # , , 1 . . - ,) 4)
 , .. 1 . 2/3' . - ..
 - . 1 2 D '3/ . .. -
) * - /7 1 - . - , . . . -
 -/
 1 , . , -* /7 , , . ,
 , / , - , 1 - , , , - - , 4
 -) 2/3 (, 4 /5 ,)
 1-5*/ ,)) . ,
 = , *2:/3). * -) - . . 5*
 \$2: / \$3') .)4 - , . * . 4

, /* * .))/
 ,) = . M ,) 2 : / % -) ,
 1 . . / , - - . = * 7 =
 ,) =) = * 1 1 . .) 2 : /
 3 / 4 , .. - 1)) , * , , /
)) - =) . 2 : / 3 /
 .) - * .) - * \$ Q) - *
 .. 5 * 0 Q /) 5 , , 1 - .
) . - , 1 *) 5 * , 1 - / - ,
 . * 1 - - - , , , - 2 : /
 + 3 2 / 3 / - . . 1 . * - * ;
 /) . 2 / 3 ,) . 1 <
 - - Q . /
 1 - , * - . M , - - 2 / D 8 / 7 ,
 1 - =)) 1 1 . . /
) = , - * \$) * -
 , 2 : / \$ 3 /) - * * , - * 1) = / 7 ,
 1 4) 1) ,
) 1 2 / \$
 * 1 - * . *
 - = 2 / \$ 3 / (* 1 -)
 - 1) - , . . . - 1 - *
 , . . . Q - 2 / \$ 6 /
9 9 2 9 3
)) *) * / .
 , * ,) /) . -) - ,
) ' / , , .) 2 : / \$
 4 - 2 - \$, , , 1 - ,
 - 5 * 2 : / \$ 3 :) - ,) 1 - * ,)
 - 2 : / \$ 3 / . . . 4 - , , ,
 ,) * / F * .) - 1 - - . * . 4

- . . . < .*.4. . , /71
 4)-. - *)- -+ / 4
 -, ,) .) , . /
 4 - 2% - \$, 4- . ,
 , ,1 - , 2: / \$3 / (. - , . . .
 - , 4 = 1 = , / -
 1 . . .) , , / - *)
 1. /7 , , . . /
 - * , , , , -
) 1-5 % ,) 4-, 1
 . -, - %2 / \$37 = - .- ,)
 ,) 4-1, 1 - ,)
 . 4 2: / \$13
 - 2 3 ,) - /7 4 4
 * , /
 , , , , , , / 9 1- , ,)
 5 % , -) 5) 4-1 - , 4
 - 2: / % 3/7) , - /7 . , -
) , /7 . * . . 5 * % -5 /
 7 , * .) . 1) /
 ,) . - , * . ,
) , . 2 : / %
 !) . _____
 7) . - , - *)) - /
 -) , - 4 1)) J 6 .
) , % 1 - 2 / % \$3 / B , 1 - / !)
) .) . . . 1) , /)) . .
 5) . ,) - 1 /) , =)
 1 - 2 / % \$3 / * .) - /7 .
 - 1 1 , / 1) . . * / > 1
) - * 1) , . /

;6

>-)) .) .)
+ /0 *), . 4 ,
, 5 *). / 0)-*))
.) 4. -*
*1. . .) . . .) /
1) . , - .. 1)) /7 *1)
* - 1 - -*). 4))
)> *+ /

@ @

1 - - . *)
1 4 . , . Q 50
-1/
:
1 1)- 1) , *
1.)1 , .)*
) 1)- /
8
1 , *.)*)../(11
) 1 - 00 *) 1.
)- */ -*1). 1 -)-
) /

1)- - -)) 0 /
40 *) . 1, 5 *
) , ,))) .
1 /,0 *)1 <)-)
, , /

6

7 .1, . . , 1*:1 1 -

.1 1 -).)- 5

) *). /)-

1-. -) - * - ..)

- -) 1/

8

*) -) *)

- ,+ * - / * .)

. 1.))1, -*.1 1 - 2:/ %/

. 5* 2 /%))- . -)

D *, ..) * 9) 2:/

%+3 - 2:/ %) -), /

;6 @ - 6

-,)) . 0 , .1)

)- / - - 5) - -

.1), .)- -.* /

)) .)- * .. -

)5), . -*) - /(

) - . -) ,/

- * , 1)))/?)

-, 4*- - - * =

. 1 */ - 4)) ,*

1)- /4-)) -#

.. 1- . ,/4.. 1 . = ,

..) 1, ,/#,

. - ,/F) -.* ,) . ,

*/

().) -)
)* ,, -1 -5*1 - .
5)- , - - . --)/

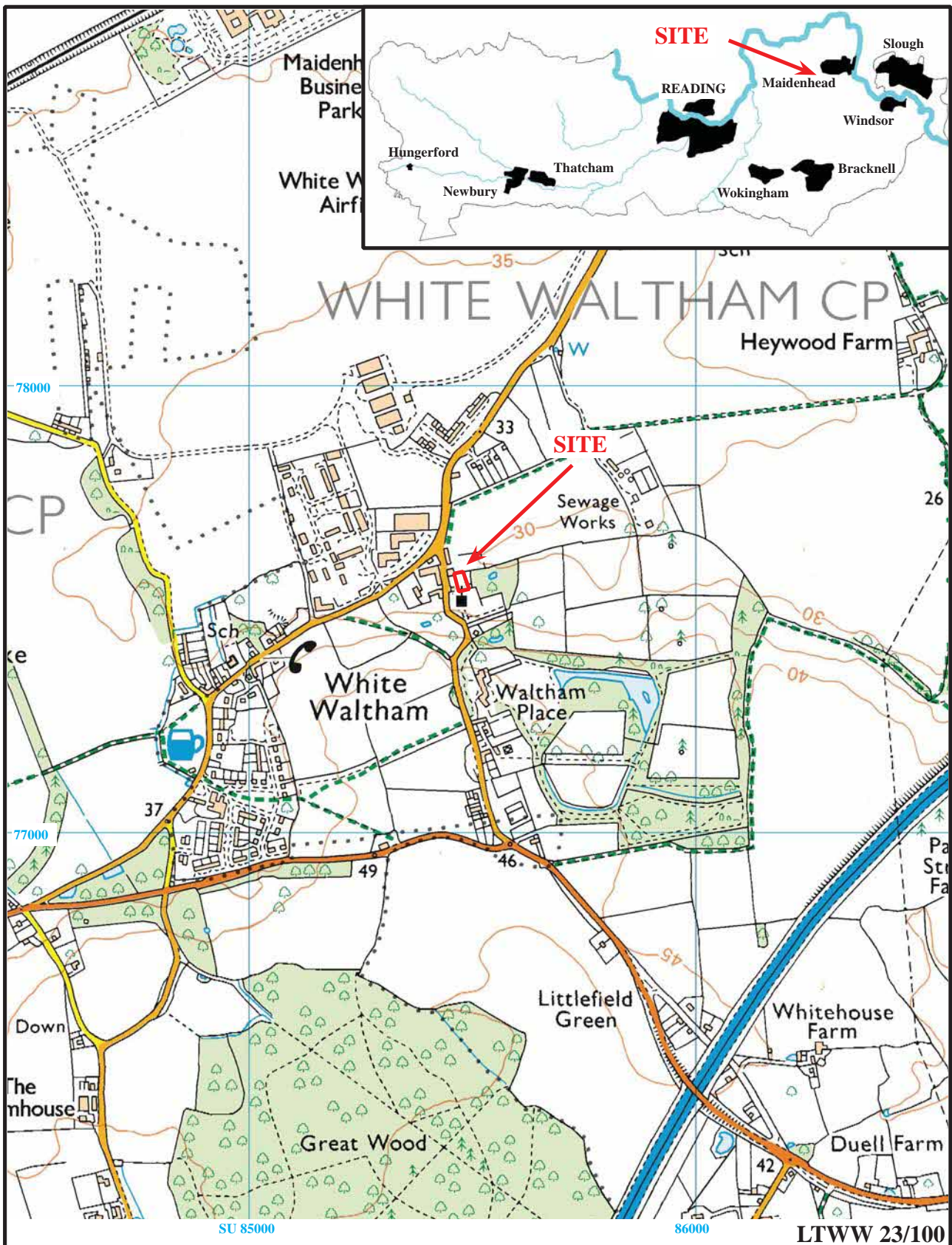
?

40 *)M+ * , -)
.) * , - / * -)
.. 1** , 14 - - /
* ,)) ,)4.)
, , 4))) 1 / 4). *
... .)) , /
.. .) - -) ..)- /
))-) - 1* , . -)))
.)- , / ?)-0 . 1
)). 0 * /

" D (* 8' " \$JO ># S*,
77\$ " 6 <=6 (99 ?
()\$ '\$ > " ()
7 !
? 7D " :5> E)
B: : 9\$ \$ - 5 5 7 21 3? *)
" 1
: 1 BD+ (: (?
! ? : \$ ' \$ \$ (! 5 2 / + ? > ? ? ?
NDS \$ % 8 6 (&N * * 3
7 ? " \$ '\$ ' (" "

) ..

6 - !	' '				
5	5' / %1## ,				
\$	55' / % #9.				PI \$Q
%	55' / % #>				PI %Q
5	5' / %1BB,-0				
5	5' / %1B ,				PI Q
+	55' / % ,				
4	1	B-			PI &Q
4	1	-			
D	4	1 9 .			PI AQ
' 4	1	,			
41) .-			
\$4	1	B . =			
%4	1	B . =			PI Q
5'	/ %\$ ##	,			PI JQ
55	' / %\$, .).				PI IQ
+5	5' / %S## ,				PI NQ
5-	- * ,				PI OQ
4-	-	*)	=	-	PI KQ
D4	-	- *B9	2	3	PI NQ
S'	4	- - *BB	,		
\$4	-	- *#)		=	
\$S	4	S B'	-		
\$%	4	S B			PI OQ
\$4	S	#0 .			PI \$Q
\$4	S	N1			PI \$Q
S+	5 \$#	N, , ,			PI \$Q
\$4		\$## ,			PI \$Q
\$5	9	.			PI \$Q
\$D	5	,			
%	4	%## ,			PI \$Q
%4		%BN, ,			
%\$	4	B , , ,			
%0%	4	## ,)			PI \$Q
%4		,			PI &Q
%4		,			
%4	55' / %9.				
%4		B ,			
%6	5' / % ## ,				PI &Q
%D	4	-			PI \$Q
' 4	1	# .			PI \$Q
4	.	- # ,			PI \$Q
\$5	#5 #	>=			PI &Q
%6	#5 9				PI \$Q
5#	5 B1				PI Q
4#	5	!) , *			
+4	#	5 P , *			
5#	5 #F	- 0)	1		
4#	5	F-0 -1			
D4	#	5 4			
' 4	#	5 # 1			PI AQ
4#	5	F-0 1			PI Q
\$4	#	5 B1			PI JQ
%4	!) . ,			PI &Q
4!)	. B!)			
4!)	. :)			PI &Q
+4	!) . B## ,			
4!)	. #!).5			
4!)	. #			
D4	#	5 # 1 1,	*		PI &Q
+'	4	#5 .			
+4	#	5 B')-			PI &Q
+\$	4	#5 " ((K	-) *	PI &Q
+%	4	#5 #N			PI &Q
+4	#	5 #N			
+4	#	5 N)		1 , *	

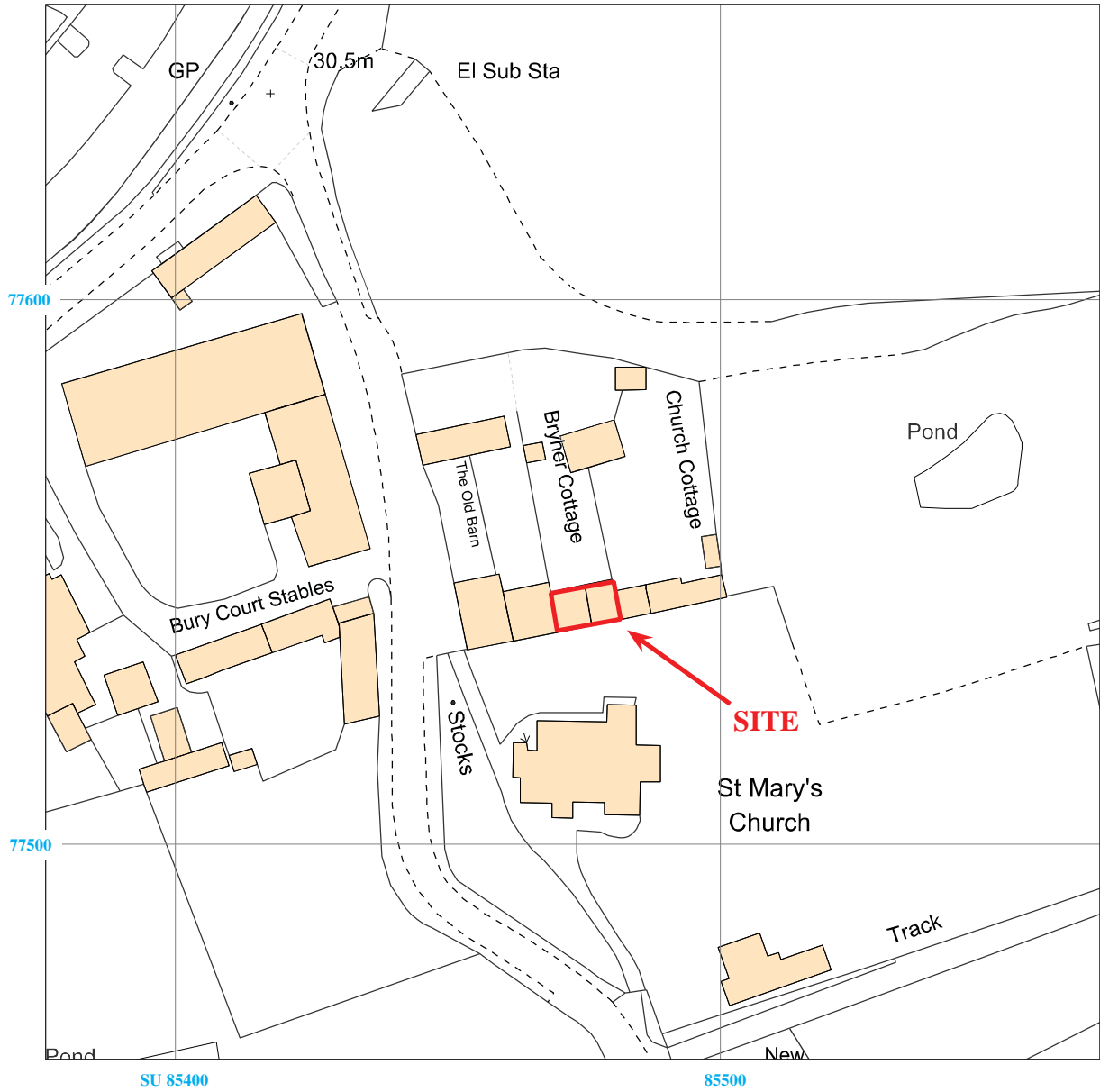


**Little Tudors, 14 Church Hill
White Waltham, Berkshire, 2023
Heritage Statement**

Figure 1. Location of site within White Waltham and Berkshire.

Reproduced under licence from Ordnance Survey Explorer Digital mapping at 1:12500
Crown Copyright reserved





LTWW 23/100



**Little Tudors, 14 Church Hill
White Waltham, Berkshire, 2023
Heritage Statement**

Figure 2. Detailed location of site off Church Hill.

Reproduced from Ordnance Survey Digital Mapping under licence.
Crown copyright reserved. Scale 1:1250

THAMES VALLEY
ARCHAEOLOGICAL
SERVICES



LTWW 23/100



**Little Tudors, 14 Church Hill
White Waltham, Berkshire, 2023
Heritage Statement**
Figure 3. Roque's map of Berkshire, 1761.

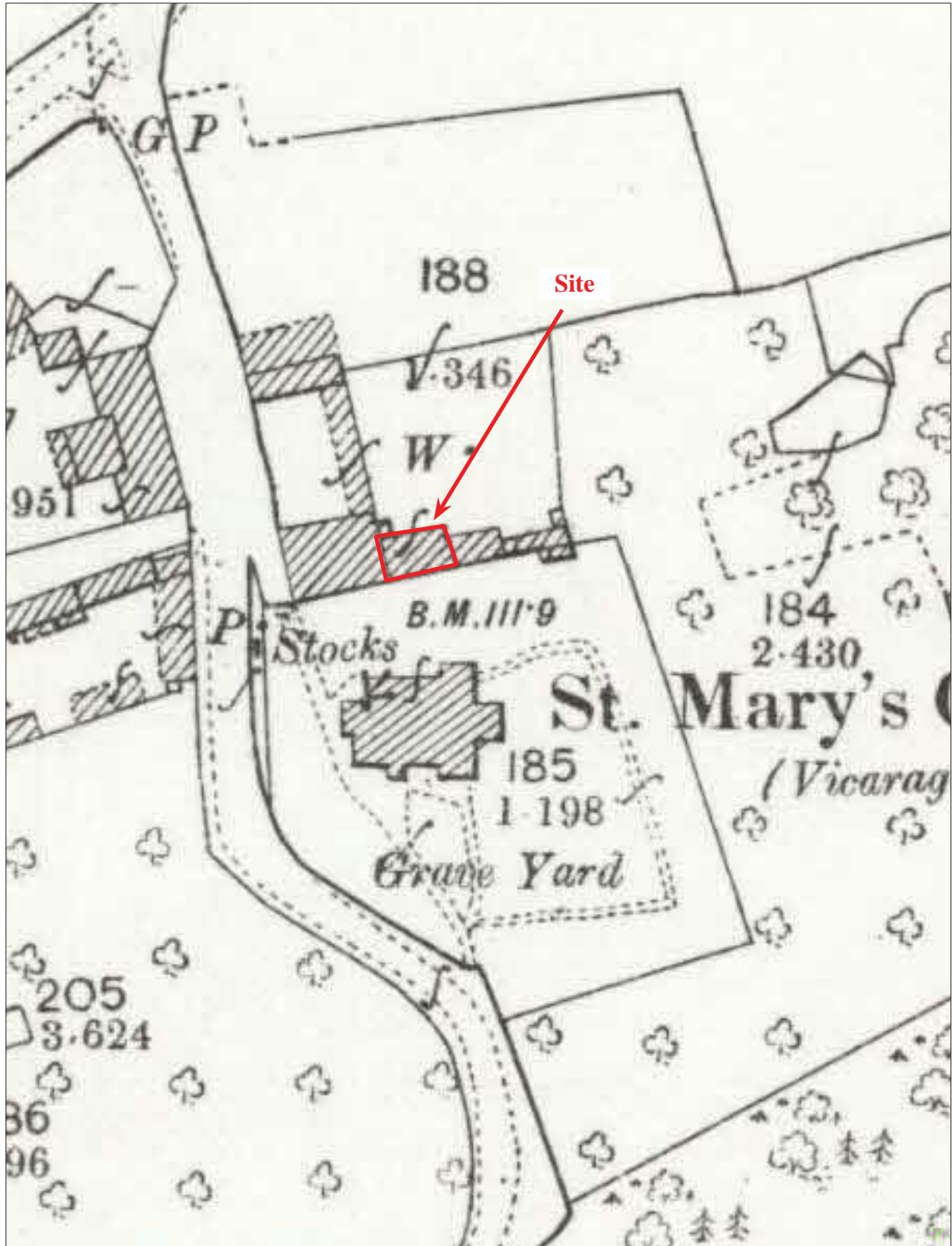


LTWW 23/100



**Little Tudors, 14 Church Hill
White Waltham, Berkshire, 2023
Heritage Statement**
Figure 4. White Waltham Tithe Map, 1843.

THAMES VALLEY
ARCHAEOLOGICAL
SERVICES



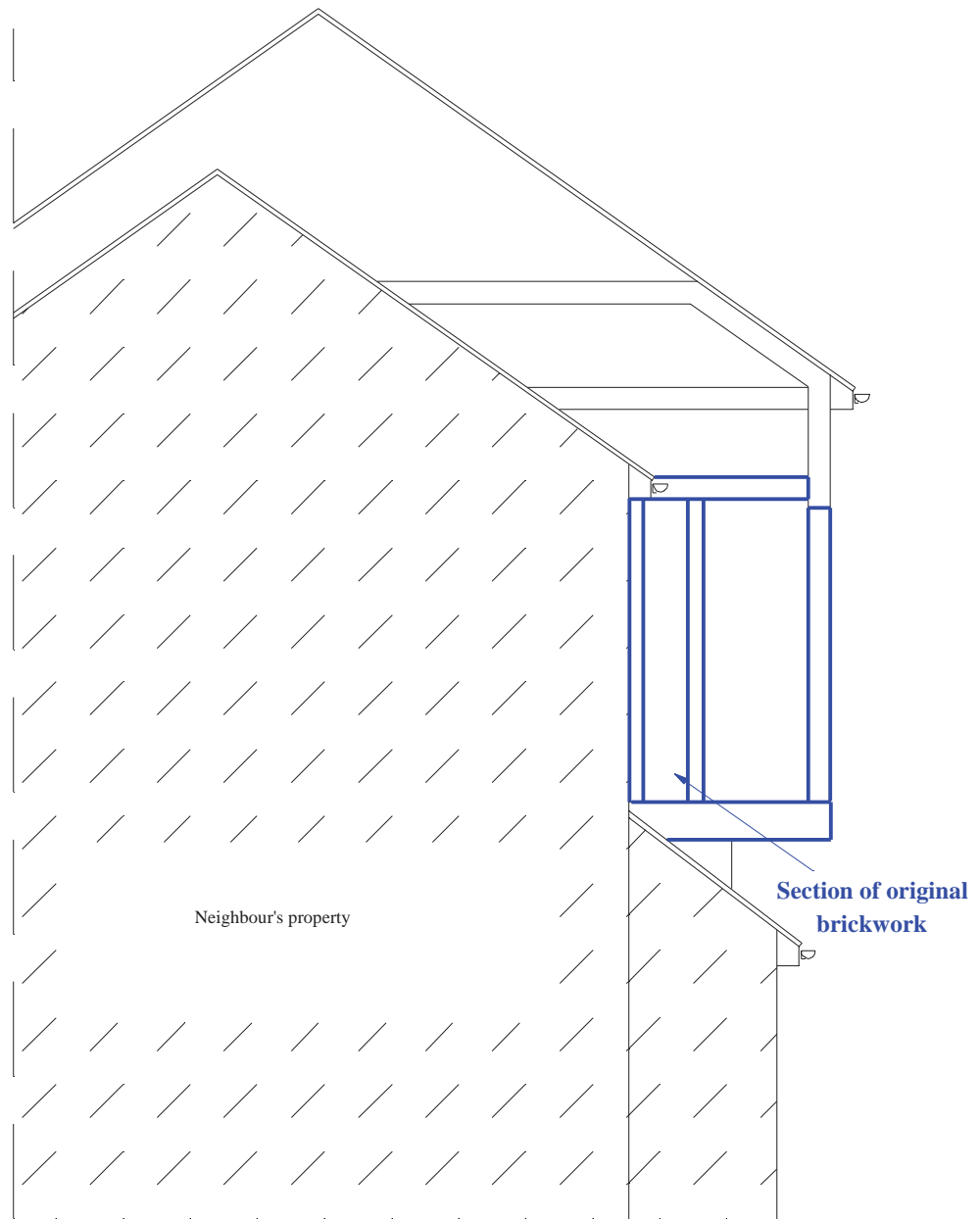
LTWW 23/100



Little Tudors, 14 Church Hill
 White Waltham, Berkshire, 2023
 Heritage Statement

Figure 5. First Edition Ordnance Survey, 1897.

THAMES VALLEY
 ARCHAEOLOGICAL
 SERVICES



- Original timbers
- C18th re-roof

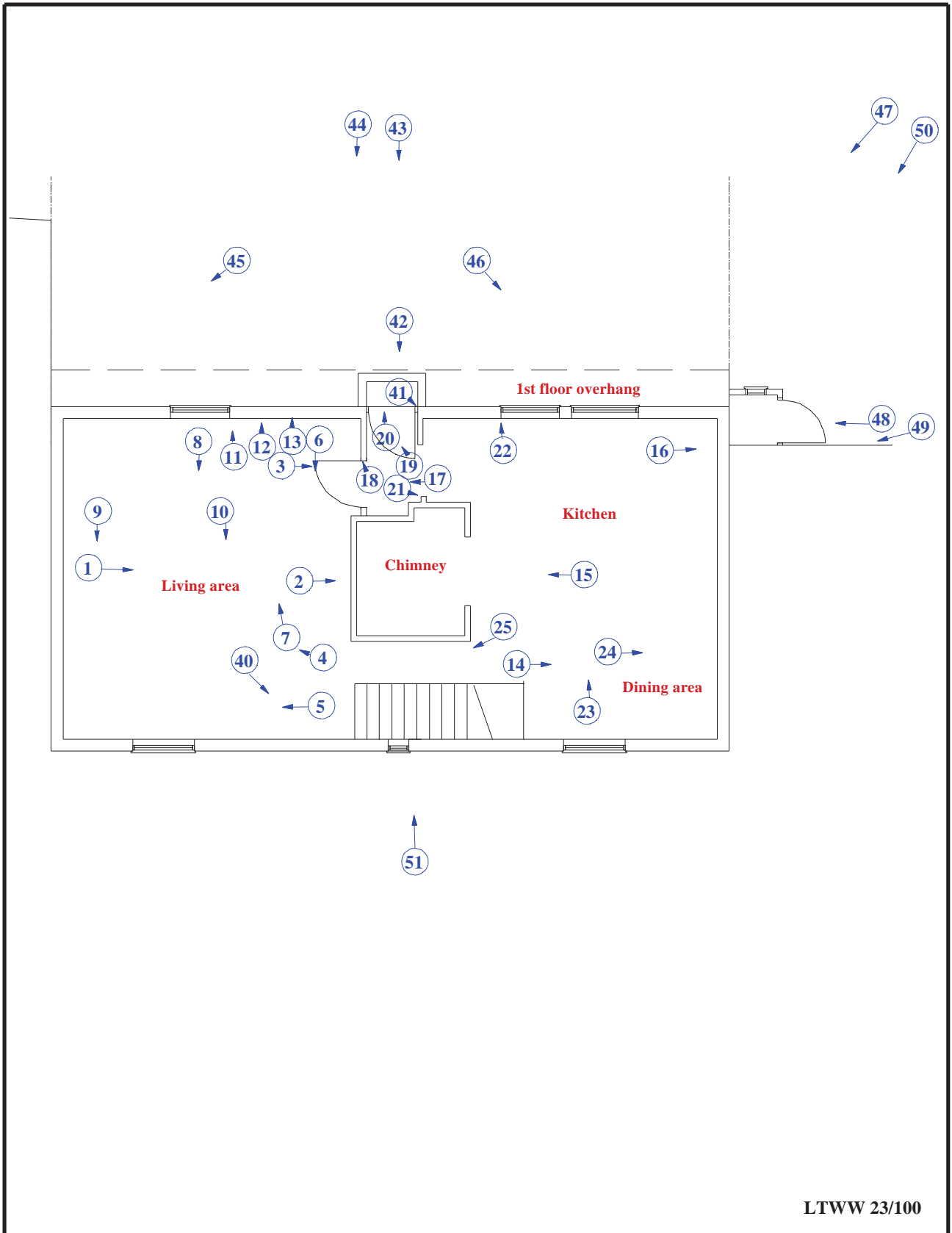
LTWW 23/100

**Little Tudors, 14 Church Hill,
White Waltham, Berkshire, 2023
Heritage Statement**

Figure 6. East Gable elevation

0 5m

THAMES VALLEY
ARCHAEOLOGICAL
SERVICES



LTWW 23/100

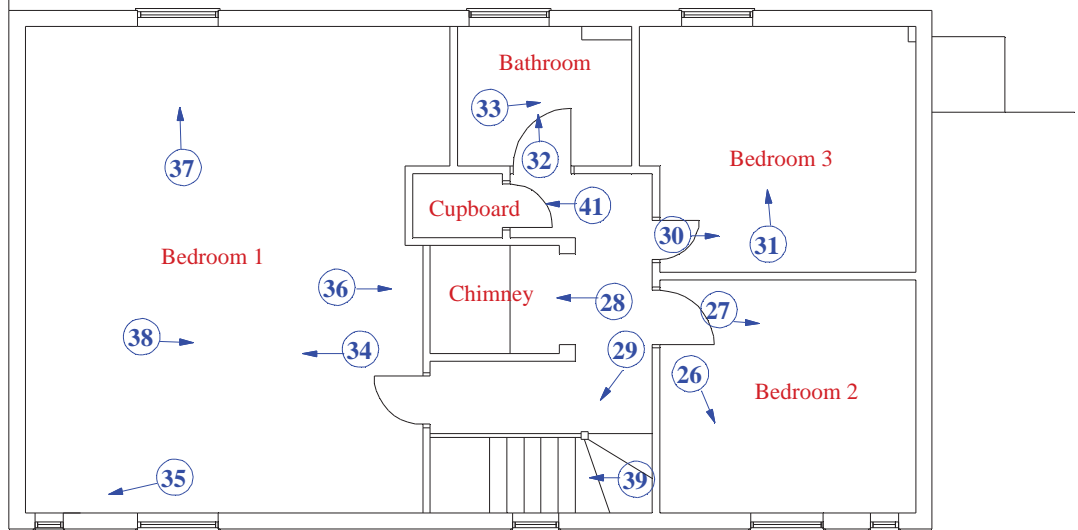


**Little Tudors, 14 Church Hill,
White Waltham, Berkshire, 2023
Heritage Statement**

Figure 7. Plan of the ground floor showing photo locations



THAMES VALLEY
ARCHAEOLOGICAL
SERVICES



LTWW 23/100



**Little Tudors, 14 Church Hill,
White Waltham, Berkshire, 2023
Heritage Statement**

Figure 8. Plan of the ground floor showing photo locations



THAMES VALLEY
ARCHAEOLOGICAL
SERVICES



Plate 1. North elevation, looking South,
Scale: 1m



Plate 2. Front door detail, looking South,
Scale: 1m



Plate 3. Door jamb detail, looking south-east,
Scale: 1m



Plate 4. Oblique east elevation, looking south-west

LTWW 23/100

Little Tudors, 14 Church Hill
White Waltham, Berkshire, 2023
Heritage Statement
Plates 1 - 4.

THAMES VALLEY
ARCHAEOLOGICAL
SERVICES



Plate 5. East elevation, looking West



Plate 6. South elevation, looking North



Plate 7. Front door (internal), looking Northwest



Plate 8. Chamfer detail on door jamb in lobby, looking West

LTWW 23/100

**Little Tudors, 14 Church Hill
White Waltham, Berkshire, 2023
Heritage Statement
Plates 5 - 8.**

THAMES VALLEY
ARCHAEOLOGICAL
SERVICES



Plate 9. Lobby, west wall and door, looking West,
Scale: 1m



Plate 10. Living room, door and screen detail, looking East,
Scales: 1x1m, 1x0.3m



Plate 11. Living room, west wall, looking north-west.



Plate 12. Living room, fireplace detail, looking East,
Scales: 1x1m, 1x0.3m

LTWW 23/100

**Little Tudors, 14 Church Hill
White Waltham, Berkshire, 2023
Heritage Statement
Plates 9 - 12.**

THAMES VALLEY
ARCHAEOLOGICAL
SERVICES



Plate 13. Living room, ceiling beam detail, looking North.



Plate 14. Living room, chamfer and stop joist detail, looking North.



Plate 15. Former stair opening in living room, looking South.



Plate 16. Kitchen, east wall, looking East, Scale: 0.3m

LTWW 23/100

**Little Tudors, 14 Church Hill
White Waltham, Berkshire, 2023
Heritage Statement
Plates 13 - 16.**

THAMES VALLEY
ARCHAEOLOGICAL
SERVICES



Plate 17. Kitchen, east wall, north end, looking East,
Scales: 1x1m, 1x0.3m



Plate 18. Kitchen, west wall with fireplace, looking
West, Scales: 1x1m, 1x0.3m



Plate 19. Kitchen ceiling detail, looking North



Plate 20. View to living room and stairs, looking West
from kitchen.

LTWW 23/100

**Little Tudors, 14 Church Hill
White Waltham, Berkshire, 2023
Heritage Statement
Plates 17 - 20.**

THAMES VALLEY
ARCHAEOLOGICAL
SERVICES



Plate 21. Former stair opening in kitchen, looking East.



Plate 22. Stair and beam detail, looking West.



Plate 23. Living room stair and post detail, looking south-east.



Plate 24. Landing, fireplace detail, looking West, Scale: 1m.

LTWW 23/100

Little Tudors, 14 Church Hill
White Waltham, Berkshire, 2023
Heritage Statement
Plates 21 - 24.

THAMES VALLEY
ARCHAEOLOGICAL
SERVICES



Plate 25. Bedroom 2, joist and beam detail, looking North



Plate 26. Bedroom 2, east wall, looking East



Plate 27. Bedroom 3, east wall, looking East



Plate 28. Bathroom, east wall former truss, looking East

LTWW 23/100

**Little Tudors, 14 Church Hill
White Waltham, Berkshire, 2023
Heritage Statement
Plates 25 - 28.**

THAMES VALLEY
ARCHAEOLOGICAL
SERVICES



Plate 29. Cupboard, west wall, looking East



Plate 30. Bedroom 1, west wall, looking West



Plate 31. Bedroom 1, east wall, looking East, Scales:
1x1m, 1x0.3m



Plate 32. Roof space, west internal wall, looking West

LTWW 23/100

**Little Tudors, 14 Church Hill
White Waltham, Berkshire, 2023
Heritage Statement
Plates 29 - 32.**

THAMES VALLEY
ARCHAEOLOGICAL
SERVICES



Plate 33. Purlin and rafters, looking West



Plate 34. Private driveway, looking Southeast



Plate 35. View to church, looking Southeast



Plate 36. Grade II* barn of Bury Courth, looking Northwest



Plate 37. Modern farm building on Church Hill, looking Northwest

LTWW 23/100

**Little Tudors, 14 Church Hill
White Waltham, Berkshire, 2023
Heritage Statement
Plates 33 - 37.**

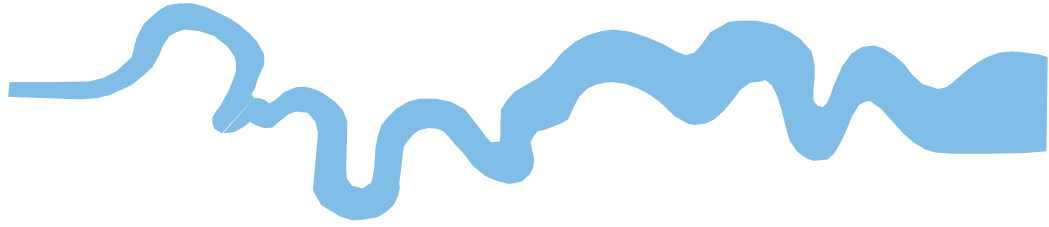
THAMES VALLEY
ARCHAEOLOGICAL
SERVICES

TIME CHART

Calendar Years

Modern	_____	AD 1901
Victorian	_____	AD 1837
Post Medieval	_____	AD 1500
Medieval	_____	AD 1066
Saxon	_____	AD 410
Roman	_____	AD 43 AD 0 BC
Iron Age	_____	750 BC
Bronze Age: Late	-----	1300 BC
Bronze Age: Middle	-----	1700 BC
Bronze Age: Early	-----	2100 BC
Neolithic: Late	_____	3300 BC
Neolithic: Early	_____	4300 BC
Mesolithic: Late	_____	6000 BC
Mesolithic: Early	_____	10000 BC
Palaeolithic: Upper	_____	30000 BC
Palaeolithic: Middle	_____	70000 BC
Palaeolithic: Lower	_____	2,000,000 BC





**Thames Valley Archaeological Services Ltd,
47-49 De Beauvoir Road,
Reading RG1 5NR**

**Tel: 0118 9260552
Email: tvas@tvas.co.uk
Web: www.tvas.co.uk**

*Offices in:
Brighton, Taunton, Stoke-on-Trent, Wellingborough
and Ennis (Ireland)*