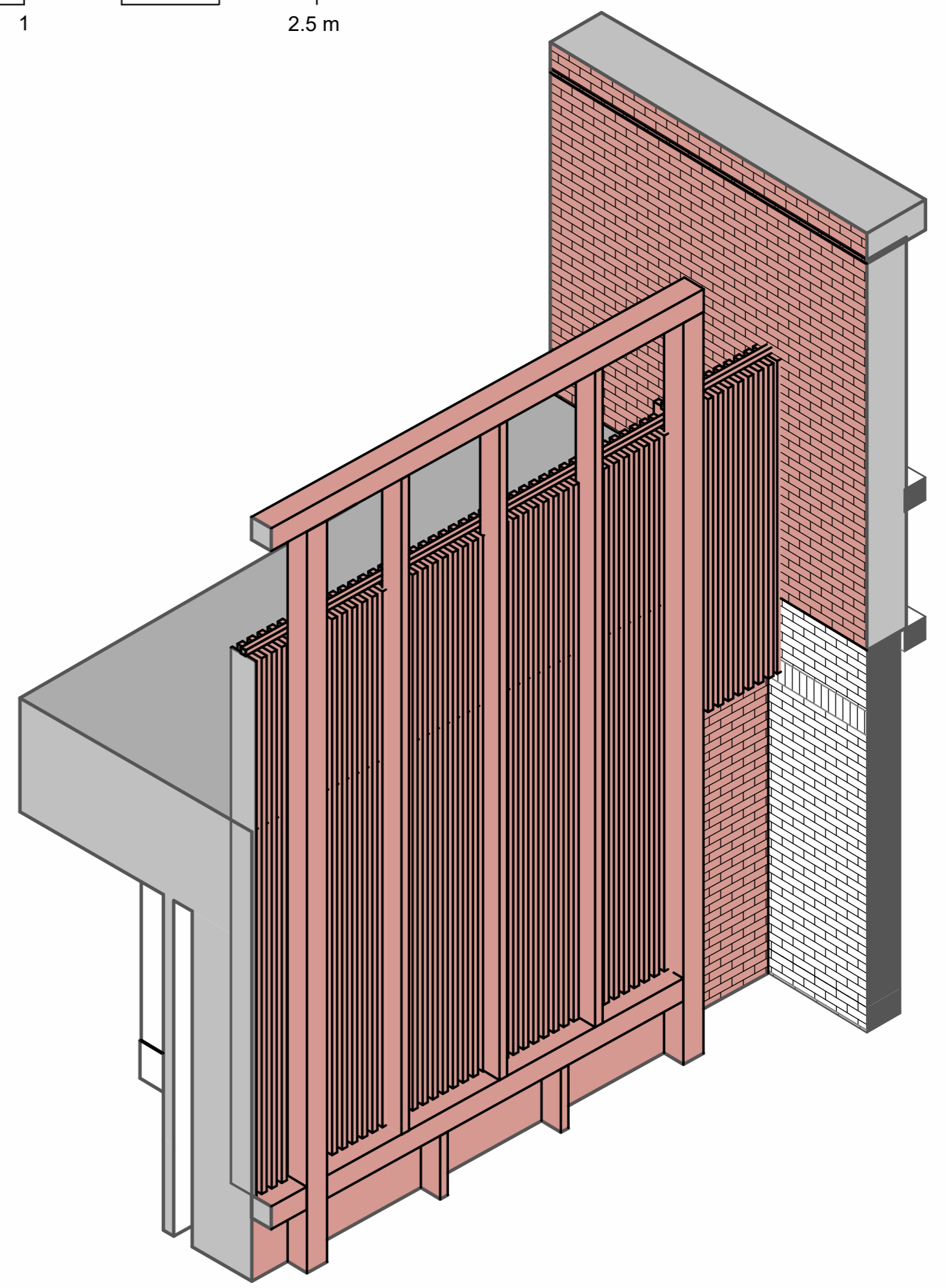
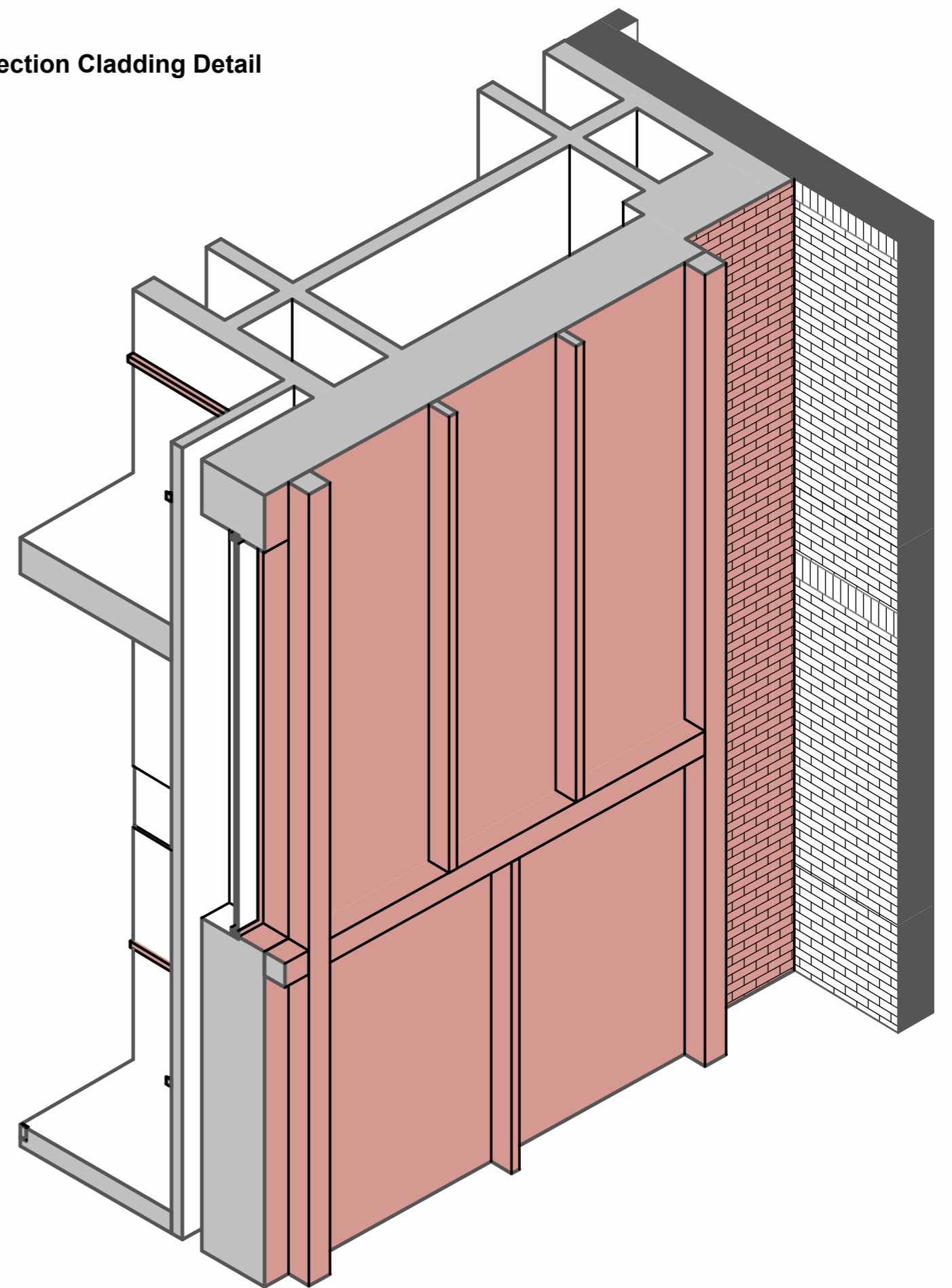


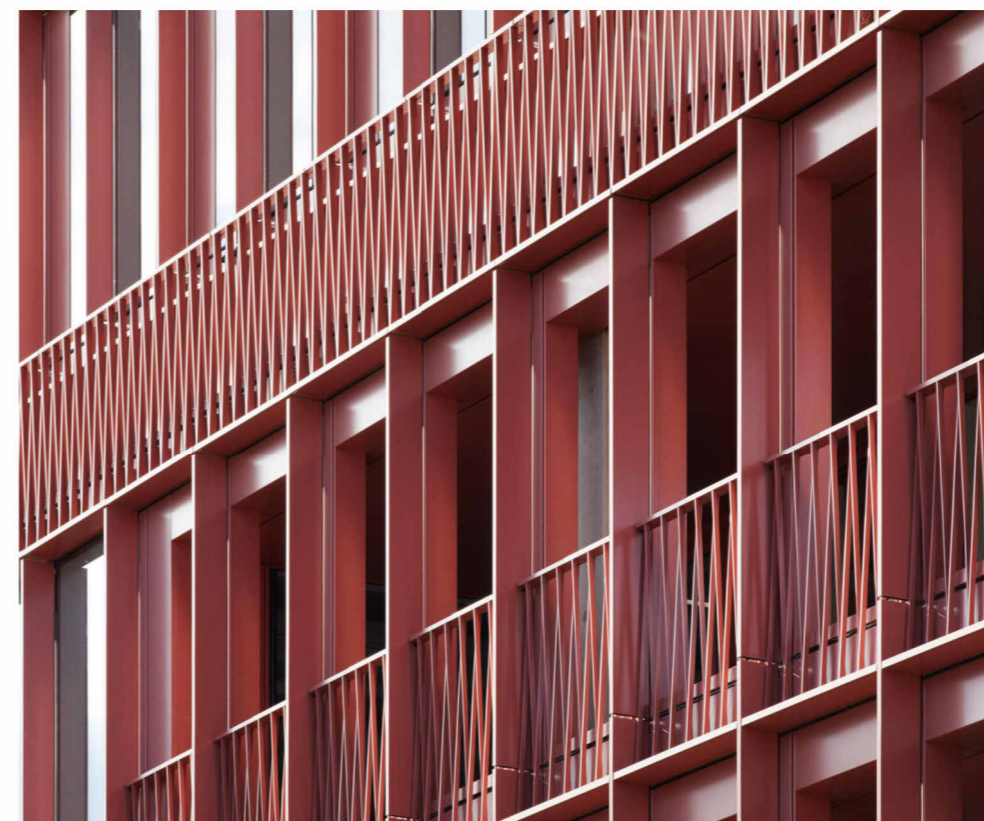
SCALE 1:25
0 0.5 1 2.5 m



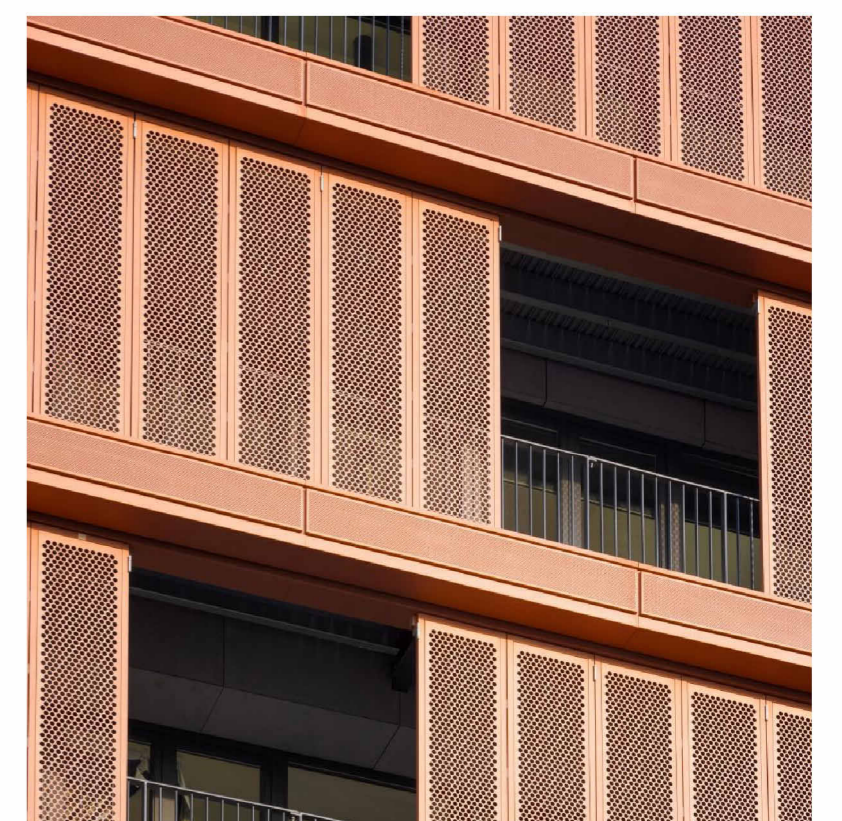
Axo Projection Cladding Detail
NTS



Axo Projection Cladding Detail
NTS



Kings Cross - Metal Fins (REFERENCE)



New Waverley - Perforated Cladding (REFERENCE)

EL_Courtyard_West-Detail
1 : 25

REV.	REVISION NOTE	DATE	BY
A	PLANNING ISSUE	14/12/23	JK

External Materials & Details

Notes
1 Existing brick - texture and tonally varied
2 Existing stone - red sandstone
3 Proposed replaced windows - alu-clad timber windows RAL 3012 with matching mastic sealant
4 Aluminium rainscreen cladding system RAL 3012
5 Slate roof - made good or re-slated
6 Existing balustrade - retained, stripped, primed and repainted RAL 3012
7 New rain water goods - metal rain water goods RAL 10c
8 Existing rain water goods made good and repainted RAL 10c
9 PPC metal louvers, RAL 3012

External Materials & Details

Notes
10 PPC metal signage, RAL 3012
11 Entrance door - RAL 3012
12 Existing door - kept in place, sealed and repainted same colour
13 Proposed brick - textured and tonally varied, pink/red multi-stock facing brick with colour matched mortar
14 Existing perforated metal window protection - cleaned, sealed and painted RAL 3012
15 Curtain walling - RAL 3012
16 Aluminium rainscreen cladding system, perforated, RAL 3012
17 Replaced rooflights RAL matching the roof slate
18 Coit louvers for ventilation shaft, colour to match roof slate.

PLANNING

NOTES -
DO NOT SCALE FROM DRAWING
ALL DIMENSIONS TO BE CHECKED ON SITE PRIOR TO THE START OF ANY WORK AND ANY DISCREPANCIES NOTIFIED IN WRITING.
REFER TO ENGINEERS' DRAWINGS FOR ALL STRUCTURAL, HEATING, LIGHTING, POWER, EXTERNAL AND UNDERGROUND DRAINAGE AND VENTILATION INFORMATION
ALL BUILDING WORKS TO COMPLY IN ALL RESPECTS TO CURRENT BUILDING STANDARDS FOR COUNTRY IN WHICH SITE IS LOCATED.

DATE	BY	SCALE	
AUG 2023	JK	1 : 25 @ A1	
JOB NO.	CHKD.	DRWG NO.	REV.
20240	MM	EL_106	A

COLLECTIVE ARCHITECTURE
MERCAT BUILDING, 26 GALLOWGATE, GLASGOW, G1 5AB
TELEPHONE +44(0)141 552 3001 FAX +44(0)141 552 3888
24 AINSLIE PLACE, EDINBURGH, EH3 6AJ
TELEPHONE +44 (0)131 516 2270
EMAIL INFO@COLLECTIVEARCHITECTURE.CO.UK
WWW.COLLECTIVEARCHITECTURE.CO.UK