

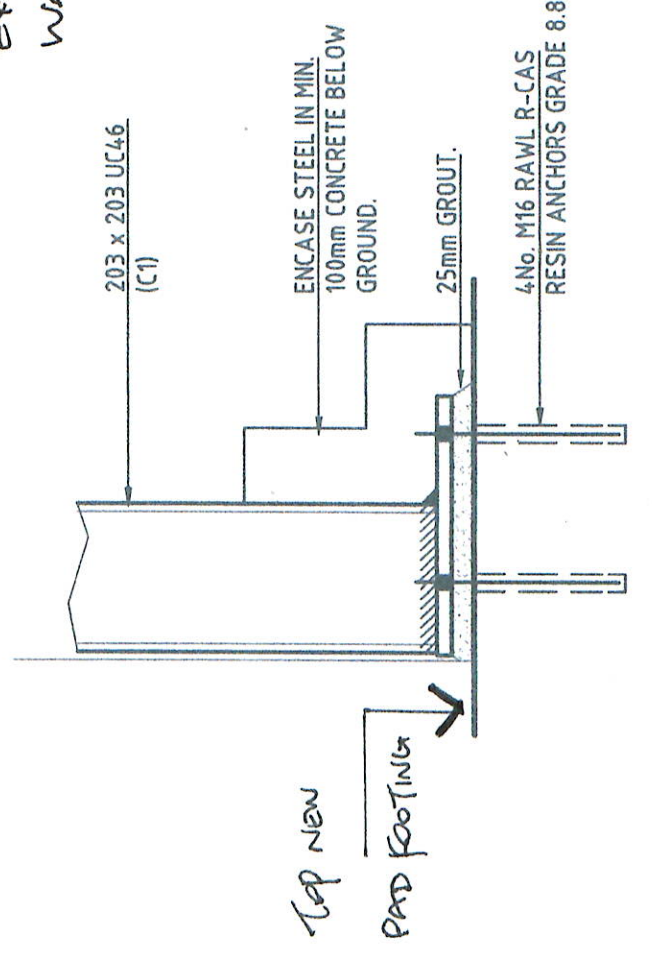
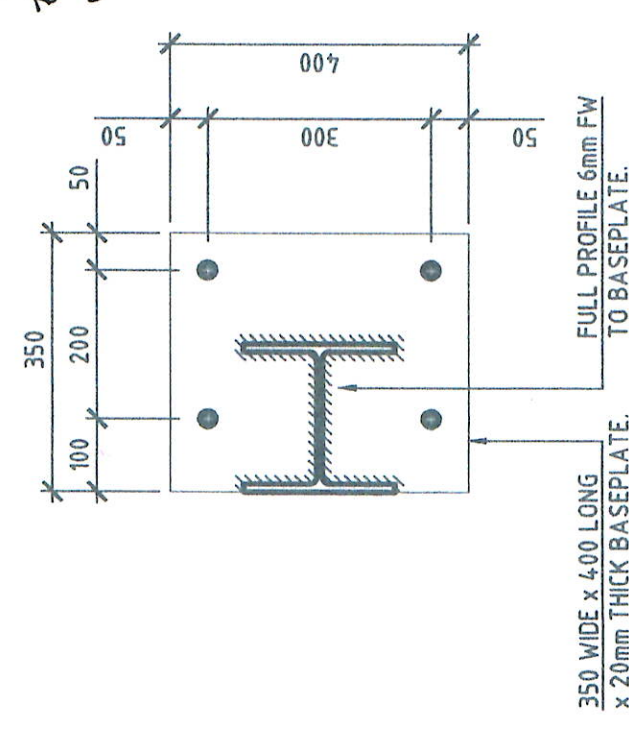
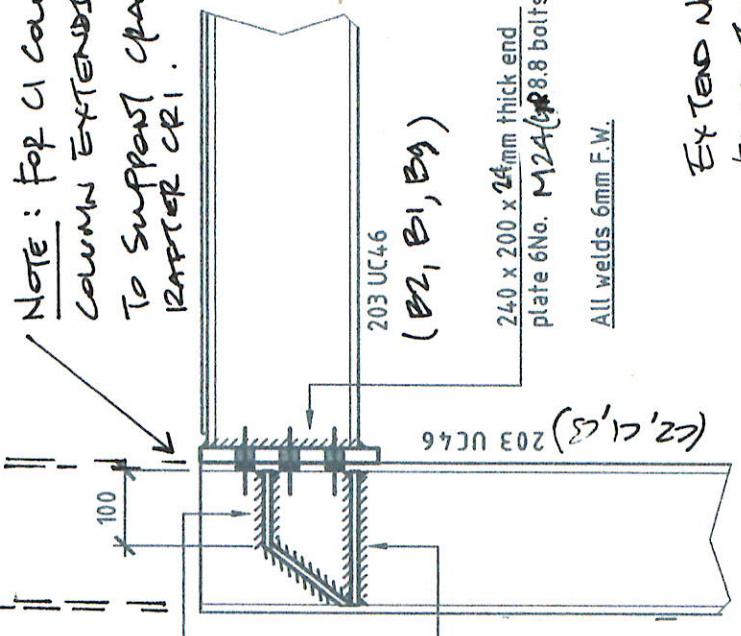
DO NOT SCALE

NOTE: For C1 column only  
column extends higher  
to support cranked  
rafter CR1.

ADOPT 2 x 95 x 8 MORRIS  
STIFFENERS BETWEEN TOP  
TWO ROWS OF BOLTS AND  
THE COMPRESSION  
STIFFENERS. HORIZ LENGTH  
OF STIFFENER TO BE 100mm.

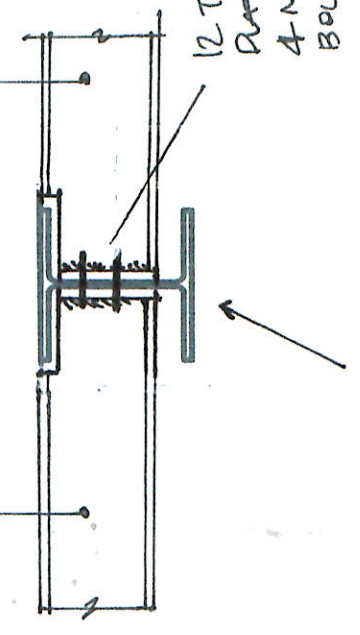
ADOPT 2 x 95 x 8 PLATE  
STIFFENERS ADJACENT TO  
THE HAUNCH COMPRESSION  
FLANGE BY 4 x 6mm FW

(NOTE: B5, B6  
(OMITTED FOR  
CLARITY

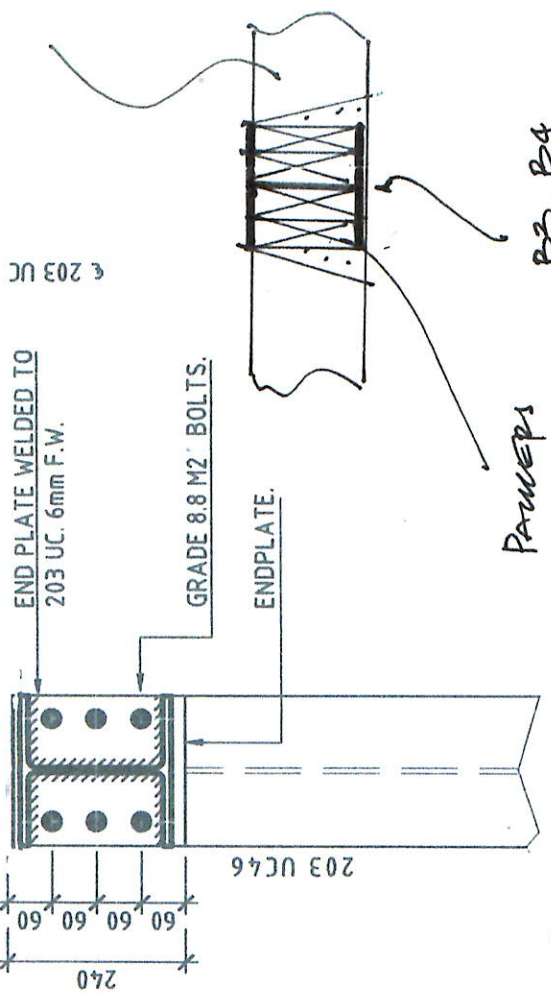


FIRST FLOOR JOISTS.

B3-152 UC23 (1st Floor Zone)  
B4-152 UC23 (1st Floor Zone)

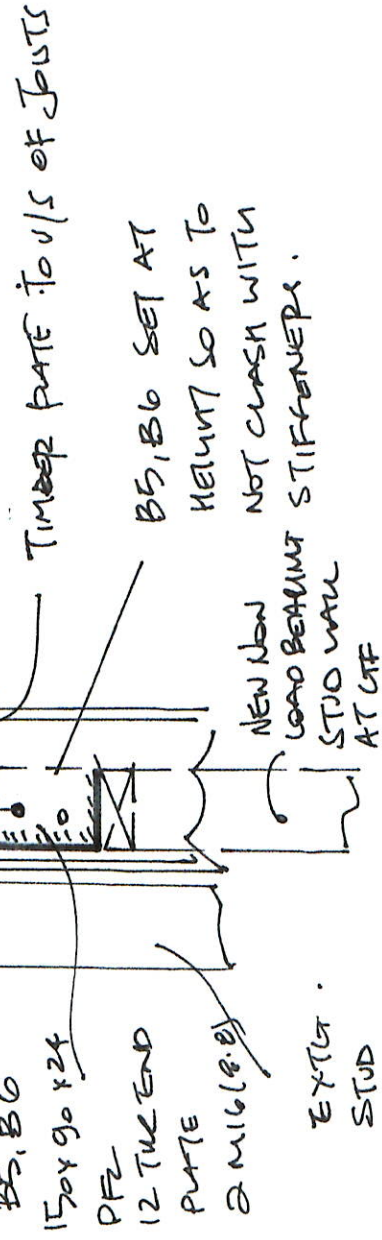


B2-203 UC46 Skewer  
NOTE - SIMULTANEOUS CONNECTION  
FOR B3/B1 & B4/B0



PAWERS + HANWEN.  
B3, B4  
152 UC23.

FIRST FLOOR JOIST.



STRUCTURAL STEELWORK NOTES - SWAY FRAME

1. ALL MATERIALS, FABRICATION AND ERECTION OF STEELWORK SHALL BE IN ACCORDANCE WITH THE 4TH EDITION OF THE NATIONAL STRUCTURAL STEELWORK SPECIFICATION FOR BUILDING CONSTRUCTION AS PUBLISHED BY THE BRITISH CONSTRUCTIONAL STEELWORK ASSOCIATION IN ASSOCIATION WITH THE STEEL CONSTRUCTION INSTITUTE.
2. STEEL COLUMNS SHALL BE RAISED/LOWERED TO THE CORRECT LEVELS OFF FOUNDATIONS. CONCRETE PADSTONES USING SAWN STEEL PACKS NOT LESS THAN 75MM SQUARE. ALLOWANCE SHOULD BE MADE FOR NOMINAL 2MM THICKNESS OF GROUT BETWEEN COLUMN BASEPLATES AND TOP OF FOUNDATIONS/PADSTONES. GROUTING SHALL BE CARRIED OUT USING A PROPRIETARY NON-SHRINK CEMENTITIOUS GROUT SUPPLIED BY A BSI REGISTERED FIRM IN ACCORDANCE WITH THE MANUFACTURERS INSTRUCTIONS.
3. SITE MODIFICATIONS TO STRUCTURAL STEELWORK SHALL NOT BE PERMITTED UNLESS PRIOR WRITTEN APPROVAL HAS BEEN OBTAINED FROM THE ENGINEER.
4. ALL STRUCTURAL STEELWORK SHALL BE BLAST CLEANED TO BS 7077 PART A1, PREPARATION GRADE SA 21/2 AND, EXCEPT WHERE SPECIFIED AS GALVANISED, SHALL BE SHOP PAINTED WITH A SUITABLE GOOD QUALITY HIGH BUILD EPOXY ZINC PHOSPHATE PRIMER TO PROVIDE A DRY FILM THICKNESS NOT LESS THAN 75 MICRONS. THE CONTRACTOR SHALL ENSURE THAT THE PRIMER USED IS COMPATIBLE WITH SUBSEQUENT COATINGS SUCH AS INTUMESCENT PAINT AS SPECIFIED BY OTHERS.
5. STEELWORK SPECIFIED ON THE DRAWINGS AS GALVANISED SHALL BE BLAST CLEANED AS ABOVE AND HOT DIP GALVANISED TO BS 729 WITH A MINIMUM COATING THICKNESS OF 85 MICRONS.
6. ALL STEELWORK BELOW DPC LEVEL OR BUILT WITHIN THE CAVITY OF AN EXTERNAL CAVITY MASONRY WALL SHALL RECEIVE AN ADDITIONAL 125 MICRONS OF SHOP OR SITE APPLIED GOOD QUALITY HIGH BUILD EPOXY ZINC PHOSPHATE PRIMER TO ACHIEVE AN OVERALL DRY FILM THICKNESS OF NOT LESS THAN 200 MICRONS. IN ADDITION, STEELWORK BELOW DPC SHALL BE ENCASED IN NOT LESS THAN 100MM OF CONCRETE AS SPECIFIED ON THE DRAWINGS.
7. THE ENGINEER IS NOT RESPONSIBLE FOR DIMENSIONAL INFORMATION OTHER THAN THAT INDICATED ON HIS DRAWINGS. ALL SETTING OUT INFORMATION SUCH AS DIMENSIONS, LEVELS, OFFSETS FROM GRID ETC. ARE TO BE DERIVED FROM THE ARCHITECTS DRAWINGS.
8. FIRE PROTECTION OF STEELWORK TO DETAIL BY ARCHITECT.

| Revision | Description | Date | Drawn |
|----------|-------------|------|-------|
|          |             |      |       |
|          |             |      |       |

|          |                   |             |          |
|----------|-------------------|-------------|----------|
| Project: | Pinocemos         | Drawing No. | 11268-03 |
| Client:  | MILANE, BARNFIELD | Date:       | June 23  |
|          |                   | Scale:      | 1:10     |
|          |                   | Drawn:      | TKZ      |
|          |                   | Checked:    |          |

**BRETT DESIGN**  
Consulting Engineers

4 Maiden Way, Hadleigh, Suffolk IP7 5EH  
01473 822047 / 822227  
e: info@brettdesignpartnership.co.uk  
www.brettdesignpartnership.co.uk

**PARTNERSHIP**