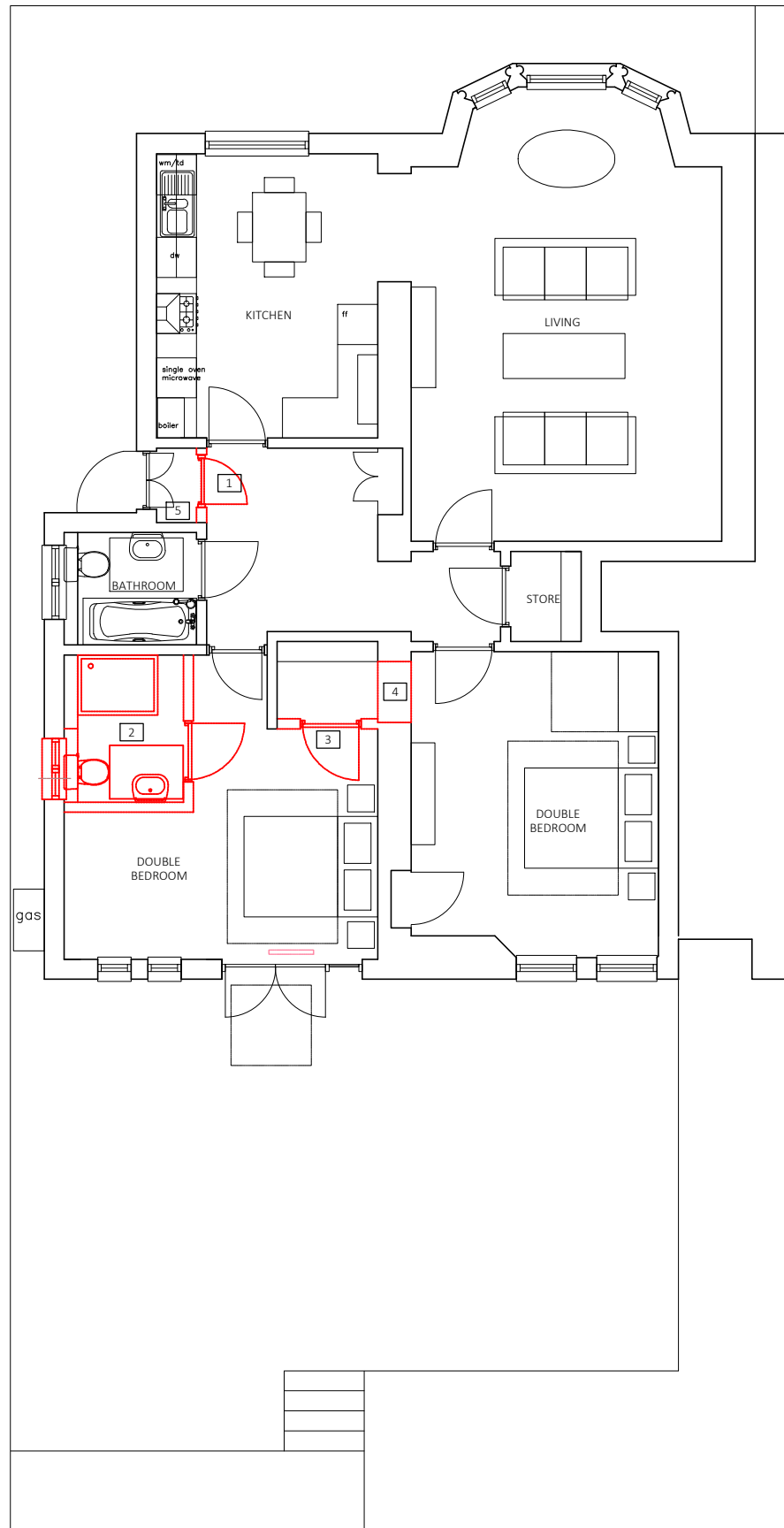


⊕ EXISTING GROUND FLOOR PLAN - 1:100

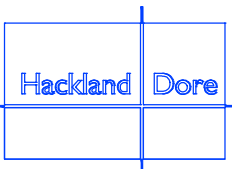


⊕ DOWNTAKINGS GROUND FLOOR PLAN - 1:100

DESIGN PROPOSALS KEY

1. SECONDARY LOBBY DOOR REMOVED
2. EN-SUITE REMOVED AND RELOCATED IN PROPOSED LAYOUT
3. STORE ENLARGED TO ACCOMMODATE NEW EN-SUITE LOCATION
4. OPENING CREATED TO ACCESS NEW PROPOSED EN-SUITE.
5. ELECTRIC METER TO BE RELOCATED

DOWNTAKINGS



Hackland and Dore Architects
16 Annandale Street
Edinburgh EH7 4AN
t 0131 538 7707
e admin@hackland-dore.com
w www.hackland-dore.com

DO NOT SCALE. IF IN DOUBT, ASK

Electronic and printed copies of drawings are liable to distortion and inaccuracies. All dimensions in millimetres unless otherwise stated. This drawing to be read in conjunction with all relevant architectural, civil, structural and services engineer's drawings and specifications.

© This drawing is copyright and the property of Hackland + Dore Architects. It must not be reproduced or disclosed to a third party without written consent.

House Extension 13 Chamberlain Road	EXISTING AND DOWNTAKINGS PLAN	Date 17.10.2023	Scale 1:100	Drawn By JH	Chkd By MM
Ron Law	PLANNING	HD1104 (PL)015			