

THIS DRAWING IS COPYRIGHT © Western Design Ltd 2022

REPRODUCING THESE DRAWINGS BY PRINTING OR COPYING MAY LEAD TO ERRORS, PLEASE REFER TO SCALE BAR. DO NOT SCALE OFF THESE DRAWINGS FOR CONSTRUCTION PURPOSES. IF ANY DISCREPANCIES ARE FOUND, PLEASE CONTACT WESTERN DESIGN ARCHITECTS IMMEDIATELY.

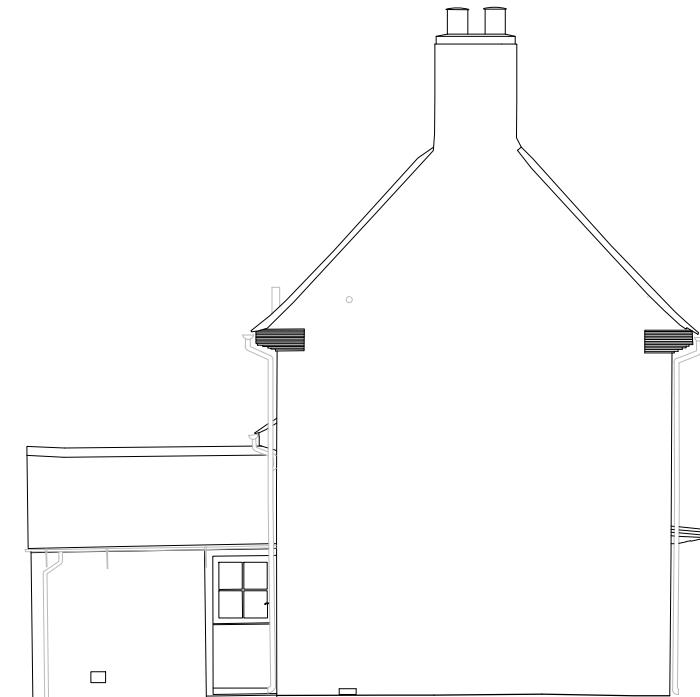
DESIGNERS RISK ASSESSMENT- HEALTH AND SAFETY THE CONSTRUCTION (DESIGN AND MANAGEMENT) REGULATIONS 2015

A design and risk assessment Drawing CDM01 should form part of our drawing package, if you have not received this from us by post, email or by collection please contact us for a copy before moving forward with the project.

- NOTES PLANNING**
1. Planning drawings are only to be used for planning purposes & no reliance on compliance with Building regulations should be assumed.
 2. With regard to Fire Safety Design all layout details and indicated construction materials are subject confirmation by a specialist fire consultant prior to construction. Material choices are for planning/aesthetic purposes only with fire performance details subject to confirmation by a Specialist Fire Consultant (fixing system behind cladding should also be non combustible A1 or A2 rated and agreed with fire consultant)



Proposed South-West Elevation



Proposed North-West Elevation



Proposed North-East Elevation



Proposed South-East Elevation

--	--	--	--

REV.	DETAILS	BY	CKD	DATE
------	---------	----	-----	------

WDA
westerndesignarchitects.com

Western Design Architects
12 The Granary, Hinton Business Park, Tarrant Hinton, Dorset, DT11 8JF
T:01258 830675 E:info@westerndesign.co.uk

CLIENT
Charles & Amanda Yaxley

PROJECT
Rose Cottage, 1, Damerham

DRAWING TITLE
Existing Main House Elevations

DATE 08.11.2023	DRAWN BY MT	CHECKED BY MW
--------------------	----------------	------------------

SCALE 1:100@A3	JOB NO. 2223068
-------------------	--------------------

DRAWING NO. 09	REVISION -
--------------------------	---------------

PLANNING