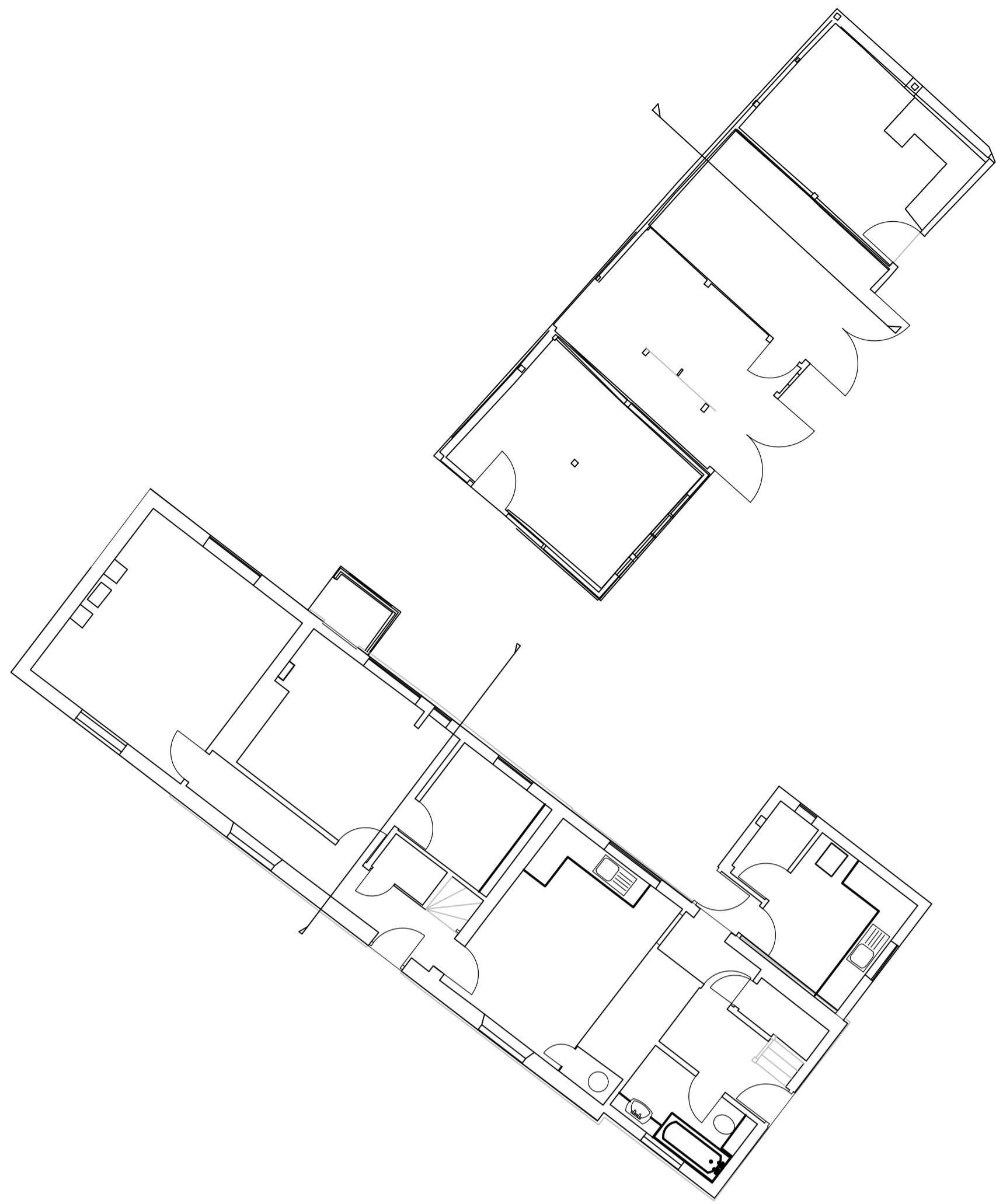
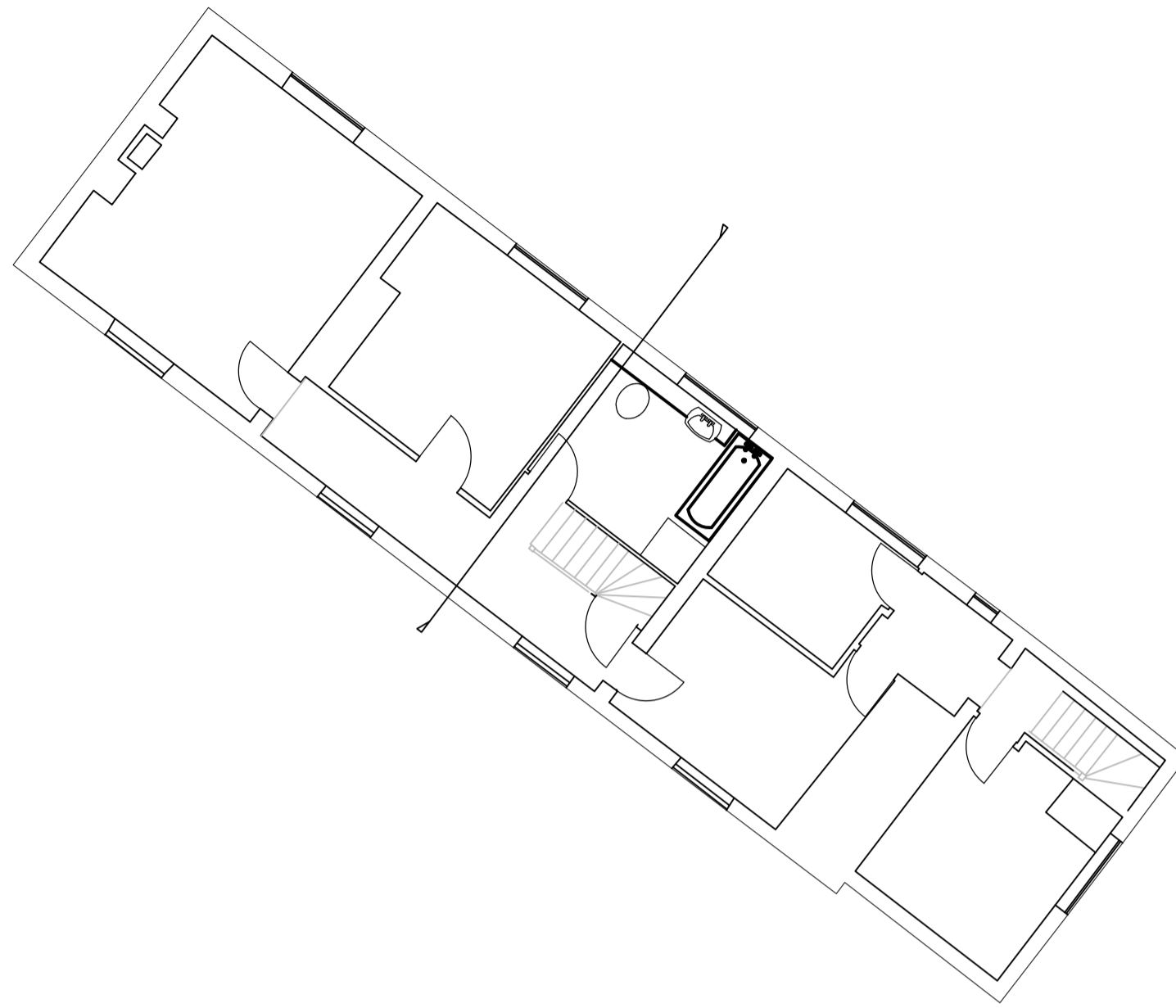


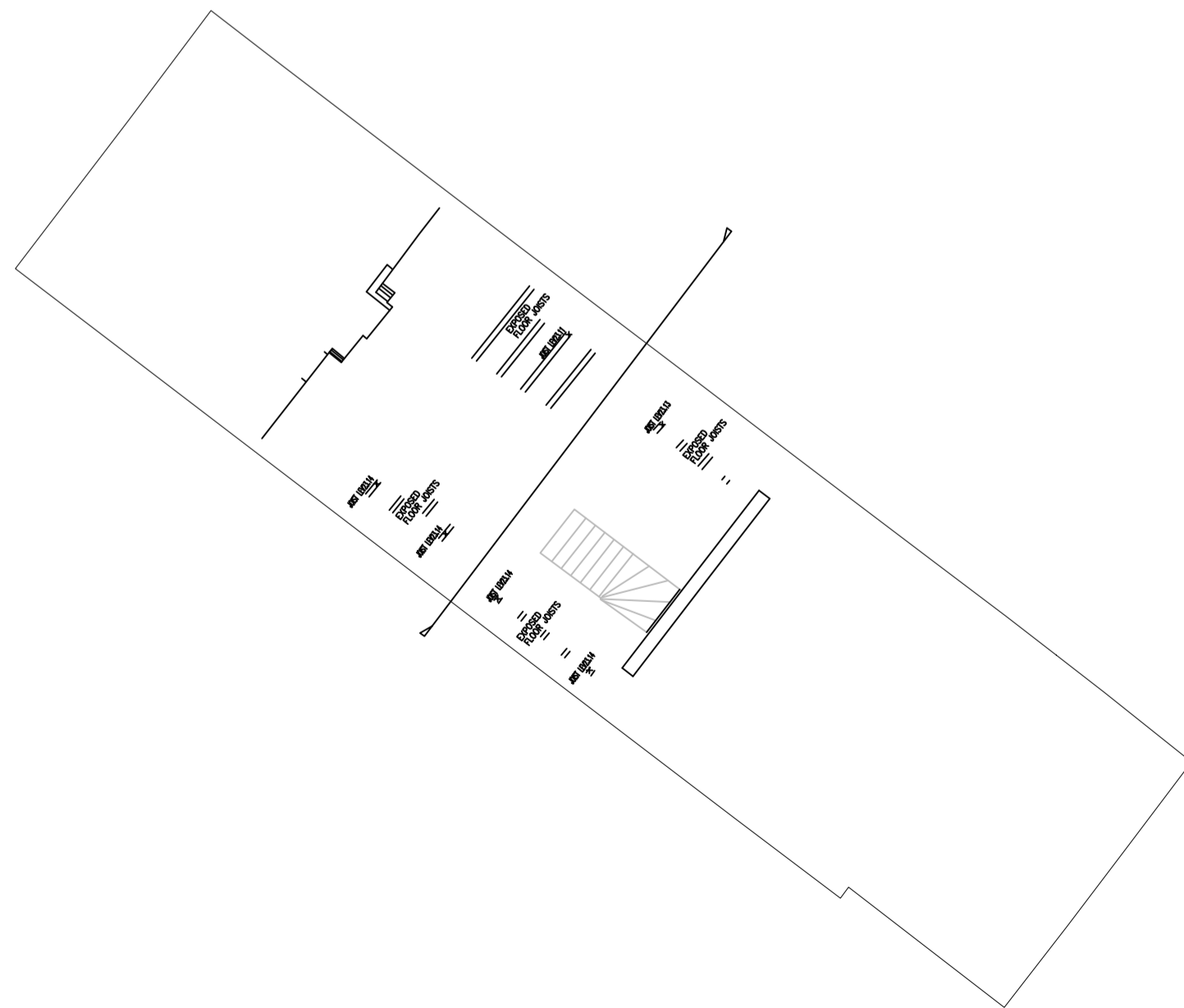
REPRODUCING THESE DRAWINGS BY PRINTING OR COPYING MAY LEAD TO ERRORS. PLEASE REFER TO SCALE BAR. DO NOT SCALE OFF THESE DRAWINGS FOR CONSTRUCTION PURPOSES. IF ANY DISCREPANCIES ARE FOUND, PLEASE CONTACT WESTERN DESIGN ARCHITECTS IMMEDIATELY.



Existing Ground Floor Plan



Existing First Floor Plan



Existing Attic Plan

DESIGNERS RISK ASSESSMENT- HEALTH AND SAFETY  
THE CONSTRUCTION (DESIGN AND MANAGEMENT) REGULATIONS 2015  
For significant hazards specific to the project please refer to Drawing CDM01 where appropriate

- NOTES:-
- NOTES PLANNING**
1. Planning drawings are only to be used for planning purposes & no reliance on compliance with Building regulations should be assumed.
  2. With regard to Fire Safety Design all layout details and indicated construction materials are subject confirmation by a specialist fire consultant prior to construction. Material choices are for planning/aesthetic purposes only with fire performance details subject to confirmation by a Specialist Fire Consultant (fire system behind cladding should also be non combustible A1 or A2 rated and agreed with fire consultant)



--	--	--	--

REV.	REVISION DETAILS	BY	CKD	DATE
------	------------------	----	-----	------

**WDA**  
westerndesignarchitects.com

**Western Design Architects**  
12 The Granary, Hinton Business Park, Tanter Hinton, Dorset, DT11 5JF  
T: 01258 830675 E: info@westerndesign.co.uk

CLIENT  
Charles & Amanda Yaxley

PROJECT  
Rose Cottage, 1, Damerham

DRAWING TITLE  
Existing Floor Plans

DRAWN BY MT	CHECKED BY MW	DATE 08.11.2023
----------------	------------------	--------------------

SCALE 1:100@A1	JOB NO. 2223068
-------------------	--------------------

DRAWING NO. <b>04</b>	REVISION -
--------------------------	---------------

**PLANNING**

THIS DRAWING IS COPYRIGHT © Western Design Ltd 2023