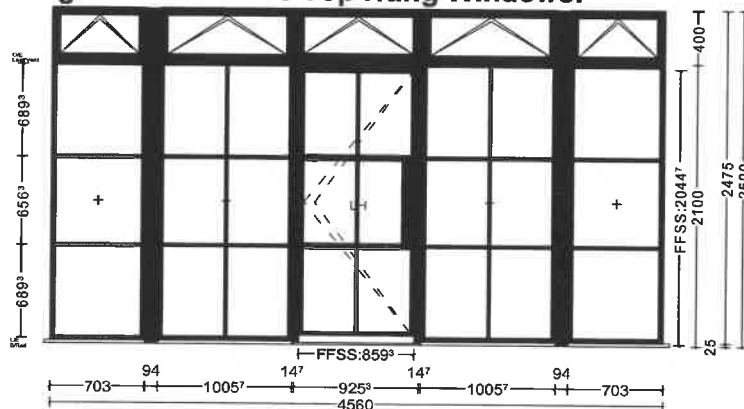


**Elevation of main entrance u shaped frame**  
 Showing return fixed lights on each end with  
 flush casement sashes in top

**\_Pos 001**  
**1 Pcs. Door Element 4560 mm x 2500 mm, Consisting of four Fixed Fields, a**  
**Single Door and five Top Hung Windows.**



Scale 1:35  
 Exterior View  
 System: SMA Alitherm  
 Heritage

**Profiles:**

Frame: W20015 OUTERFRAME BEAD + STAYS, W20270 LOW THERSHOLD, ETC457 150mm CILL

Mullion/Transom: W20034 WIDE TRANSOM

Internal Rail: W20135 DOOR TRANSOME

Window Vent: W20025 INT BEADSH FOR W20015/20035

Door Leaf: W20129 OPEN IN DOORSH EURO GROOVE

Add-On Profile: W20038 STILE EXTENSION

**Window Hardware:**

ALITHERM HERITAGE 47, Top Hung Window open Out

**Door Description:**

Door Single open In Left Hinged

Bottom Configuration:

SMA 001

Additional Articles per Element:

2 Pcs.	ACET440	CILL ANGLE BRACKET PACK 10
2 Pcs.	ACW20239BL	END CAP FOR W20139 10 PAIRS
2 Pcs.	ACET041	NOSE BRACKET VAR CILL JOINTS

Additional Hardware per Element:

4 Pcs.	OPEN IN HINGE ALI HERITAGE WP	
1 Pcs.	Primary 65mm Backset 2170mm Lock	
1 Pcs.	CENTRE LATCH KEEP RH	
4 Pcs.	M/ROOM KEEP PAS24 HERITAGE DR	
12 Pcs.	32mm Pozi Screw	
16 Pcs.	M4 FIXING PLATE + M4 INSERT	
1 Pcs.	TOP SHOOTBOLT 16X150MM	
2 Pcs.	SINGLE KEEP LOW THRESHOLD ALI+	
1 Pcs.	BOTTOM SHOOTBOLT 16X150MM	
1 Pcs.	30-45 CYLINDER	
1 Pcs.	PRO-LINEA LVR/LVR HDL GLOSS	BL

Colours:

Profiles: BL

Filling:

12 Pcs. Prepared for 28mm Thickness

**No add ons or trickle vents**

**Doc Q door sash**

**150mm cill**

**W20135 Transom/mullion to sash**

**All other bars are 25mm astragal bar**

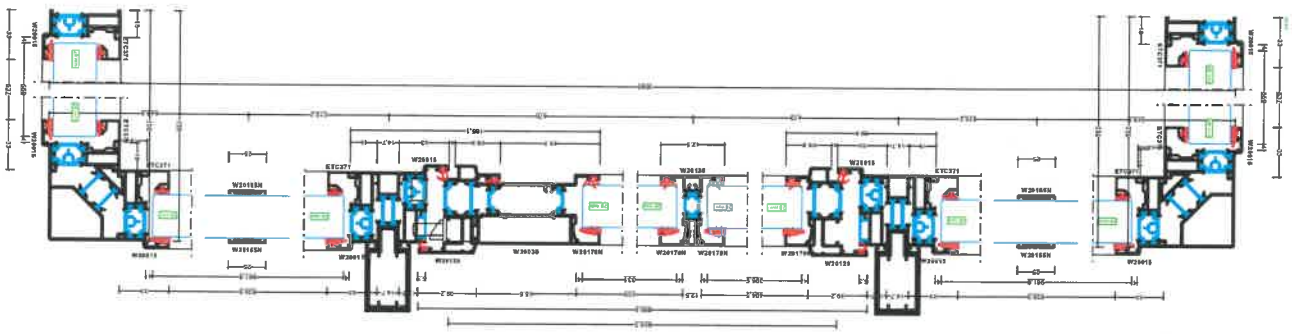
**Low threshold**

**All top vents equal height**

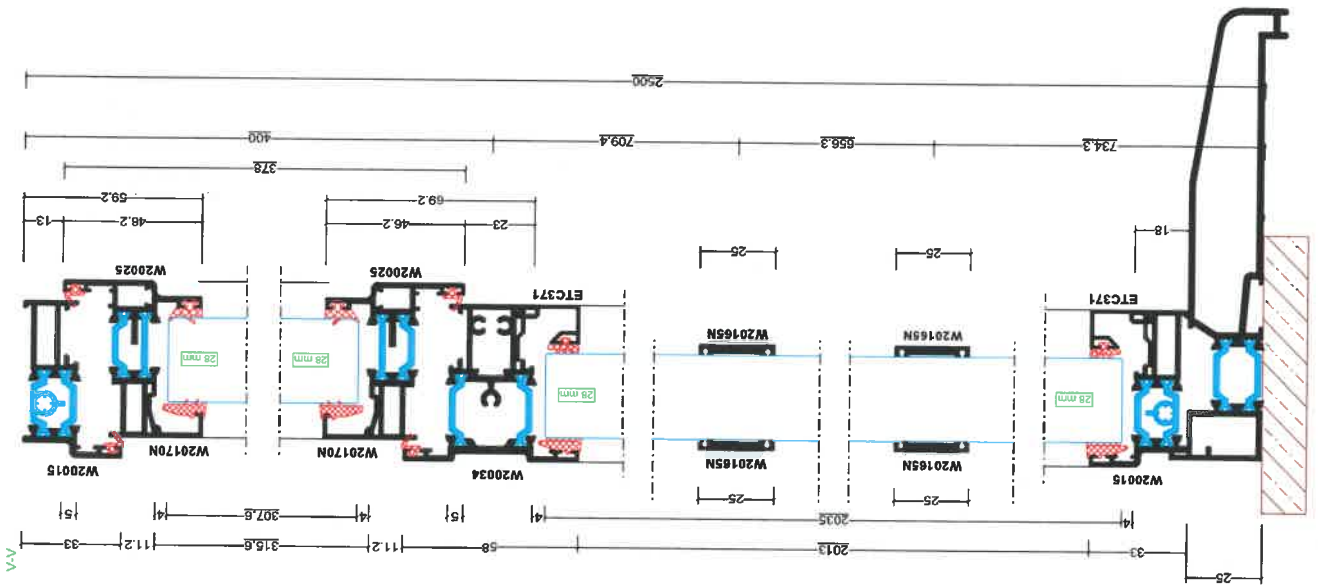
**Top vents coupled to fixed below for equal sightlines**

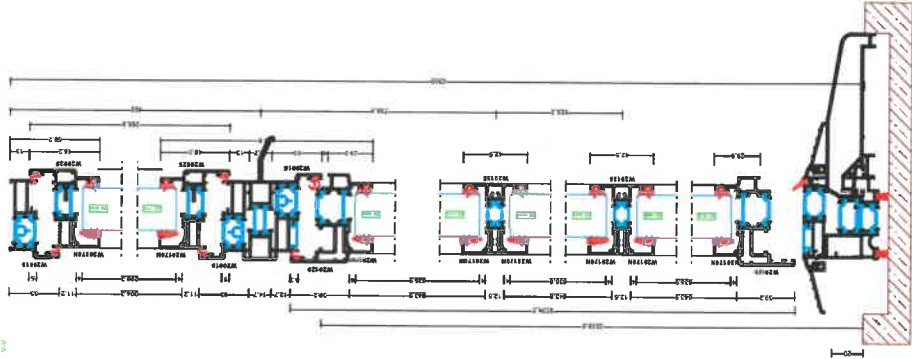
**Antique brass pear drop handles**

**Plan/horizontal section of u shaped entrance frame with fixed light returns**



**Vertical section through u shaped main entrance  
Frame shown through fixed sidelights and top flush  
casement sash**





Vertical section through u shaped main entrance frame  
 Shown through door and flush casement lights at top