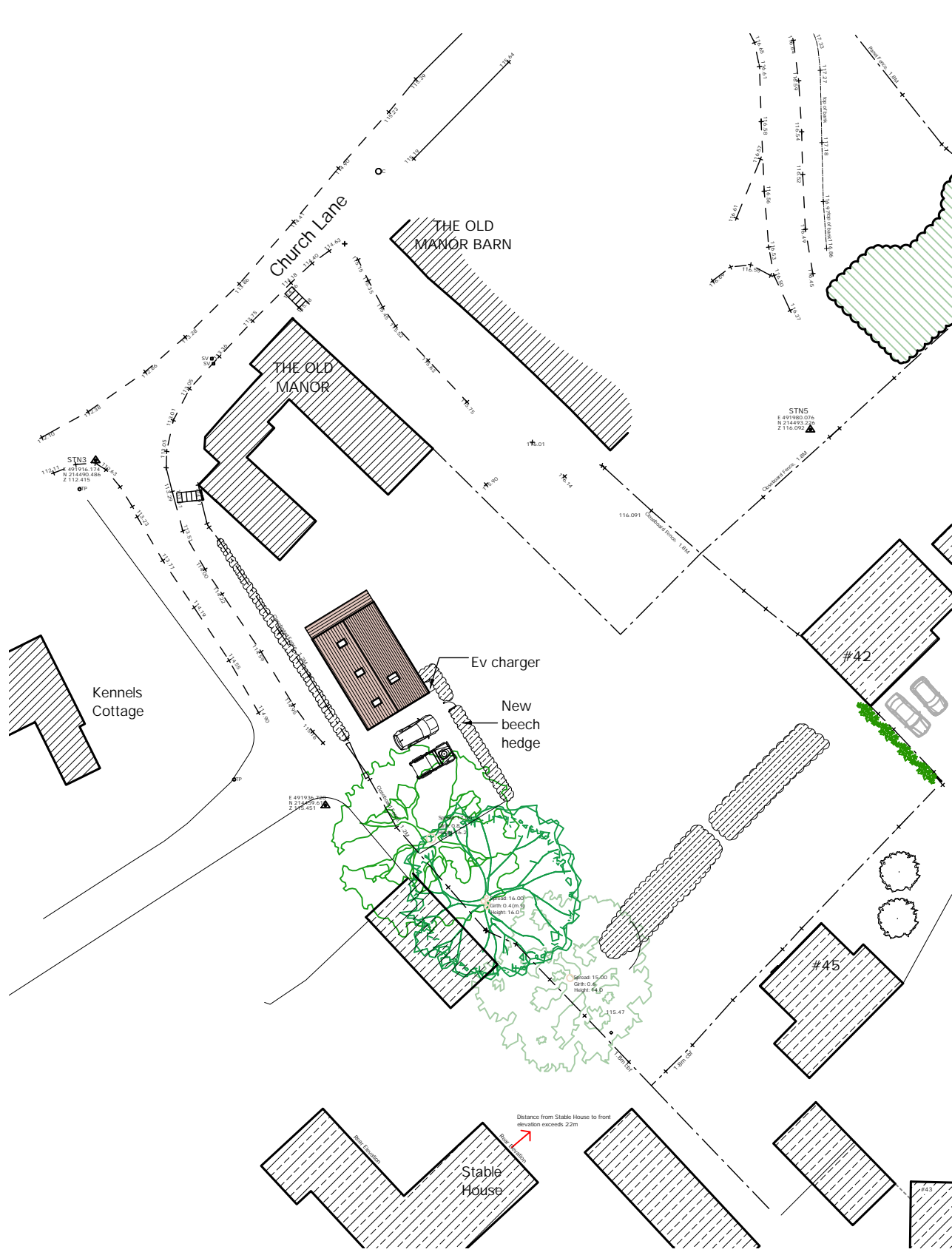
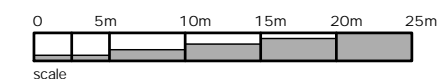


THIS DRAWING IS THE COPYRIGHT OF GUY ROBERTS ARCHITECT AND MAY NOT BE AMENDED, COPIED OR REPRODUCED WITHOUT WRITTEN PERMISSION. NO LIABILITY WILL BE ACCEPTED FOR AMENDMENTS MADE BY OTHER PERSONS.
DO NOT SCALE OFF THE DRAWINGS.



Land adjacent to #45 Lukes Lea
Marsworth
Tring
HP23 4LX

EXISTING + PROPOSED
SITE PLAN

GUY ROBERTS R.I.B.A.
2 THE CROSSING COTTAGES
74 NETHERCOTE ROAD
TACKLEY
OXON. OX5 3AT
T: 07971 970 311
E: info@guyr.co.uk

scale	date	drawn by
1:500@A3	10.12.23	GR
project	dwg. no.	rev.
2243	PA 102	

PLANNING