

# KNOLLES ROAD



## BARN ROAD 29.11.23

Trees	No.	Height	Girth (cm)	Pot Size	Specification
Acer campestre 'Elsrijk'	2	3.5-4.25m	12-14cm	CG	clear stem to 1.8m, regular crown
Betula pendula Swiss Glory	4	3.5-4.25m	12-14cm	CG	clear stem to 1.8m, regular crown
Carpinus betulus Frans Fontaine	8	3.5-4.25m	12-14cm	CG	clear stem to 1.8m, regular crown
Pinus sylvestris	4	1.5-2.0m		CG	well branched from base

Hedging	No.	Height	Pot Size	Specification
Acer campestre	30	60-90cm	1+2	BR hedge stock, 3 breaks in lower third
Carpinus betulus	43	60-90cm	1+2	BR hedge stock, 3 breaks in lower third
Crataegus monogyna	30	60-90cm	1+2	BR hedge stock, 3 breaks in lower third
Fagus sylvatica	244	60-90cm	1+2	BR hedge stock, 3 breaks in lower third
Fagus sylvatica (large stock)	70	120-150cm		BR hedge stock, 3 breaks in lower third
Ilex aquifolium	30	60-90cm		BR hedge stock, 3 breaks in lower third

Shrub planting stock	No.	Height	Pot Size	Specification
Choiysia Ternata	5	45-60cm	3L	bushy, 3 breaks in lower third
Euonymus Greenspire	19	30-40cm	3L	bushy, 3 breaks in lower third
Hebe Marjorie	20	30-40cm	3L	bushy, 3 breaks in lower third
Hedera helix Buttercup	28	45-60S	2L	3 shoots from pot level
Lonicera purpusii 'Winter Beauty'	5	45-60cm	5L	bushy, 3 breaks in lower third
Lambucus Guincho Purple	4	45-60cm	5L	bushy, 3 breaks in lower third
Potentilla Abbotswood	7	30-40cm	3L	bushy, 3 breaks in lower third
Sarcococca Confusa	7	45-60cm	3L	bushy, 3 breaks in lower third
Sarcococca humilis	12	45-60cm	3L	bushy, 3 breaks in lower third
Lavandula Hidcote	11	20-30	2L	6 shoots from pot level
Vinca minor Gertrude Jekyll	39	20-30S	1L	6 shoots from pot level

Climber stock	No.	Height	Pot Size	Specification
Clematis alpina Francis Rives	2	120-150 cm	3L	At least 2 stems from pot level
Clematis alpina Pamela Jackman	1	120-150 cm	3L	At least 2 stems from pot level
Lonicera periclymenum Belgica	1	120-150 cm	3L	At least 2 stems from pot level
Parthenocissus tricuspidata Veitchii	1	120-150 cm	3L	At least 2 stems from pot level

Herbaceous stock	No.	Height	Pot Size	Specification
Anemone hybrida September Charm	8		2L	Strong, well rooted plants
Anemone hybrida Whirlwind	19		2L	Strong, well rooted plants
Geranium macrorrhizum	39		2L	Strong, well rooted plants
Geranium macrorrhizum Album	51		2L	Strong, well rooted plants
Hebe Marjorie	23		2L	Strong, well rooted plants
Heuchera Greenfinch	15		2L	Strong, well rooted plants
Heuchera Palace Purple	8		2L	Strong, well rooted plants
Nepetta Six Hills Giant	10		2L	Strong, well rooted plants
Tiarella Cordifolia	43		2L	Strong, well rooted plants

**Grass areas**  
Lawn areas to be turfed with 'Species rich 26' turf by the Wildflower Turf company <https://wildflowerturf.co.uk/>

GENERAL LANDSCAPE NOTES TO BE READ IN CONJUNCTION WITH DEVELOPMENT GA DRAWINGS BY PENWARDEN HALE ARCHITECTS

**PREPARATION FOR SOIL PLACEMENT**

- THE SITE IS TO BE GRADED TO REDUCED LEVELS AS REQUIRED TO ACCOMMODATE THE PROPOSED SOIL DEPTHS
- ALL SITE DEBRIS, CONSTRUCTION WASTE AND ANY CONTAMINATED MATERIALS ARE TO BE REMOVED FROM PROPOSED SOFT LANDSCAPE AREAS
- ALL EXISTING AND PROPOSED SUBSOIL LAYERS ARE TO BE THOROUGHLY BROKEN AND CULTIVATED AS MAY BE REQUIRED TO RELIEVE ANY SOIL COMPACTION, TO PREVENT ANAEROBIC SOILS, AND TO ENSURE FREE DRAINAGE
- ENSURE ALL LANDSCAPE AREA SITE BASES ARE DECOMPACTED AND CULTIVATED. SITE BASE AREAS ARE TO BE INSPECTED AND APPROVED BY THE LANDSCAPE ARCHITECT PRIOR TO COVERING WITH ANY NEW SUBSOILS OR TOP SOILS

**SOILS FOR GENERAL LANDSCAPE AREAS**

- TOPSOIL AND SUBSOILS ARE TO BE NATURALLY OCCURRING SOILS AND NOT MANUFACTURED GRADED SOILS, WHERE IMPORTED TOPSOILS AND SUBSOILS ARE REQUIRED FOR LANDSCAPE WORK, THEY SHALL BE TO BS882 - GENERAL PURPOSE GRADE TOPSOIL AND BS3882 ECONOMIC GRADE TOPSOIL (FOR SUBSOIL USE) RESPECTIVELY
- FOLLOWING REMOVAL OF ALL WASTE MATERIALS AND GRADING, EXISTING AND PROPOSED SUBSOIL LAYERS ARE TO BE THOROUGHLY CULTIVATED TO RELIEVE ANY SOIL COMPACTION AND ENSURE FREE DRAINING CONDITIONS PRIOR TO PLACING TOPSOIL
- GRASS AREAS TO HAVE 100MM SOIL OVER 300MM WELL CULTIVATED SUBSOIL OVER FREE-DRAINING CLEAN SUBSOIL BASE
- SHRUB AND HEDGEROW AREAS TO HAVE 300MM TOPSOIL OVER 200MM WELL CULTIVATED SUBSOIL AND FREE DRAINING CLEAN SUBSOIL BASE
- STANDARD TREE PITS NOT LESS THAN 1500MM SQUARE BACKFILLED WITH 400MM TOPSOIL, OVER 200MM WELL CULTIVATED SUBSOIL, WITH FREE DRAINING CLEAN SUBSOIL BASE TO FIT
- ANY CULTIVATION IN EXISTING TREE ROOT PROTECTION AREAS IS TO BE CARRIED OUT BY HAND AND AVOID ROOT DAMAGE

**SOIL AMELIORANTS**

- RETAINED SOILS ARE TO BE AMELIORATED THROUGH ADDITION OF COMPOST. SOIL FIXER BIOCHAR SUPER COMPOST SF80 AT THE RATE OF 2KG PER M<sup>2</sup> FOR GENERAL PLANTING AREAS. COMPOST TO BE CAREFULLY CULTIVATED IN TO ROOTING ZONE TO AVOID ROOT CONTACT AND PROMOTE EARLY ESTABLISHMENT
- TREE SHRUB AND HEDGE PLANTING AREAS ARE TO BE FINISHED WITH 50MM DEPTH PROPRIETARY AMENITY BARK MULCH

**GENERAL PLANTING**

- ALL PLANT MATERIALS, LANDSCAPE MATERIALS AND OPERATIONS ARE TO BE CARRIED OUT IN ACCORDANCE WITH BEST HORTICULTURAL PRACTICE AND IN ACCORDANCE WITH APPROPRIATE BRITISH STANDARDS AND CODES OF PRACTICE
- TREES TO BE STAKED WITH A SINGLE 16MM SW STAKE WITH 2 NO. ADJUSTABLE TREE TIES AND PLANTED WITH A GREENBILLE URBAN LTD. RPPCA ROOTFRAM METRO IRRIGATION SYSTEM AROUND THE ROOTBALL AND NAILED TO STAKE WITH CAP CLEAR OF MULCH
- ALL PLANTING STOCK AND LAWN AREAS ARE TO BE THOROUGHLY WATERED TO FIELD CAPACITY AT PLANTING AND KEPT WATERED TO OPTIMAL GROWING CONDITIONS UNTIL HANDOVER. THEREAFTER THE MAINTENANCE CONTRACTOR IS TO CONTINUE WATERING AS REQUIRED TO ENSURE PROPER ESTABLISHMENT AND MAINTENANCE OF ALL PLANTED AREAS
- ALL PROPOSED PLANTED AREAS AND 1M BASE OF TREES ARE TO BE KEPT ENTIRELY CLEAR OF GRASS AND WEEDS FOR THE FIRST 3 YEARS FROM PLANTING

**SERVICES AND ROOT BARRIERS**

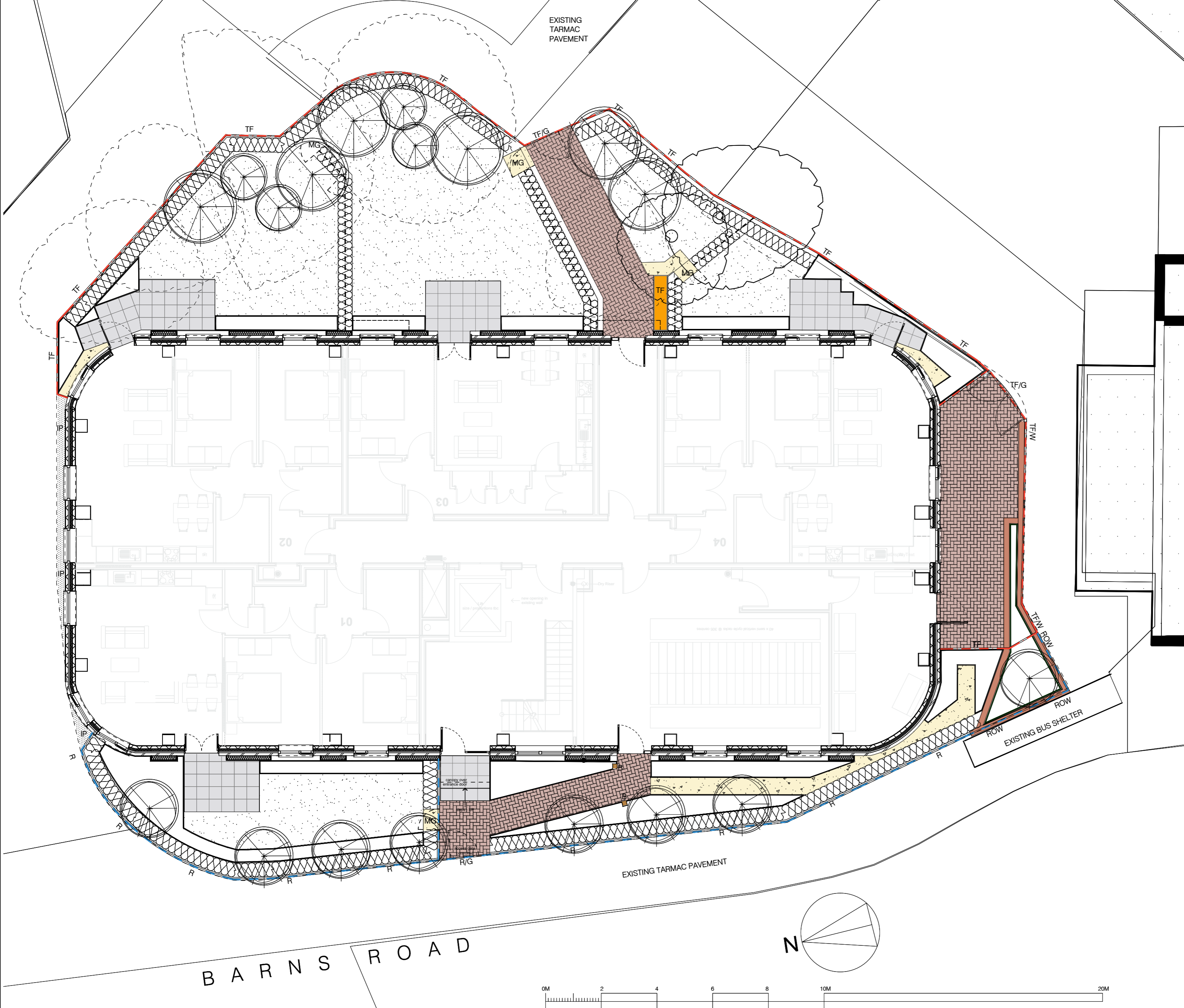
- THE CONTRACTOR IS TO CONFIRM THE LOCATION OF ALL SERVICES PRIOR TO UNDERTAKING LANDSCAPE WORKS AND PROVIDE PROTECTION TO SERVICES IN ACCORDANCE WITH BRITISH STANDARDS: ROOT BARRIER BUSH AS GREENLEAF (SEE ROOT) IS TO BE INCORPORATED WHERE TREES ARE LESS THAN SPECIFIED DISTANCE AWAY FROM SERVICES. THE ROOT BARRIER DEPTH IS TO EXTEND TO A MINIMUM OF 900MM BELOW ADJACENT SERVICES
- DETAILED BUILDING AND WALL FOUNDATION DEPTHS, TOGETHER WITH TREE ROOT BARRIERS AND OTHER MEASURES AS NECESSARY DEPENDING ON SOIL PLASTICITY, TO ENSURE THE RELATIONSHIP OF BUILDINGS WITH EXISTING AND PROPOSED TREE PLANTING CONFORMS WITH THE NATIONAL HOUSE BUILDING COUNCIL STANDARDS BUILDING NEAR TREES
- PROVIDE ROOT BARRIERS AND COMPRESSION BOARD ETC WHERE REQUIRED TO PROTECT WALLS, BUILDINGS OR OTHER STRUCTURES FROM EXISTING OR PROPOSED PLANTING MEASURES

**BIOSECURITY REQUIREMENTS**

ALL TREES, SHRUBS AND HERBACEOUS PLANTS MUST ADHERE TO BASIC BIO-SECURITY MEASURES TO PREVENT ACCIDENTAL RELEASE OF PEST AND DISEASE AND MUST FOLLOW THE GUIDELINES BELOW

AN OVERARCHING REQUIREMENT IS TO FOLLOW BS 8845: TREES FROM NURSERY TO INDEPENDENCE IN THE LANDSCAPE. RECOMMENDATIONS AND THAT IN THE INTEREST OF BIOSECURITY, TREES, SHRUBS AND OTHER PLANT MATERIAL SHOULD NOT BE IMPORTED DIRECTLY FROM EUROPEAN (OR OTHER OVERSEAS) SUPPLIERS AND PLANTED STRAIGHT INTO THE FIELD, BUT SPEND A FULL GROWING SEASON IN QUARANTINE IN A BRITISH NURSERY, WITH RELATED NURSERY INSPECTION TO ENSURE PLANT HEALTH AND TO REDUCE POTENTIAL FOR INTRODUCTION OF FOREIGN PESTS OR DISEASE.

# KNOLLES ROAD



**EXISTING TREES RETAINED**  
SEE ARBORICULTURAL SURVEY

**EXISTING TREES REMOVED**  
SEE ARBORICULTURAL SURVEY

**PROPOSED TREE PLANTING**

**SHRUB AND HERBACEOUS PLANTING - WITH PLANTING DIVISIONS**  
CLIMBERS

**HEDGE PLANTING**  
HEDGE PLANTING WITH TIMBER POST AND 900MM 3 STRAND LINE WIRE FENCE TO CENTRE TO PROVIDE REINFORCEMENT - MG = MAINTENANCE GATES TO MATCH

**LAWN AREAS - ESTABLISHED WITH SPECIES RICH TURF**

**BLOCK PAVING - PERMEABLE FINISH PAVING LAID TO NO-DIG CONSTRUCTION METHODOLOGY WITHIN ROOT PROTECTION AREAS.**

**PROPOSED FLAG PAVING TO PRIVATE TERRACE AREAS TO BE MASHALLS PERFECTA 'NATURAL' COLOUR, OR EQUAL, TO CLIENT APPROVAL**

**GRAVEL SURFACING: LIMESTONE GRAVEL - 100MM COTSWOLD BUFF CHIPPINGS**

**RETAINED RAISED BRICK PLANTER**

**TF/W** = TIMBER SLATTED FENCE SET OVER EXISTING RETAINED LOW BRICK WALL TO FORM A 1.8M BOUNDARY. FENCE STEPS FROM WALL MOUNTED TO FLOOR MOUNTED, MAINTAINING SAME OVERALL HEIGHT

**TF** = TIMBER SLATTED FENCE (WITHOUT WALL) AS 1.8M BOUNDARY. TF/G = TIMBER FENCE AND GATES AS SHOWN. 1.8M

**R** = RAILING 1.5M; **RG** = RAILING GATE 1.5M; **ROW** = RAILING ON WALL 1.2M RAILING SET OVER 0.6M PLANTER WALL TO GIVE 1.8M OVERALL HEIGHT

**B** = TIMBER BOLLARD, SQUARE SECTION 1M FINISHED HEIGHT PROVIDING TEMPORARY BIKE SUPPORT POSTS AS CYCLISTS ACCESS / EXIT THE CYCLE STORE; **PB** = EXTERNAL POST BOX ENCLOSURE

**INFILL PAVING - EXISTING TARMAC INFILL RETAINED / REINSTATED BETWEEN SITE BOUNDARY AND BUILDING**

REVISIONS  
REV DATE COMMENT

CLIENT:  
**CANTY ESTATES**

PROJECT:  
**BARN ROAD**

DRAWING TITLE:  
**PROPOSED LANDSCAPE PLAN**

DATE: NOV '23 SCALE: 1:100@A1 DRAWING NO: REV 1.5

ADAMS HABERMEHL  
40A/41 HARBERN HILL, CHARTERED LANDSCAPE ARCHITECTS  
41 THE GREEN, STEVENTON, ABBINGDON, OXON, OX13 6RR TEL: 01235 799186

# HARD LANDSCAPE