

NOTES:
 Do not scale from this drawing
 All information is to be checked on site for accuracy and fit. Only drawings with
 WD status with the most recent revision are to be used for construction. Report
 any discrepancies and omissions to Hakes - Plan data based on OS CAD data.

Status codes:
 EX = existing
 SK = preliminary sketch design drawings
 PP = drawings for planning submission
 DD = design drawings for stage E/F
 SP = space planning options
 TT = tender
 WD = working drawings for construction

NOTE: THIS DRAWING AND CONCEPTS COPYRIGHT HAKES + HAKES
 ALL RIGHTS RESERVED. NO PART OF THIS DRAWING OR DESIGN MAY BE COPIED
 PRINTED OR DISCLOSED WITHOUT PRIOR WRITTEN CONSENT

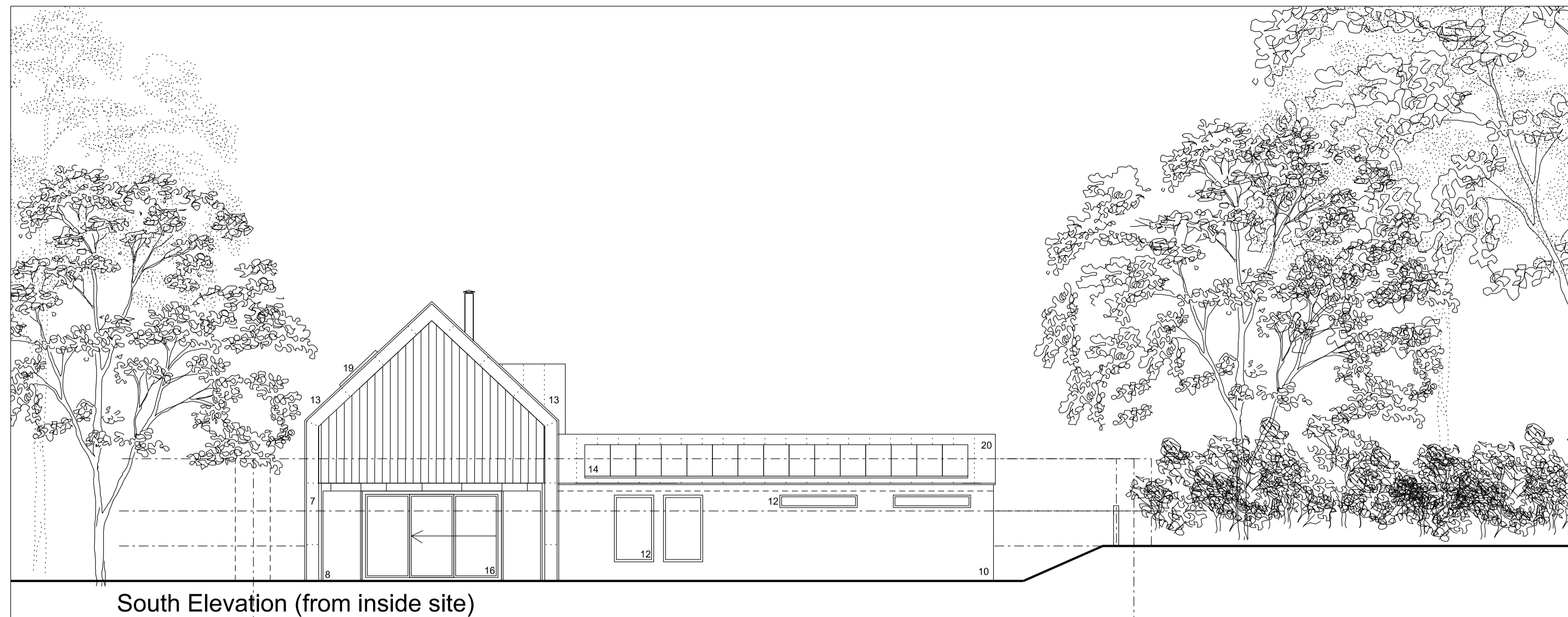
Material legend - existing and proposed

EXISTING

- 1 Gravel pathway with concrete edging
- 2 Black metal estate railing
- 3 Lawn
- 4 Established dense mixed native hedging
- 5 Existing private driveway
- 6 Residential amenity space / recreational area

PROPOSED

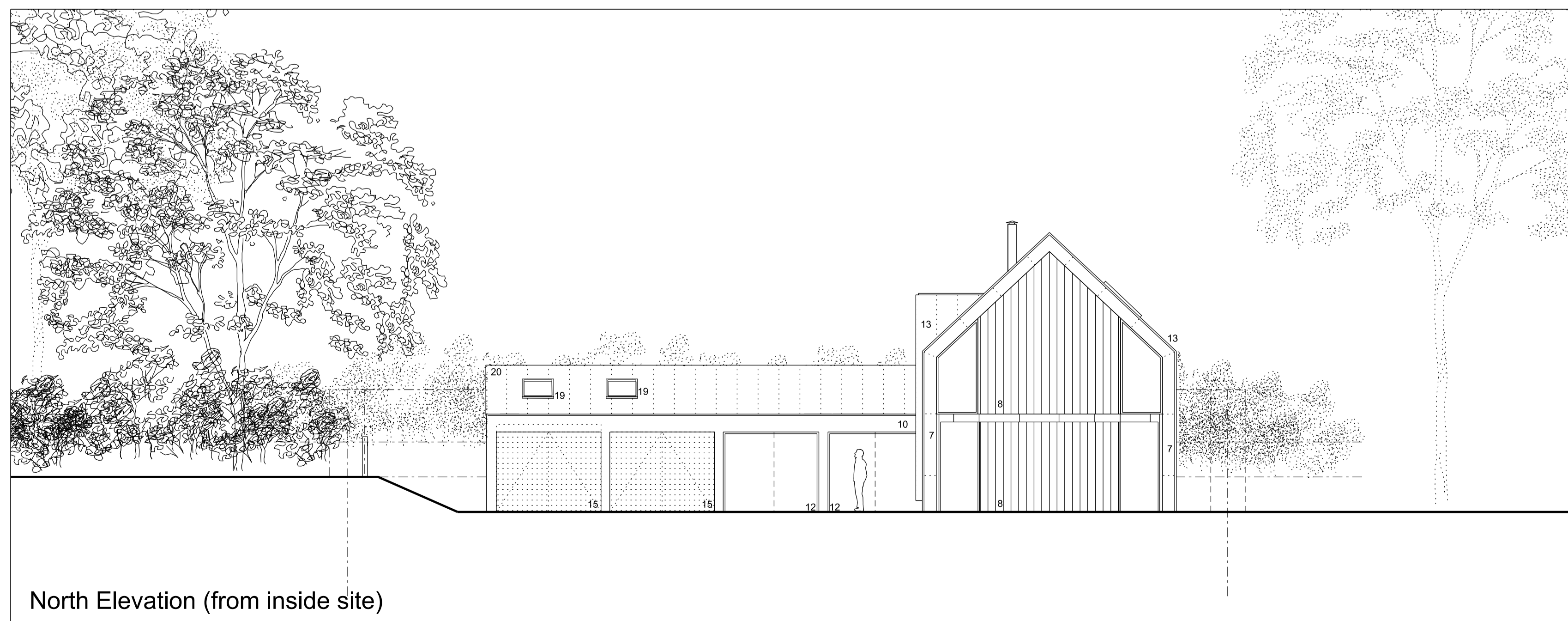
- 7 High quality heritage standing seam facade cladding
- 8 Timber hardwood cladding (possibly sourced sustainable)
- 9 Black / dark grey metal rainwater gutter and downpipes
- 10 Grey through coat render
- 11 Heritage mixed brick walled garden wall with piers
- 12 Dark grey high efficiency aluminium windows and doors
- 13 Heritage term coat roofing standing seam - weathers to dull grey like lead
- 14 Low profile solar pannels for power and internal LED lighting
- 15 Timber effect garage doors
- 16 Grey aluminium sliding window
- 17 Heritage tumbled grey block porous and on site soakaway - to match existing
- 18 Grey timber effect door with vision pannel
- 19 Low profile heritage rooflights
- 20 Traditional grey slate roof



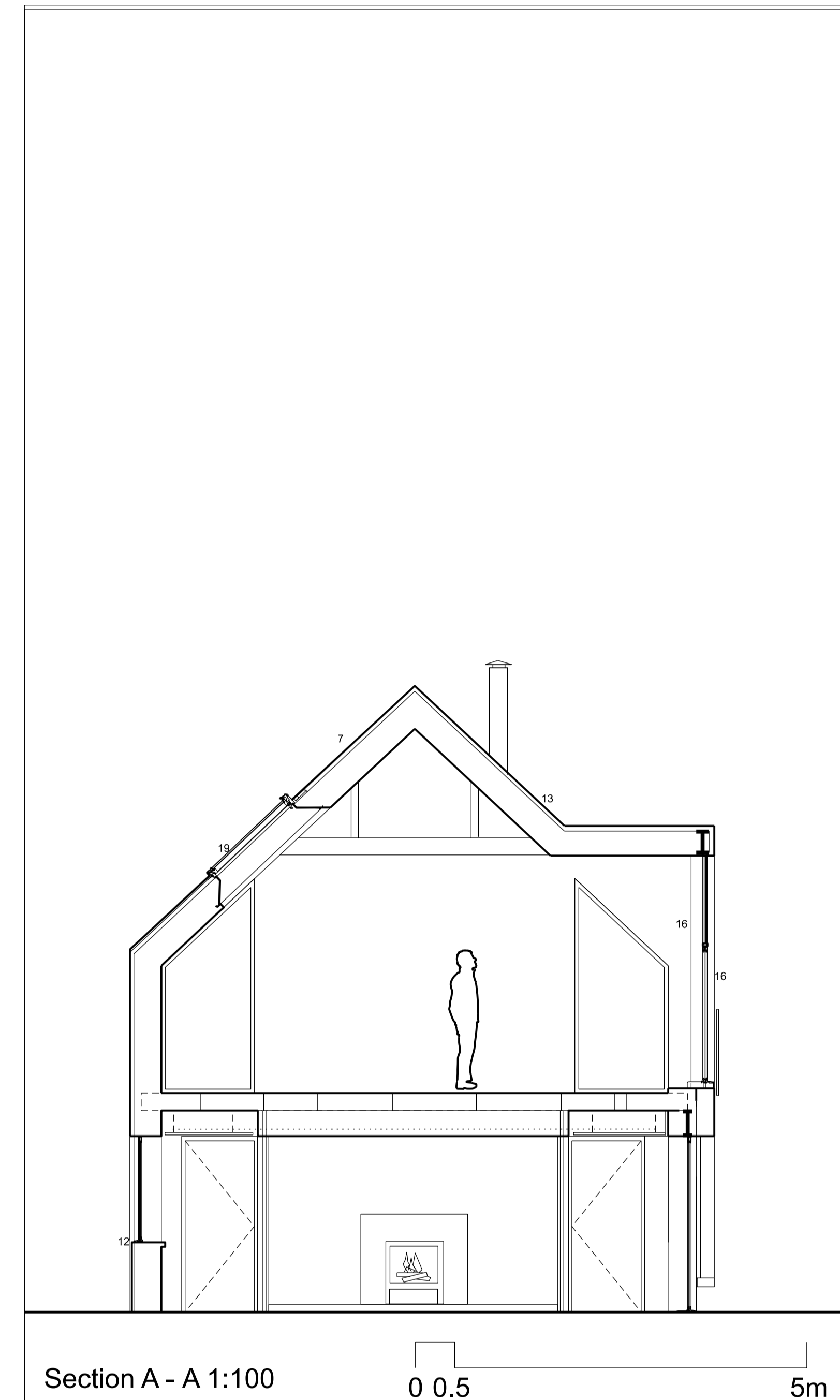
South Elevation (from inside site)



South Elevation (from Brookdale site with planted screening)



North Elevation (from inside site)



Section A - A 1:100

0 0.5 5m



Rev	Date	Description
A	6.12.23	Issued for planning - section size increased
	06.11.23	Issued for planning

PLANNING

Brookdale Barn

Proposed North and South
 elevations and section A-A