

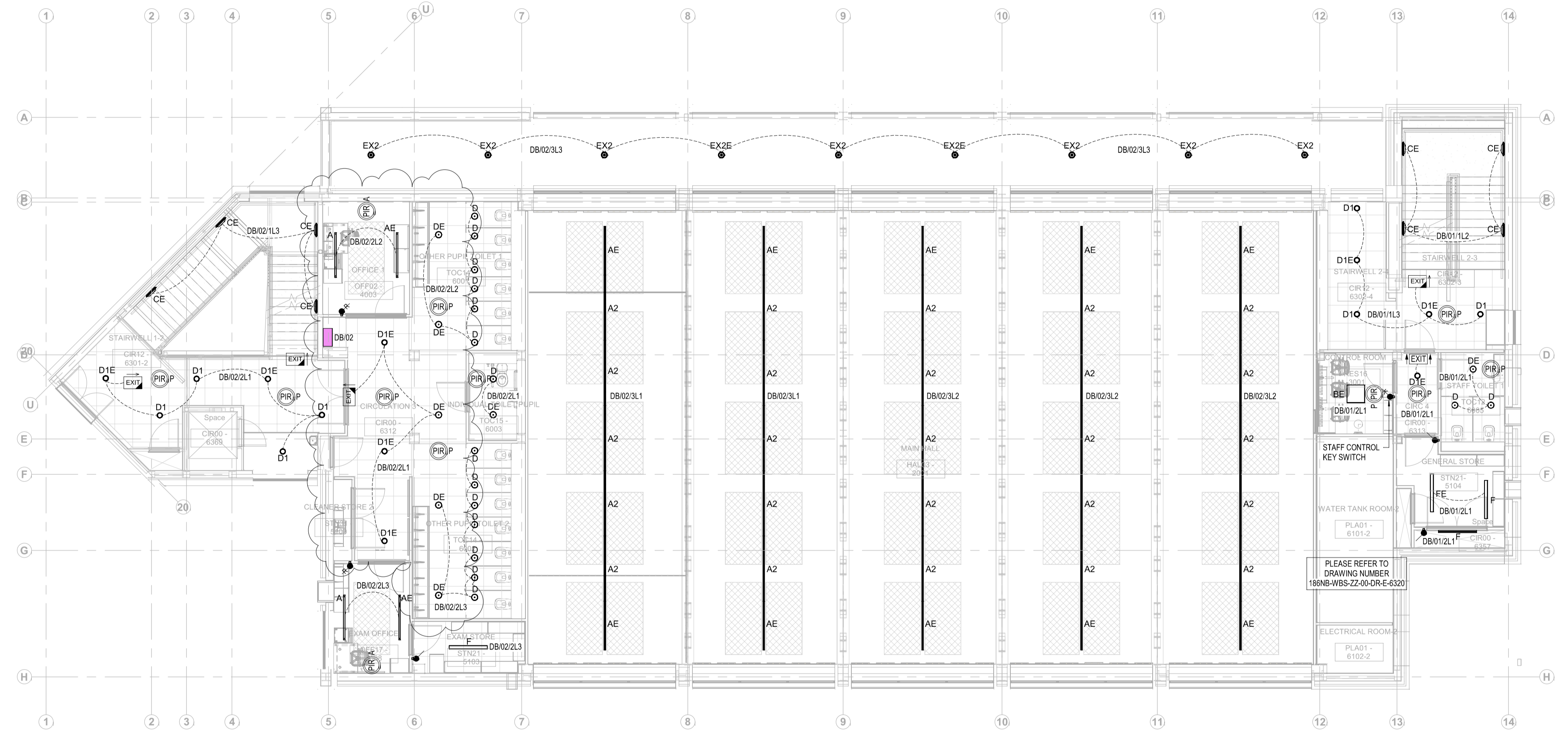
This drawing should not be scaled. Dimensions to be verified on site. Any discrepancies should be referred to the Engineer prior to work being put in hand. This drawing is the property of Waterman Building Services Limited and is issued on the condition that it is not copied, reproduced, retained or disclosed to any unauthorised person, either wholly or in part without the consent in writing of Waterman Building Services Limited. Pickfords Wharf Clink Street London SE1 9DG United Kingdom t+44 20 7928 7988

GENERAL NOTES

FOR ALL SETTING OUT OF INTERNAL SERVICES REFER TO ARCHITECT'S SETTING OUT ELEVATIONAL DRAWINGS

- LIGHTING INSTALLATION**
- ALL OTHER DISCIPLINES' SPECIFICATIONS SHALL BE READ IN CONJUNCTION WITH THE WATERMAN BUILDING SERVICES SPECIFICATION AND DRAWINGS AS WELL AS ARCHITECTS, STRUCTURAL ENGINEERS, ACOUSTIC ENGINEERS AND FIRE CONSULTANTS. ANY DISCREPANCIES BETWEEN ANY DOCUMENT, DRAWING OR SCHEDULE SHOULD BE CLARIFIED AT TENDER OR THE MOST COST ONERIOUS OPTION SHALL BE DEEMED TO HAVE BEEN ALLOWED FOR.
 - WHERE LIGHT SWITCH BACK BOX PENETRATES A FIRE RATED PARTITION, AN INTUMESCENT GASKET SHALL BE INSTALLED AT THE REAR OF THE BOX TO MAINTAIN THE FIRE RATING OF THE PARTITION. GASKET TO BE TESTED TO BS 476 P20 & P22 FOR UP TO 120 MINUTES, MATCHING THE RATING OF THE PARTITION. ACOUSTICALLY TESTED.
 - SEE SMALL POWER LAYOUTS FOR POSITIONS OF TEACHING WALLS, TEACHING WALLS TO HAVE LOCAL SWITCH TO TURN LIGHTING IN AREA OFF AND ON.
 - SEE LIGHTING STRATEGY FOR THE REQUIRED LIGHTING LEVELS, EMERGENCY LIGHTING LEVELS, CONTROL METHODS, REQUIREMENTS FOR DAYLIGHT DIMMING AND REQUIREMENTS FOR TEACHING WALL SWITCHING.
 - FOR FULL LIGHTING DETAILS REFER TO THE ELECTRICAL SCHEDULES SPECIFICATION WHICH CONTAINS THE LIGHTING SCHEDULE.

- LEGEND:**
- 1 GANG 1 WAY SWITCH
 - ⊙ RETRACTIVE SWITCH
 - ⊙ KEY SWITCH
 - ⊙ OR OVERRIDE SWITCH
 - EXIT↑ CEILING MOUNTED EXIT SIGN
 - EXIT↓ WALL MOUNTED EXIT SIGN
 - ▽ WALL MOUNTED MICROWAVE SENSOR
 - ⊙ LONG RANGE CEILING MOUNTED MICROWAVE SENSOR
 - ⊙ PIR/P CEILING MOUNTED PRESENCE DETECTOR
 - ⊙ PIR/A CEILING MOUNTED ABSENCE DETECTOR
 - ⊙ PIR/A D CEILING MOUNTED DAYLIGHT ABSENCE DETECTOR



C02	18.10.23	MEP CLOSE OUT COMMENTS	FJ
C01	06.05.23	CONSTRUCTION ISSUE	ML
P1	07.02.22	PRELIMINARY ISSUE	ML
Rev	Date	Description	By
Amendments			

Project
ST JOAN OF ARC SCHOOL

Title
**Electrical
Lighting & Emergency Lighting
Layout
First Floor**

Client
KIER CONSTRUCTION



Halifax House Halifax Place Nottingham NG1
1CN
t+44 115 948 2612
mail@watermangroup.com www.watermangroup.com

Subsidiary
FOR CONSTRUCTION A5

Designed By
ML Checked By
AW Waterman Ref.
BSD14206

Drawn By
AS Date
07.02.2022 Scales @ A1
1: 100

Project - Originator - Volume - Level - Type - Role - Number
Revision

186NB-WBS-ZZ-01-DR-E-6321 C02

186NB-WBS-ZZ-01-DR-E-6321