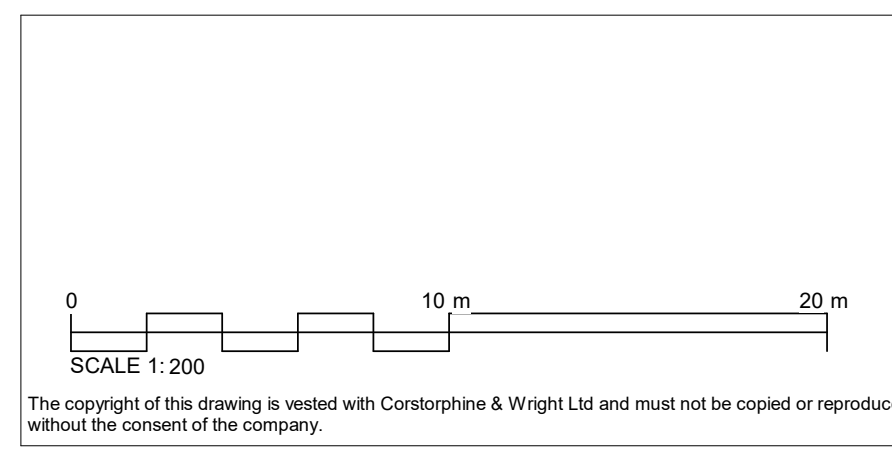




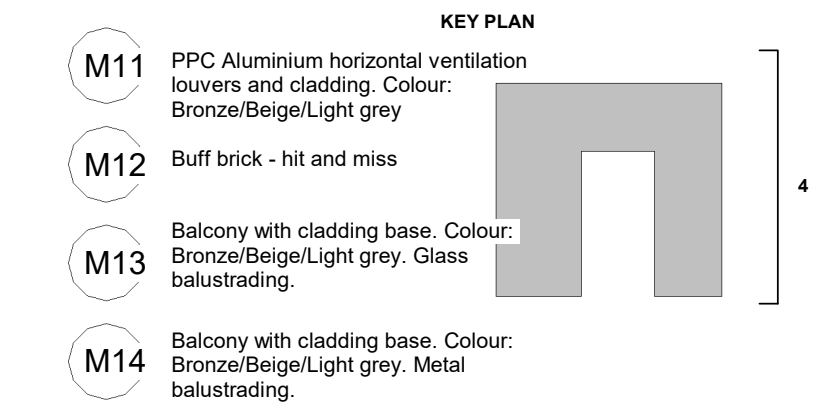
NOTE: Landscaping and structural information is indicative only.  
Refer to visuals for landscaping information.



Rev.	Description	Date	Drawn	Chk.
P07	S73 pack issue following Fire Engineer's feedback	23.10.23	LF	TM
P06	Height adjusted	22.08.22	RKo	TM
P05	Planning Amendment - material updates	04.07.22	RKo	TM
P04	Planning Issue	31.03.22	LF	TM
P03	Planning Issue	23.03.22	LF	TM
P02	Planning Issue	08.03.22	RKo	TM
SK-2	Issue for coordination	18.20.22	RKo	TM
SK-1	Issue for information	15.02.22	RKo	TM
SK-0	Issue for information	08.02.22	RKo	TM
P01	Planning Issue	14.12.21	RKo	TM

**MATERIALS KEY**

- M1 Pre-cast concrete
- M2 PPC Aluminium curtain walling system  
Colour: Bronze/Beige/Light grey
- M3 PPC Aluminium window. Colour:  
Bronze/Beige/Light grey
- M4 PPC Aluminium ventilation louvers.  
Colour: Bronze/Beige/Light grey
- M5 PPC Aluminium cladding. Colour:  
Bronze/Beige/Light grey
- M6 Buff brick - stretcher bond
- M7 Buff brick - soldier course
- M8 Buff brick - corbelling detail
- M9 Light brick - stretcher bond
- M10 Light brick - soldier course



Client:  
**SKYBRIDGE**  
Project:  
**TK Maxx, Watford**  
Drawing Title:  
**PROPOSED ELEVATIONS 4 - EAST**  
Drawing Status:  
**PLANNING**

**Corstorphine & Wright**  
Birmingham Studio  
Alpha Building, Suffolk Street Queensway, Birmingham, B1 1TT  
0121 737 8350  
corstorphine-wright.com  
Drawing No.  
**21473-CW-XX-ZZ-A-0353**  
Revision  
**P07**  
Drawn: VD, Checked: TM, Paper Size: A1, Scale: 1 : 200, Date: DEC 2021