

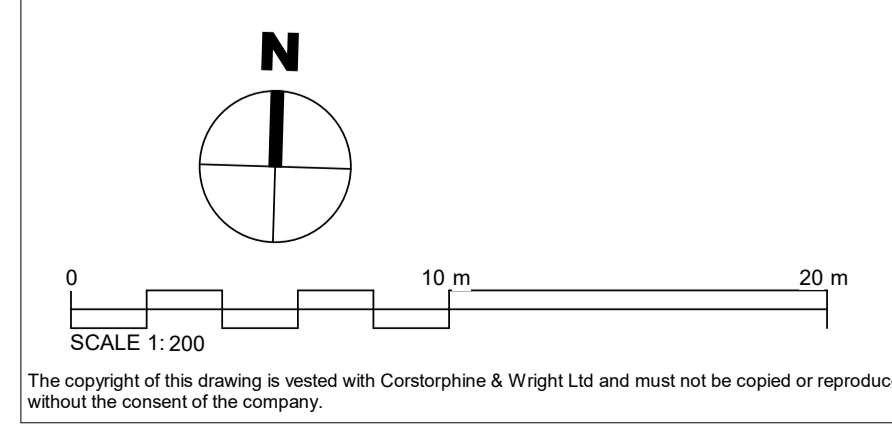
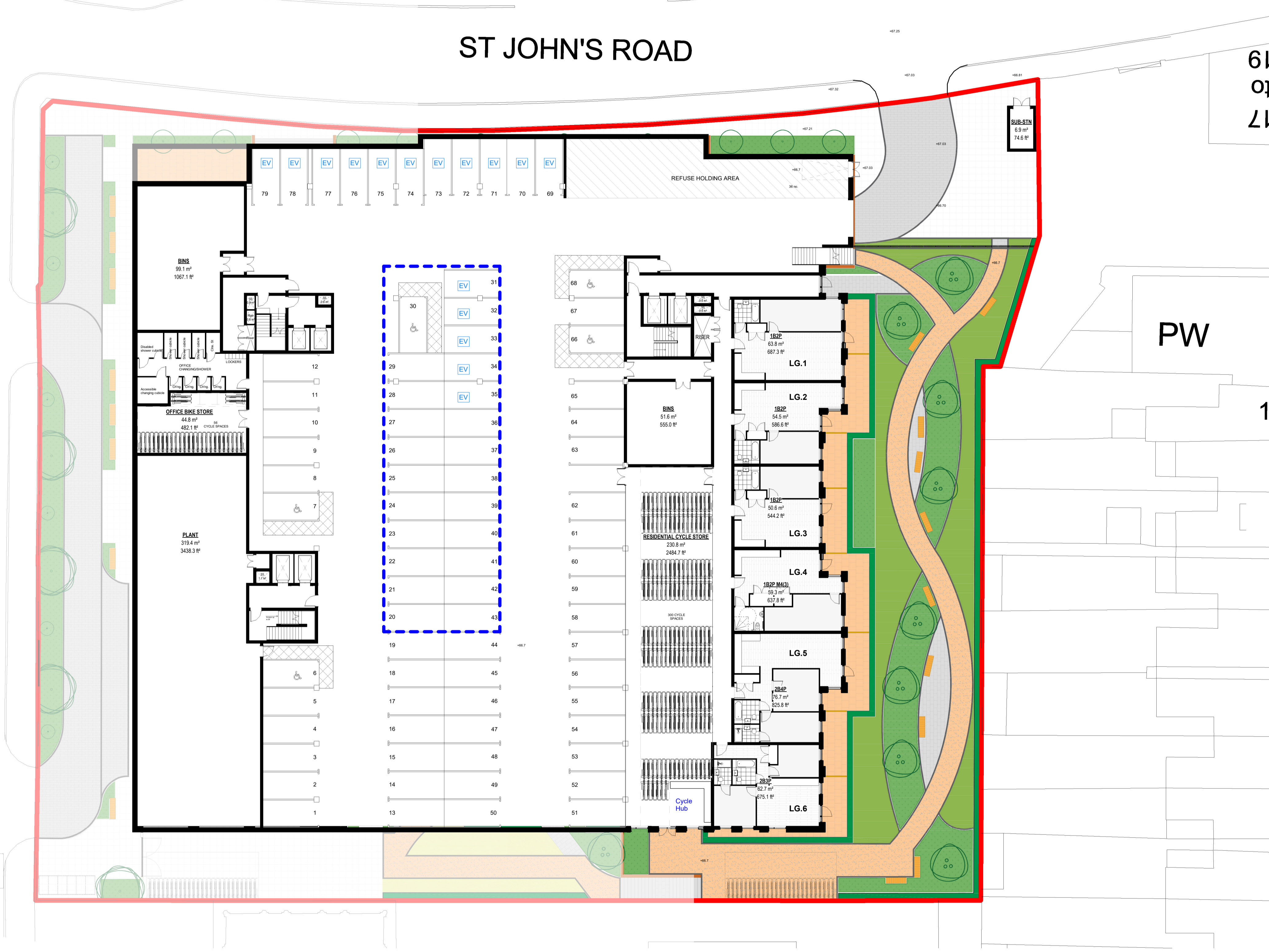
CLARENDON ROAD

ST JOHN'S ROAD

17
to
19

PW

1.



Rev.	Description	Date	Drawn	Chk.
P13	Amendment to stair core following further co-ordination with Fire Engineer	22.11.23	LF	TM
P12	Amendment to stair core following further co-ordination with Fire Engineer	22.11.23	LF	TM
P11	S73 revision cloud adjustments to plans	26.10.23	LF	TH
P10	S73 pack issue following Fire Engineer's feedback	23.10.23	LF	TM
P09	M4(3) apartment layouts added to GA plans	02.08.23	LF	TH
P08	Developed Landscape Scheme Added	18.01.23	TM	TH
P07	Office parking allocation defined. Cycle storage reconfigured to increase provision.	05.12.22	TM	TM
P06	Issue for information	07.11.22	DD	
P05	Planning Issue	31.03.22	LF	TM
P04	Planning Issue	31.03.22	LF	TM
P03	Planning Issue	23.03.22	LF	TM
P02	Planning Issue	08.03.22	RKo	TM
P01	Planning Issue	14.12.21	RKo	TM

--- Office parking allocation (24 spaces). Painted demarcation to define allocated spaces.

NOTE: Landscaping and structural information is indicative only.

Client:
SKYBRIDGE
Project:
TK Maxx, Watford
Drawing Title:
PROPOSED LOWER GROUND
FLOOR PLAN
Drawing Status:
PLANNING

Corstorphine & Wright
Birmingham Studio
Alpha Building, Suffolk Street Queensway, Birmingham, B1 1TT
0121 737 8350
corstorphine-wright.com
Drawing No.
21473-CW-XX-B1-DR-A-0310
Revision
P13
Drawn
VD
Checked
TM
Paper Size
A1
Scale
1 : 200
Date
DEC 2021