

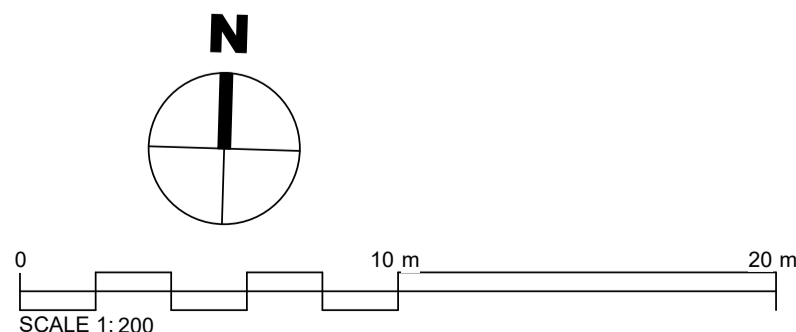
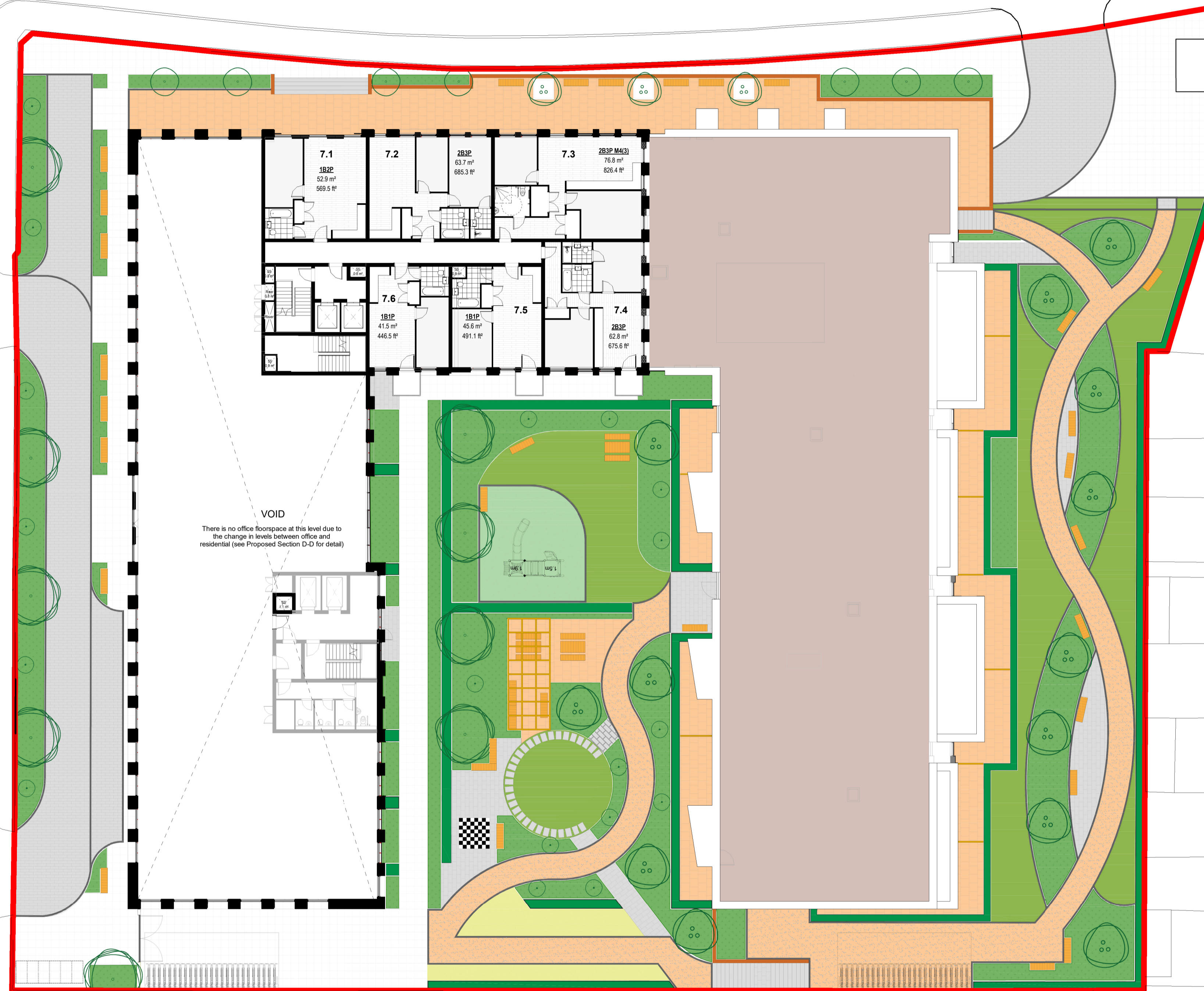
CLARENDON ROAD

ST JOHN'S ROAD

17
to
19

PW

1.



P07	Amendment to stair core following further co-ordination with Fire Engineer	22.11.23	LF	TM
P06	S73 revision cloud adjustments to plans	26.10.23	LF	TH
P05	S73 pack issue following Fire Engineer's feedback	23.10.23	LF	TM
P04	Issue for information for S73 pack of plans containing second stair core and latest landscaping	29.09.23	LF	DC
P03	M4(3) apartment layouts added to GA plans	02.08.23	LF	TH
P02	Issue for information	07.11.22	DD	
P01	Planning Amendments - Additional section, level adjustments and individual plan for Level 7	27.06.22	LF	TM
Rev.	Description	Date	Drawn	Chk.

Client:
SKYBRIDGE
Project:
TK Maxx, Watford
Drawing Title:
PROPOSED LEVEL 7
Drawing Status:
PLANNING

Corstorphine & Wright

Birmingham Studio
Alpha Building, Suffolk Street Queensway, Birmingham, B1 1TT
0121 737 8350
corstorphine-wright.com

Drawing No. 21473-CW-XX-07-DR-A-0318				Revision P07
Drawn	Checked	Paper Size	Scale	Date
VD	TM	A1	1 : 200	NOV 2021

The copyright of this drawing is vested with Corstorphine & Wright Ltd and must not be copied or reproduced without the consent of the company.