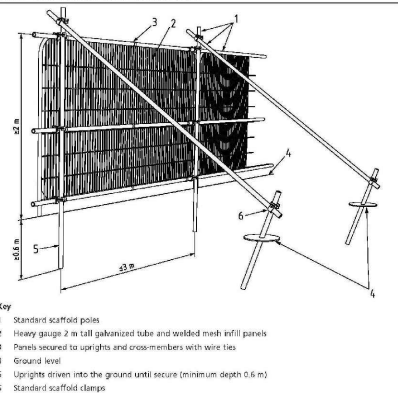
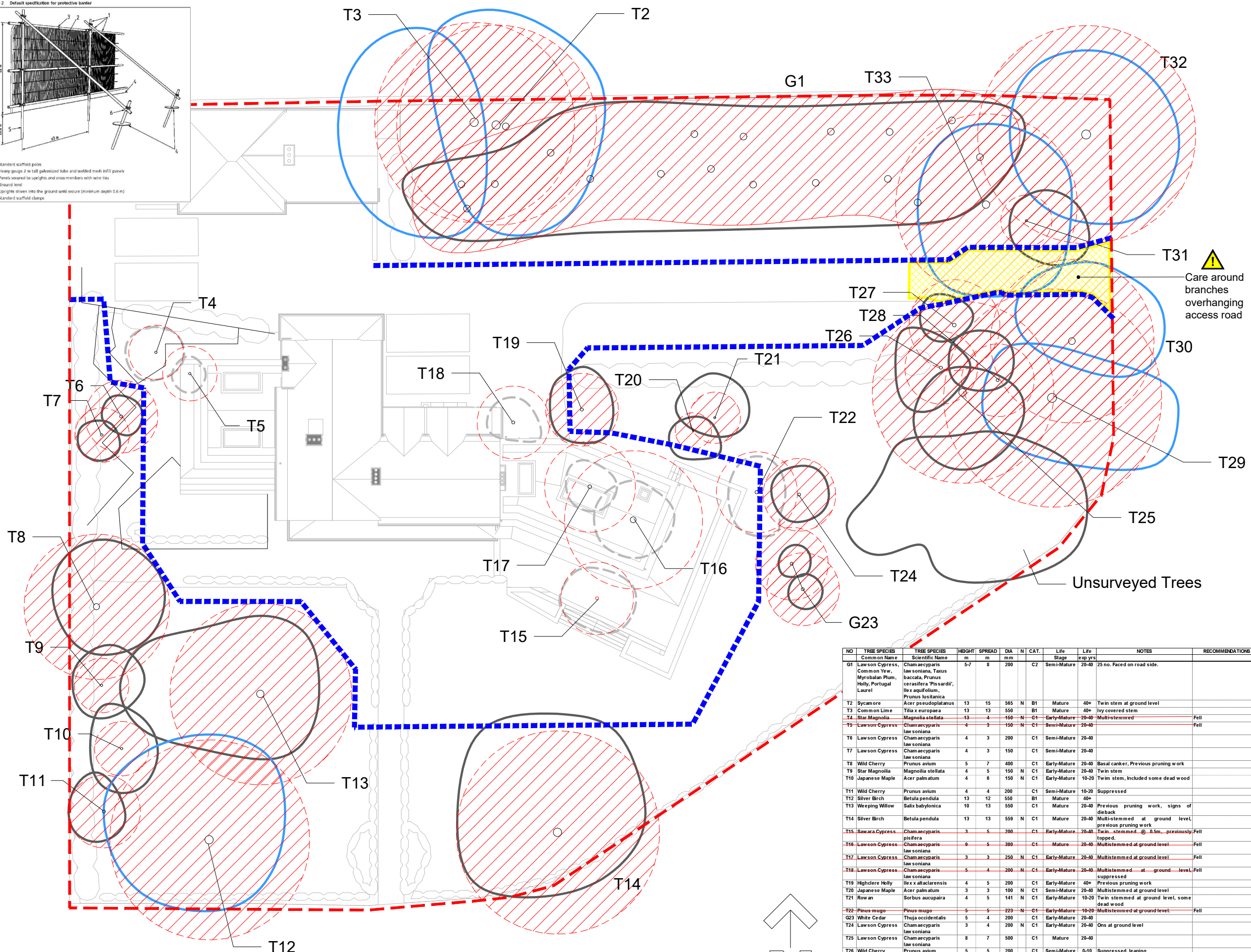


BS5837:2012 Figure 2  
Figure 2 Default specification for protective barrier



- Key
- Standard scaffold poles
  - Heavy gauge 2 m tall galvanized tube and welded mesh infill panels
  - Panels secured to uprights and crossmembers with wire ties
  - Ground level
  - Uprights driven into the ground until secure (minimum depth 0.6 m)
  - Standard scaffold clamps



TREE SURVEY TO BS5837:2012

- KEY**
- | COLOUR | QUALITY                                    | DESCRIPTION  |
|--------|--|--|
| GREEN  | <b>A: HIGH</b><br>retention most desirable | Vigorous healthy good form, visually important, historic or rare   |
| BLUE   | <b>B: MODERATE</b><br>retention desirable  | Slightly impaired condition, numerous immature, 'A' potential      |
| GREY   | <b>C: LOW</b><br>could be retained         | Adequate condition requiring minimal surgery                       |
| RED    | <b>U: FELL</b><br>Unsuitable for retention | Dead dying, dangerous insecure rooting, significant fungal disease |
| GREEN  | <b>SHRUBS</b>                              |  |
- SUB-CATEGORY:**
- ARBORICULTURAL
  - LANDSCAPE
  - CULTURAL/CONSERVATION
- Site Boundary

In accordance with BS5837:2012 'Trees in relation to design, demolition and construction', offsite trees within a distance equal to 12x stem diameter from boundary should be surveyed. In accordance with good working practice, all trees within 12m of the site boundary have been surveyed.

The original of this drawing is produced in colour - a monochrome copy should not be relied upon.

**LIMITATION OF THIS SURVEY**  
This survey records amenity quality and desirability of tree retention in relation to proposed construction by visual inspection from ground level where accessible.

It does not constitute a Tree Inspection or detailed report on condition.

Tree heights and spread approximate. The diameter of single stem trees is taken at 1.5m above ground level. For the diameter of multistemmed trees, each multistem is measured at 1.5m above ground level and calculated to give a notional diameter as if all multistems were fused into one stem.

The branch spread is an accurate representation of the crown as clause 4.4.2.5 (e)

Tree inspections should take place annually in September/October when trees are in leaf.

Several trees have girdling damage by wire or rope garting. This is noted where visible. There may be other girdling damage not visible due to density of shrubberies. Detailed inspection of retained trees should be carried out at time of site clearance.

**TREE CONSTRAINTS**

- ROOT PROTECTION AREA (RPA)  
Area equivalent to circle of radius 12 x stem diameter at 1.5m

**TREE PROTECTION**

- TREES TO BE REMOVED (with root protection area)
- Scaffold Protective Fence as BS5837:2012 Figure 2
- Existing Hard Surfacing within RPA's of trees at entrance to be retained throughout the development.

**REVISION:**  
A. Updated Proposed Site Plan and amendments to tree protection measures and schedule. IG 27-10-2023

Based on Peak Architects Proposed Site Plan Drawing No. 560-PKA-XX-ZZ-DR-A-2400 Rev P0, dated 2023/10/27

**Weddle Landscape Design**  
LANDSCAPE ARCHITECTURE  
ENVIRONMENTAL PLANNING  
Mews Studio, Charnwood House, Tel (0114) 250 1181  
8 Kenwood Bank, Sheffield S7 1NU Fax (0114) 250 1188  
www.weddles.co.uk mail@weddles.co.uk

Job 17 SOMMERSALL LANE, CHESTERFIELD

Title  
**TREE PROTECTION PLAN**

scale@A3	drawn	date	drawing number	revision
1:250	EH	MAY 23	1571-003	-

NO	TREE SPECIES	Common Name	Scientific Name	HEIGHT	SPREAD	DB	N	CAT.	Life	Life	Life	NOTES	RECOMMENDATIONS
				m	m	mm			Stage	Stage	Stage		
G1	Lawson Cypress, Common Yew, Myrobalan Plum, Holly, Portugal Laurel	Chamaecyparis lawsoniana, Taxus baccata, Prunus cerasifera 'Pissardi', Ilex aquifolium, Prunus lusitanica	5-7	8	200			C2	Semi-Mature	20-40	25 no.	None	None
T2	Sycamore	Acer pseudoplatanus	13	15	565	N	B1	Mature	40+	40+	40+	Twin stem at ground level	
T3	Common Lime	Tilia x europaea	13	13	550	B1	Mature	40+	40+	40+	40+	Ivy covered stem	
T4	Star Magnolia	Magnolia stellata	13	4	150	N	C1	Early-Mature	20-40	20-40	20-40	Multistemmed	Fell
T5	Lawson Cypress	Chamaecyparis lawsoniana	4	3	150	N	C1	Semi-Mature	20-40	20-40	20-40	Multistemmed	Fell
T6	Lawson Cypress	Chamaecyparis lawsoniana	4	3	200	N	C1	Semi-Mature	20-40	20-40	20-40		
T7	Lawson Cypress	Chamaecyparis lawsoniana	4	3	150	N	C1	Semi-Mature	20-40	20-40	20-40		
T8	Wild Cherry	Prunus avium	5	7	400	N	C1	Early-Mature	20-40	20-40	20-40	Basal canker, Previous pruning work	
T9	Star Magnolia	Magnolia stellata	4	5	150	N	C1	Early-Mature	20-40	20-40	20-40	Twin stem	
T10	Japanese Maple	Acer palmatum	4	6	150	N	C1	Early-Mature	10-20	10-20	10-20	Twin stem, Included some dead wood	
T11	Wild Cherry	Prunus avium	4	4	200	N	C1	Semi-Mature	10-20	10-20	10-20	Suppressed	
T12	Silver Birch	Betula pendula	13	12	550	B1	Mature	40+	40+	40+	40+		
T13	Weeping Willow	Salix babylonica	10	13	550	C1	Mature	20-40	20-40	20-40	20-40	Previous pruning work, signs of dieback	
T14	Silver Birch	Betula pendula	13	13	550	N	C1	Mature	20-40	20-40	20-40	Multistemmed at ground level, previous pruning work	
T15	Sawara Cypress	Chamaecyparis pisifera	3	5	200	N	C1	Early-Mature	20-40	20-40	20-40	Twin stem, med. @ 0.5m, previously Fell topped.	
T16	Lawson Cypress	Chamaecyparis lawsoniana	9	5	300	N	C1	Mature	20-40	20-40	20-40	Multistemmed at ground level	Fell
T17	Lawson Cypress	Chamaecyparis lawsoniana	3	3	250	N	C1	Early-Mature	20-40	20-40	20-40	Multistemmed at ground level	Fell
T18	Lawson Cypress	Chamaecyparis lawsoniana	5	4	200	N	C1	Early-Mature	20-40	20-40	20-40	Multistemmed at ground level	Fell
T19	Higdlere Holly	Ilex x altclarendis	4	5	200	N	C1	Early-Mature	40+	40+	40+	Previous pruning work	
T20	Japanese Maple	Acer palmatum	3	3	100	N	C1	Semi-Mature	20-40	20-40	20-40	Multistemmed at ground level	
T21	Rowan	Sorbus aucuparia	4	5	141	N	C1	Early-Mature	10-20	10-20	10-20	Twin stemmed at ground level, some dead wood	
T22	Pinus mugo	Pinus mugo	5	5	223	N	C1	Early-Mature	10-20	10-20	10-20	Multistemmed at ground level	Fell
G23	White Cedar	Thuja occidentalis	5	4	200	C1	Early-Mature	20-40	20-40	20-40	20-40		
T24	Lawson Cypress	Chamaecyparis lawsoniana	3	4	200	N	C1	Early-Mature	20-40	20-40	20-40	Ons at ground level	
T25	Lawson Cypress	Chamaecyparis lawsoniana	8	7	500	N	C1	Mature	20-40	20-40	20-40		
T26	Wild Cherry	Prunus avium	5	5	200	N	C1	Semi-Mature	0-10	0-10	0-10	Suppressed, leaning	
T27	Higdlere Holly	Ilex x altclarendis	4	3	250	N	C1	Early-Mature	40+	40+	40+	Previous pruning work	Facilitating pruning to 5.2m
T28	Myrobalan Plum	Prunus cerasifera	4	3	200	N	C1	Early-Mature	10-20	10-20	10-20	Multistemmed at 0.5m, suppressed lean,	
T29	Horse Chestnut	Aesculus hippocastanum	11	13	600	B1	Mature	20-40	20-40	20-40	20-40	Previous pruning work, signs of dieback	
T30	Horse Chestnut	Aesculus hippocastanum	11	10	450	B1	Mature	20-40	20-40	20-40	20-40		Facilitating pruning to 5.2m
T31	Hawthorn	Crataegus monogyna	6	6	141	N	C1	Early-Mature	20-40	20-40	20-40	Suppressed, leaning	Facilitating pruning to 5.2m
T32	Horse Chestnut	Aesculus hippocastanum	12	11	600	B1	Mature	20-40	20-40	20-40	20-40		
T33	Common Lime	Tilia x europaea	13	12	500	B1	Mature	20-40	20-40	20-40	20-40	Ivy covered stem, some dead wood.	Facilitating pruning to 5.2m

