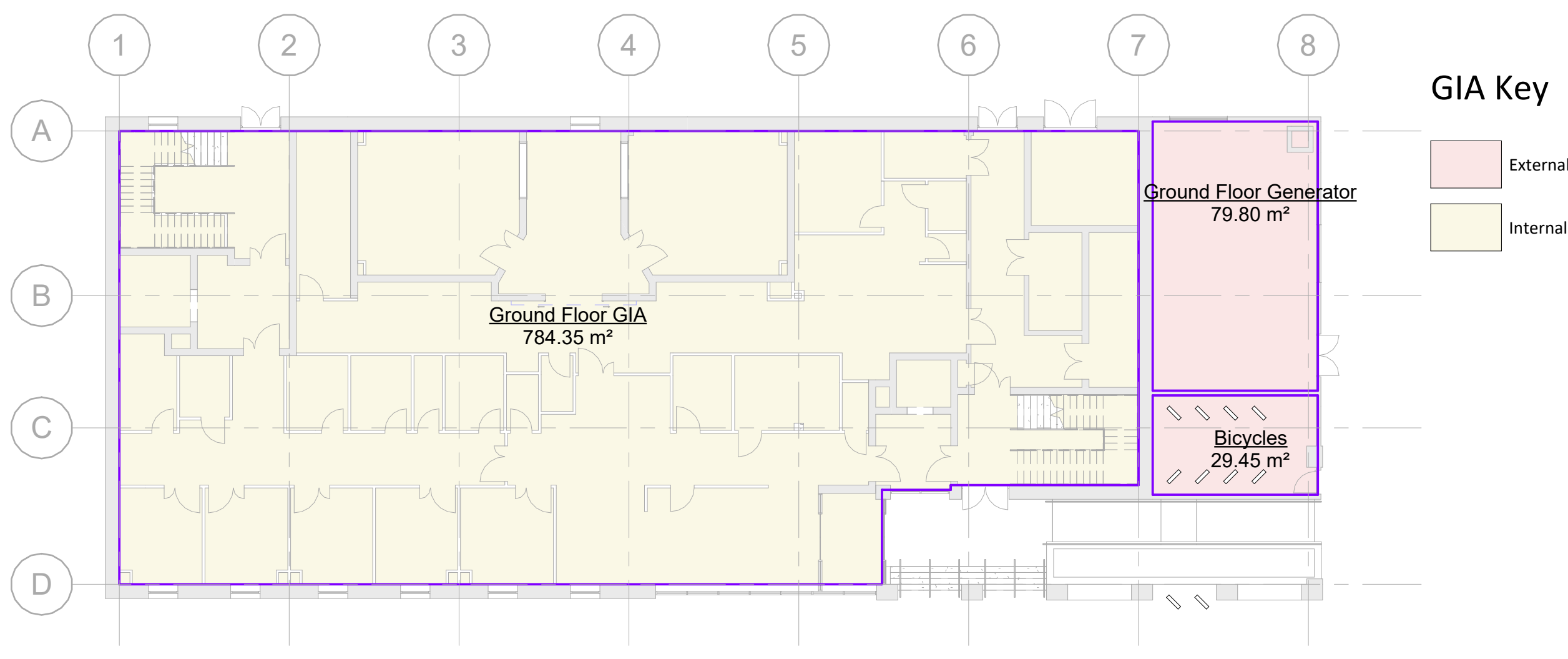
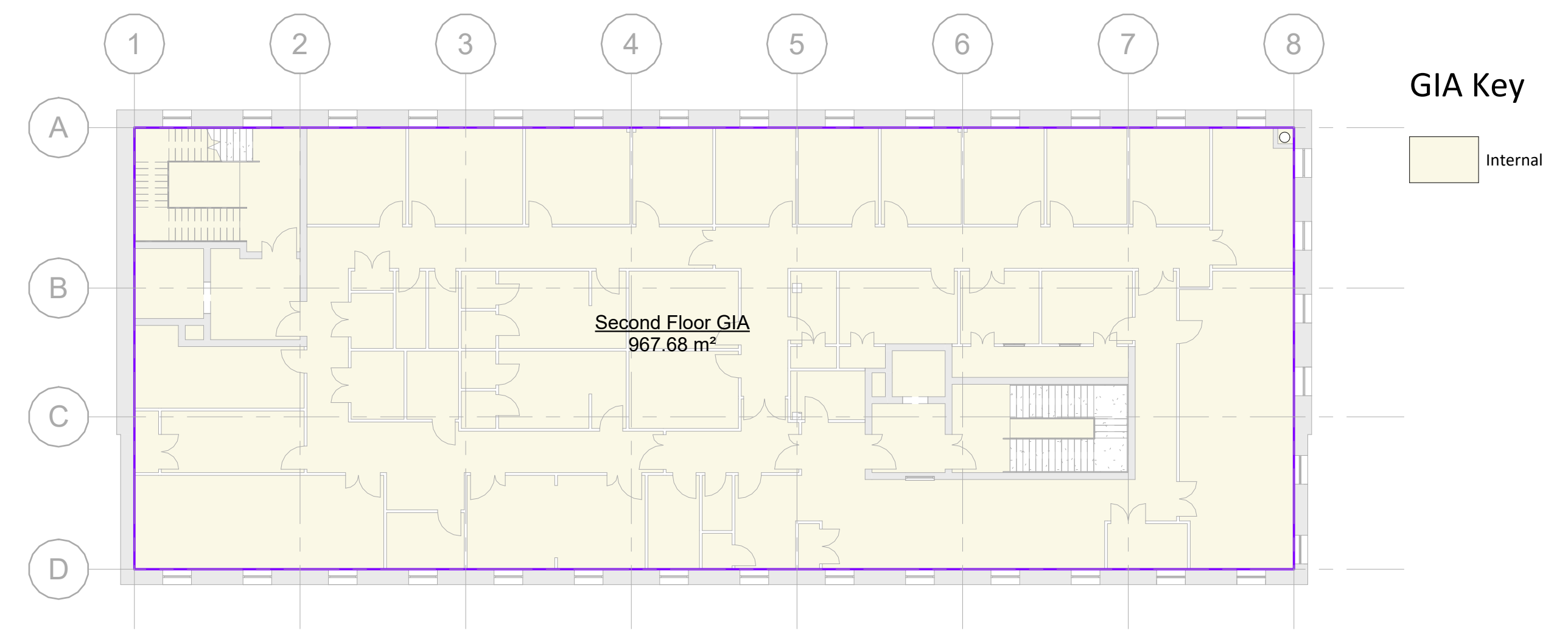


Contractors to check all dimensions on drawings.
 Any discrepancies must be reported to KTA Architects Ltd or the contract administrator before proceeding.
 Do not scale except for planning purposes, work to figured dimensions.
 A Fire Consultant must be appointed for this project. KTA drawings & schedules to be read in conjunction with the Fire Consultant Fire Strategy Report.
 The Fire Strategy Report takes precedence over any KTA drawing or schedule & any discrepancy should be brought to KTA's attention.
 This drawing must be read in conjunction with all relevant consultants drawings.
 This drawing is © KTA Architects Ltd.

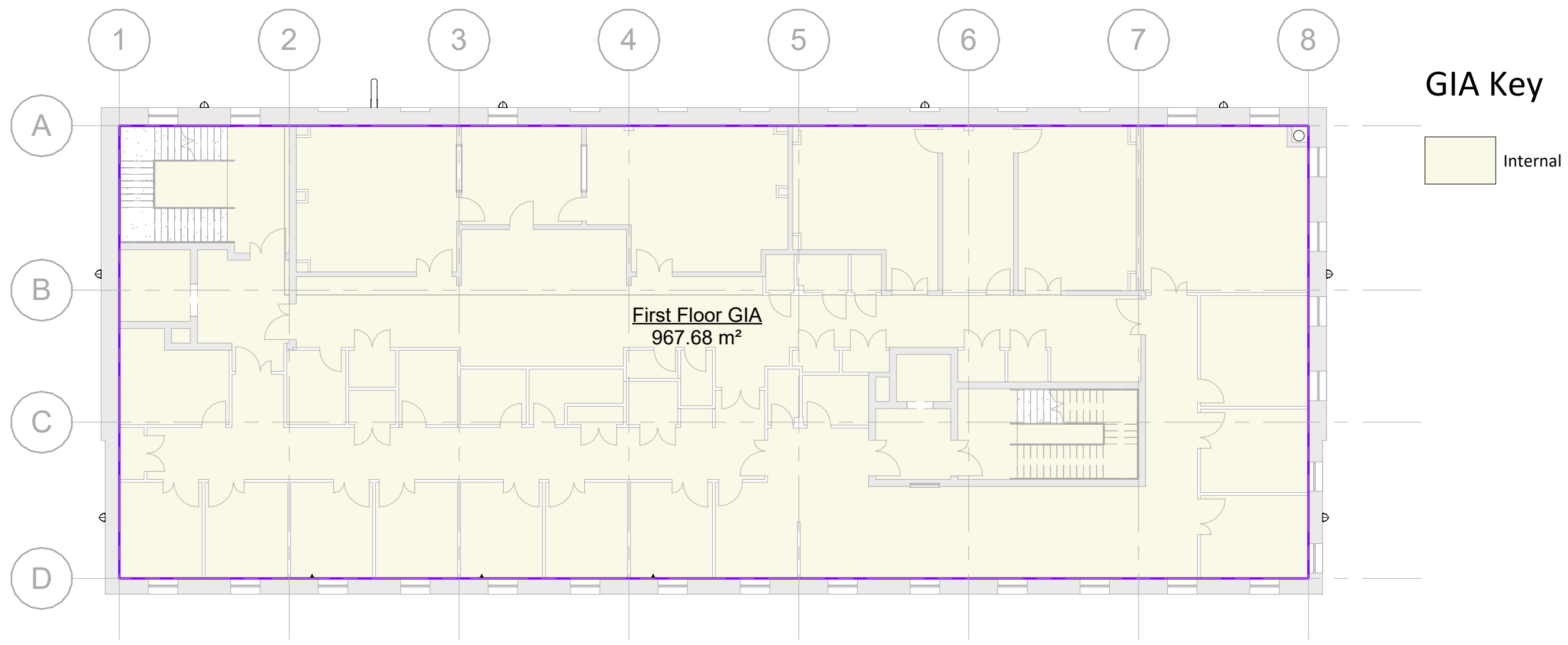
Revision Schedule			
Revision Number	Revision Date	Revision Description	Issued/ Authorised by
P4	14/12/2023	Issued for Planning application	AM
P3	16/10/2023	Issued to enable stage 3 coordination	AM
P2	07/08/2023	Second issue	AM/LF
P1	17/07/2023	Initial issue	AM/LF



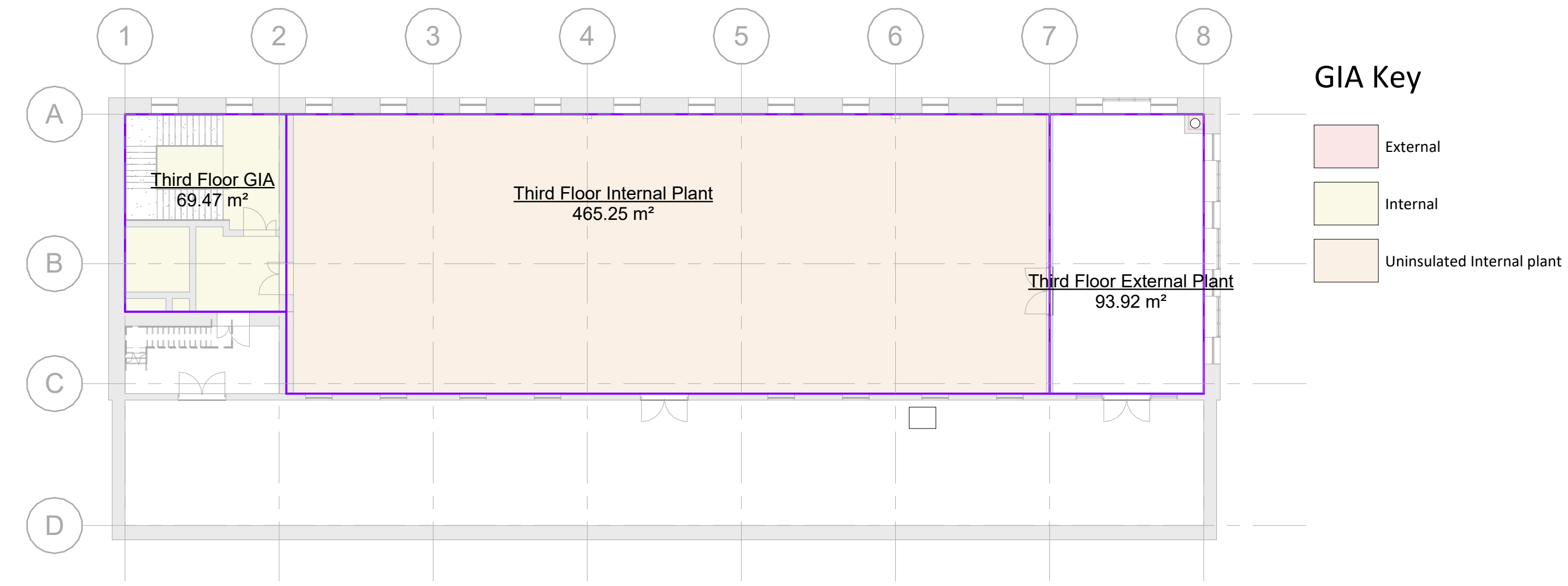
LEVEL GF
1 : 200



LEVEL 02
1 : 200



LEVEL 01
1 : 200



LEVEL 03
1 : 200

Area Schedule (Gross Building)	
Name	Area
External	
Bicycles	29.5 m ²
Ground Floor Generator	79.8 m ²
Third Floor External Plant	93.9 m ²
	203.2 m ²
Internal	
First Floor GIA	967.7 m ²
Ground Floor GIA	784.3 m ²
Second Floor GIA	967.7 m ²
Third Floor GIA	69.5 m ²
	2789.2 m ²
Uninsulated Internal plant	
Third Floor Internal Plant	465.2 m ²
	465.2 m ²
	3457.6 m ²



Winslade House, Winslade Park, Manor Drive,
 Clyst St. Mary, Exeter, EX5 1FY
 Tel: 01392 360338
 Email: kt@kta.uk.com
 Web: www.kta.uk.com

Project
Plymouth CDC
 Colin Campbell Court
 Market Ave,
 Plymouth, PL1 1TZ

Title
GIA Calculations

Author AM	Chkd by LF/AS	Scale 1 : 200	@ A1
Project 2258	Status PL Planning		
Drawing number 2258- KTA- XX- ZZ- D- A- 0601	Rev. P4		