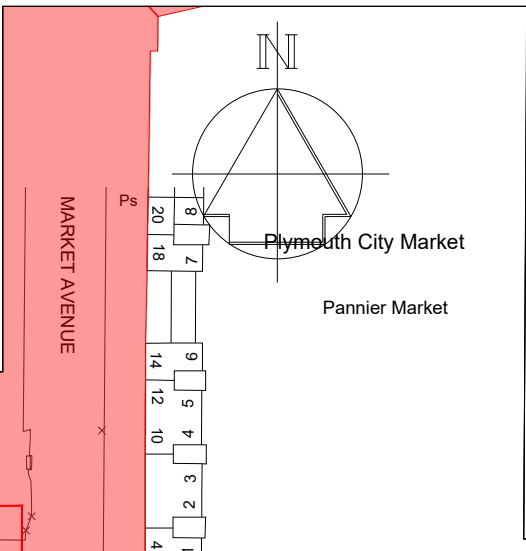


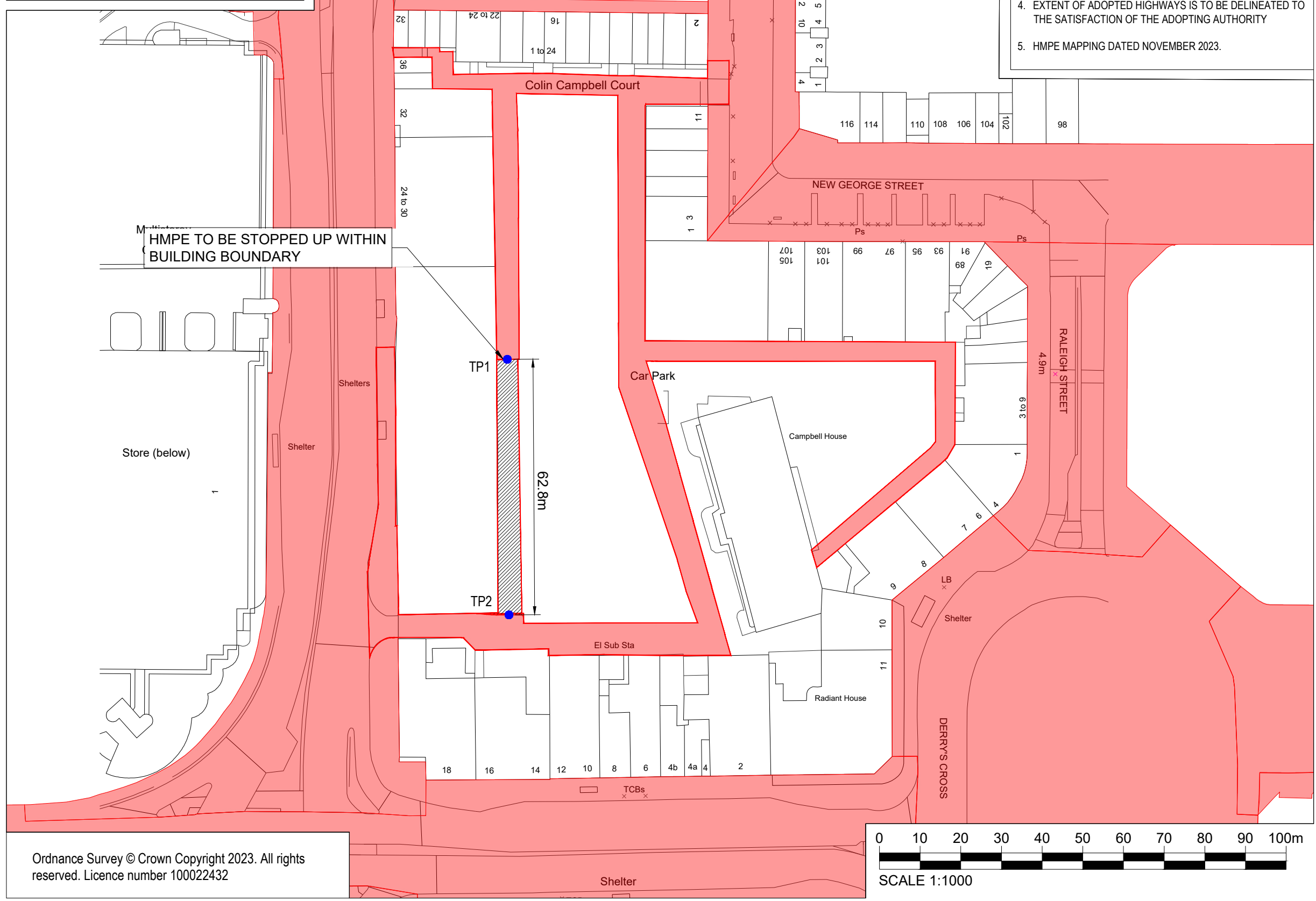
**KEY:**

- EXISTING HMPE
- EXISTING HMPE TO BE STOPPED UP
- TERMINAL POINTS

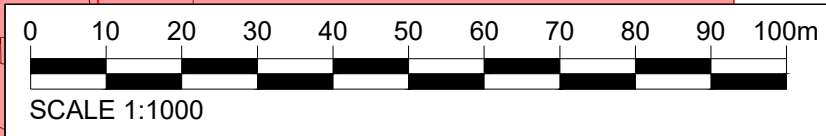
TERMINAL POINT LOCATIONS		
TERMINAL POINT	EASTINGS	NORTHING
TP1	247355	54545
TP2	247355	54482



- GENERAL NOTES**
- DO NOT SCALE FROM THIS DRAWING.
  - ALL DIMENSIONS, CO-ORDINATES AND LEVELS ARE GIVEN IN METRES UNLESS SHOWN OTHERWISE.
  - ROADS AND FOOTWAYS TO BE ADOPTED UNDER SECTION 38 OF HIGHWAYS ACT 1980 SHALL COMPLY WITH THE ADOPTING LOCAL AUTHORITY HIGHWAY DESIGN GUIDELINES FOR NEW DEVELOPMENTS AND BE IN ACCORDANCE WITH THE HIGHWAYS AGENCY DESIGN MANUAL FOR ROADS AND BRIDGES.
  - EXTENT OF ADOPTED HIGHWAYS IS TO BE DELINEATED TO THE SATISFACTION OF THE ADOPTING AUTHORITY
  - HMPE MAPPING DATED NOVEMBER 2023.



Ordnance Survey © Crown Copyright 2023. All rights reserved. Licence number 100022432



# AECOM

## PROJECT

### COLIN CAMPBELL COURT

## CLIENT

### University Hospital Plymouth NHS Trust

## CONSULTANT

AECOM  
 Plumer House, Third Floor  
 Plymouth, PL6 6DH  
 +44(0)1752 676700 tel  
 www.aecom.com

## DRAWING STATUS

### PRELIMINARY

## ISSUE/REVISION

NO	DATE	DESCRIPTION
P01	05/12/2023	FIRST ISSUE
I/R	DATE	DESCRIPTION

## PROJECT NUMBER

### 60665942

## SHEET TITLE

### STOPPING UP PLAN

## SHEET NUMBER

### 60691383-ACM-XX-XX-DR-C-2206 P01

This drawing has been prepared for the use of AECOM's client. It may not be used, modified, reproduced or relied upon by third parties, except as agreed by AECOM or as required by law. AECOM accepts no responsibility, and denies any liability whatsoever, to any party that uses, or relies on this drawing without AECOM's express written consent. Do not scale this document. All measurements must be obtained from the stated dimensions.