

SCALE BAR 1:50



WINDOW SCHEDULE - NO. 19 LEMON STREET		
Ref	Location	Description
W1	BM F	Horned timber sliding sash, 4 over 4, SG
W2	BM R	Crittall style metal frame SG window in timber sub-frame with casement & top hung opening, georgian wire glass
W3	GF F	Hornless timber sliding sash, 9 over 6 with 3 over 2 side panels either side, SG
W4	GF R	Hornless timber sliding sash, 6 over 6 with 2 over 2 side panels either side, SG
W5	GF R	Curved timber sliding sash (painted shut), 9 over 6, SG
W6	FF F	Hornless timber sliding sash, 9 over 6, SG
W7	FF F	Hornless timber sliding sash, 9 over 4, SG
W8	FF R	Horned timber sliding sash 6 over 6, SG
W9	FF R	Hornless timber sliding sash, 8 over 8, SG
W10	FF R	C20 timber top hung opening casement, SG
W11	FF R	C20 timber bottom hung (inward) opening casement, SG
W12	SF F	C20 timber casement opening, SG
W13	SF F	C20 timber casement opening, SG
W14	SF R	C20 Horned timber sliding sash, 1 over 1, SG
W15	SF R	C20 Horned timber sliding sash, 1 over 1, SG

EXISTING FINISHES

Roof - Natural Slate with clay ridge tiles
 Chimneys - brick built & rendered with terracotta pots (where fitted)
 Fascia - timber, painted black
 Rainwater Goods - Ogee deep-flow black uPVC gutters and round rwdps
 SF Walls - Rendered and painted
 FF & GF Walls - vertical slate hanging
 Basement Walls - Rendered and painted
 SF Windows - C20 timber sliding sash, SG, painted white
 FF Windows - timber sliding sash & C20 casement opening, all SG, painted
 GF Windows - timber sliding sash, SG, painted
 Basement Window - Crittall metal frame in timber sub-frame, opening casements and SG georgian wire, painted
 Door - timber 2 panel, SG, painted
 SVP / foul water goods - round metal, painted black

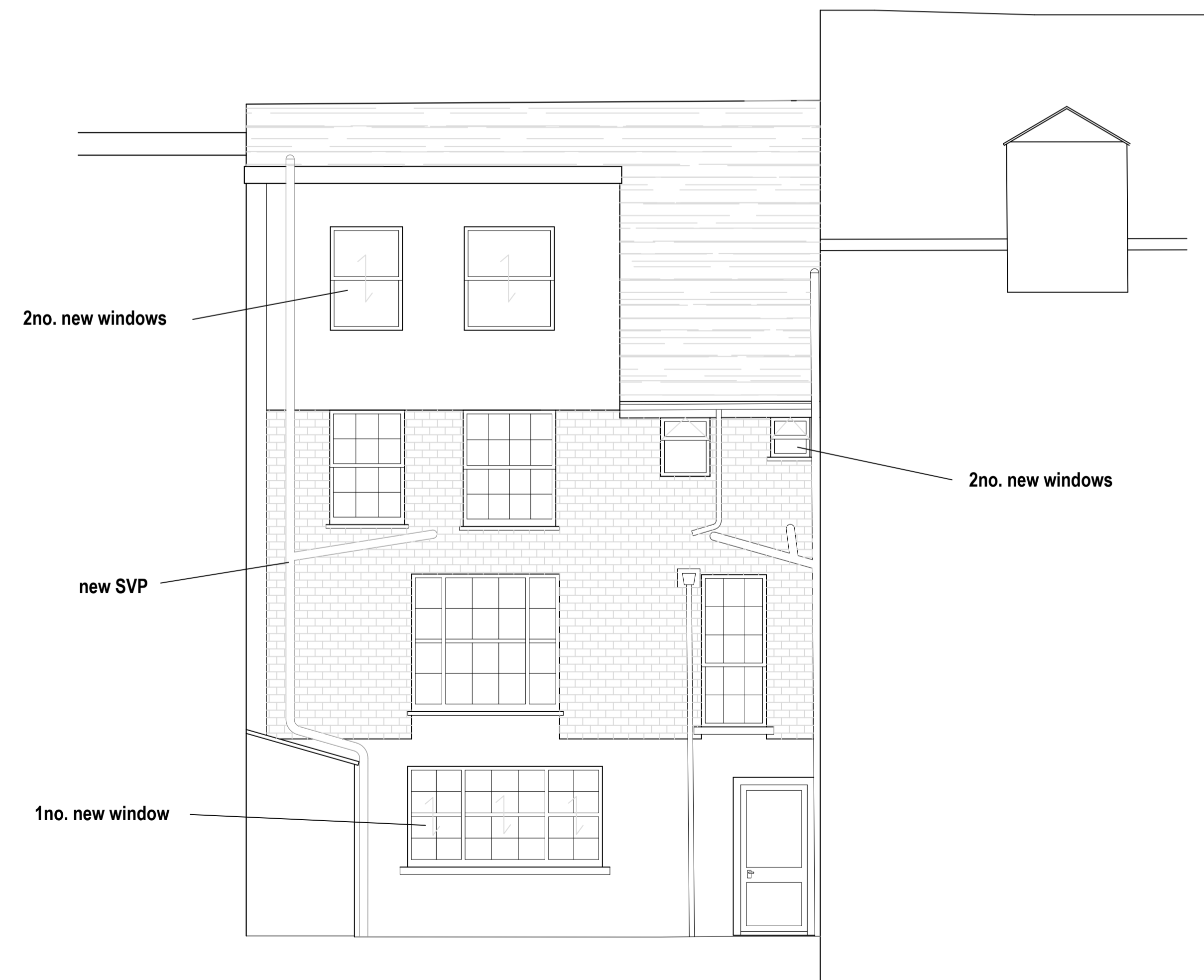
PROPOSED FINISHES

Roof - no change to existing
 Chimneys - no change to existing
 Fascia - no change to existing
 Rainwater Goods - no change to existing
 SF Walls - no change to existing
 FF & GF Walls - no change to existing
 Basement Walls - no change to existing
 SF Windows - new timber slimlite DG 1 over 1, painted white
 FF Windows - 2no. new timber casements, slimlite DG, painted white
 GF Windows - timber sliding sash, SG, painted
 Basement Window - new timber slimlite DG, painted white
 Door - no change to existing
 SVP / foul water goods - existing metal retained, new uPVC black SVP

EXISTING REAR (SOUTH WEST) ELEVATION 1:50



PROPOSED REAR (SOUTH WEST) ELEVATION 1:50



REVISIONS

No.	Description	Date	Signed
0	Original - For Planning & LBC	03.10.23	JD

Client: Mr J Clark
Title: 19 Lemon Street
 Truro
 Cornwall
 TR1 2LS

Drawing: Rear Elevation

Surveyed: jdl/ict Drawn: jdl/ict Approved: smt
 Date: 2023.06.26 Scale: 1:50 Sheet: No 1

Drawing No: SMT 2138/207

SMT ASSOCIATES
 Chartered Building Surveyors
 &
 Historic Building Consultants
 01872 260798