

Urban Greening Factor Calculator

Surface Cover Type	Factor	Area (m2)	Contribution	Notes
Semi-natural vegetation (e.g. trees, woodland, species-rich grassland) maintained or established on site.	1	468	468	Proposed areas of native tree planting
Standard trees planted in pits with soil volumes less than two thirds of the projected canopy area of the mature tree.	0.6	2849.9	1709.9	Extra Heavy Trees and Multi Stem Trees specified
Hedges (line of mature shrubs one or two shrubs wide)	0.6	243.9	146.3	Native Hedge
Groundcover planting	0.5	1011.0	505.5	Ornamental Shrub Planting
Total contribution			2829.77	
Total site area (m2)			8451	
Urban Greening Factor			0.34	



Notes:

- Do not scale from this drawing. All dimensions are in metres, unless stated otherwise.
- This drawing is based on the Architect's layout by Mountford Pigott, 2410-F15, June 2023.
- Ordnance Survey, (c) Crown Copyright 2020. All rights reserved. Licence number 100022432.
- Drawing to be read in conjunction with all other drawings. Any discrepancies are to be reported to the landscape architect working days in advance of undertaking any work.

Key:

- Site Boundary
- CPO Boundary
- Existing vegetation
- Proposed Tree Planting
Type: HS & EHS
Fixing: Wooden Stake with Expandable Tree Tie
- Proposed Native Hedge Planting
Total - 161.58 lin m
Double staggered row @ 7 / lin m
Topsoil depth 450mm
- Proposed Ornamental Shrub Planting
Total - 1011.00m2
Topsoil depth 450mm
- Proposed Native Shrub Planting
Total - 468.00m2
Topsoil depth 450mm

Rev	Date	Details	By	Chkd
P05	23.12.08	UGF calculations revised	JN	NH
P04	23.11.23	Benches omitted from the plan	JN	NH
P03	20.11.23	Revised layout based on client's comments	RC	NH
P02	05.10.23	Removed parking bays	DC	NH
P01	26.09.23	Issued for comment	DC	NH

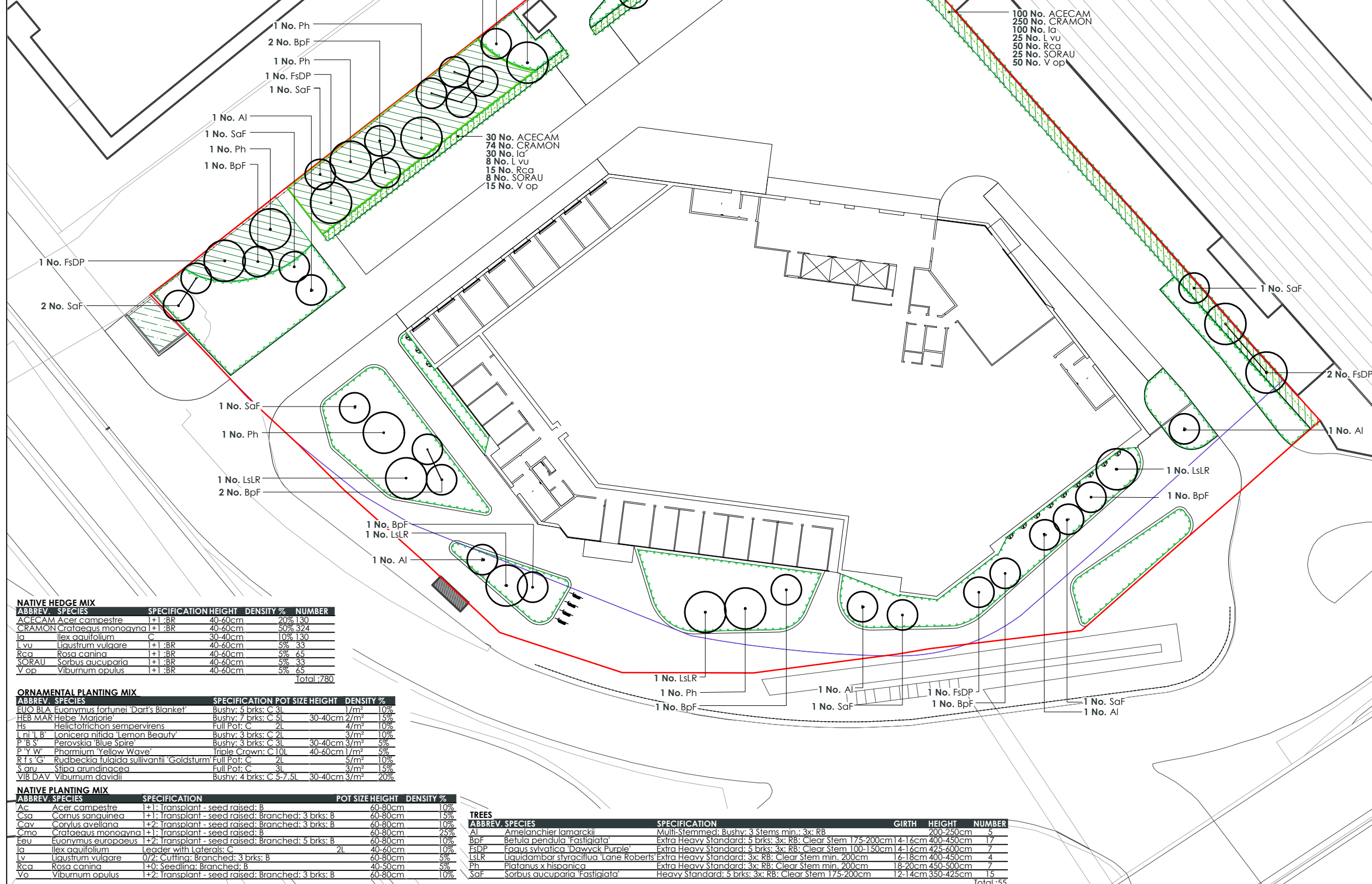


CLIENT: **Big Yellow Storage**

PROJECT: **Staples Corner**

TITLE: **Detailed Planting Strategy**

SCALE @ A3:	DATE:	DRAWN:	CHECKED:	APPROVED:
1:500	SEPT 23	DC	NH	-
STATUS: COMMENT				
DRAWING NO: 220877-RAP-XX-XX-DR-L-4001				REVISION: P05



NATIVE HEDGE MIX

ABBREV.	SPECIES	SPECIFICATION	HEIGHT	DENSITY %	NUMBER
ACECAM	Acer campestre	1+1; BR	40-60cm	20%	130
CRAMON	Crataegus monogyna	1+1; BR	40-60cm	50%	324
la	Ilex aquifolium	C	30-40cm	10%	130
Lvu	Ligustrum vulgare	1+1; BR	40-60cm	5%	33
Rca	Rosa canina	1+1; BR	40-60cm	5%	65
SORAU	Sorbus aucuparia	1+1; BR	40-60cm	5%	33
Vop	Viburnum opulus	1+1; BR	40-60cm	5%	65
					Total: 780

ORNAMENTAL PLANTING MIX

ABBREV.	SPECIES	SPECIFICATION	POT SIZE	HEIGHT	DENSITY %
BLO	Buxus sempervirens 'Dart's Blanket'	Bushy; 5 brks; C 3L	1	10%	
HEB	Hebe 'Marjorie'	Bushy; 7 brks; C 5L	30-40cm	2/m ²	15%
HS	Helictotrichon sempervirens	Full Pot; C 2L	4	10%	
Lni	Lonicera nitida 'Lemon Beauty'	Bushy; 3 brks; C 2L	3	10%	
P'B'S	Perovskia Blue Spire	Bushy; 3 brks; C 3L	30-40cm	3/m ²	5%
P'Y'W	Phormium 'Yellow Wave'	Triple Crown; C 10L	40-60cm	1/m ²	5%
Rf's	Rudbeckia fulgida sullivanii 'Goldsturm'	Full Pot; C 2L	5	10%	
S.aru	Stipa arundinacea	Full Pot; C 3L	3	15%	
VIB DAV	Viburnum davidii	Bushy; 4 brks; C 5-7; 5L	30-40cm	3/m ²	20%

NATIVE PLANTING MIX

ABBREV.	SPECIES	SPECIFICATION	POT SIZE	HEIGHT	DENSITY %
Ac	Acer campestre	1+1; Transplant - seed raised; B		60-80cm	10%
Csa	Cornus sanguinea	1+1; Transplant - seed raised; Branched; 3 brks; B		60-80cm	15%
Cav	Corylus avellana	1+2; Transplant - seed raised; Branched; 3 brks; B		60-80cm	10%
Cmo	Crataegus monogyna	1+1; Transplant - seed raised; B		60-80cm	25%
Eeu	Euonymus europaeus	1+2; Transplant - seed raised; Branched; 5 brks; B		60-80cm	10%
la	Ilex aquifolium	Leader with laterals; C	2L	40-60cm	10%
Lv	Ligustrum vulgare	0/2; Cutting; Branched; 3 brks; B		60-80cm	5%
Rca	Rosa canina	1+0; Seedling; Branched; B		40-50cm	5%
Vo	Viburnum opulus	1+2; Transplant - seed raised; Branched; 3 brks; B		60-80cm	10%

TREES

ABBREV.	SPECIES	SPECIFICATION	GIRTH	HEIGHT	NUMBER
Al	Amelanchier lamarckii	Multi-Stemmed; Bushy; 3 Stems min.; 3x; RB		200-250cm	5
BpF	Betula pendula 'Fastigiata'	Extra Heavy Standard; 5 brks; 3x; RB; Clear Stem 175-200cm	4-16cm	400-450cm	17
FsDP	Fagus sylvatica 'Dawson's Purple'	Extra Heavy Standard; 5 brks; 3x; RB; Clear Stem 100-150cm	4-16cm	425-600cm	7
LsLR	Liquidambar styraciflua 'Lane Roberts'	Extra Heavy Standard; 3x; RB; Clear Stem min. 200cm	16-18cm	400-450cm	4
Ph	Platanus x hispanica	Extra Heavy Standard; 3x; RB; Clear Stem min. 200cm	18-20cm	450-500cm	7
SaF	Sorbus aucuparia 'Fastigiata'	Heavy Standard; 5 brks; 3x; RB; Clear Stem 175-200cm	12-14cm	350-425cm	15
					Total: 55