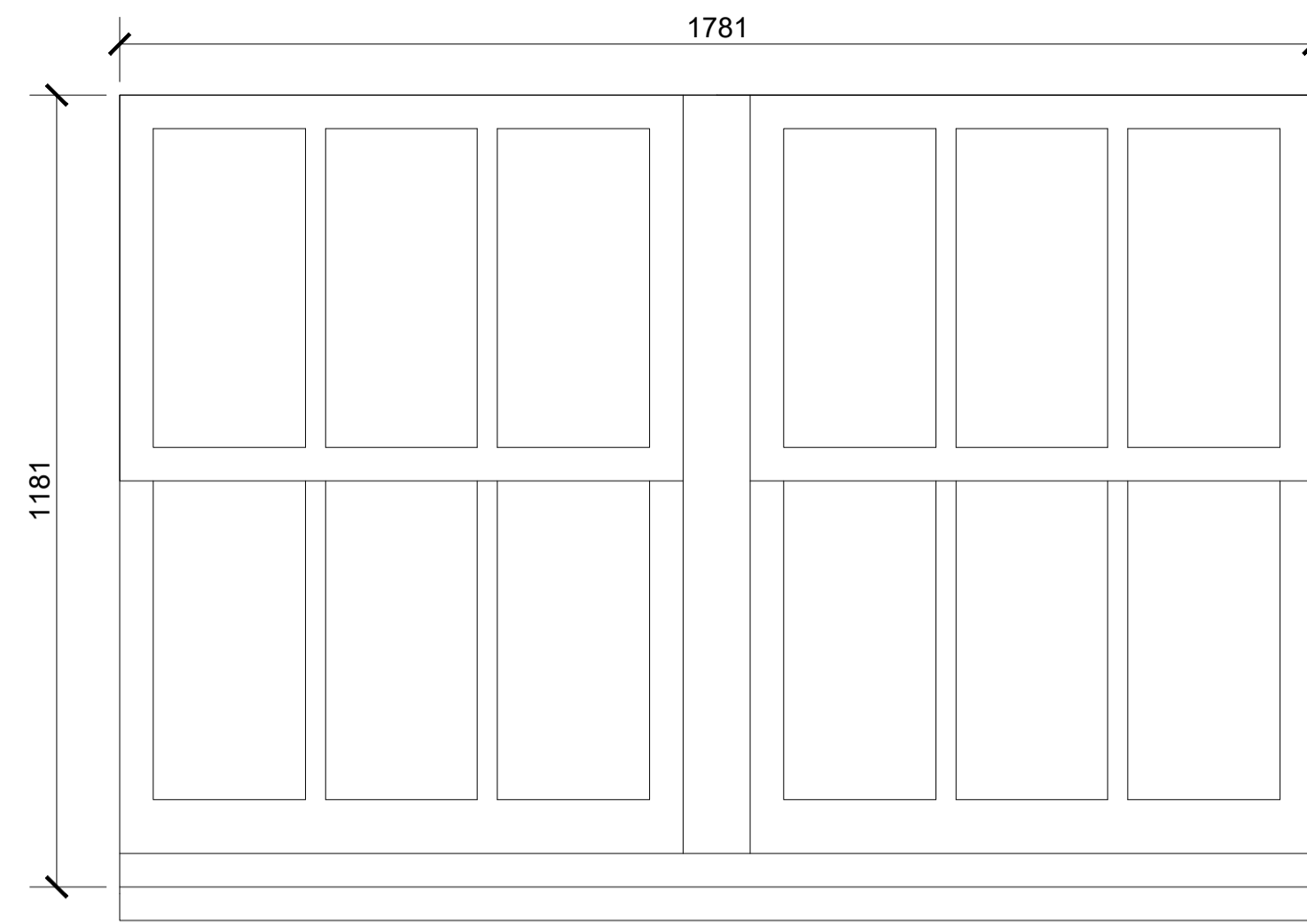


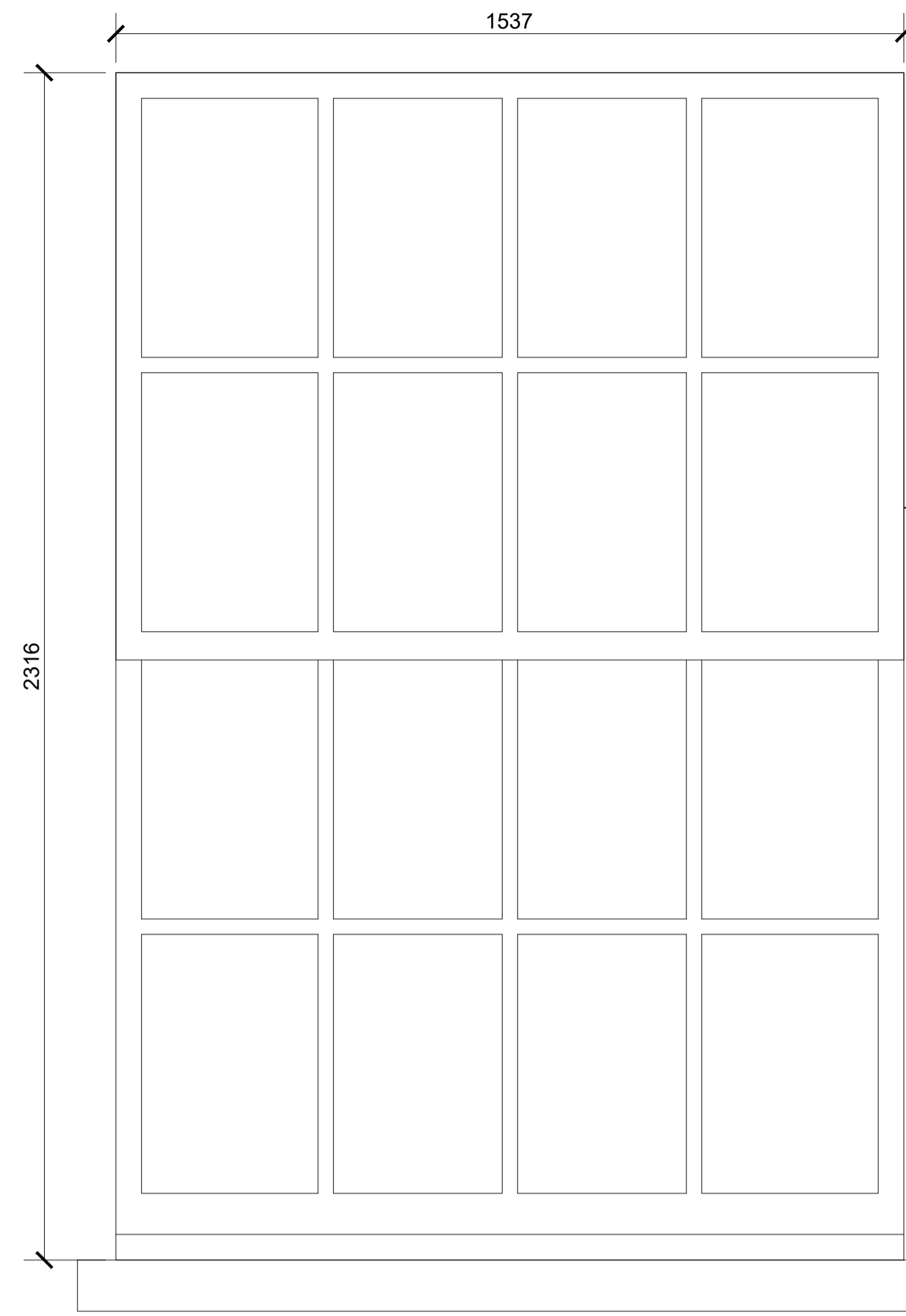
W2 BASEMENT REAR

REMOVE UPVC WINDOW & INSTALL NEW TIMBER SASH WINDOW PAINTED (COLOUR - WHITE)



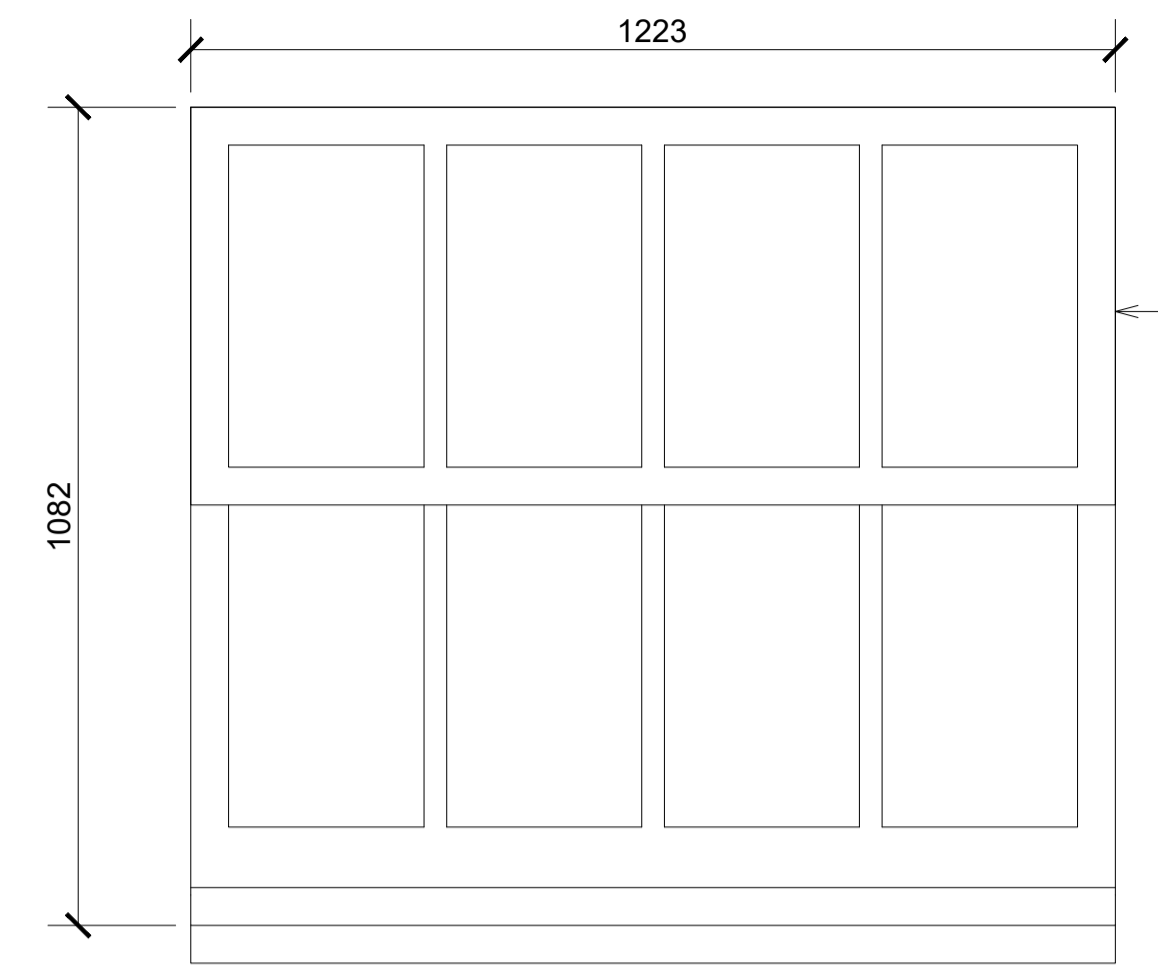
W3 BASEMENT REAR

REMOVE UPVC WINDOW & INSTALL NEW TIMBER SASH WINDOW PAINTED (COLOUR - WHITE)



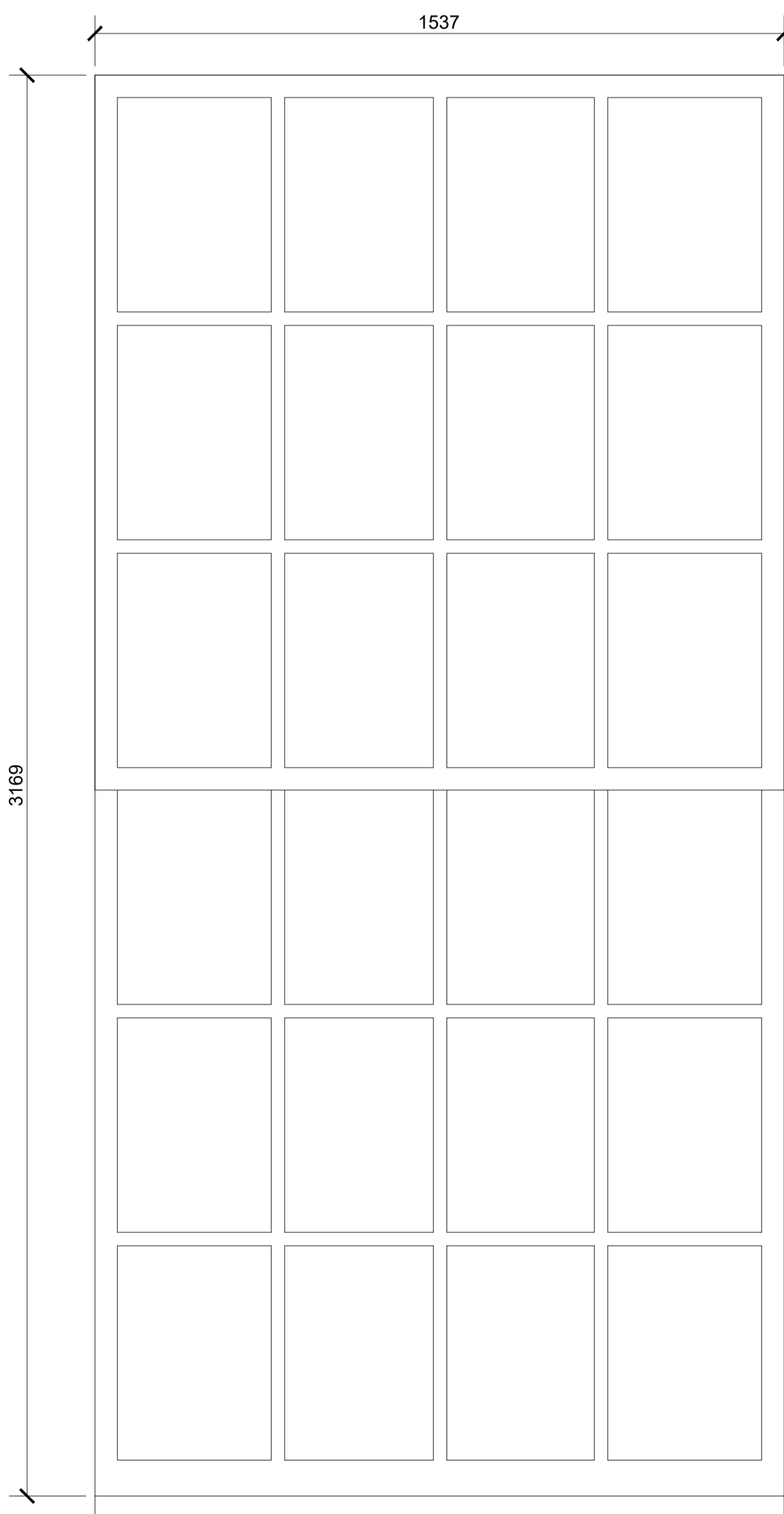
W4 GROUND FLOOR REAR

REMOVE UPVC WINDOW & INSTALL NEW TIMBER SASH WINDOW PAINTED (COLOUR - WHITE)



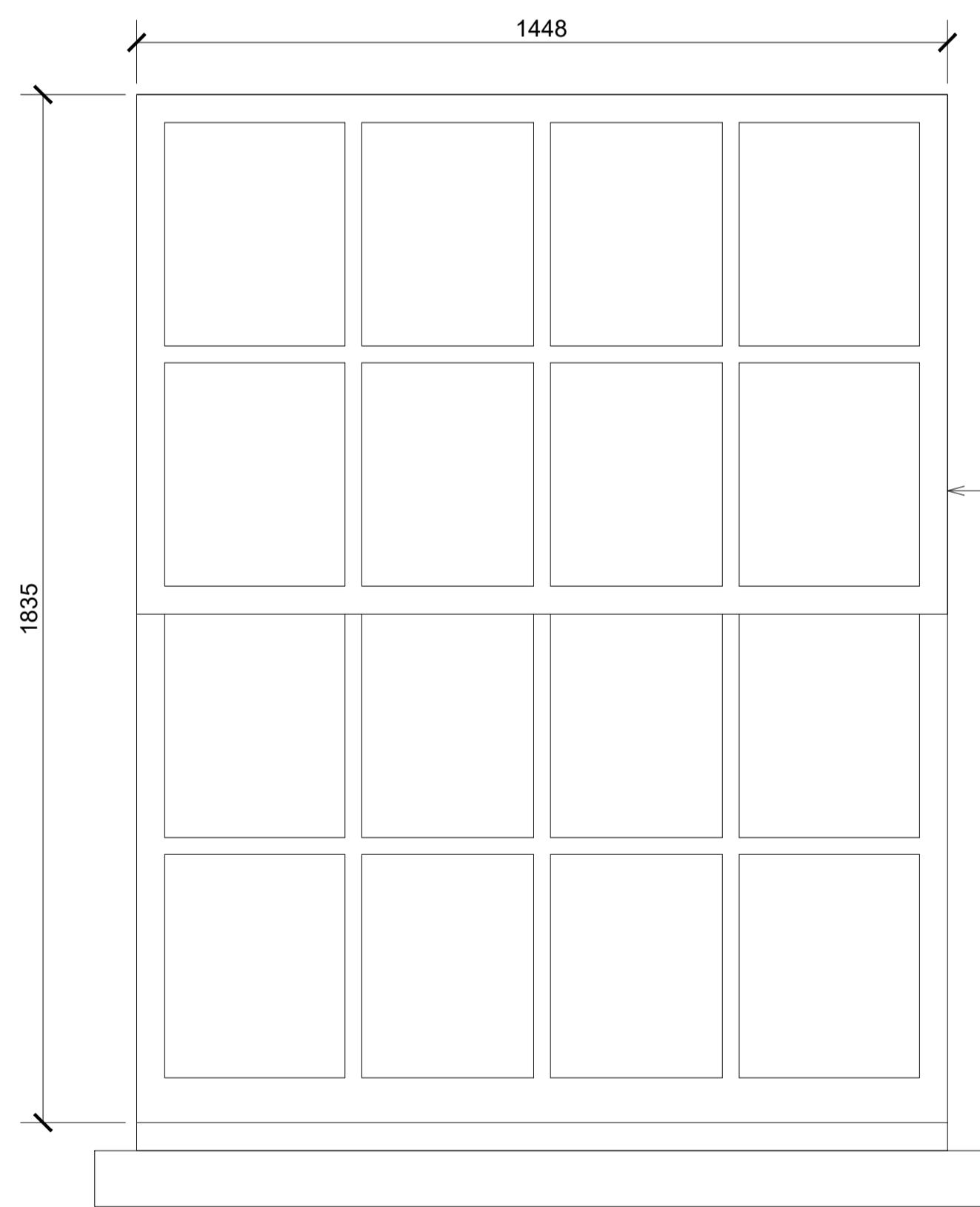
W5 & W6 GROUND FLOOR REAR

REMOVE UPVC WINDOW & INSTALL NEW TIMBER SASH WINDOW PAINTED (COLOUR - WHITE)



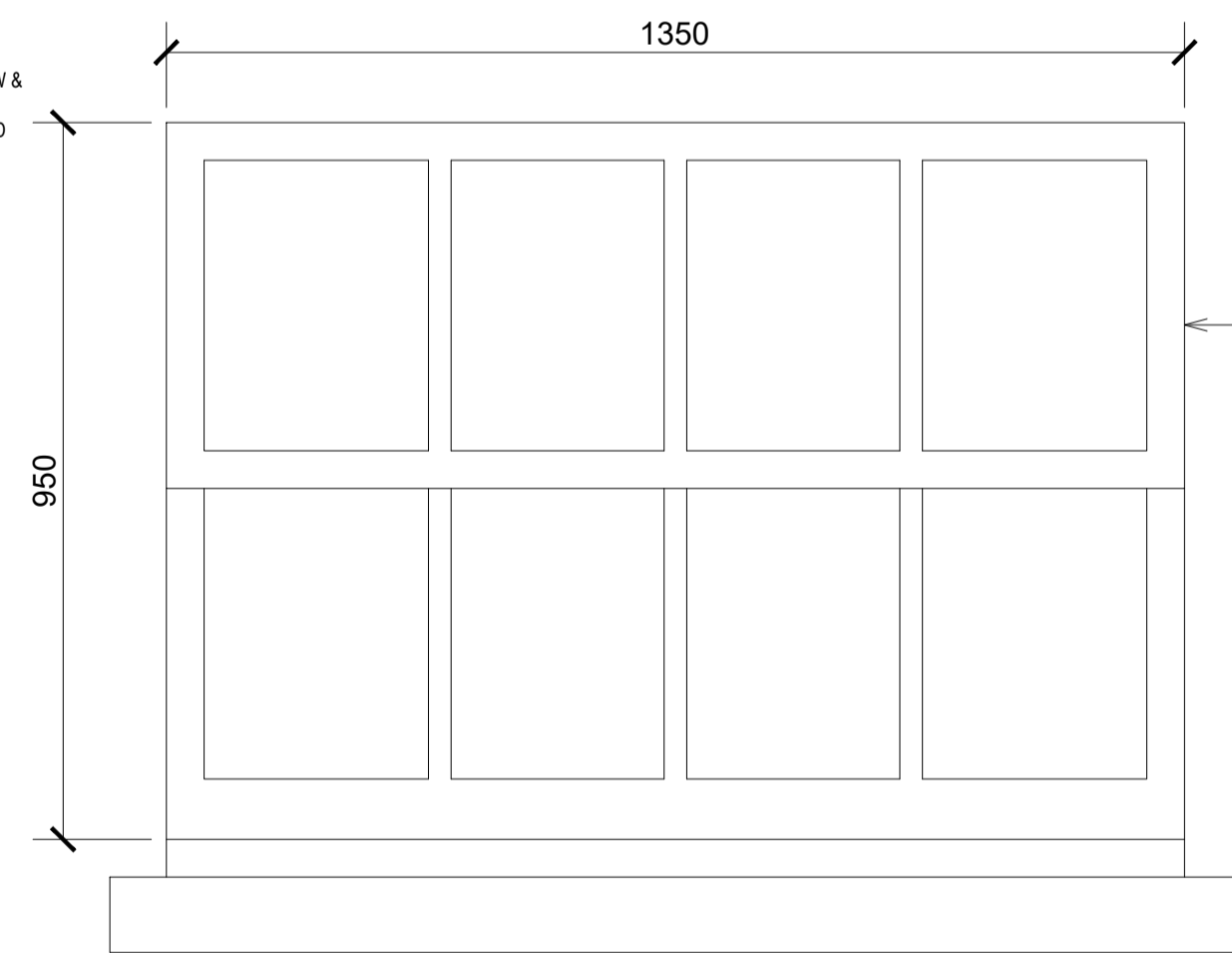
W7 FIRST FLOOR REAR

REMOVE UPVC WINDOW & INSTALL NEW TIMBER SASH WINDOW PAINTED (COLOUR - WHITE)



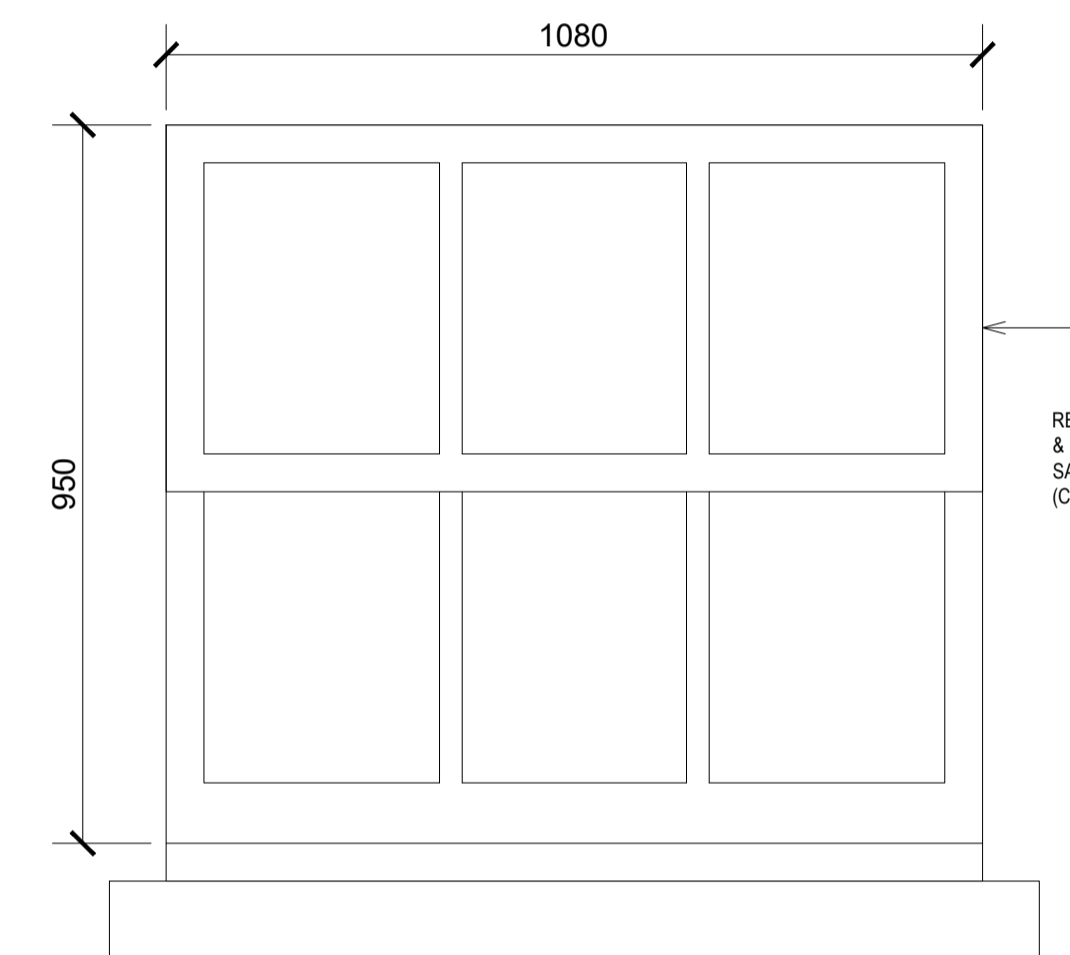
W9 SECOND FLOOR REAR

REMOVE UPVC WINDOW & INSTALL NEW TIMBER SASH WINDOW PAINTED (COLOUR - WHITE)



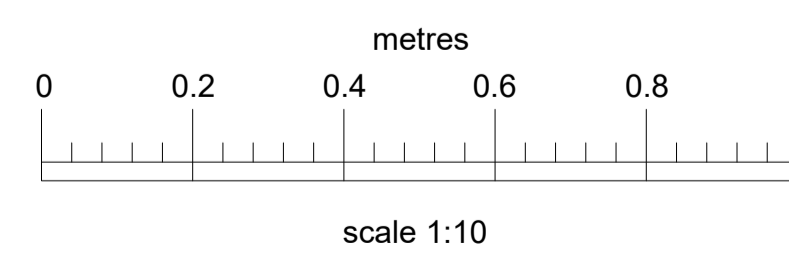
W11 THIRD FLOOR REAR

REMOVE UPVC WINDOW & INSTALL NEW TIMBER SASH WINDOW PAINTED (COLOUR - WHITE)



W12 THIRD FLOOR REAR

REMOVE UPVC WINDOW & INSTALL NEW TIMBER SASH WINDOW PAINTED (COLOUR - WHITE)



This drawing is the copyright of Get Planning & Architecture Ltd. and may not be reproduced without permission. Dimensions must not be scaled (except for planning purposes) and must be checked prior to construction and manufacture.

-	drawn		pa	pa	
REV	details	check	by	cad	date

revisions:

project: CONDITION 4 APPLICATION		Get Planning & Architecture 7 Tudor Court, Brighton Road Sutton, Surrey SM2 5AE tel. 0208 770 3962 www.get-planning.co.uk email: info@get-planning.co.uk				
site: 8 CRAVEN HILL LONDON W2 3DS						
drawing: ELEVATIONS OF WINDOWS AS PROPOSED SHEET 1 of 2		scale: 1:10 @ A1	date: 21/09/2023	project no: 12657	drawing no: 23	rev: