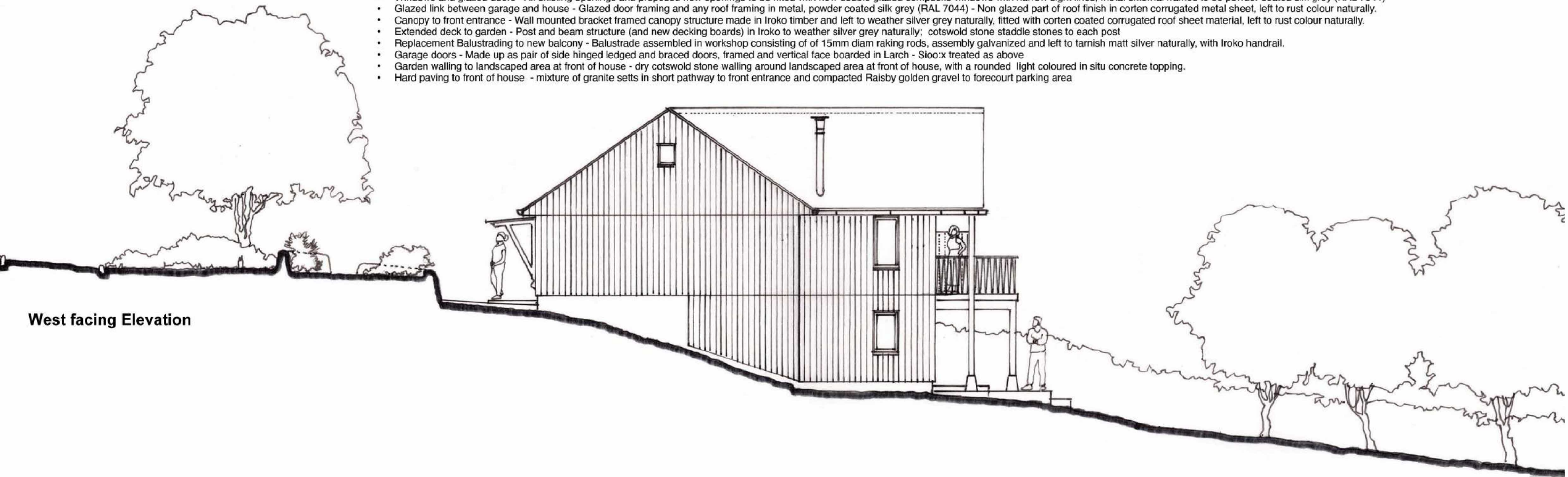


South facing Elevation

**Materials List**

- Wall cladding - Vertical larch boarding with Sioo:x treatment which will advance weathering process to a light warm silver colour
- Roof - Existing weathered pantiles will be stripped for strengthening of roof structure , then existing tiles replaced. Photovoltaic solar array panels to be fitted to part of south facing roof.
- Windows and glazed doors - All existing openings and proposed new openings to be fitted with new double glazed composite windows with narrow sight lines; metal external frames to be powder coated silk grey (RAL 7044)
- Glazed link between garage and house - Glazed door framing and any roof framing in metal, powder coated silk grey (RAL 7044) - Non glazed part of roof finish in corten corrugated metal sheet, left to rust colour naturally.
- Canopy to front entrance - Wall mounted bracket framed canopy structure made in Iroko timber and left to weather silver grey naturally, fitted with corten coated corrugated roof sheet material, left to rust colour naturally.
- Extended deck to garden - Post and beam structure (and new decking boards) in Iroko to weather silver grey naturally; cotswold stone staddle stones to each post
- Replacement Balustrading to new balcony - Balustrade assembled in workshop consisting of of 15mm diam raking rods, assembly galvanized and left to tarnish matt silver naturally, with Iroko handrail.
- Garage doors - Made up as pair of side hinged ledged and braced doors, framed and vertical face boarded in Larch - Sioo:x treated as above
- Garden walling to landscaped area at front of house - dry cotswold stone walling around landscaped area at front of house, with a rounded light coloured in situ concrete topping.
- Hard paving to front of house - mixture of granite setts in short pathway to front entrance and compacted Raisby golden gravel to forecourt parking area



West facing Elevation