

Revision Notes

P1 23.11.27 Issued For Planning

CDM Regulations 2015  
Significant and non-obvious risks deemed 'difficult to manage' are identified on this drawing. Refer also to the risk register.

DRAWING NOTES

- NOTE 1: This document is the copyright of Charlie Luxton Design
- NOTE 2: This document must not be altered, reproduced or distributed without prior written consent
- NOTE 3: This document must not be altered. Charlie Luxton Design accepts no responsibility for any discrepancies resulting from alterations made by others.
- NOTE 4: Any discrepancies must be reported to Charlie Luxton Design.
- NOTE 5: Do not scale from this document. Used figure dimensions only.
- NOTE 6: All dimensions must be checked on site prior to commencement of related works
- NOTE 7: This document must be read in conjunction with all supporting documents by Charlie Luxton Design / other project consultants.
- NOTE 8: All elements designed by project consultants (i.e. structures, civils etc.) are indicative. Check source information and revision numbers prior to commencing work on packages
- NOTE 9: Charlie Luxton Design accepts no responsibility for the accuracy of background information produced by third parties.
- NOTE 10: The document status 'For Construction' alone permits commencement of construction. Drawings issued for 'Information' or 'Preliminary' are for reference purposes only.
- NOTE 11: Door and windows manufacturer to produce shop drawings for comment before manufacture. Glass specification is the responsibility of the manufacturer
- NOTE 12: All proposals are subject to statutory approvals.

Charlie Luxton Design  
Black Barn Studio  
Swerford Road  
Hook Norton  
OX15 5JR

info@charlieluxton.com  
01608 730086

324\_Courtyard Cottage

64A Acre End Street  
Eynsham  
OX29 4PD

Drawing Title  
Existing Sections

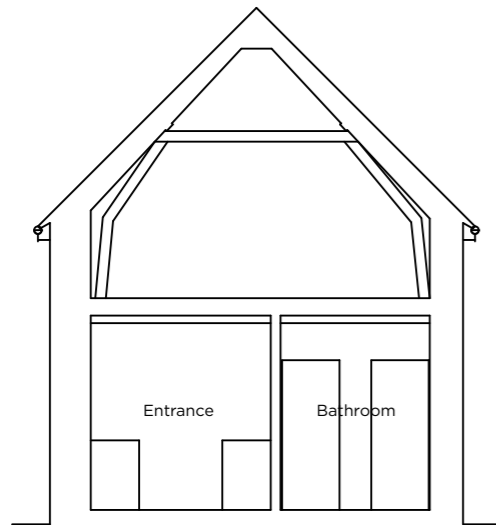
Project Stage  
STAGE 3

Scale  
1:100 @ A3

Sheet No. Rev.  
324\_04\_200 P1

Date  
27/11/2023

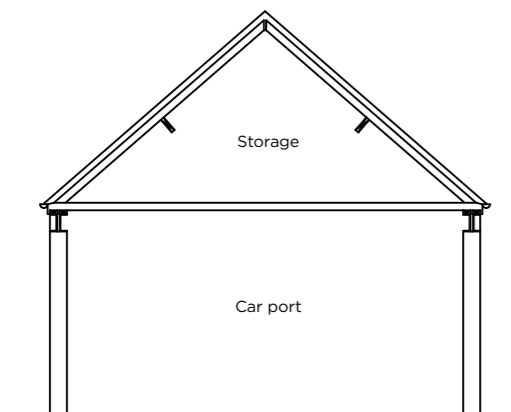
Charlie Luxton Design



01 Existing Cottage Section A-A  
1:100



02 Existing Cottage Section B-B  
1:100



03 Existing Carport Section C-C  
1:100

