

Revision Notes

P1 23.11.27 Issued For Planning

CDM Regulations 2015
Significant and non-obvious risks deemed 'difficult to manage' are identified on this drawing. Refer also to the risk register.

DRAWING NOTES

- NOTE 1: This document is the copyright of Charlie Luxton Design
- NOTE 2: This document must not be altered, reproduced or distributed without prior written consent
- NOTE 3: This document must not be altered. Charlie Luxton Design accepts no responsibility for any discrepancies resulting from alterations made by others.
- NOTE 4: Any discrepancies must be reported to Charlie Luxton Design.
- NOTE 5: Do not scale from this document. Used figure dimensions only.
- NOTE 6: All dimensions must be checked on site prior to commencement of related works
- NOTE 7: This document must be read in conjunction with all supporting documents by Charlie Luxton Design / other project consultants.
- NOTE 8: All elements designed by project consultants (i.e. structures, civils etc.) are indicative. Check source information and revision numbers prior to commencing work on packages
- NOTE 9: Charlie Luxton Design accepts no responsibility for the accuracy of background information produced by third parties.
- NOTE 10: The document status 'For Construction' alone permits commencement of construction. Drawings issued for 'Information' or 'Preliminary' are for reference purposes only.
- NOTE 11: Door and windows manufacturer to produce shop drawings for comment before manufacture. Glass specification is the responsibility of the manufacturer
- NOTE 12: All proposals are subject to statutory approvals.

Charlie Luxton Design
Black Barn Studio
Swerford Road
Hook Norton
OX15 5JR

info@charlieluxton.com
01608 730086

324_Courtyard Cottage

64A Acre End Street
Eynsham
OX29 4PD

Drawing Title
Existing Elevations Sheet 1 of 2

Project Stage
STAGE 3

Scale
1:100 @ A3

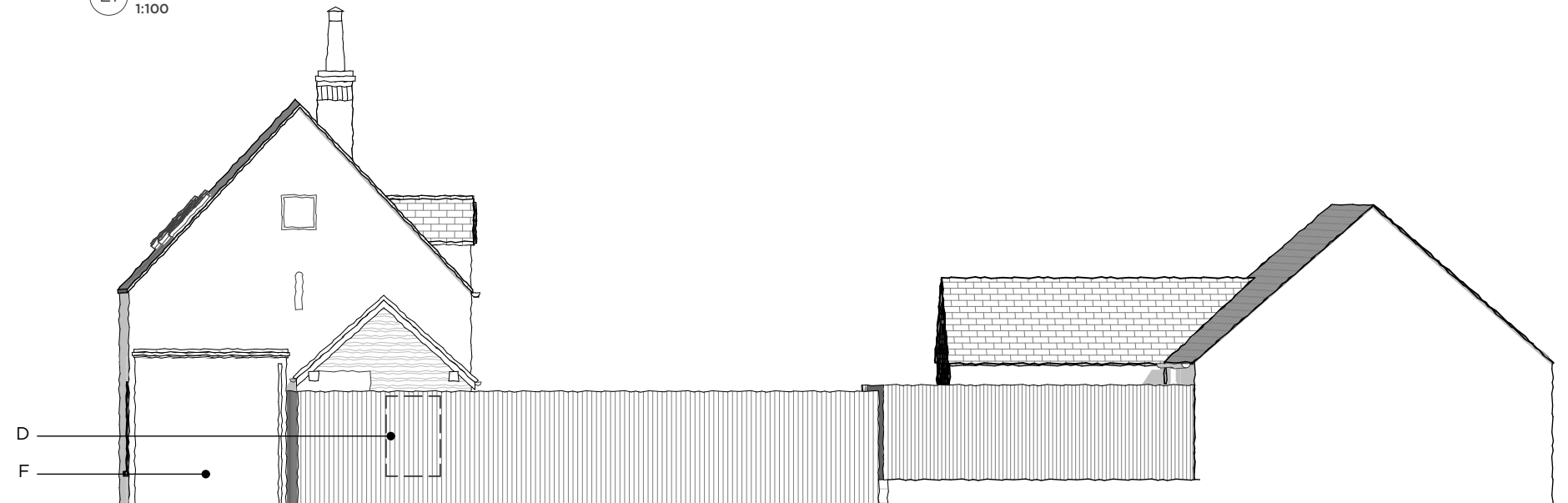
Sheet No. Rev.
324_05_200 P1

Date
27/11/2023

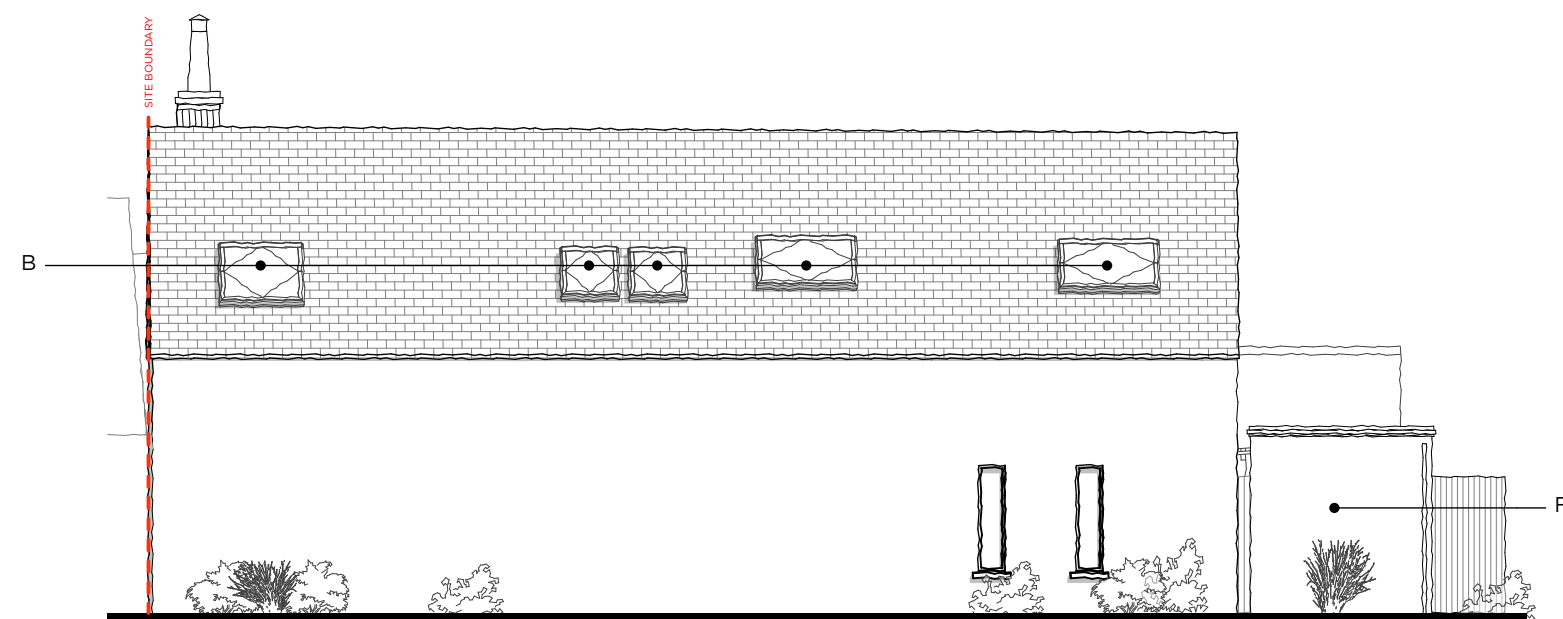
Charlie Luxton Design



E1 Existing West Elevation
1:100



E2 Existing North Elevation
1:100



E3 Existing East Elevation
1:100

- A Cementitious tiles
- B Triple glazed rooflight
- C Double glazed painted timber framed windows
- D Single glazed painted timber framed windows
- E Existing boundary timber fence
- F Neighbours outbuilding

