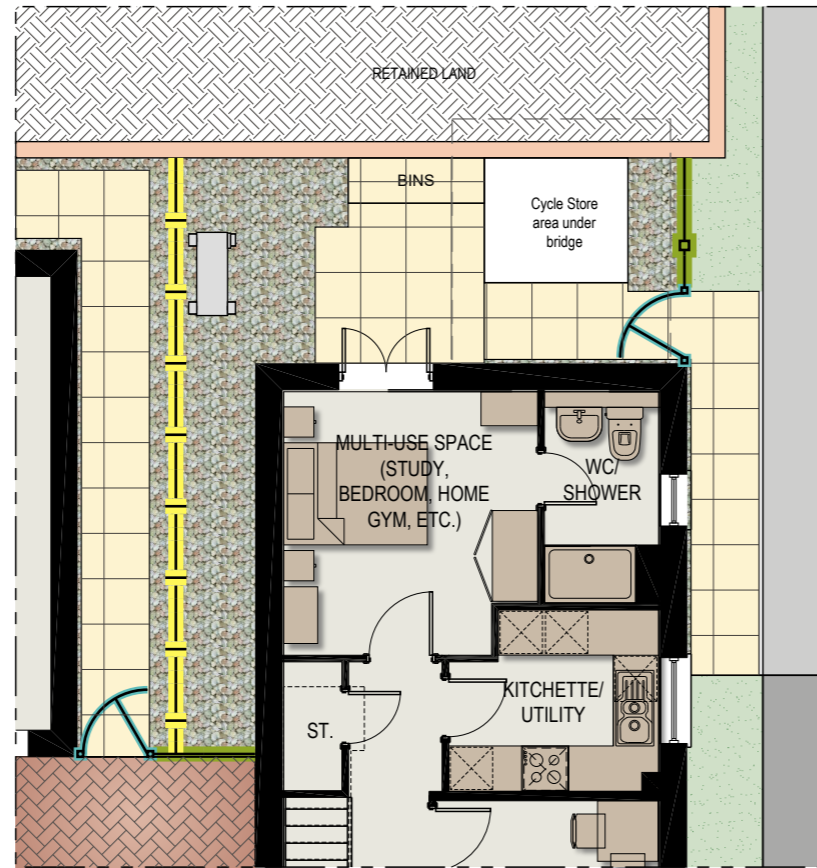
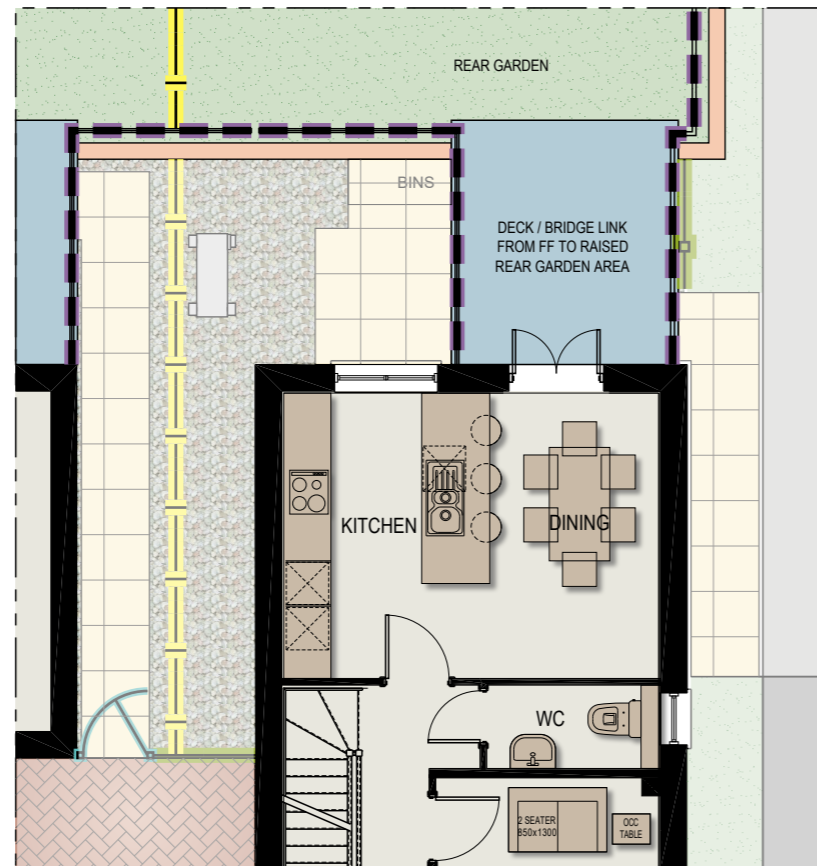


TYPICAL DETAIL FOR
HOUSE TYPE H1448











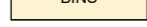




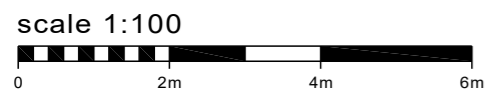
AS VERSION
GROUND FLOOR PLAN




AS VERSION
FIRST FLOOR PLAN

KEY

-  1.8m HIGH CLOSEBOARD FENCE
-  1.8m HIGH PANEL FENCE
-  1.5m HIGH CLOSEBOARD FENCE
TOPPED WITH 300mm TRELLIS
-  1.1m HIGH BLACK METAL VERTICAL BAR
RAILINGS
-  1.0m WIDE CLOSEBOARD GATE
-  1.8m HIGH SCREENWALL
-  2.7m HIGH RETAINING WALL
-  REAR GARDEN/SOFT LANDSCAPED
AREAS
-  GRAVEL
-  PAVING SLABS - BUFF RIVENDALE
PAVING SLABS 450 x 450 or 600x600mm
-  EXTERNAL BIN STORAGE AREA
-  AIR SOURCE HEAT PUMPS
-  DECK/ BRIDGE LINK FROM FF TO
RAISED REAR GARDEN AREA



REV	DATE	DESCRIPTION	DRAWN
<p>PROJECT PARCELS 5,6 & 7 (PHASE 2) BERWICK GREEN, CRIBBS CAUSEWAY</p>			
<p>TITLE TYPICAL EXTERNAL WORKS DETAIL SEMI-RETAINED HOUSE TYPE H1448</p>			
<p>Taylor Wimpey Bristol Ground Floor 730 Waterside Drive Aztec West Almondsbury Bristol BS32 4UE T 01454 628400 www.taylorwimpey.com NHBC REG No 76463</p>			
			
DRN	CDS	SCALE	DRAWING NUMBER
DATE	24.07.23	1/100 @ A3	22016.108.H1448
			REV
			-