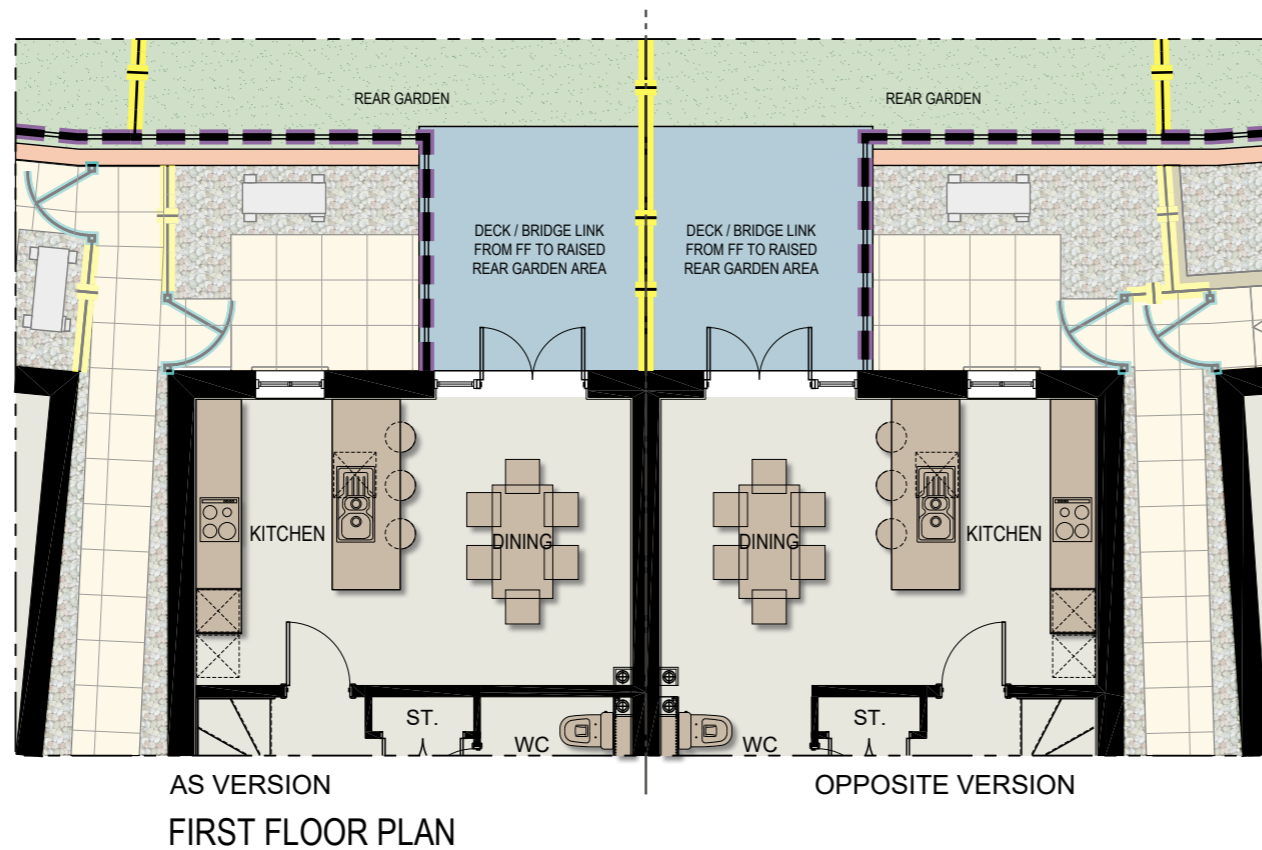
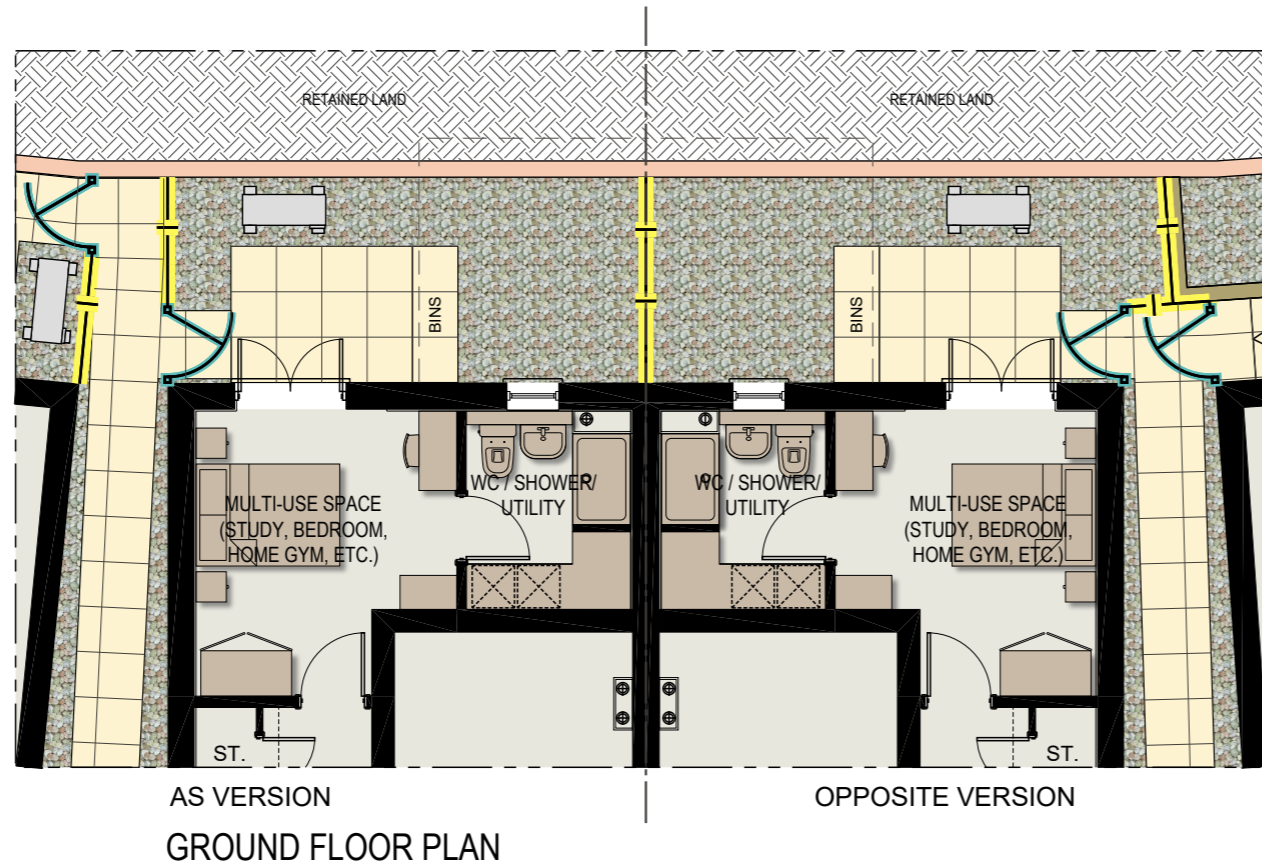







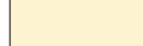
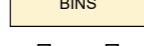


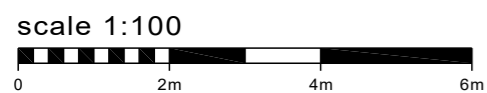


TYPICAL DETAIL FOR
HOUSE TYPE H1444



KEY

-  1.8m HIGH PANEL FENCE
-  1.1m HIGH BLACK METAL VERTICAL BAR RAILINGS
-  1.0m WIDE CLOSEBOARD GATE
-  2.7m HIGH RETAINING WALL
-  RETAINING WALL
-  REAR GARDEN AREAS
-  GRAVEL
-  PAVING SLABS - BUFF RIVENDALE
PAVING SLABS 450 x 450 or 600x600mm
-  BINS
EXTERNAL BIN STORAGE AREA
-  AIR SOURCE HEAT PUMPS
-  DECK/ BRIDGE LINK FROM FF TO RAISED REAR GARDEN AREA



REV	DATE	DESCRIPTION	DRAWN
PROJECT PARCELS 5,6 & 7 (PHASE 2) BERWICK GREEN, CRIBBS CAUSEWAY			
TITLE TYPICAL EXTERNAL WORKS DETAIL SEMI-RETAINED HOUSE TYPE H1444			
Taylor Wimpey Bristol Ground Floor 730 Waterside Drive Aztec West Almondsbury Bristol BS32 4UE T 01454 628400 www.taylorwimpey.com NHBC REG No 76463			
DRN	CDS	SCALE	DRAWING NUMBER
DATE	24.07.23	1/100 @ A3	22016.108.H1444
			REV
			-

