

Planting Notes

Topsoil: Hedge/shrub planting areas shall have 600mm minimum soil depths over a well broken base to facilitate drainage. This should comprise 400mm topsoil over a minimum 200mm subsoil. Add soil ameliorants in the form of compost/fertiliser tablets to shrub/hedge beds to aid growth. Imported topsoil must be BS3882:2015 compliant and existing topsoil must be cultivated in accordance with BS3882: 2015. No cultivation should take place in wet/waterlogged conditions.

Herbicide and cultivation: Topsoil to be treated with two applications of herbicide prior to planting, where necessary, strictly in accordance with the Control of Pesticides Regulations 1986 (as amended 1997, or, otherwise, updated/superseded legislation) and following manufacturer's instructions by qualified staff. The topsoil shall then be cultivated to 150mm depth.

Planting: All planting must be in accordance with BS3936 1992: Nursery Stock and BS 8545 2014 Trees from Nursery to Independence. Planting should take place between October to March and ground conditions must be suitable (avoid periods of frost, waterlogging etc.).

Trees: All tree planting should conform to BS8545:2014. Standard trees to be planted in pits 800x800x450mm or dimensions of rootball, whichever is greater. Alginate soil improver and 150g Enmag (or, equivalent) to be incorporated into the soil of all new tree pits. Trees to be planted centrally within a tree pit. Tree stakes shall be of hazel, chestnut or other approved timber. They shall be round, rough sawn, straight, free from projections, large or edge knots and other defects and be pointed at the lower end. They shall be strong enough not to split when driven into the ground and when ties are nailed to them (both initially and when adjusted). For Selected Standard Trees 2Nr stakes (1.7m by 100mm) and cross bar are required; stakes to be driven 900mm below ground leaving 800mm above ground.

Tree ties: All tree ties to be Green-Tech Holdfast Natural Tree Ties. Natural tree tie is made entirely of natural fibres and is fully bio-degradable. A spacer is formed using the Natural tree tie itself. It will not strangle the tree and will bio-degrade as the tree establishes itself.

Container grown shrubs, transplants and whips: Shrubs and transplants shall be planted in pits 300x300x400mm depth, and the backfill shall include 3 litres of peat-free tree and shrub compost. Where two or more shrub species are indicated within a single bed each species shall be randomly mixed throughout the bed in groups of 3/5.

Herbicide: Spot treat with herbicide throughout the maintenance period in accordance with the manufacturer's instructions.

Mulch: Planting beds to receive 75mm depth pulverized ornamental bark mulch. Shrub / hedgerow plants to be planted with Greenfix Mulch Mat - Type 11. Mulch Mats are 100% biodegradable with an approximate three year lifespan. Mulch Spats are ready-cut for individual plant production with a centre hole for plant protection. Mats pinned to soil.

Plant position: Final position of trees and shrubs subject to confirmation of service location and approval of statutory undertakers.

Protection to planting: Native hedgerow plants, trees and shrubs within mixes to be protected by Green-tech Bio-Earth Tree Shelter. The Bio-Earth Tree Shelter is made from a special water-proof FSC-approved cardboard which is 100% biodegradable, recyclable, and compostable. Lifespan is typically 3 years. Once the tree / shrub has established enough to no longer need it, the Bio-Earth Tree Shelter can be left to safely biodegrade.

Ornamental hedging: Hedges to comprise a single row of plants. 400mm wide trench excavated to take plants and topsoil cultivated to 400mm depth prior to application of fertiliser.

Grass: All turf/seeded areas to be cultivated and levelled as required removing any stones, rubble, subsoil, general construction waste.

Planting Season: Bare-root shrubs to be planted between mid-November and mid-March dependent upon the planting season.

Planting Schedule

Proposed Trees

Nr	Code	Tree Name	Specification	Girth	Height
2 -	Ac	Acer campestre	Selected Standard :Clear Stem 175-200 :RB	10-12cm	300-350cm
6 -	Ag	Alnus glutinosa	Selected Standard :Clear Stem 175-200 :RB	10-12cm	300-350cm
2 -	Pa	Prunus avium	Selected Standard :Clear Stem 175-200 :RB	10-12cm	300-350cm

Total :10 -

Hedges

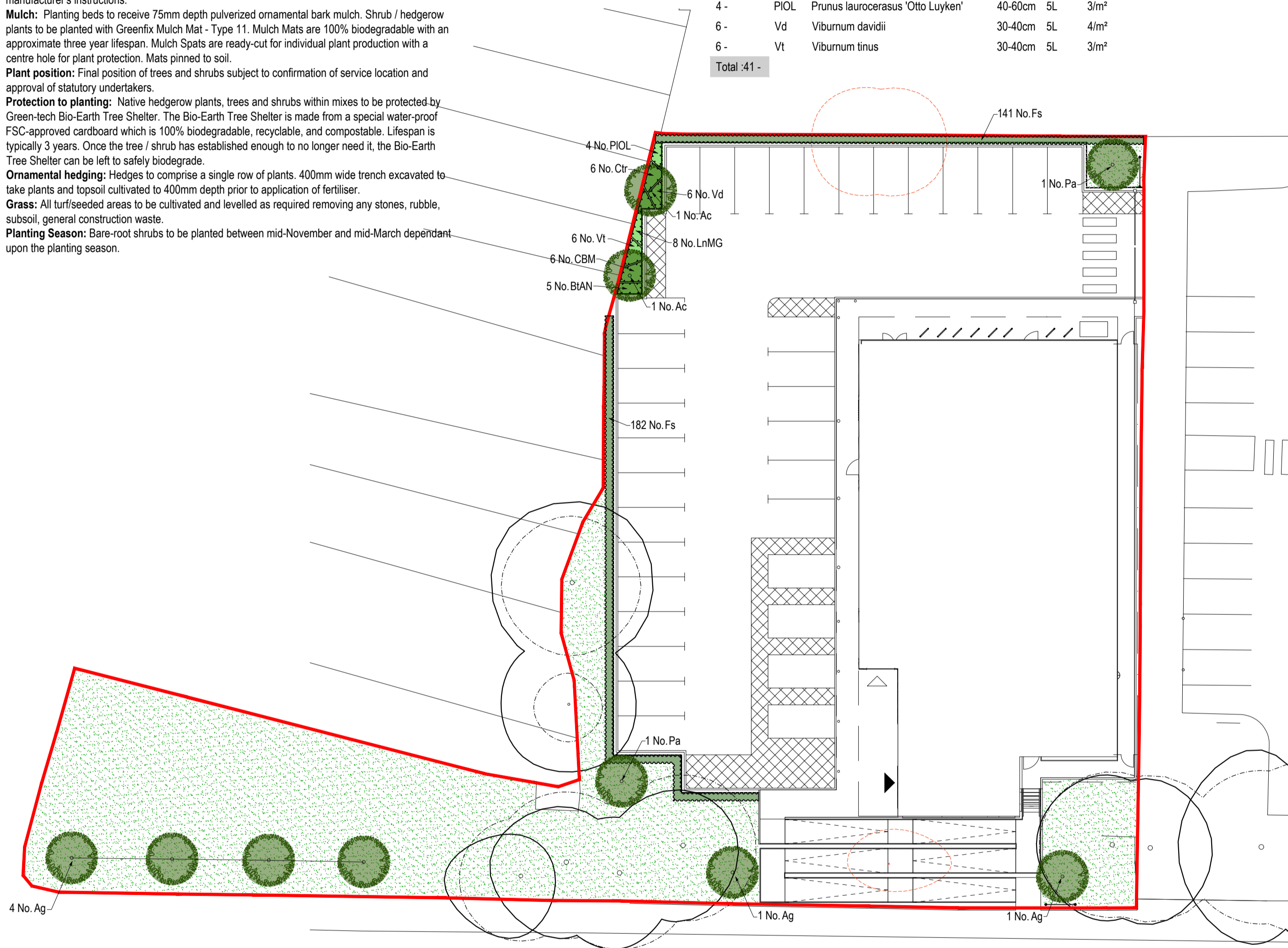
Nr	Code	Tree Name	Specification	Girth	Height
323 -	Fs	Fagus sylvatica	C		60-80cm

Total :323 -

Proposed Shrubs

Nr	Code	Plant Name	Height	Cntr (l)	Nr/m2
5 -	BTAN	Berberis thunbergii 'Atropurpurea Nana'	40-60cm	5L	3/m ²
6 -	CBM	Ceanothus 'Blue Mound'	30-40cm	5L	3/m ²
6 -	Ctr	Ceanothus thyrsiflorus repens	40-60cm	5-7.5L	3/m ²
8 -	LnMG	Lonicera nitida 'May Green'	30-40cm	5L	3/m ²
4 -	PIOL	Prunus laurocerasus 'Otto Luyken'	40-60cm	5L	3/m ²
6 -	Vd	Viburnum davidii	30-40cm	5L	4/m ²
6 -	Vt	Viburnum tinus	30-40cm	5L	3/m ²

Total :41 -



LEGEND

	Site boundary		Proposed tree Selected (Standard)
	Existing tree to be retained		Proposed hedge
	Existing tree to be removed		Proposed shrub bed
	Root protection area of retained trees in line with BS 5837:2012		Proposed grass

This drawing is the copyright of Rosetta Landscape Design and cannot be reproduced in any form without the express consent of the company. Written and scaled dimensions to be checked on site, any discrepancies reported prior to work commencing. **If in doubt please ask.**

This drawing has been prepared for the purpose of planning approval.

Rev D: Revised to Council comments - 09Sep22 (BP)

Rev C: Revised to P+HS Architects, 'Proposed Site Plan', HHC-PHS-XX-ZZ-DR-A-90003-P8 - 21Jun22 (BP)

Rev B: Red line boundary added & tree positions adjusted - 23Nov21 (MP/jr)

Rev A: Revised to HHC-005 Rev P5 - 21Nov21 (MP/jr)

Base: P+HS Architects, 'Proposed Site Plan', HHC-004 Rev P4

PROJECT Harehills Lane, Leeds

TITLE Detailed Landscape Proposals

CLIENT Mayfair Group Investment Ltd

DATE 27 Aug 21 SCALE 1 : 250 SHEET A2

DRAWN MP/jr DRAWING NO 3639/3

CHECKED MP REVISION D



Landscape Architects

Swallow's Nest, Main Street
Askham Richard, York, YO23 3PT

Telephone +44 (0)1904 500410

Email design@rosettalandscape.co.uk
Web www.rosettalandscape.co.uk