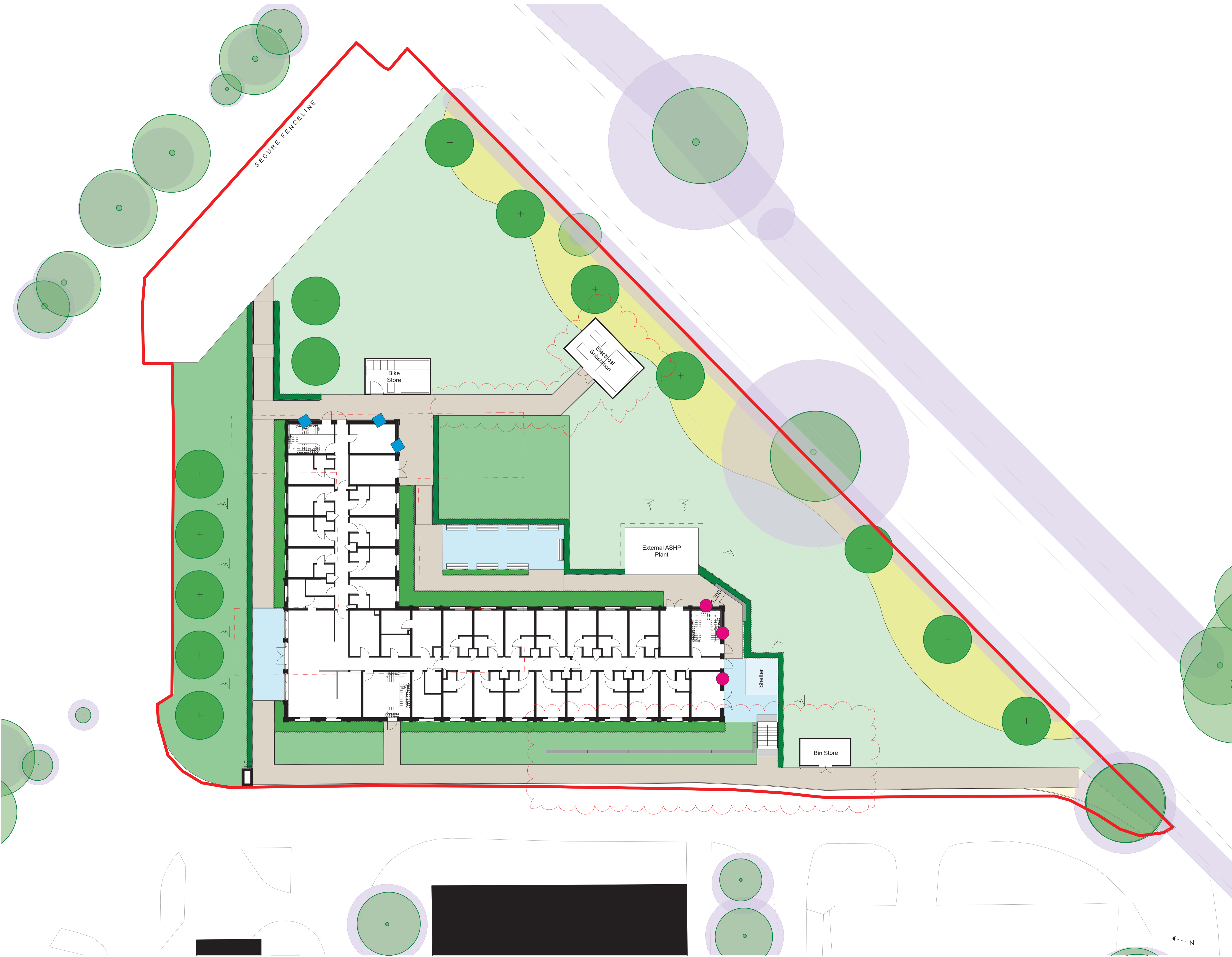


Notes
 Check all dimensions on site. Do not scale from this drawing
 Report any discrepancies and omissions to HLM Architects
 This Drawing is Copyright ©

- Key: Building Elements**
- ▲ Primary Entrances
 - ▲ Secondary Entrances
- Key: Landscaping**
- Existing Grass
 - Proposed Grass
 - Proposed shrub planting
 - Proposed hedge planting
 - Proposed Meadow Planting
 - Existing Footpaths
 - Proposed Footpaths
 - Proposed Paving
 - Proposed Steps
- Key: Arboriculture**
- Existing Trees
 - Root Protection Areas
 - Removed Trees
 - Proposed Trees
- Key: Ecological Improvements**
- Bird Boxes
 - Bat Boxes



Pos	STAGE 4 ISSUE - Substation added, Retaining wall added and Bin Store repositioned to accommodate existing gas services route.	16/12/23	CC	HLM
Pos	PRELIMINARY ISSUE FOR COMMENT	21/01/23	CC	HLM
Pos	ISSUED FOR NMA APPLICATION	05/09/23	CC	HLM
Pos	External steps, ramp and retaining wall amended in line with EIS comments.	30/05/23	CC	HLM
Pos	Preliminary Issue for Comment - Stage 3 Step Back	24/04/23	ZK	HLM
Rev	Description	Date	By	Chk

Revisions	Suitability
Project	S3 REVIEW AND COMMENT

KENDREW BARRACKS OFFICIAL

Client
DEFENCE INFRASTRUCTURE ORGANISATION

Title
PROPOSED SITE 1, GENERAL LANDSCAPE PLAN-XX-G00400-XX

Drawing No.	Revision
Z9A8416Y20-HLM-XX-KEND01XXXXF00-DR-L-000103-	P05

Scale @ A1	Drawn
1:200	CC
Date	Checked
15/10/2021	HLM

HLM Architects

© HLM Architects
 2nd Floor
 Ailsa Court
 121 West Regent Street
 Glasgow G2 2SD

www.hlmarchitects.com
 T. +44 (0) 141 226 8320
 F. +44 (0) 141 226 8350
 glasgow@hlmarchitects.com

