

Proposed Dwelling.
91A North Park Drive.
Blackpool FY3 8NH.

**Tree Survey and Arboricultural
Implications Assessment**

Richard Eaves



CMLI Chartered Landscape Architect and Environmental Planner
3 Park Terrace, The Green, Wrea Green, Preston, PR4 2WN

CONTENTS

- 1.0 INTRODUCTION**
- 2.0 STATUTORY PROTECTION IN RESPECT OF TREES AND WILDLIFE**
- 3.0 ARBORICULTURAL CONSTRAINTS**
- 4.0 ARBORICULTURAL IMPACT ASSESSMENT**
- 5.0 ARBORICULTURAL METHOD STATEMENT**

APPENDIX 1 - Tree Survey Schedule

APPENDIX 2 - Tree Constraints Plan

APPENDIX 3 - Tree Protection Plan

APPENDIX 4 - BS5837:2012 Figure 3 Protective Barrier

APPENDIX 5 - Tree Protection Notice

1.0 INTRODUCTION

- 1.1 This Tree Survey and Arboricultural Implications Assessment has been prepared by Richard Eaves CMLI to British Standard 5837: 2012 Trees in relation to design, demolition and construction – Recommendations at 91A North Park Drive, Blackpool FY3 8NH.
- 1.2 A topographical plan was provided with trees and other vegetation indicated, and it has been assumed that the tree locations are accurate. Additional trees not shown on the plan have been estimated. Where access was not possible measurements have been estimated.
- 1.3 A site visit was undertaken on Friday 25th August 2017 and a pre development Tree Survey and Arboricultural Constraints Assessment was issued in September 2017. All observations were made from ground level without detailed investigations. It should be noted that this survey is not a tree safety inspection and is undertaken to inform the planning process.
- 1.4 This document has been updated following a further site visit on Friday 8th January 2021 and receipt of the proposed site layout.

2.0 STATUTORY PROTECTION IN RESPECT OF TREES AND WILDLIFE

Tree Preservation Orders and Conservation Area Designations

- 2.1 Section 198 of the Town and Country Planning Act 1990 and associated Regulations empowers local planning authorities to protect trees in the interests of amenity by making Tree Preservation Orders. Section 211 of the Town and Country Planning Act 1990 also affords protection for trees over 75mm diameter that stand within the curtilage of a Conservation Area.
- 2.2 Subject to certain specified exemptions, an application must be made to the local planning authority to carry out works upon or to remove trees that are subject to a Tree Preservation Order, whilst six weeks notice of intention must be given to carry out works upon or remove trees within a Conservation Area and not protected by a Tree Preservation Order. However, where directly affecting the implementation of an

approved development, works may be carried out to trees thus protected as are necessary to implement the development.

- 2.3 It is not known if any trees are protected by Tree Preservation Orders and the presence of any such statutory protection should be checked with the local planning authority.

Protected Species

- 2.4 Nesting birds are afforded statutory protection under the Wildlife and Countryside Act (1981) (as amended) and their potential presence should therefore be considered prior to vegetation clearance which should be avoided during the bird nesting season – March to August inclusive, unless it can be demonstrated by an ecologist that no breeding birds, active nests or fledglings are present.

- 2.5 All species of bat are protected under Schedule 5 of the Wildlife and Countryside Act (1981) (as amended) and under Schedule 2 of the Conservation of Habitats and Species Regulations 2010. Should any bat roost be identified in proximity to the proposed works they should be investigated by a qualified and suitably experienced ecologist.

3.0 ARBORICULTURAL CONSTRAINTS

- 3.1 The tree data collected on site is presented in the Tree Survey Schedule at Appendix 1 which should be read with associated key which explains the terms and abbreviations used in the schedule together with the Tree Constraints Plan at Appendix 2.

- 3.2 The trees respective retention values are rated either A, B, C or U as detailed in BS5837:2012 Table 1. The former classification is for trees considered of high quality and subsequently most suitable for retention and the latter for trees in relatively poor condition whereby they should be removed for reasons of sound arboricultural management. As such the guidance states that only trees classed as A, B or C should be a material consideration in the development process. A total of fourteen individual trees and one hedgerow have been surveyed.

- 3.3 The Tree Constraints Plan shows a representation of the crown spread of each tree or group marked with a colour representing each category as identified in the key on the plan. The Tree Constraints Plan also shows the Root Protection Areas. This represents the minimum area which should ideally be left undisturbed around each tree or group were it to be retained.
- 3.4 Category A trees are those of significant high quality and value in terms of arboriculture, landscape and conservation. These trees normally pose a constraint to development and should be retained and protected within the design if possible. No category A trees have been identified.
- 3.5 Category B trees are those of moderate quality and value in terms of arboriculture, landscape and conservation, these trees may pose a constraint to development and should be retained and protected within the design if possible. Two individual trees have been identified as category B trees. These would be unaffected by the proposed development.
- 3.6 Category C trees are those of low quality and value in terms of arboriculture, landscape and conservation and young trees with a stem diameter of 150mm or less. These trees should not be considered as posing a constraint to development but should be retained and protected or a case presented for removal. Eleven individual trees have been identified as category C trees. Six of these have been removed.
- 3.7 Category U trees are those in such a condition that any existing value would be lost within ten years and which should, in the current context be removed for reasons of sound arboricultural management. One individual tree has been identified as a category U tree.
- 3.8 Hedgerows have not been afforded a quality value as they do not fall within the scope of BS5837:2012.

4.0 ARBORICULTURAL IMPACT ASSESSMENT

- 4.1 The table shows that four category C trees and one hedge have already been removed, these would have been necessary to implement the proposed development. Two category C trees have been removed for non development related reasons and one

category U tree should be removed due to its poor condition and short remaining life expectancy.

ARBORICULTURAL IMPACT ASSESSMENT TABLE

Category	Removals necessary to implement development	Removals recommended for non development related reasons
A	-	-
B	-	-
C	T1, T2, T3, T4	T6, T9
U	-	T5
Hedge	H1	-

5.0 ARBORICULTURAL METHOD STATEMENT

5.1 Prior to site works commencing those trees identified for retention in proximity to the works shall be physically protected from damage. This shall be achieved by the erection of fixed barrier fencing. The location and extent of the tree protection barriers to provide a construction exclusion zone is shown on the Tree Protection Plan at Appendix 3.

5.2 Barriers should be fit for the purpose of excluding construction activity and appropriate to the degree and proximity of work taking place around the retained trees. Barriers should be maintained to ensure that they remain rigid and complete. Barriers shall consist of 2m high heras type weldmesh panels on rubber or concrete feet, joined together using a minimum of two anti-tamper couplers, installed so that they can only be removed from inside the fence. The distance between the couplers shall be at least 1m and shall be uniform throughout the fence. The panels shall be supported on the inner side by stabiliser struts as BS5837:2012 Figure 3 at Appendix 4. Tree protection notices shall be fixed to the barriers at regular intervals as the example in Appendix 5.

5.3 Once erected tree protection barriers shall be regarded as sacrosanct and must not be removed or altered without the prior approval of the local planning authority.

5.4 Within the construction exclusion zone the following shall apply:

- There shall be no changes in ground levels
- No excavation whatsoever
- No storage of plant or materials
- No storage or handling of any chemicals including cement washings
- No vehicular access

5.5 No fire shall be lit within 20m of any tree.

A 10m separation distance shall be observed between any tree and substances injurious to tree health including fuel, oil, bitumen, cement, concrete mixing and other chemicals.

5.6 The temporary tree protection barriers shall be regularly checked and maintained in good condition for the duration of the works. Site checks will be the responsibility of the site foreman or a person authorised in their absence and shall be recorded in a site specific diary which shall be available at all times upon request. All diary entries shall be authorised and checked by the site foreman or appointed person. All communications with the local planning authority, shall be recorded, entered in the site diary and authorised by the site foreman or appointed person.

5.7 On completion of construction works tree protection barriers should be carefully removed.

APPENDIX 1

Tree Survey Schedule

TREE SURVEY SCHEDULE. PROPOSED DWELLING. 91A NORTH PARK DRIVE, BLACKPOOL FY3 8NH. SHEET 1.

No.	Species	Height (m)	Stem Diam. (mm)	Branch Spread (m)	Height of first branch (m)	Crown Clearance (m)	Age Class	PC	Observations	Preliminary Management Recommendations	ERC (years)	Cat. Grade	RPA Radii (m)
T1	Ornamental Cherry <i>Prunus sp.</i>	-	-	-	-	-	-	-	Stump	-	-	-	-
T2	Cider Gum <i>Eucalyptus gunnii</i>	-	-	-	-	-	-	-	Stump	-	-	-	-
T3	Cider Gum	-	-	-	-	-	-	-	Stump	-	-	-	-
T4	Silver Birch <i>Betula pendula</i>	-	-	-	-	-	-	-	Stump	-	-	-	-
T5	Maple <i>Acer sp.</i>	4.0	220	N 1.0 E 2.5 S 1.0 W 2.0	2.2 E	3.0	SM	Poor	Severely pruned. Poor form, low vigour.	Remove	<10	U	2.64
T6	Maple	-	-	-	-	-	-	-	Client advises the tree recently collapsed and was removed.	-	-	-	-
T7	Silver Birch	9.0	250	N 2.0 E 3.0 S 3.0 W 2.0	1.5 E	4.0	SM	Fair	Part of group with interconnecting crowns. Evidence of past pruning, deadwood.	Ensure protection of RPA throughout development with construction exclusion zone (CEZ).	10+	C1/2	3.00
T8	Maple	8.0	200	N 2.5 E 2.5 S 2.5 W 2.5	2.5 N	4.0	SM	Fair	Part of group with interconnecting crowns. Evidence of past pruning, deadwood.	Ensure protection of RPA throughout development with construction exclusion zone (CEZ).	10+	C1/2	2.40

TREE SURVEY SCHEDULE. PROPOSED DWELLING. 91A NORTH PARK DRIVE, BLACKPOOL FY3 8NH. SHEET 2.

No.	Species	Height (m)	Stem Diam. (mm)	Branch Spread (m)	Height of first branch (m)	Crown Clearance (m)	Age Class	PC	Observations	Preliminary Management Recommendations	ERC (years)	Cat. Grade	RPA Radii (m)
T9	Common Oak <i>Quercus robur</i>	-	-	-	-	-	-	-	Stump	-	-	-	-
T10	Maple	8.0	250	N 3.0 E 4.0 S 4.0 W 4.0	2.5 S	3.0	SM	Fair	Part of group with interconnecting crowns. Minor deadwood.	Ensure protection of RPA throughout development with construction exclusion zone (CEZ).	10+	C1/2	3.00
T11	Goat Willow <i>Salix caprea</i>	8.0	200 150 120 100 x2	N 3.0 E 2.0 S 3.0 W 3.0	2.0 W	4.0	Mat	Fair	Part of group with interconnecting crowns. Evidence of past topping with regrowth.	Ensure protection of RPA throughout development with construction exclusion zone (CEZ).	10+	C1/2	3.73
T12	Weeping Willow <i>Salix sp.</i>	8.0	450	N 8.0 E 8.0 S 8.0 W 7.0	3.5 N	2.0	Mat	Fair	Part of group with interconnecting crowns. Leaning to the east.	Ensure protection of RPA throughout development with construction exclusion zone (CEZ).	10+	C1/2	5.40
T13	Ornamental Cherry	5.0	430	N 4.0 E 4.0 S 4.0 W 4.0	2.0 W	2.5	Mat	Fair	Located close to wall. Public visual amenity value. Minor deadwood. Unaffected by proposed development.	-	20+	B1/2	5.16
T14	Ornamental Cherry	4.5	140 X3	N 3.0 E 3.0 S 4.0 W 3.0	1.2 S	2.5	Mat	Fair	Located close to wall. Public visual amenity value. Minor deadwood. Unaffected by proposed development.	-	20+	B1/2	2.90

TREE SURVEY SCHEDULE. PROPOSED DWELLING. 91A NORTH PARK DRIVE, BLACKPOOL FY3 8NH. SHEET 3.

No.	Species	Height (m)	Stem Diam. (mm)	Branch Spread (m)	Height of first branch (m)	Crown Clearance (m)	Age Class	PC	Observations	Preliminary Management Recommendations	ERC (years)	Cat. Grade	RPA Radii (m)
H1	Leylands Cypress <i>Cupressocyparis leylandii</i> Ornamental Shrubs Ornamental Conifer Elder <i>Sambucus nigra</i> Ivy <i>Hedera sp.</i>	Avg 4.0	Varies	Avg 2.0 wide	Varies	0.0	SM	Fair	Informal garden hedge mainly Leylands Cypress. Well furnished. Client advises that hedge has now been removed.	-	10+	-	-

KEY

No. allocated Tree (T), Group (G), Woodland (W) or Hedge (H)

Species have been recorded by common name and botanical name where appropriate

Height has been recorded in metres and is estimated

Stem Diameter at 1.5m above ground level is recorded in millimetres.

Branch Spread has been recorded in metres at four cardinal points

Height of Crown Clearance above adjacent ground has been recorded in metres

Age Class has been recorded as follows: Yng – Young trees, SM – Semi mature trees, Mat – Mature trees, Om – Over mature trees, V – Veteran trees

Physiological Condition has been recorded- Good, Fair, Poor and Dead

Observations have been recorded

Preliminary Management Recommendations are provided where appropriate

Remaining Contribution has been estimated in years. E.g. < 10, 10+, 20+, 40+

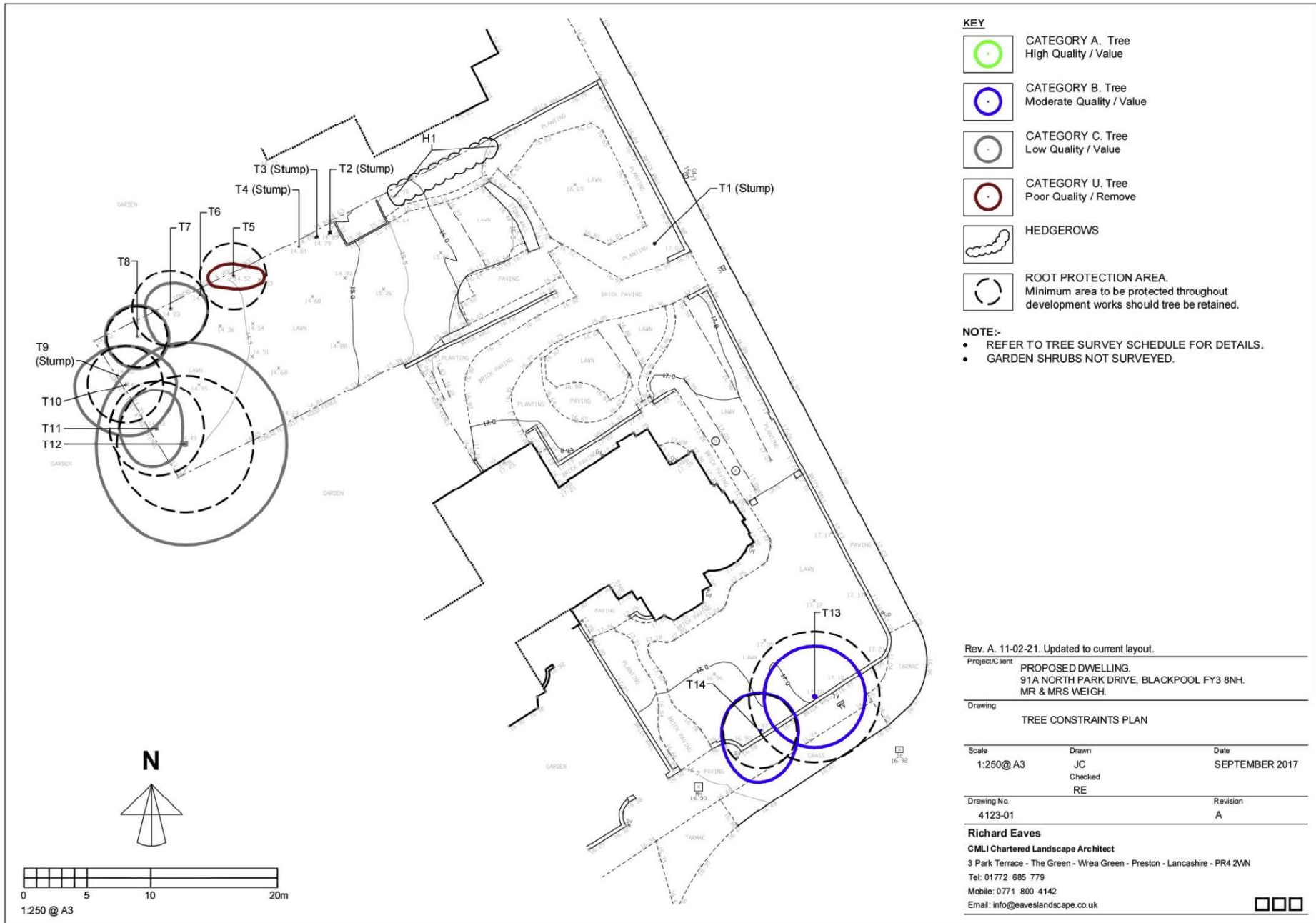
Category Grading has been recorded in accordance with table 1 of BS5837 as follows:

U – Trees that should be removed for reasons of sound arboricultural management, A – Trees of high quality and value, B – Trees of moderate quality and value, C – Trees of low quality and value

Root protection area (RPA) is calculated from BS5837 and recorded as the radius of a circle. This is the minimum area which should be left undisturbed around each retained tree.

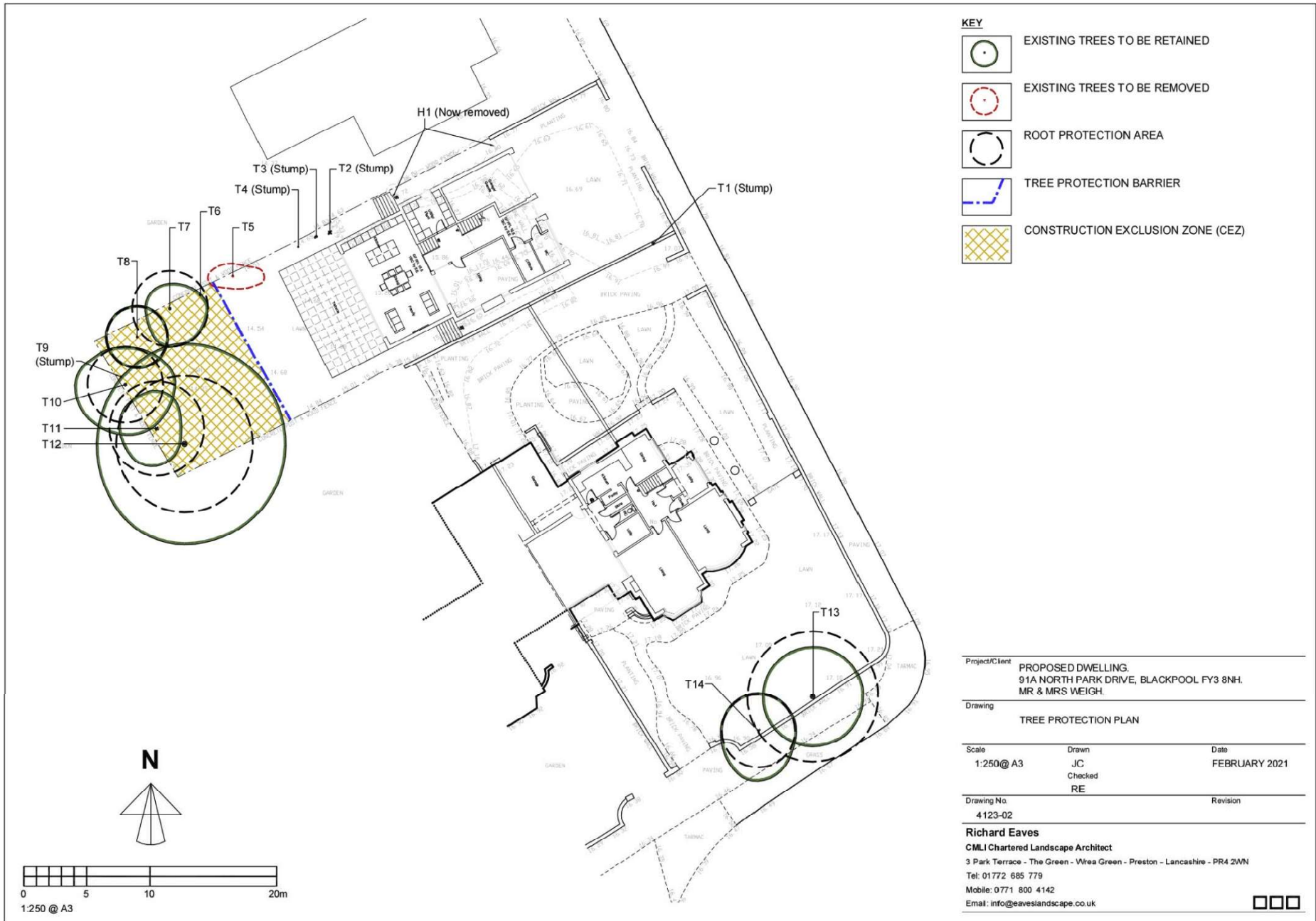
APPENDIX 2

Tree Constraints Plan



APPENDIX 3

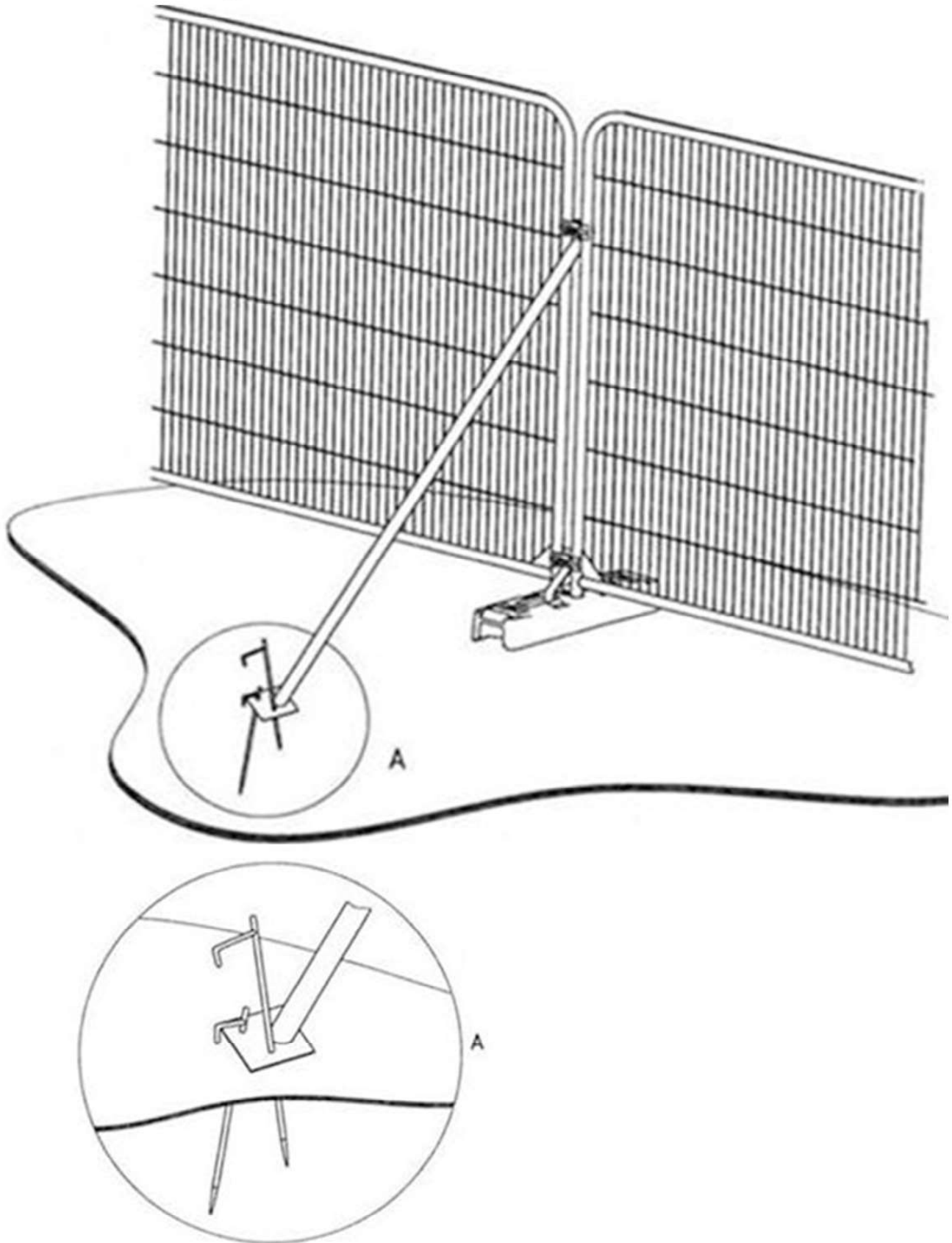
Tree Protection Plan



APPENDIX 4

BS5837:2012 Figure 3 Protective Barrier

BS5837: 2012 Figure 3 Protective Barrier



a) Stabiliser strut with base plate secured with ground pins

APPENDIX 5

Tree Protection Notice

Tree Protection Notice



TREE PROTECTION AREA KEEP OUT!

THE FOLLOWING **MUST** BE OBSERVED BY ALL PERSONS:-

- THE PROTECTIVE FENCING MUST NOT BE REMOVED
- NO PERSON SHALL ENTER THE PROTECTED AREA
- NO MACHINE OR PLANT SHALL ENTER THE PROTECTED AREA
- NO MATERIALS SHALL BE STORED IN THE PROTECTED AREA
- NO SPOIL SHALL BE DEPOSITED IN THE PROTECTED AREA
- NO EXCAVATION SHALL OCCUR IN THE PROTECTED AREA

**ANY INCURSION INTO THE PROTECTED AREA MUST BE
WITH THE WRITTEN PERMISSION OF THE LOCAL PLANNING AUTHORITY**