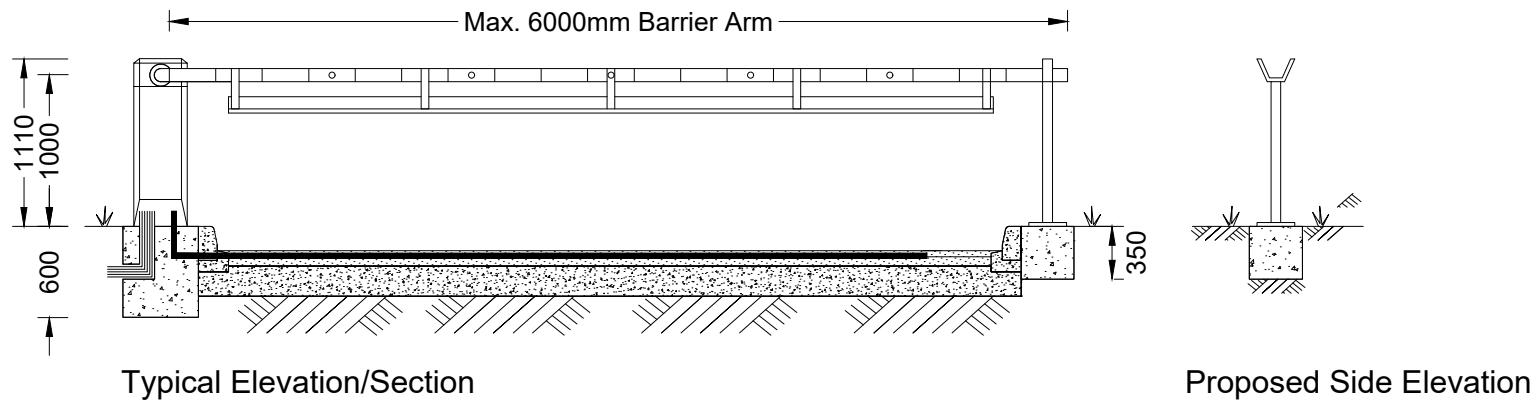
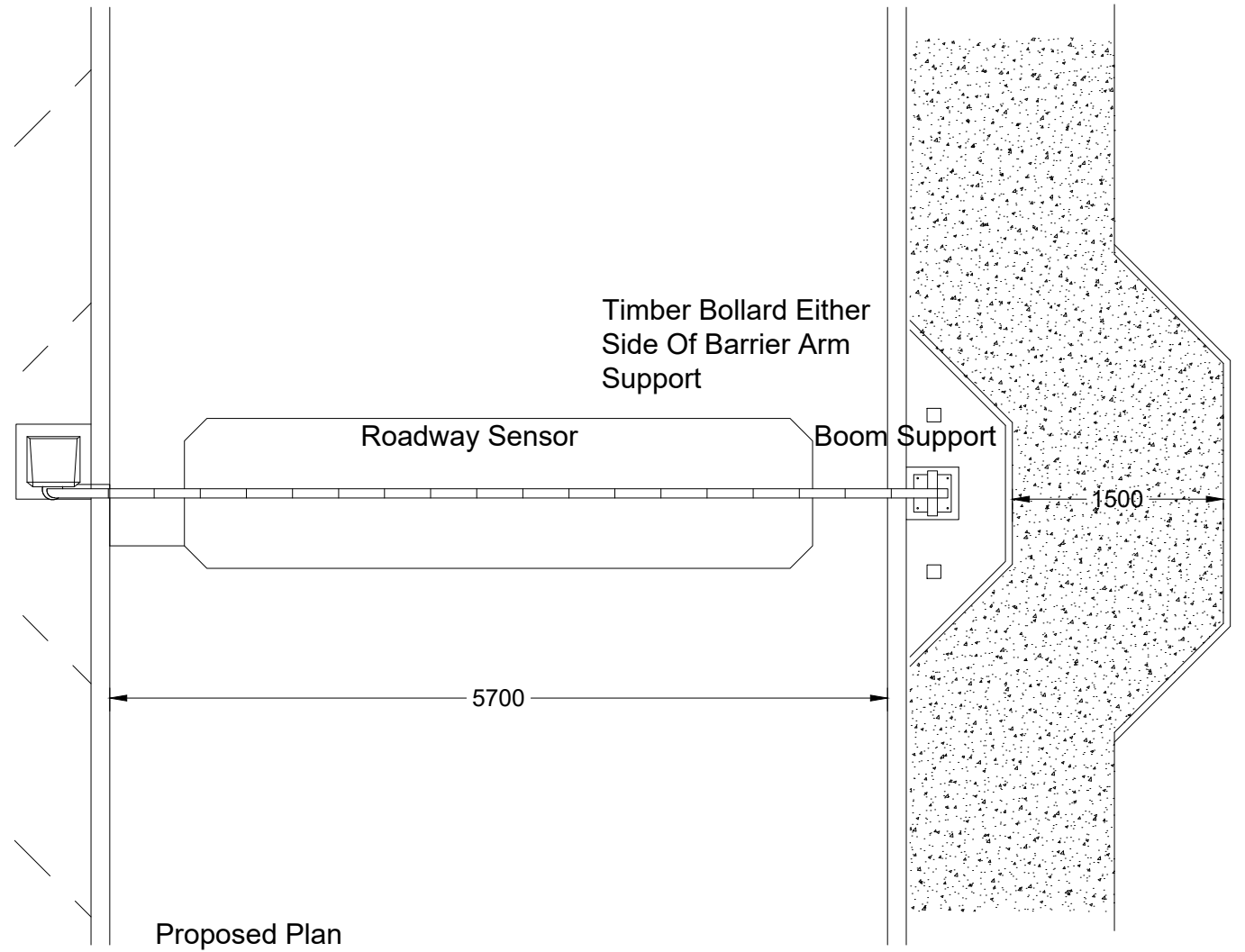


Proximity Keypad - KI-200 To Be Supplied By Parking Facilities LTD



1500mm Tarmac Bypass path

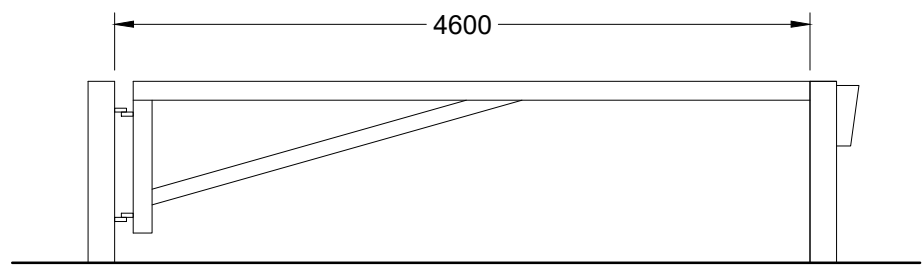


Automatic Security Barrier To Be Supplied By Parking Facilities LTD.

Parking Facilities LTD, Unit 1 Kingsbury Link, Trinity Road, Tamworth
E-Mail - sales@parkingfacilities.co.uk
Tel: - 01827870250

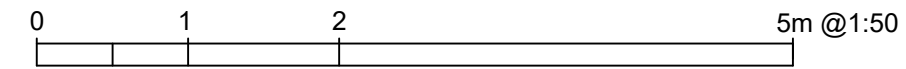
- Automatic Entrance / Exit Barriers Specification:
- Entrance Barrier To Be Operated Via A Four Digit Keypad.
 - Exit Should Be Operated By A Sensor Pad In Roadway.
 - Push Button Override From Within Reception.
 - Disablement For Out Of Hours.
 - Photoelectric Cells And Magnetic Sensors To Prevent Descent On Vehicles.
 - Barrier Control Unit Must be Situated On The Left Hand Side. Fixed Barrier Support On The Right.
 - Illuminated Strip On Boom/Barrier Arm.

Specification:
AC Approved (conforms to BS6571)
Maximum Boom Length: 6m
Boom Diameter: 86mm x 60mm Oval
Opening And Closing Time 3-8secs
Drive Unit:
3 Phase Motor & Wormed Gearbox
Power Unit:
Single Phase 230v, 50Hz, 10 Amps



Existing Elevation

Existing barrier



rjd
Architectural Design & Project Management
info@rjd.eu.com

project
NOTTINGHAM CLUB,
STRAGGLETHORPE ROAD,
NOTTINGHAM, NG12 2JZ
client
THE CAMPING & CARAVANNING CLUB

drawing
EXISTING & PROPOSED ENTRANCE
BARRIER DETAILS

date Dec 23 scale Varies@A3 drawing no. /004 rev -