

notes

When this drawing is issued in uncontrolled CAD format it will be accompanied by a PDF version and is issued to enable the recipient to prepare their own documents / models / drawings for which they are solely responsible.

The recipient should report all drawing errors, omissions and discrepancies to the architect. All dimensions should be checked on site by the contractor and such dimensions shall be the contractor's responsibility.

Allford Hall Monaghan Morris Limited accepts no responsibility or liability for:  
 -Any use of this drawing by parties other than the party for whom it was prepared or for purposes other than those for which it was prepared  
 -Any alterations or additions to or discrepancies arising out of changes to the background information on which the drawings are based that was current at the time of issue, and which occur to that information after it has been issued by AHMM  
 -Any loss or degradation of the information held in this drawing resulting from the translation from the original file format to any other file format or from the recipient's reading of it in any other programme or any version of the programme other than that which was used to prepare it  
 -The accuracy of survey information provided by others or for any costs, claims, proceedings and expenses arising out of reliance on such information  
 Any scaling from this drawing other than by the local planning authority solely for the purposes of the planning application to which it relates

The drawing shows the general arrangement together with the nominal sizes of selected elements and components. The information shown indicates the design intent of the architect and is to be read in conjunction with the performance specification. The Contractor must include for all design development and coordination required to complete the works.

Colours shown are indicative and for illustrative purposes to indicate variation in material tone between volumes in the elevation with 5 different types of selected facing bricks.

For external levels, planting, tree locations and quantities, please refer to Landscape Architect information.

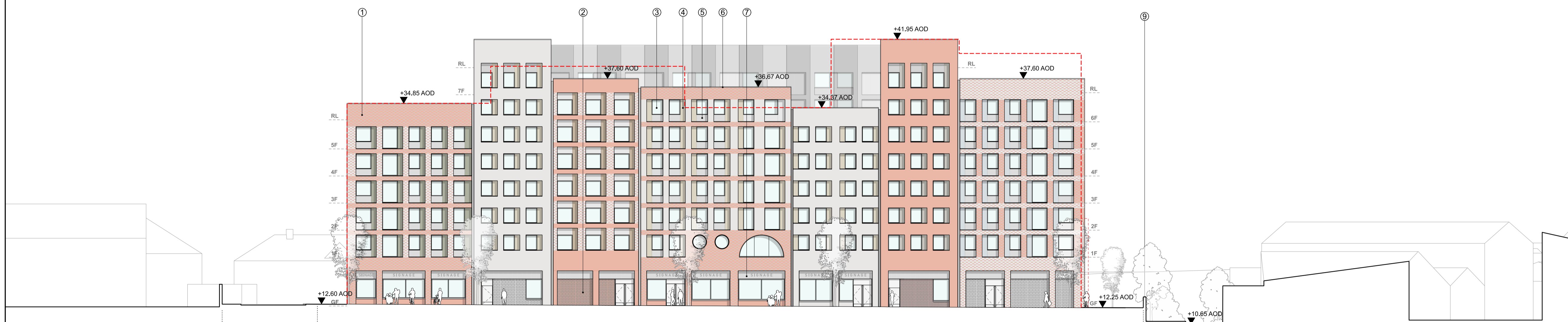
KEY

- ① SELECTED FACING BRICKWORK
- ② PERFORATED 'HIT & MISS' BRICK SCREEN
- ③ DOUBLE GLAZING WITH PPC METAL FRAMED WINDOW
- ④ FIXED PERFORATED PPC FINISHED METAL PANEL WITH OPENING VENT BEHIND (VERTICAL)
- ⑤ PROFILED METAL PPC FINISHED PANEL (HORIZONTAL)
- ⑥ PRECAST PARAPET COPING DETAIL
- ⑦ SIGNAGE ZONE
- ⑧ AMENITY BRIDGE WITH EXPRESSED METAL TRUSS & GLAZING BEHIND
- ⑨ WALL ALONG EXISTING CYCLE PATH
- ⑩ METAL COPING DETAIL FOR TOWNHOUSES

- BRICK TYPE/PATTERN 1
- BRICK TYPE/PATTERN 2
- BRICK TYPE/PATTERN 3
- BRICK TYPE/PATTERN 4



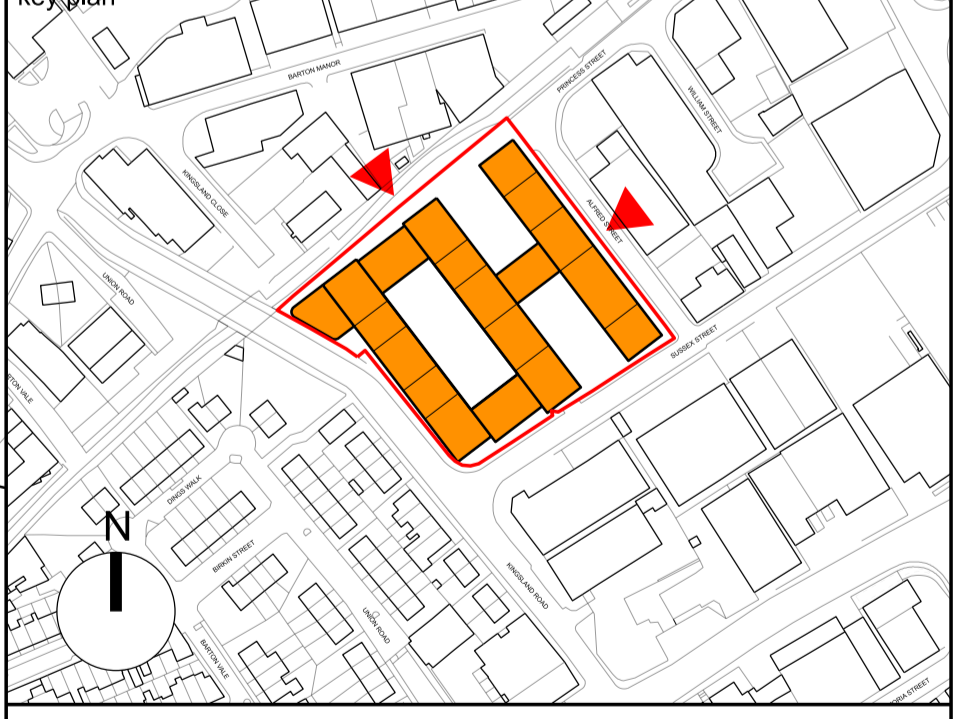
NORTH ELEVATION



EAST ELEVATION

P02	17/11/23	UPDATED ISSUE FOR PLANNING
P01	31/03/23	PLANNING

Rev	Status	Date	Description
-----	--------	------	-------------



**ALLFORD HALL MONAGHAN MORRIS**

ARCHITECTS Ltd.  
 MORELANDS, 5-23 OLD STREET LONDON EC1V 9HL  
 TEL 020 7251 5261 FAX 020 7251 5123 WEB WWW.AHMM.CO.UK

client  
 DOMINUS BRISTOL LIMITED

project name  
 NEW HENRY STREET, BRISTOL  
 drawing title  
 PROPOSED ELEVATIONS - NORTH & EAST

drawn	checked	scale	status
TM	JR	1:250@A1 / 1:500@A3	PLANNING

project	originator	volume	level	type	role	drawing no.
22096	AHMM	ZZ	ZZ	DR	A	PL203