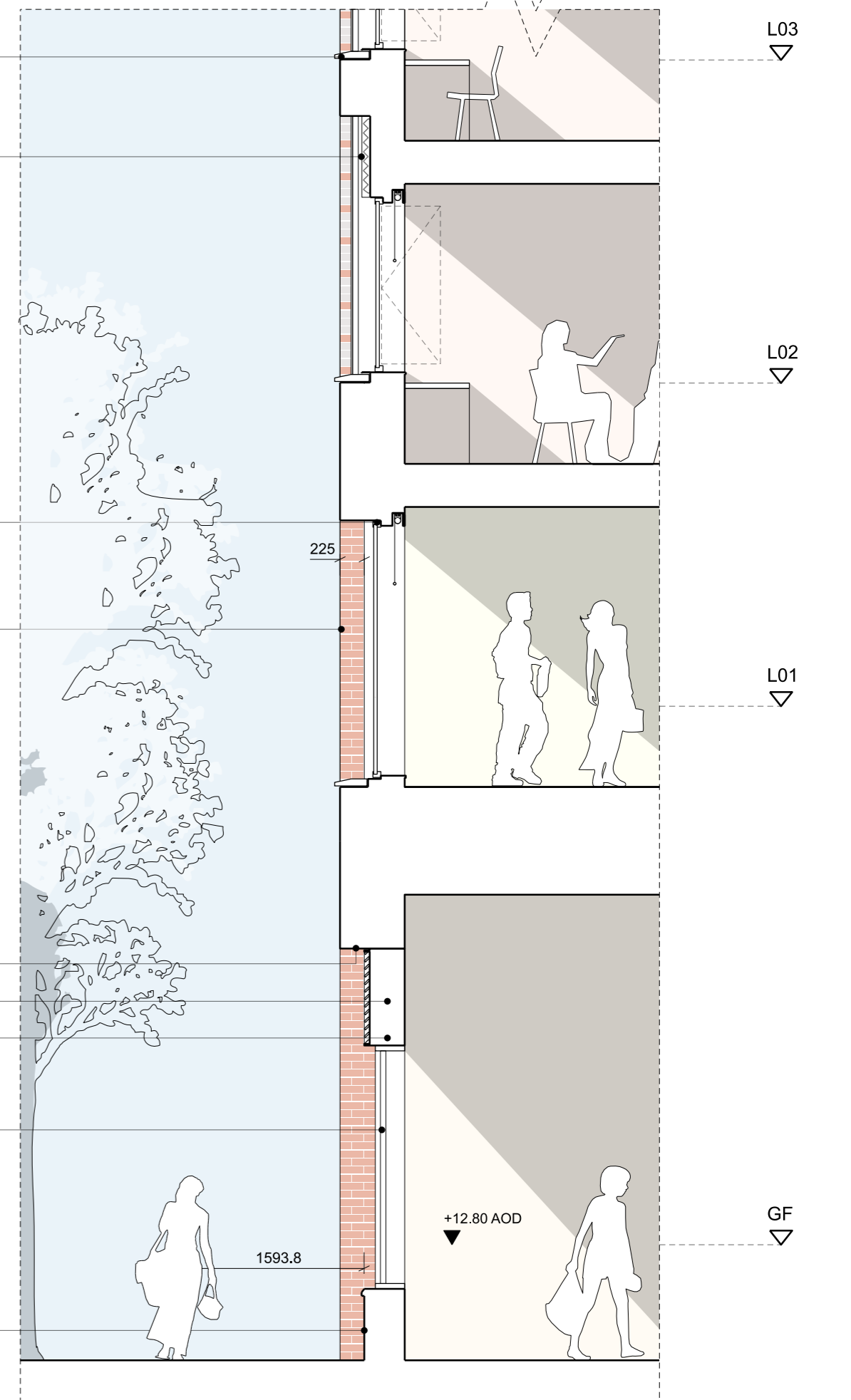
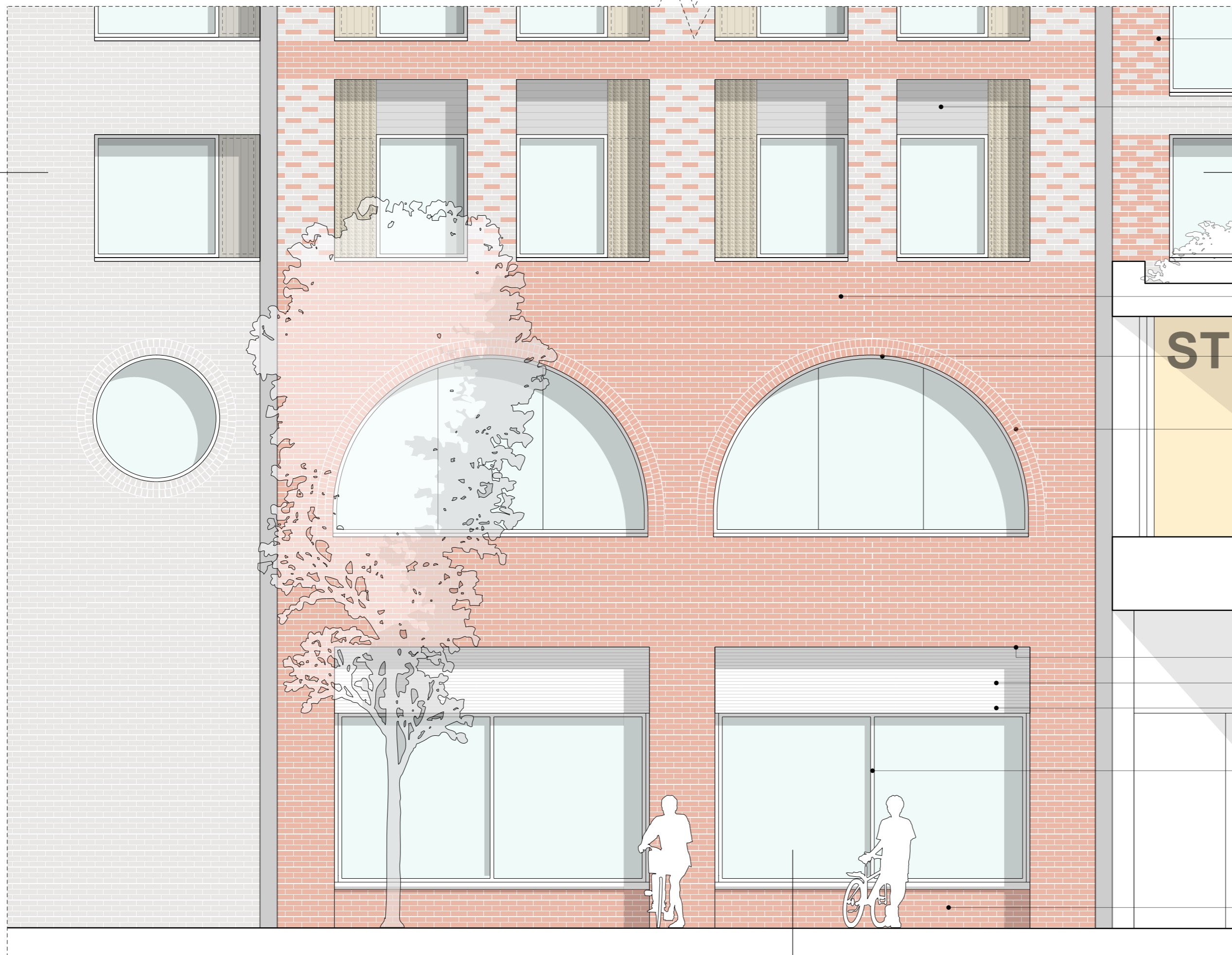
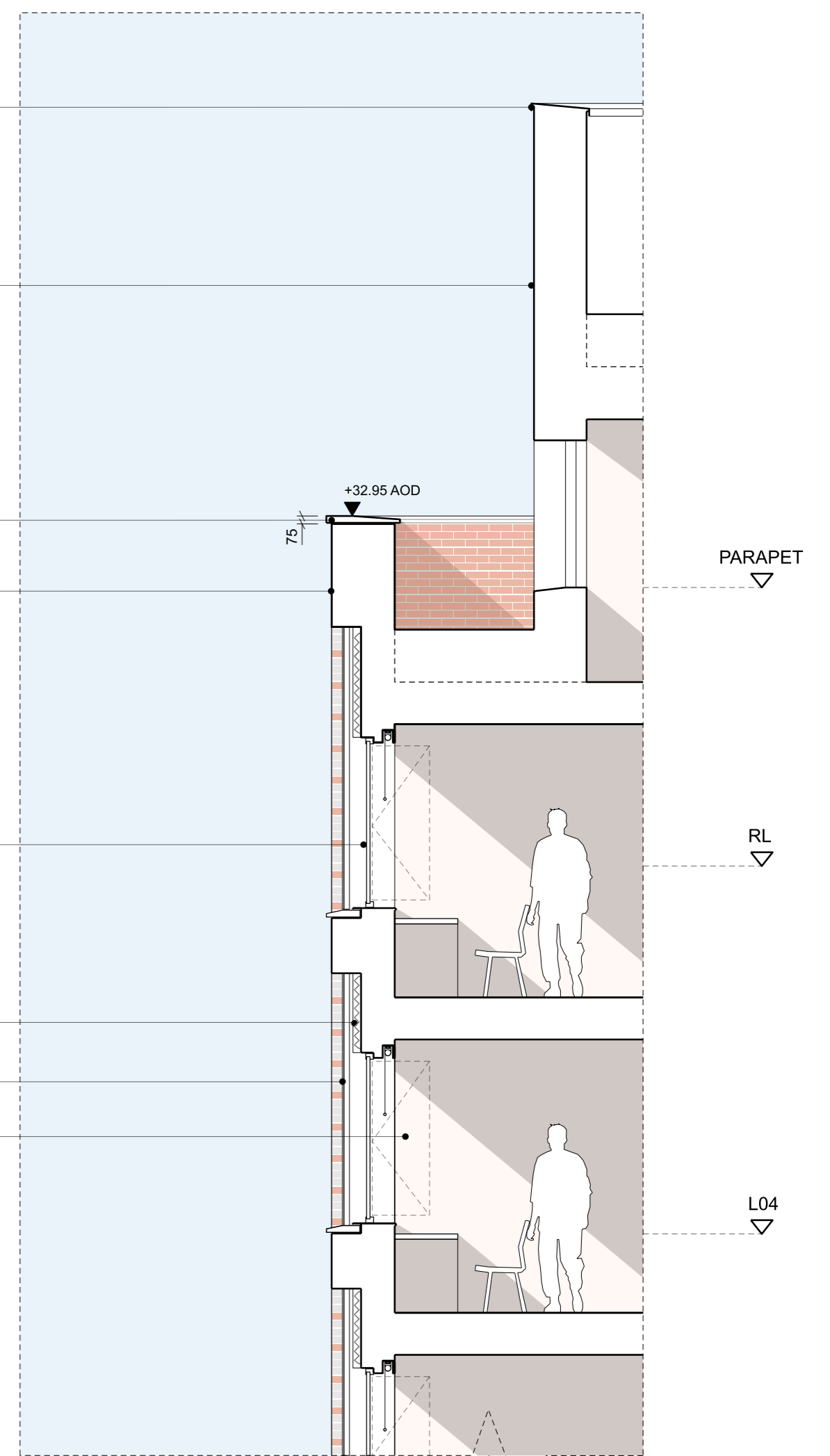
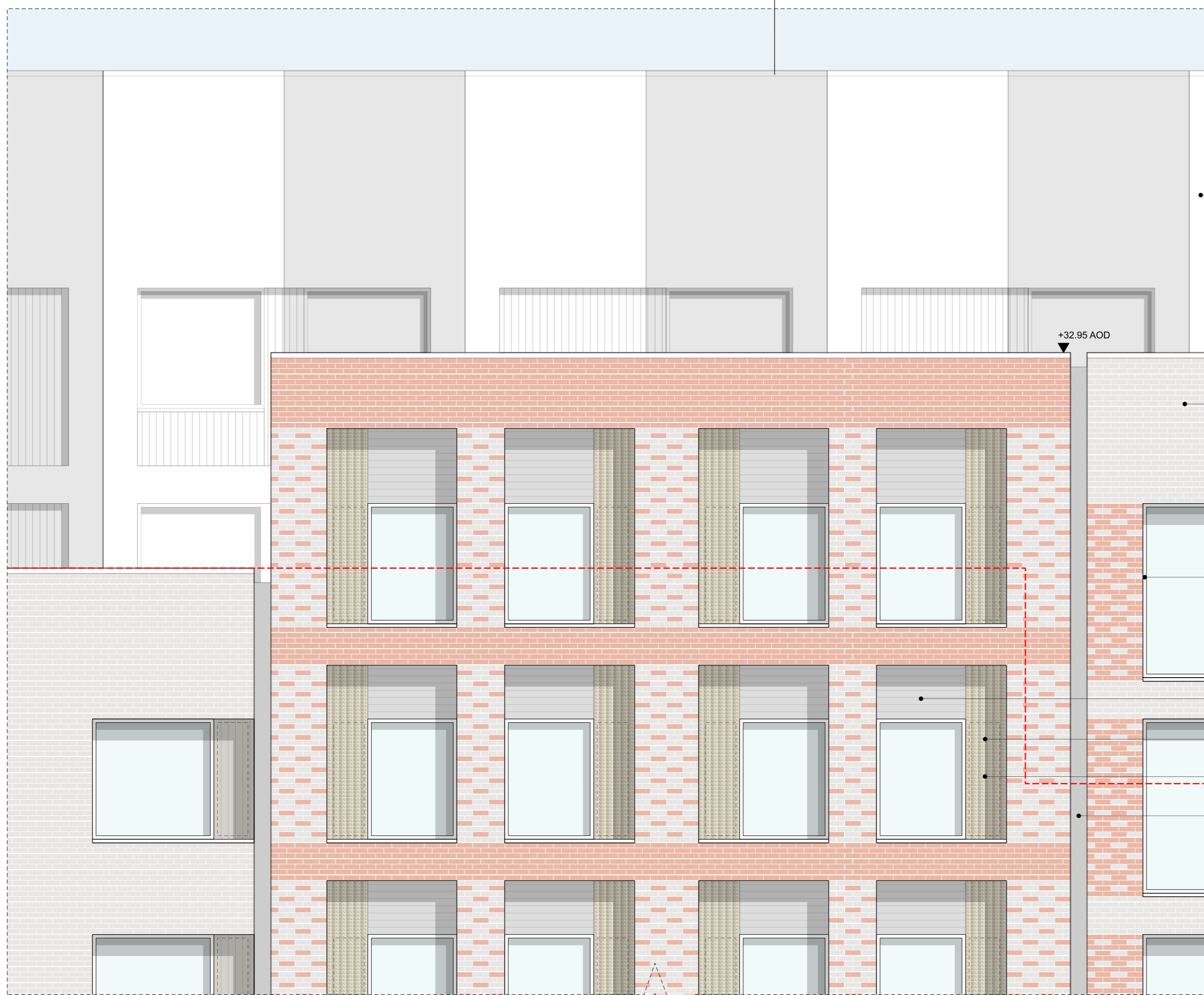


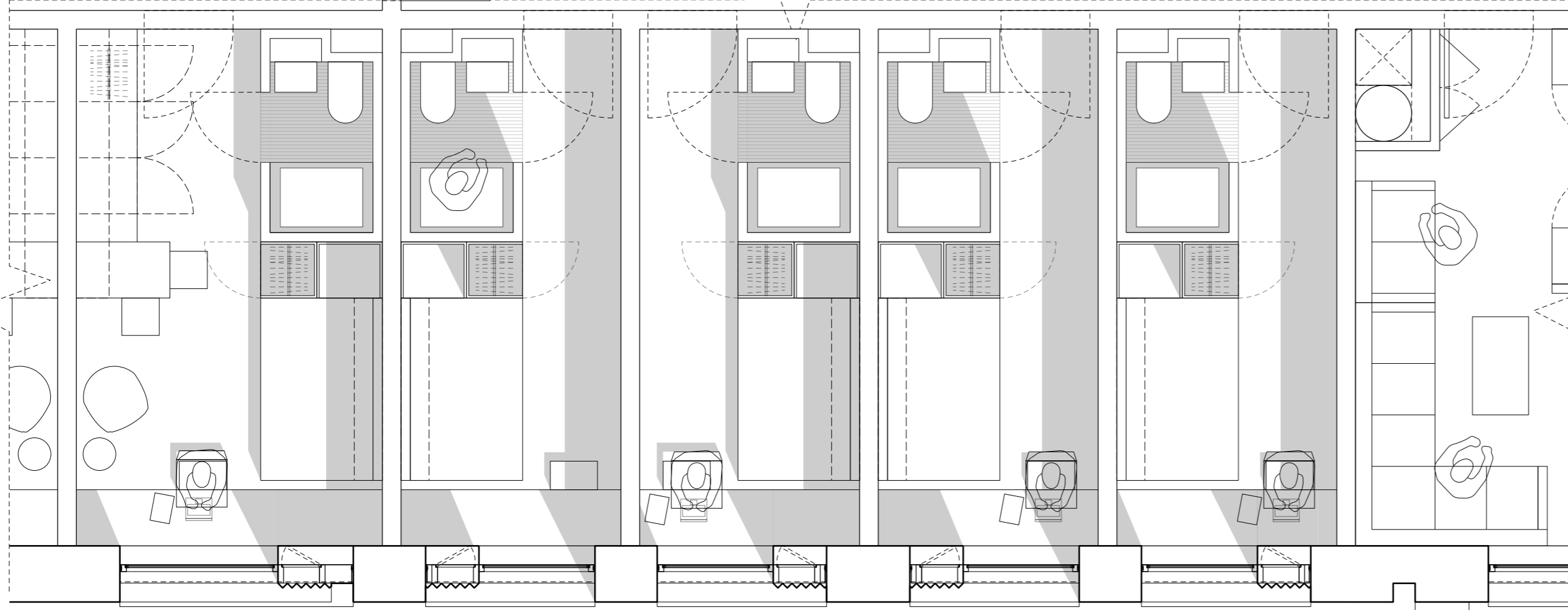
ELEVATION 01

SECTION 01

SECTION 01



PLAN 01



- ① SELECTED FACING BRICKWORK
 - ② PRECAST PARAPET COPING DETAIL
 - ③ PPC ALUMINIUM WINDOW SYSTEM
 - ④ MASONRY INFILL - SET BACK HALF BRICK (112mm) FROM EXTERNAL WALL
 - ⑤ PPC PROFILED METAL PANEL (HORIZONTAL)
 - ⑥ PPC PERFORATED PROFILED METAL PANEL (VERTICAL SCREEN)
 - ⑦ INWARD OPENING VENT PANEL BEHIND SCREEN
 - ⑧ RECESSED SHADOW GAP BETWEEN CONTRASTING BRICK TONES/MASSING VOLUMES
 - ⑨ PERFORATED 'HIT AND MISS' BRICKWORK SCREEN
 - ⑩ SIGNAGE ZONE
 - ⑪ PPC FRAMED COMMERCIAL CURTAIN WALL SYSTEM WITH SIGNAGE ZONE (PART M COMPLIANT)
 - ⑫ FULL BRICK (225mm) RELIEF FROM EXTERNAL WALL TO INFILL PANEL
 - ⑬ PRECAST SILL DETAIL
 - ⑭ PPC INSULATED LOUVRE PANEL
 - ⑮ BRICK SOFFIT
 - ⑯ DOUBLE HEADER ARCH DETAIL WITH BRICK SOFFIT
 - ⑰ METAL BALLSTRADING
 - ⑱ METAL COPING DETAIL
 - ⑲ PPC PROFILED METAL PANEL
- EXTERNAL MASONRY AND INFILL PANEL COLOUR AND TONE SUBJECT TO DETAILED DESIGN DEVELOPMENT. PLEASE REFER TO GA ELEVATIONS FOR INDICATIVE CODING AND COLOUR VARIATION.
- REFER TO LANDSCAPE ARCHITECT INFORMATION FOR PROPOSED LANDSCAPE LEVELS

notes

When this drawing is issued in uncontrolled CAD format it will be accompanied by a PDF version and is issued to enable the recipient to prepare their own documents / models / drawings for which they are solely responsible.

The recipient should report all drawing errors, omissions and discrepancies to the architect. All dimensions should be checked on site by the contractor and such dimensions shall be the contractor's responsibility.

Allford Hall Monaghan Morris Limited accepts no responsibility or liability for:
 -Any use of this drawing by parties other than the party for whom it was prepared or for purposes other than those for which it was prepared
 -Any alterations or additions to or discrepancies arising out of changes to the background information on which the drawings are based that was current at the time of issue, and which occur to that information after it has been issued by AHMM

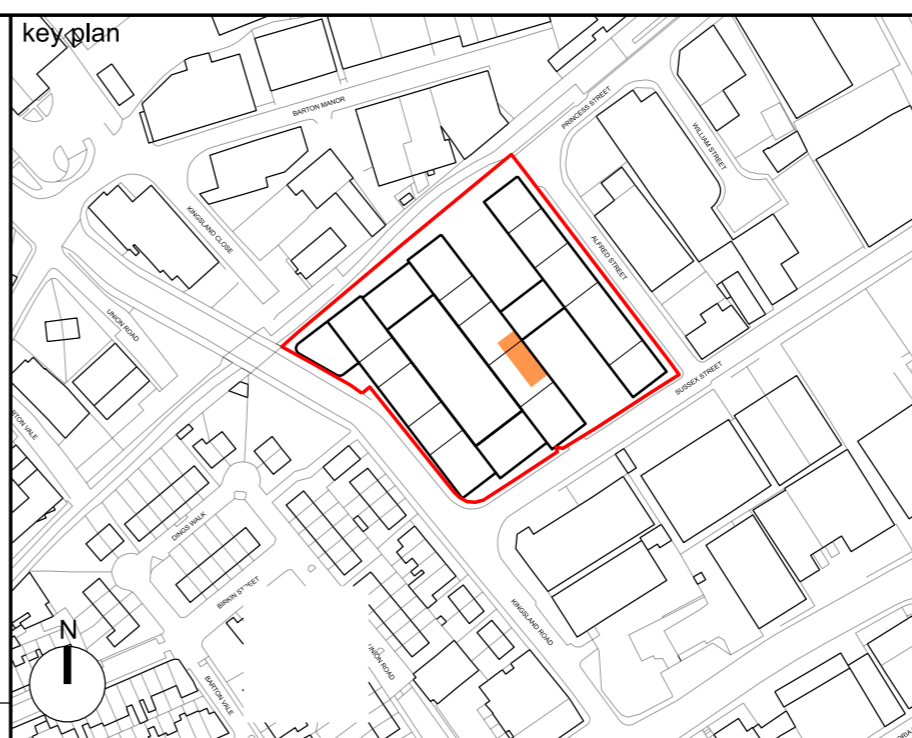
-Any loss or degradation of the information held in this drawing resulting from the translation from the original file format to any other file format or from the recipient's reading of it in any other programme or any version of the programme other than that which was used to prepare it

-The accuracy of survey information provided by others or for any costs, claims, proceedings and expenses arising out of reliance on such information

-Any scaling from this drawing other than by the local planning authority solely for the purposes of the planning application to which it relates

The drawing shows the general arrangement together with the nominal sizes of selected elements and components. The information shown indicates the design intent of the architect and is to be read in conjunction with the performance specification. The Contractor must include for all design development and coordination required to complete the works.

P02	17/11/23	UPDATED ISSUE FOR PLANNING
P01	31/03/23	PLANNING
Rev	Status	Date
		Description



ALLFORD HALL MONAGHAN MORRIS
 ARCHITECTS Ltd.
 MORELANDS, 5-23 OLD STREET LONDON EC1V 9HL
 TEL 020 7251 5261 FAX 020 7251 5123 WEB WWW.AHMM.CO.UK

client
DOMINUS BRISTOL LIMITED

project name
NEW HENRY STREET, BRISTOL

drawing title
**PROPOSED BAY STUDY - 01
 NEW HENRY STREET BAY STUDY**

drawn	checked	scale	status
BB	JR	1:50@A1 / 1:100@A3	PLANNING
project	originator	volume	level
22096	AHMM	ZZ	ZZ
	type	role	drawing no.
	DR	A	PL401

Allford Hall Monaghan Morris Limited