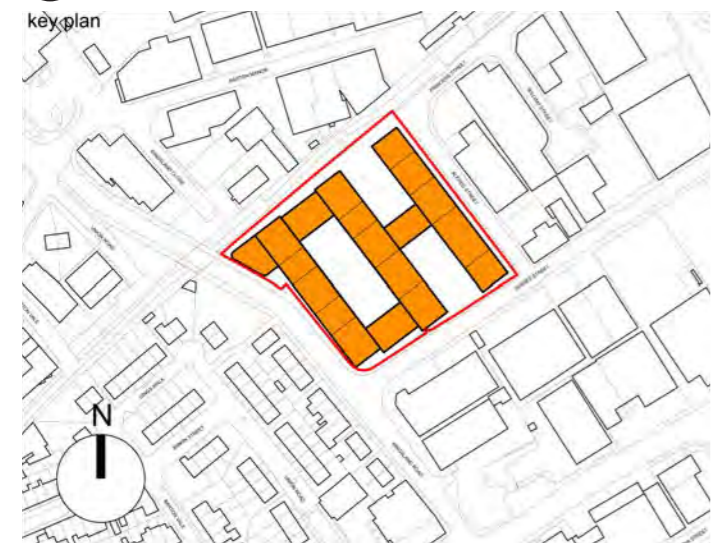


# 8.0 Proposal

## 8.1 Ground Floor Plan

- KEY**
- CORE
  - COMMON CORRIDOR
  - RECEPTION
  - MAKER SPACE (Class E(g)(iii))
  - FLEXIBLE COMMERCIAL SPACE (Class E(b-g))
  - SUPERMARKET / MAKER SPACE (Class E(g)(iii))
  - TELECOMS HUB (Class E(g)(iii)/ Class B8)
  - ANCILLARY COMMUNITY SPACE
  - BACK OF HOUSE
  - PBSA ENTRANCE
  - COMMERCIAL ENTRANCE
  - COMMUNITY SPACE ENTRANCE
  - BACK OF HOUSE ENTRANCE
  - EMERGENCY ESCAPE
  - BIKE STORE
  - BIN STORE

- 1 New Henry street public realm
- 2 Public realm adjacent to Railway path
- 3 Flexible community space
- 4 Retail space
- 5 Flexible employment/maker space
- 6 Student entrance and reception
- 7 External private amenity space
- 8 Internal amenity space
- 9 Class E(g)(iii)/Class B8 floorspace (Telecoms hub)



Key plan





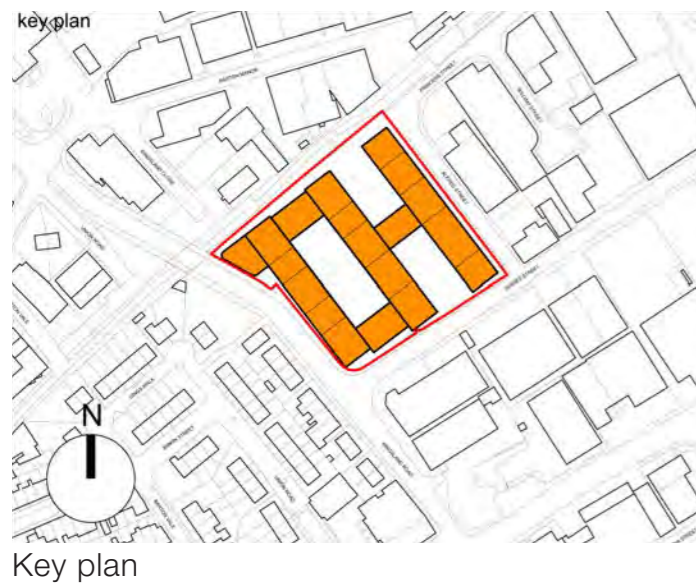
# 8.0 Proposal

## 8.2 First Floor Plan

KEY

Orange	STANDARD ENSUITE
Light Orange	CLUSTER COMMUNAL KITCHEN
Light Blue	STUDIO
Purple	TOWNHOUSE
Red	CORE
Pink	COMMON CORRIDOR
Yellow	STUDENT AMENITY

- ① Inhabited bridge - Internal student amenity
- ② "Town house" typology
- ③ Internal amenity space
- ④ External private amenity space
- ⑤ Biodiverse roof
- ⑥ Adaptable unit



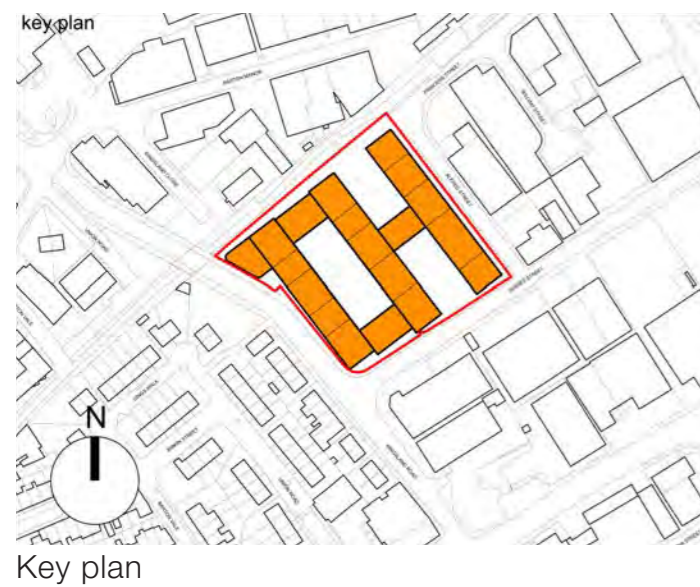


# 8.0 Proposal

## 8.3 Second & Third Floor Plan

- KEY
- STANDARD ENSUITE
  - CLUSTER COMMUNAL KITCHEN
  - STUDIO
  - TOWNHOUSE
  - CORE
  - COMMON CORRIDOR

- ① "Town house" typology
- ② Biodiverse roof
- ③ Adaptable unit



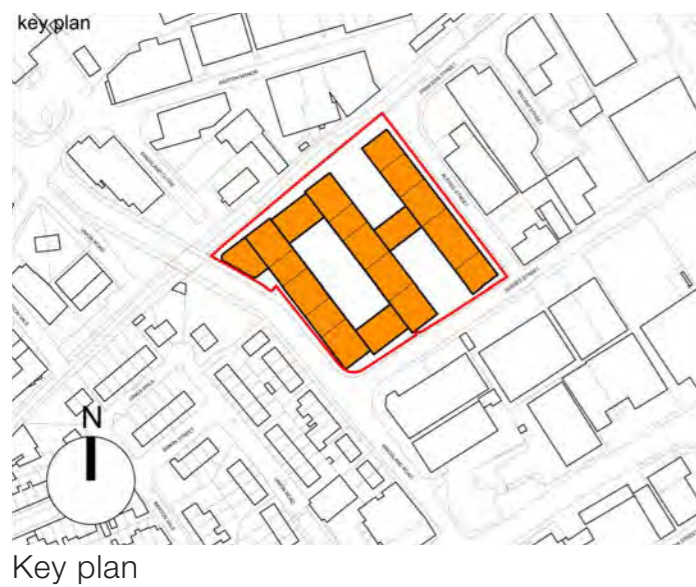


# 8.0 Proposal

## 8.4 Fourth Floor Plan

- KEY
- STANDARD ENSUITE
  - CLUSTER COMMUNAL KITCHEN
  - STUDIO
  - TOWNHOUSE
  - CORE
  - COMMON CORRIDOR

- ① "Town house" typology
- ② Biodiverse roof
- ③ Adaptable unit





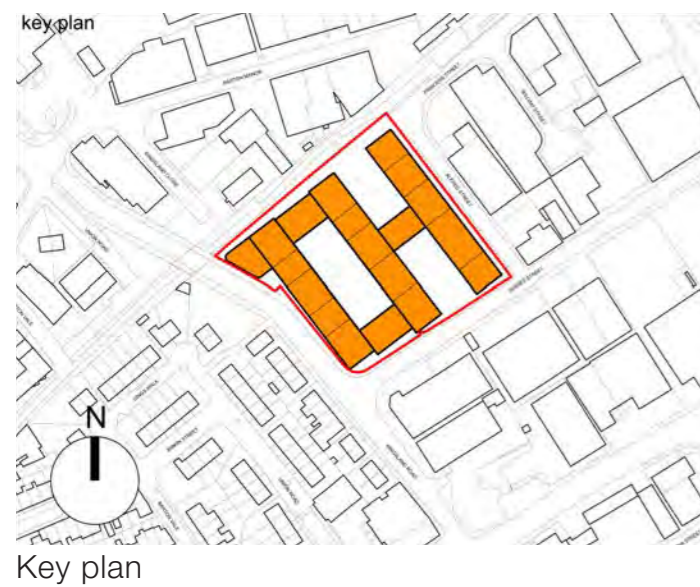
# 8.0 Proposal

## 8.5 Fifth Floor Plan

KEY

Orange	STANDARD ENSUITE
Light Orange	CLUSTER COMMUNAL KITCHEN
Blue	STUDIO
Red	CORE
Pink	COMMON CORRIDOR

- ① Biodiverse roof
- ② Pitched roof
- ③ Plant
- ④ Adaptable unit





# 8.0 Proposal

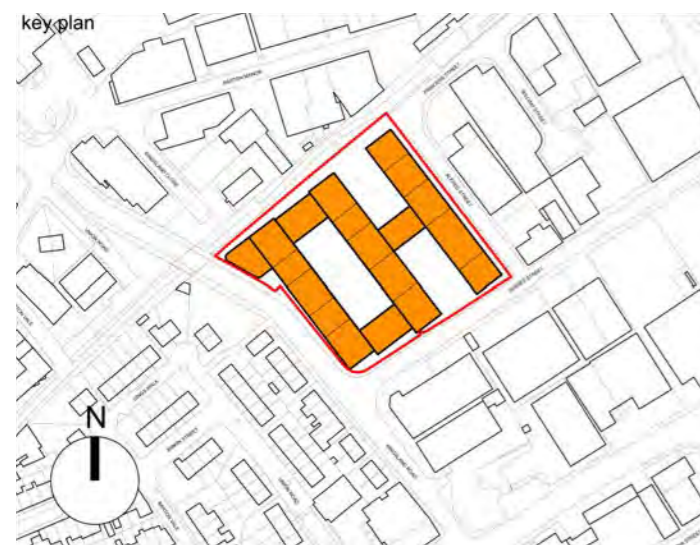
## 8.6 Sixth Floor Plan

### KEY

- STANDARD ENSUITE
- CLUSTER COMMUNAL KITCHEN
- STUDIO
- CORE
- COMMON CORRIDOR

1 Biodiverse roof

2 Pitched roof



Key plan



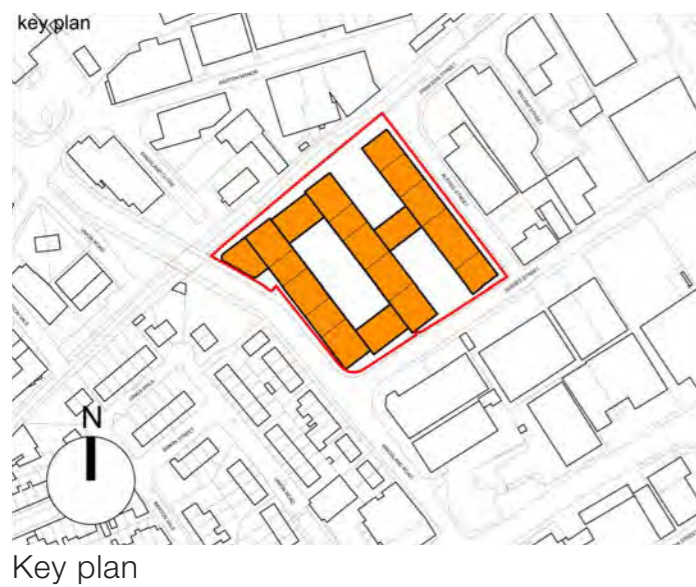


# 8.0 Proposal

## 8.7 Seventh Floor Plan

- KEY
- STANDARD ENSUITE
  - CLUSTER COMMUNAL KITCHEN
  - STUDIO
  - CORE
  - COMMON CORRIDOR

- 1 Biodiverse roof
- 2 Area for solar panels
- 3 Plant area with screening parapet
- 4 Pitched roof



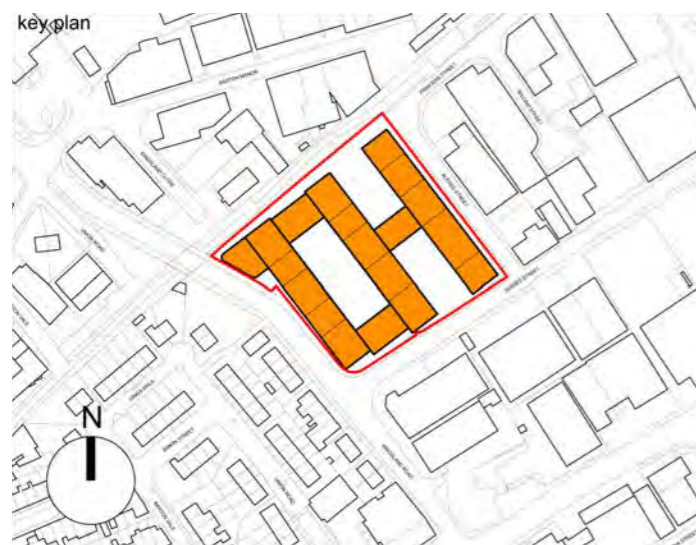


# 8.0 Proposal

## 8.8 Roof Plan

Key:

- ① Biodiverse roof
- ② Rooftop amenity garden
- ③ Area for solar panels
- ④ Plant area with screening parapet
- ⑤ Pitched roof



Key plan



# 8.0 Proposal

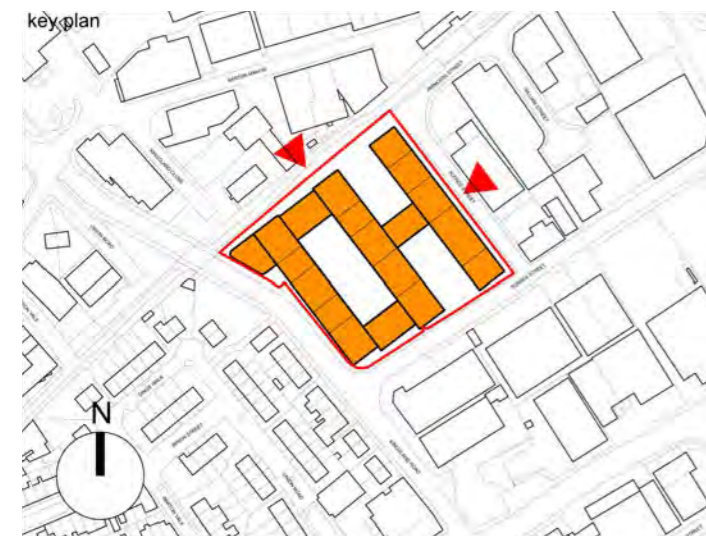
## 8.9 Elevations

Key:

- ① Inhabited bridge - Internal student amenity
- ② New Henry street public realm
- ③ “Town house” typology
- ④ Flexible community space
- ⑤ Retail space
- ⑥ Flexible employment/maker space
- ⑦ Public realm adjacent to cycle path
- ⑧ Student entrance and reception
- ⑨ Flexible amenity space



North West Elevation along the Railway Path



Key plan



North East Elevation along Alfred Street

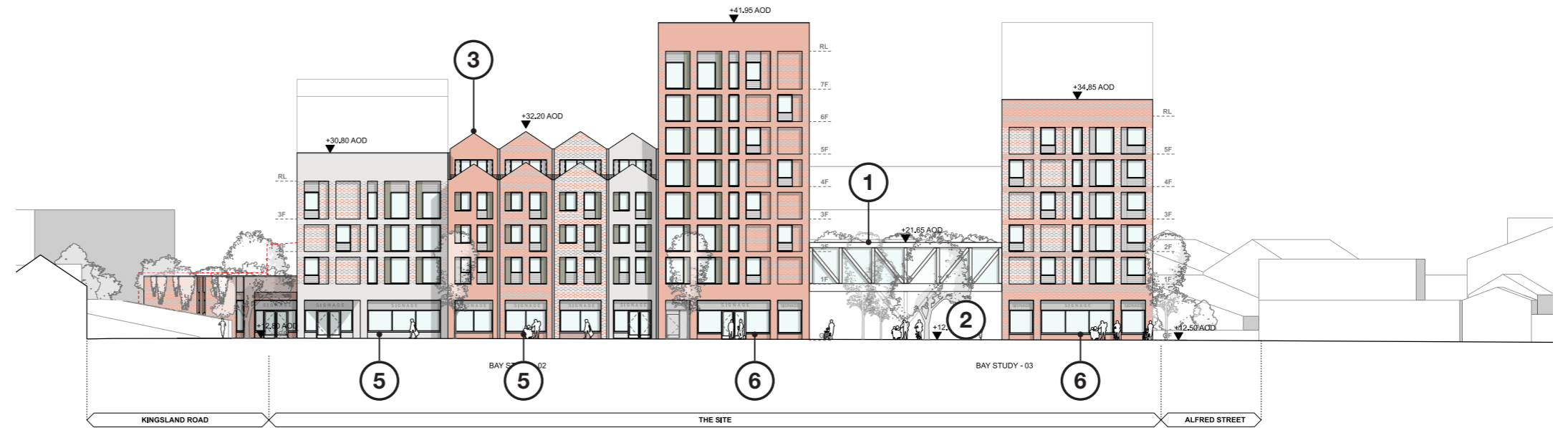


# 8.0 Proposal

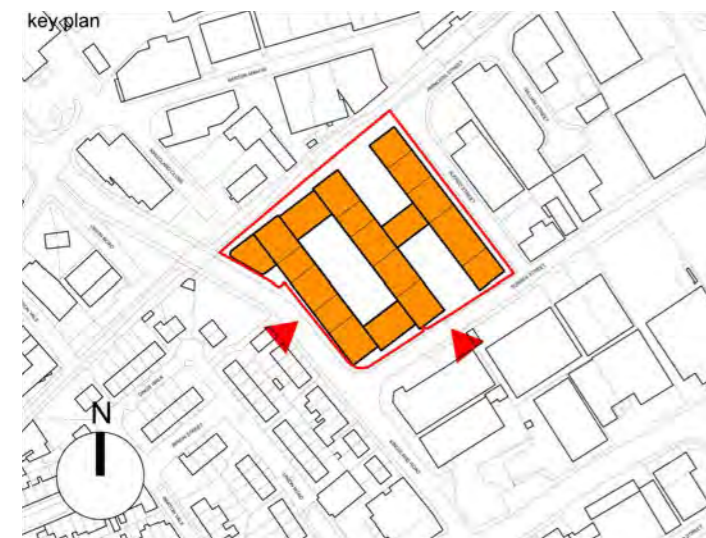
## 8.9 Elevations

Key:

- ① Inhabited bridge - Internal student amenity
- ② New Henry street public realm
- ③ “Town house” typology
- ④ Flexible community space
- ⑤ Retail space
- ⑥ Flexible employment/maker space
- ⑦ Public realm adjacent to cycle path
- ⑧ Student entrance and reception
- ⑨ Flexible amenity space



South East Elevation along the Sussex Street



Key plan



South West Elevation along Kingsland Road



# 8.0 Proposal

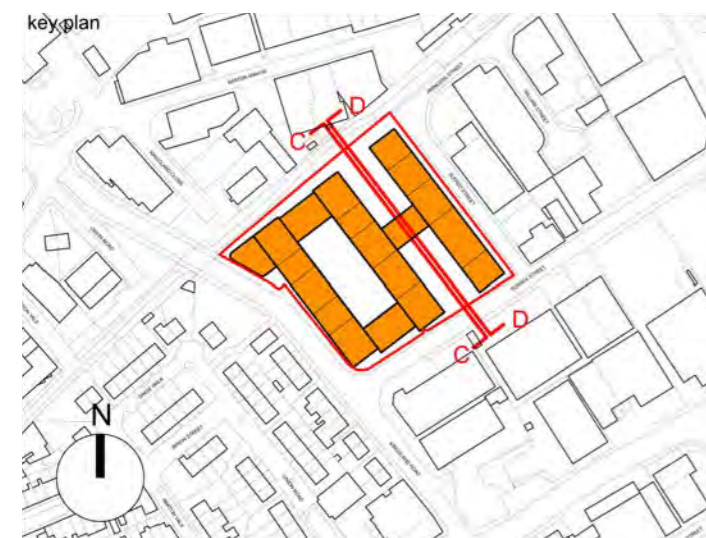
## 8.9 Elevations

Key:

- ① Inhabited bridge - Internal student amenity
- ② New Henry street public realm
- ③ “Town house” typology
- ④ Flexible community space
- ⑤ Retail space
- ⑥ Flexible employment/maker space
- ⑦ Public realm adjacent to cycle path
- ⑧ Student entrance and reception
- ⑨ Flexible amenity space



North East Elevation along New Henry Street



Key plan



South West Elevation along New Henry Street

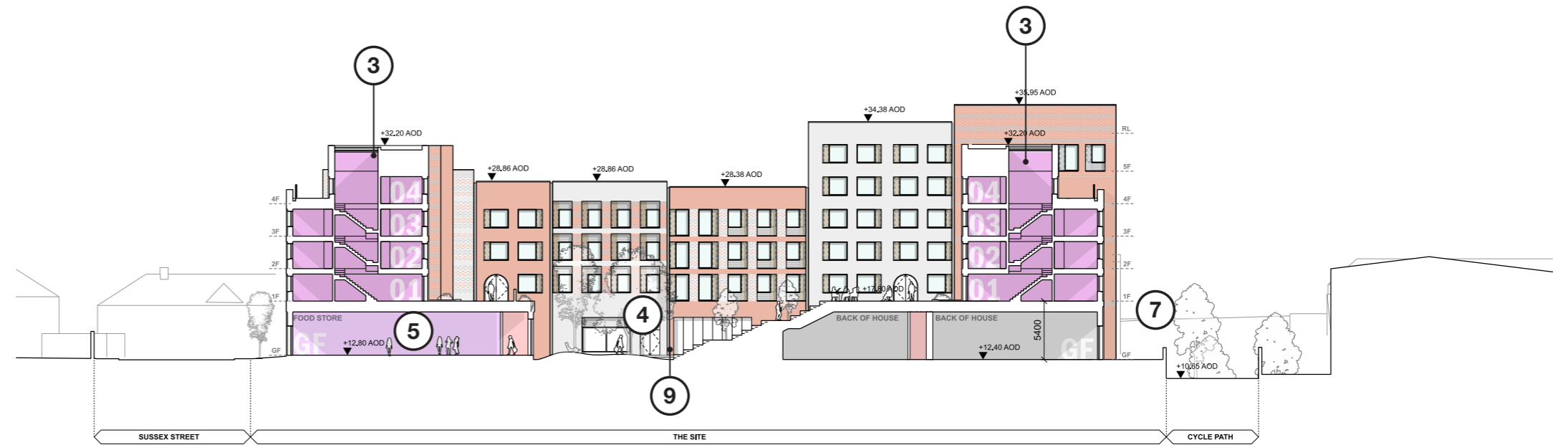


# 8.0 Proposal

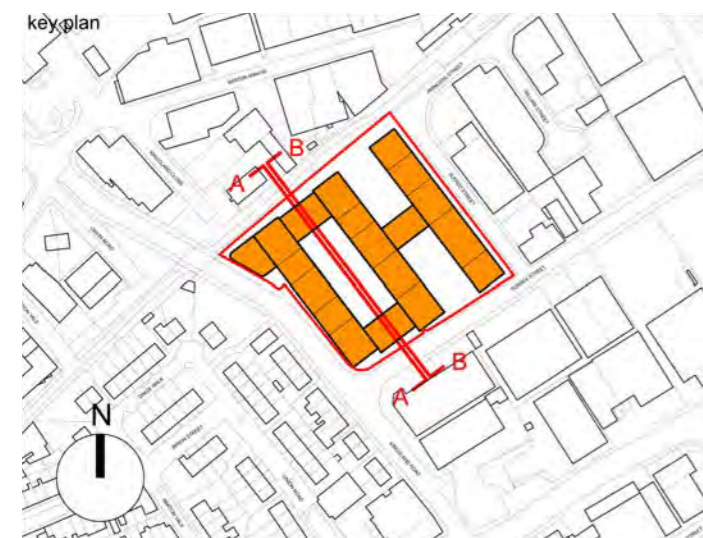
## 8.10 Sections

Key:

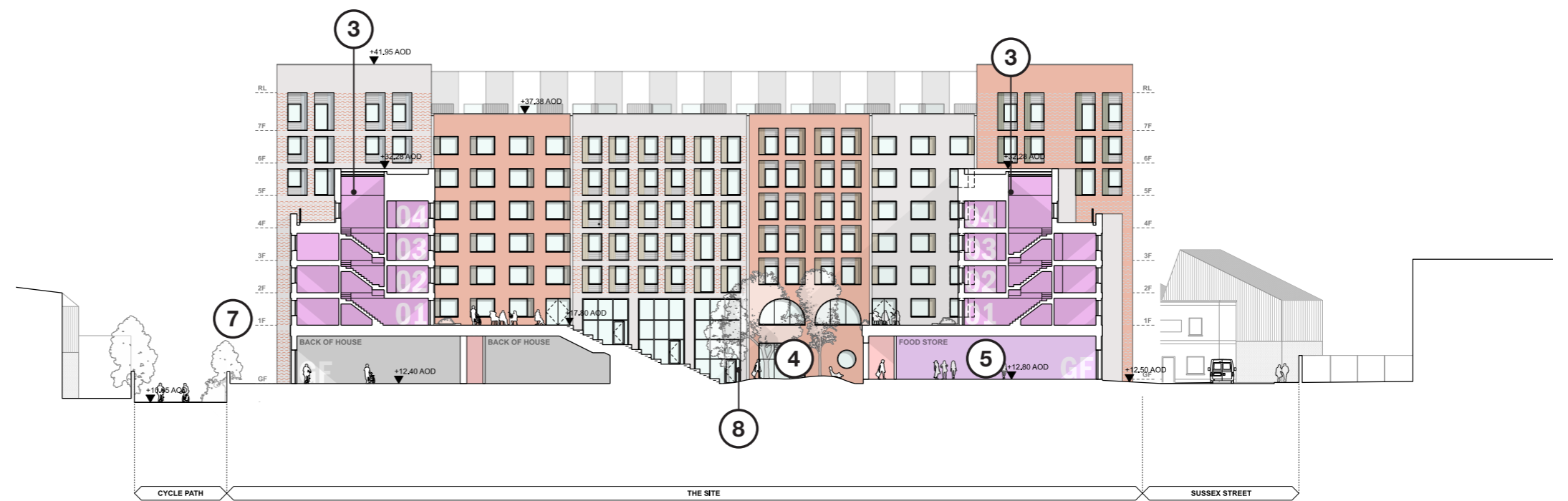
- ① Inhabited bridge - Internal student amenity
- ② New Henry street public realm
- ③ “Town house” typology
- ④ Flexible community space
- ⑤ Retail space
- ⑥ Flexible employment/maker space
- ⑦ Public realm adjacent to cycle path
- ⑧ Student entrance and reception
- ⑨ Flexible amenity space



Section A-A North East Section through the courtyard



Key plan



Section B-B South West Section through the courtyard

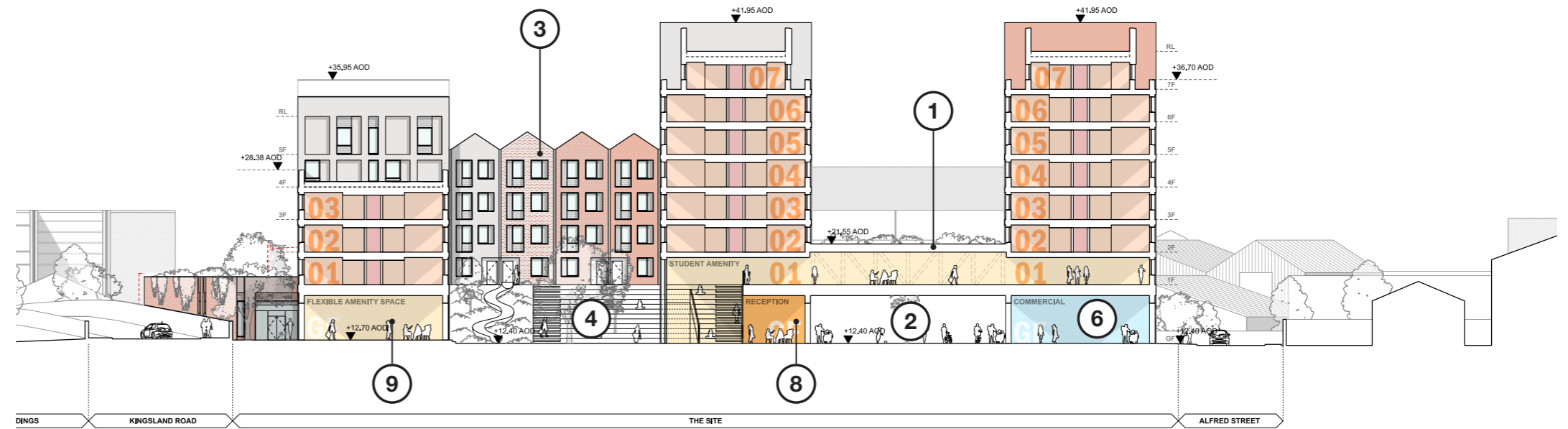


# 8.0 Proposal

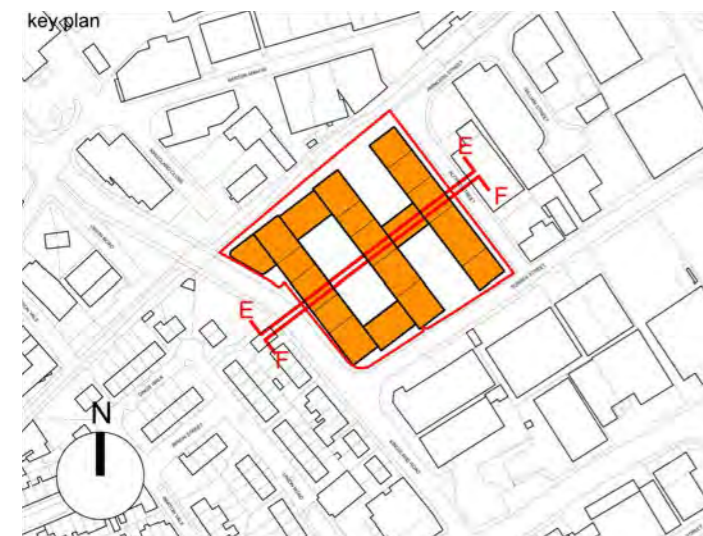
## 8.10 Sections

Key:

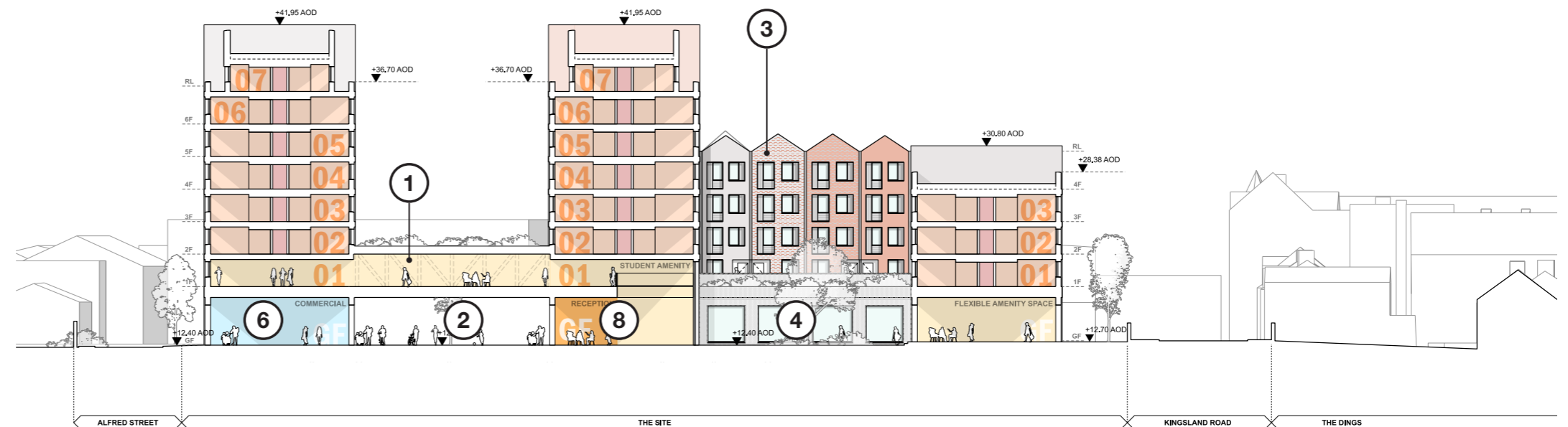
- ① Inhabited bridge - Internal student amenity
- ② New Henry street public realm
- ③ “Town house” typology
- ④ Flexible community space
- ⑤ Retail space
- ⑥ Flexible employment/maker space
- ⑦ Public realm adjacent to cycle path
- ⑧ Student entrance and reception
- ⑨ Flexible amenity space



Section E-E South East Section through the courtyard and New Henry Street



Key plan



Section E-E North West Section through the courtyard and New Henry Street

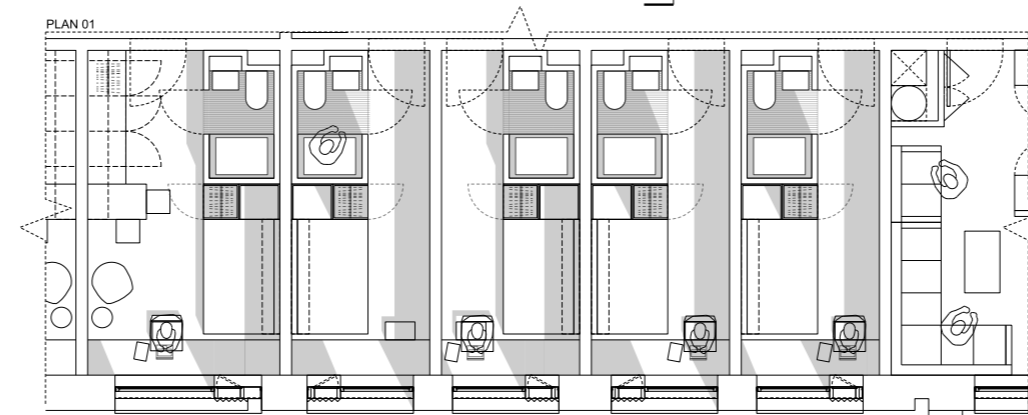
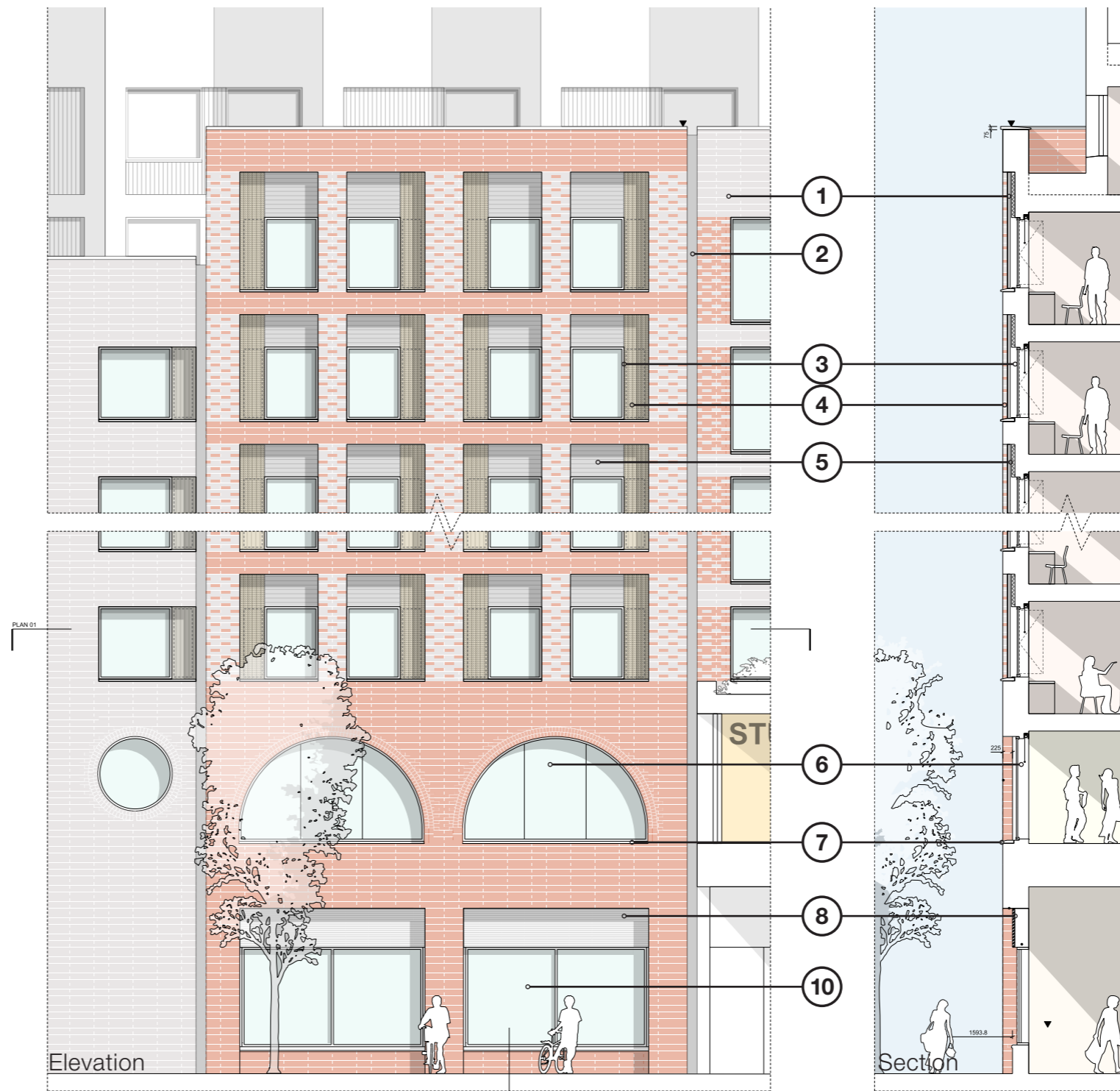


# 8.0 Proposal

## 8.11 Bay Studies

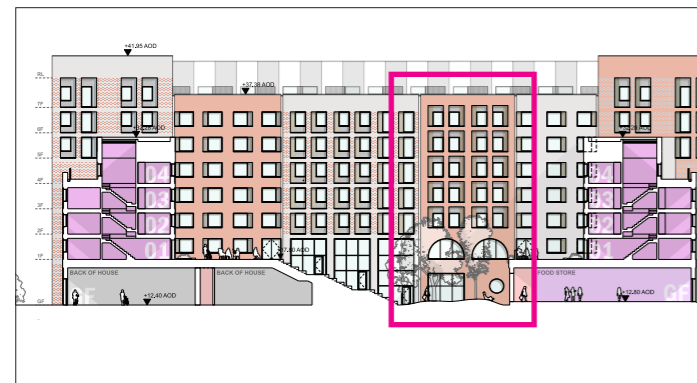
Key:

- ① Selected Facing Brickwork - colour/tone varies between blocks
- ② Recessed shadow gap between contrasting brick tones /massing volumes
- ③ PPC aluminium window system
- ④ PPC perforated profiled metal panel (Vertical) over operable vent panel
- ⑤ PPC Profiled metal panel (Horizontal)
- ⑥ Feature window system marking student social space with double header arch
- ⑦ Precast sill detail
- ⑧ PPC Insulated louvred ventilation panel
- ⑨ Perforated 'hit and miss' brick screen
- ⑩ PPC aluminium framed commercial curtain wall system



Plan

**NOTE:** Full brick (225mm) deep reveals from external wall to infill panel / window



Key - South West Elevation

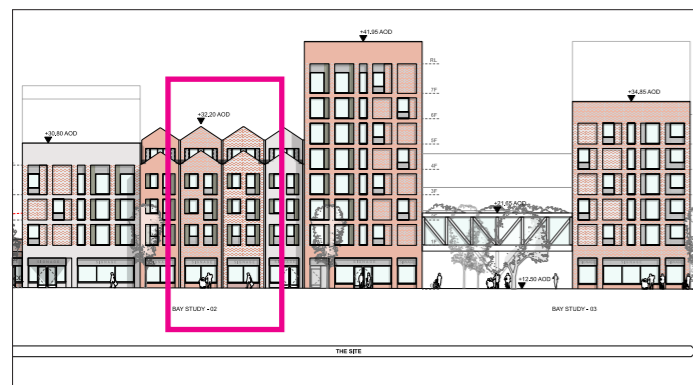


# 8.0 Proposal

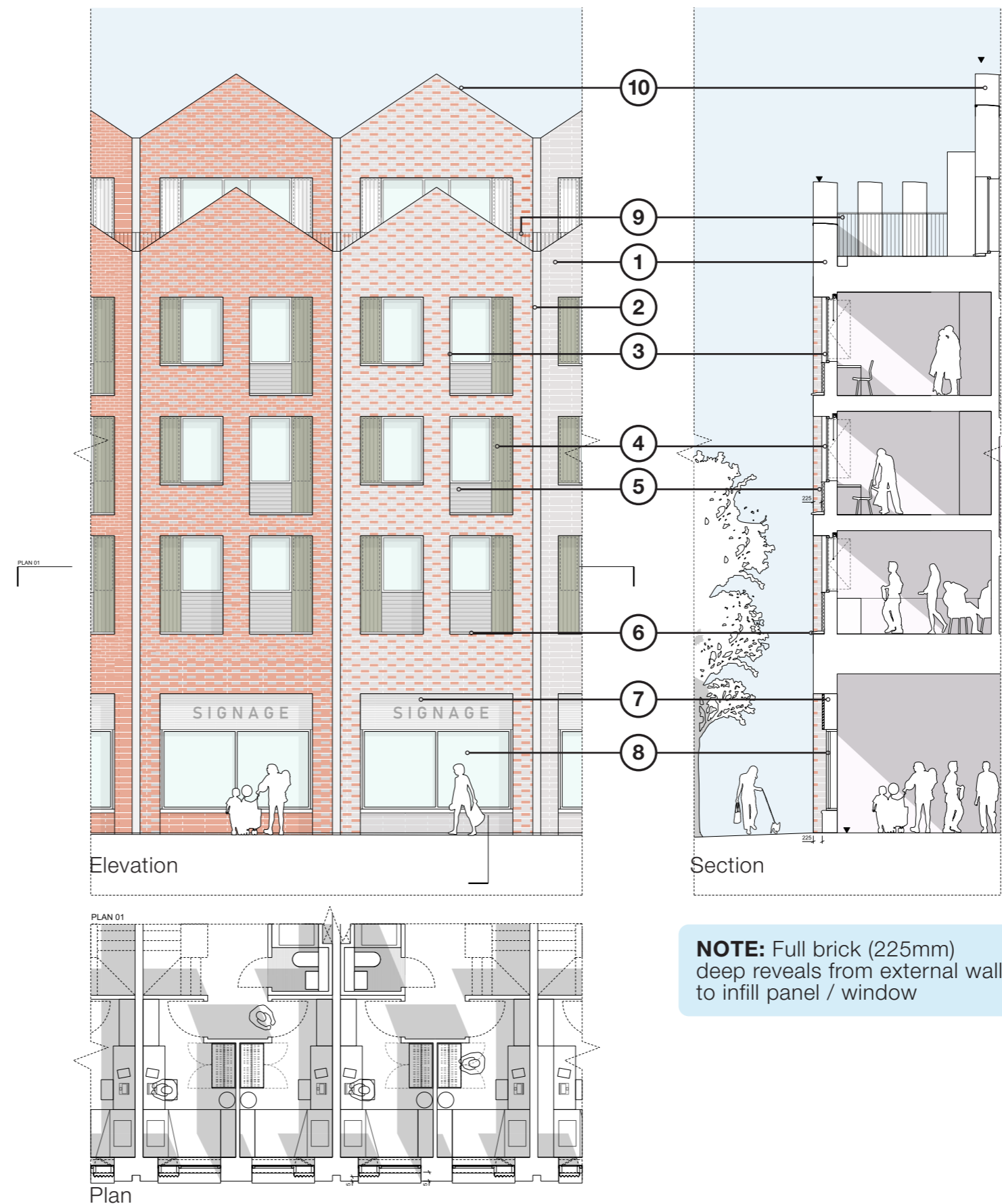
## 8.11 Bay Studies Proposed

Key:

- ① Selected Facing Brickwork - colour/ pattern varies between blocks
  - ② Recessed shadow gap between contrasting brick tones /massing volumes
  - ③ PPC aluminium window system
  - ④ PPC perforated profiled metal panel (Vertical) over operable vent panel
  - ⑤ PPC Profiled metal panel (Horizontal)
  - ⑥ Precast sill detail
  - ⑦ PPC Insulated louvred ventilation panel and signage zone
  - ⑧ PPC aluminium framed commercial curtain wall system
  - ⑨ Metal balustrade
  - ⑩ Slim-line metal coping detail
- Outline of previously submitted scheme



Key - South East Elevation



**NOTE:** Full brick (225mm) deep reveals from external wall to infill panel / window

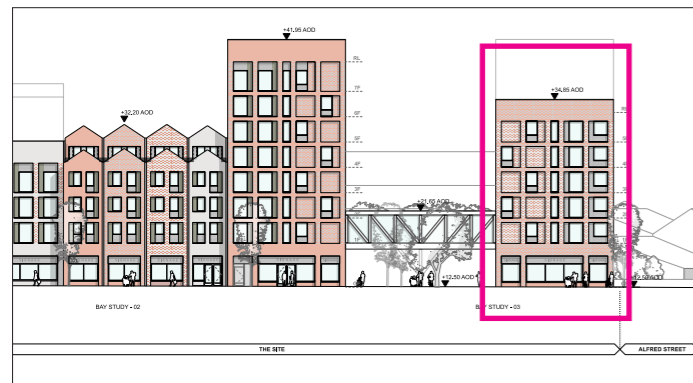


# 8.0 Proposal

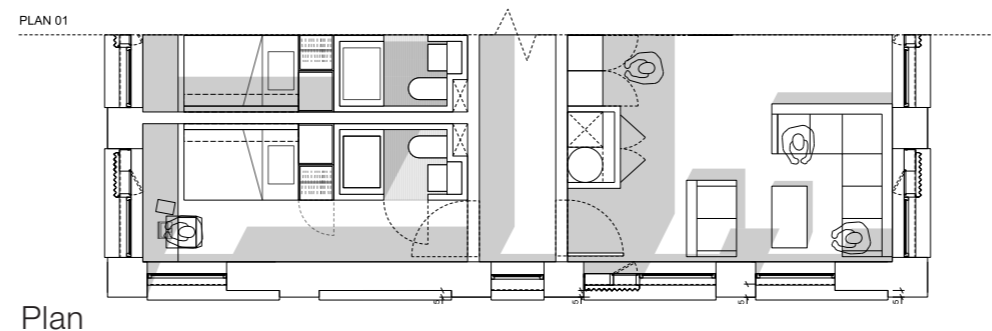
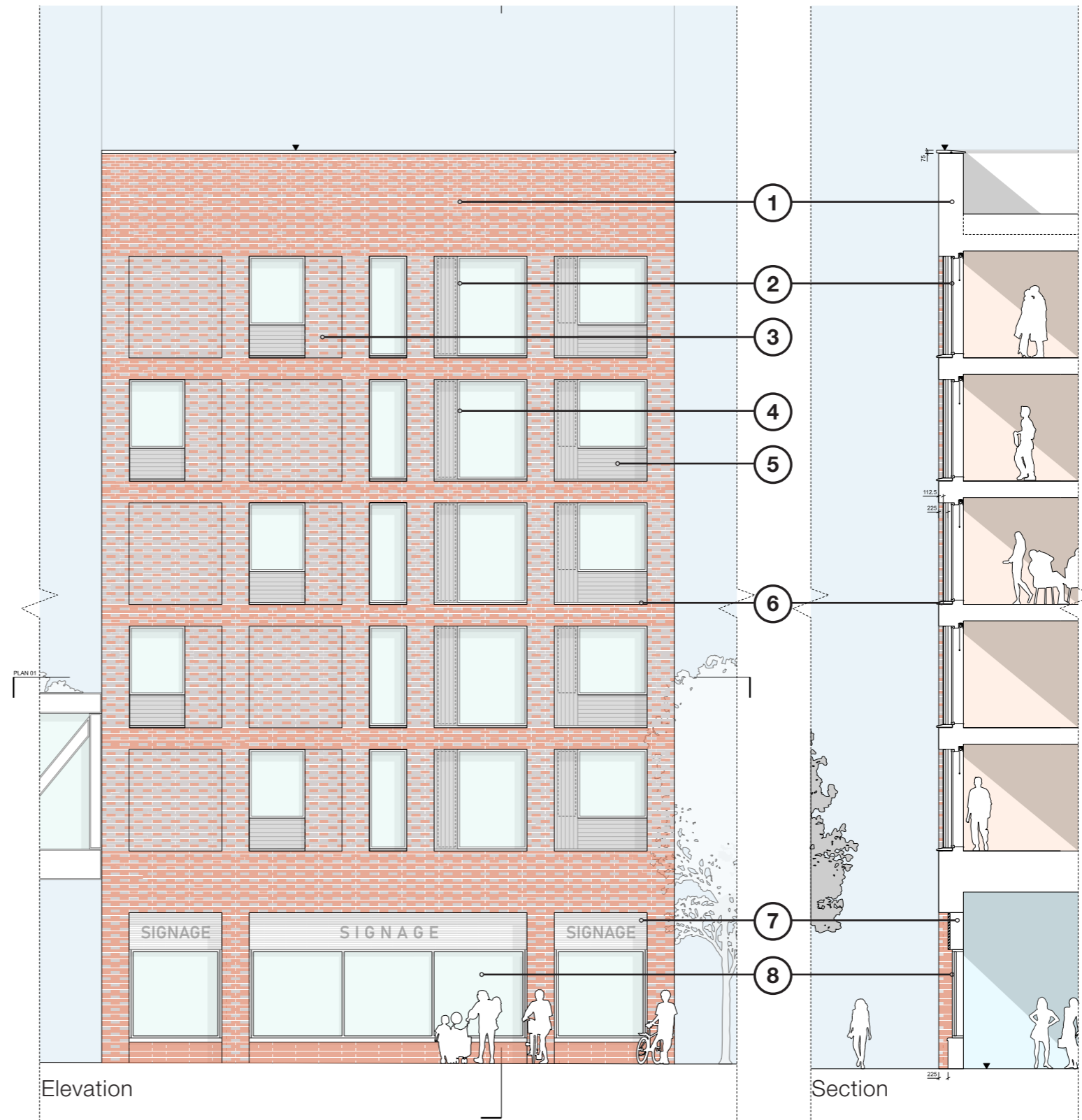
## 8.11 Bay Studies Proposed

Key:

- ① Selected Facing Brickwork - colour/ pattern varies between blocks
  - ② PPC aluminium window system
  - ③ Recessed brick infill panel - set back half brick (122mm) from external wall
  - ④ PPC perforated profiled metal panel (Vertical) over operable vent panel
  - ⑤ PPC Profiled metal panel (Horizontal)
  - ⑥ Precast sill detail
  - ⑦ PPC Insulated louvred ventilation panel and signage zone
  - ⑧ PPC aluminium framed commercial curtain wall system
- Outline of previously submitted scheme



Key - South East Elevation



Plan

**NOTE:** Full brick (225mm) deep reveals from external wall to infill panel / window



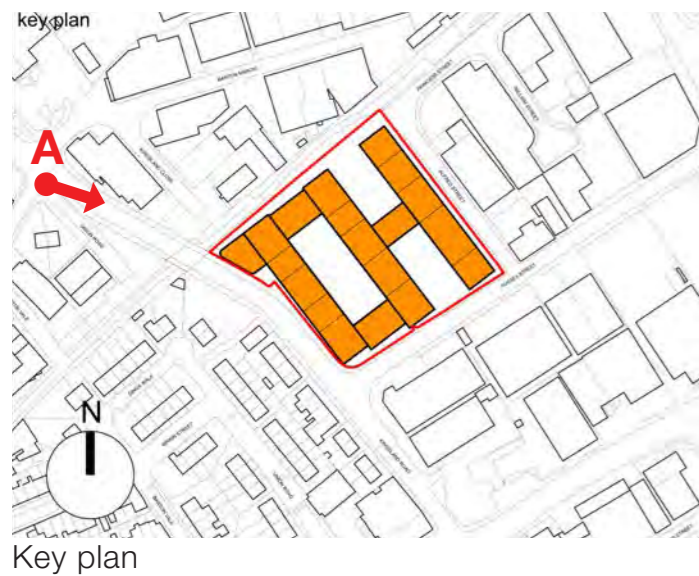




# 8.0 The Proposal

## 8.12 Illustrative Views

The adjacent images are a selection of sketch illustrative visuals of the proposals set within the existing built context.



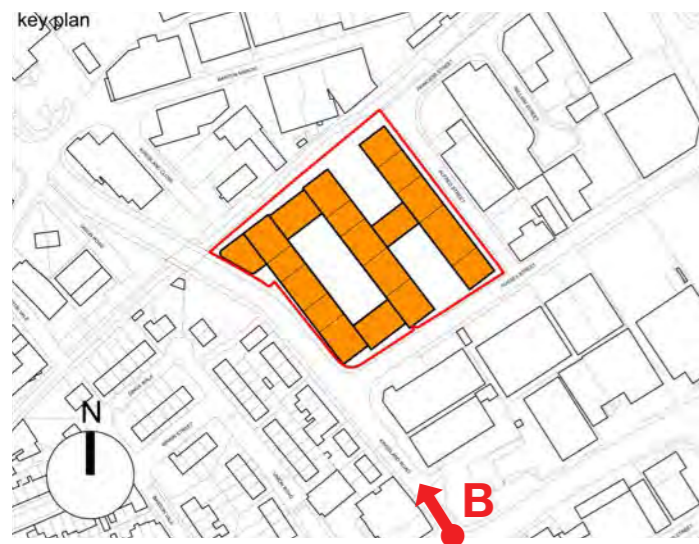
A: Illustrative views along Kingsland Road looking South



# 8.0 The Proposal

## 8.12 Illustrative Views

The adjacent images are a selection of sketch illustrative visuals of the proposals set within the existing built context.



Key plan



B: Illustrative views along Kingsland Road looking North