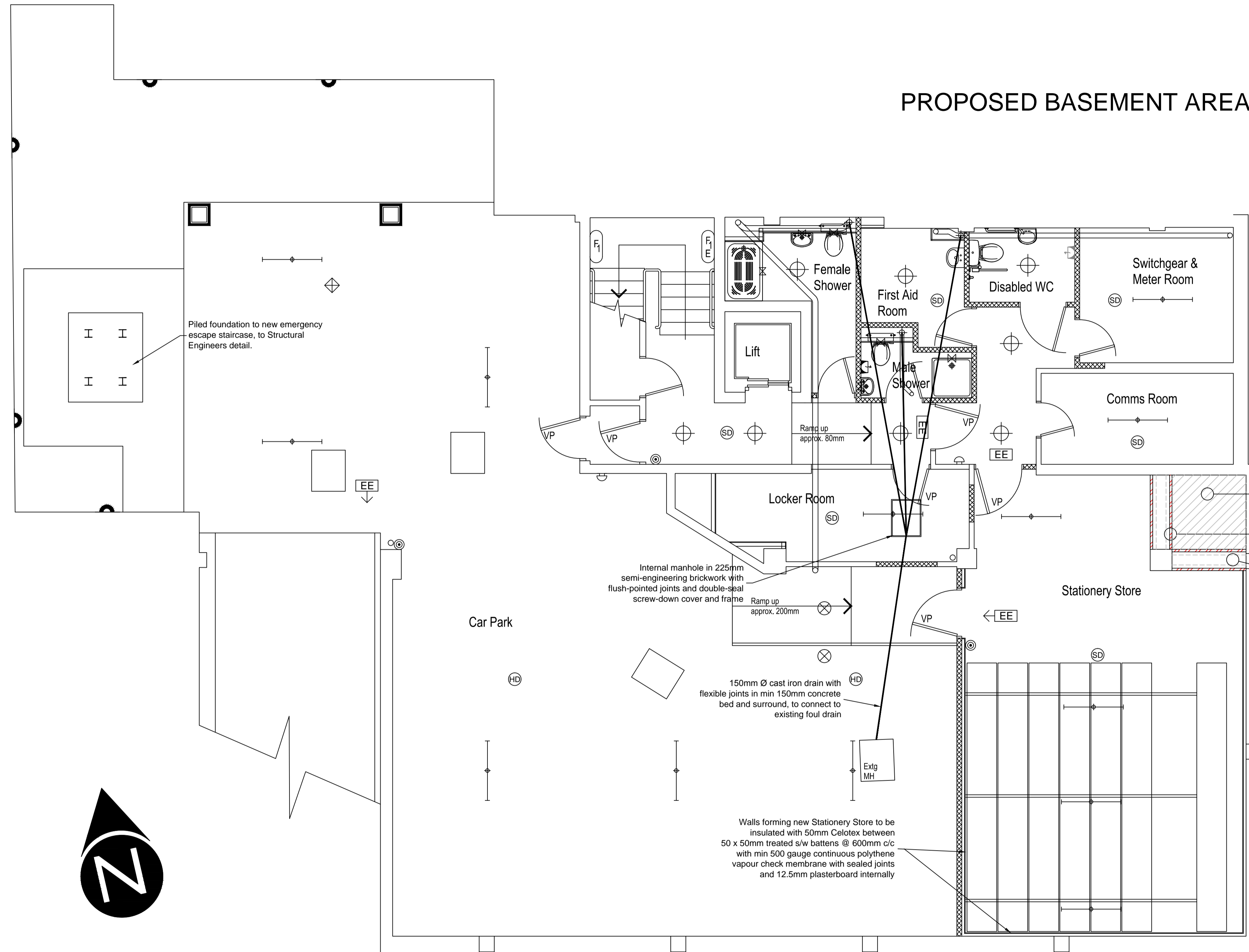


PROPOSED BASEMENT AREA



- Ceiling-mounted bulkhead lighting
- Fluorescent strip light
- External bulkhead lighting
- Circular bulkhead lighting
- Automatic smoke detector
- Automatic heat detector
- Directional emergency exit sign
- Break-glass alarm activator

- NEW WHEELCHAIR LIFT PLATFORM TO MATCH LEVEL OF EXTERIOR PATH
- FIRE RATED SOLID STUDWORK PARTITION
- STEEL BEAMS, HIGH LEVEL TO SUPPORT CUT SLAB AND MID LEVEL TO SUPPORT WHEELCHAIR PLATFORM, VOID BELOW
- REMOVE REDUNDANT GAS PIPE AND RE-ROUTE CEILING MOUNTED ELECTRICAL CABLES

REV	DESCRIPTION	DATE
1	NORTH ARROW ADDED	23/02/15

This drawing is a copyright and must not be reproduced or copied partially or wholly without written permission.
 Survey data by others

CLIENT: BPP PROFESSIONAL EDUCATION
 SITE: BPP HOUSE, GROVE AVENUE, QUEENS SQUARE BRISTOL BS1 4QY
 DESCRIPTION: PROPOSED BASEMENT LAYOUT
 Date: 17/12/14 Scale: 1:50 E6287B-PR Rev 1

Form House, York Way
 Lancaster Road
 High Wycombe
 Buckinghamshire
 HP12 3PY

Tel 01494 464686
 Fax 01494 464683
 www.formws.co.uk

