

22:1960 No.1 Castle Hill, Guildford**Supporting information for approval of details reserved by Condition 3**

No development shall take place until samples of the materials to be used in the construction of the external surfaces of the development hereby permitted have been submitted to and approved in writing by the Local Planning Authority. Development shall be carried out in accordance with the approved details.

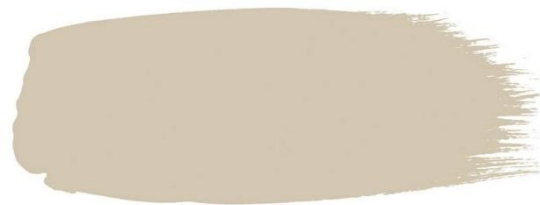
The following external materials are proposed:

Bricks: Existing brickwork being re-used wherever possible. On orangery side wall, new bricks will be required to raise height of wall. These will be Imperial Bricks and to be colour matched by specialist to existing. See image of existing wall below which new bricks are to colour matched to.



External Doors & fixed full height windows: Input joinery 'Cheriton' Traditional painted hardwood double glazed doors. Colour to be Little Green – Slaked Lime Deep 150 (see colour swatch below).

<https://www.inputjoinery.co.uk/products/traditional-french-doors>



Please note that all the existing windows on rear elevation only are also set to repainted the above colour, to match new orangery and double doors.



New front Door and existing timber surround: New doors to be designed to match the below door design but doors and existing timber surround to be painted in Little Greene Pompeian Ash Little Greene Pompeian Ash (see colour swatch below)



Roof Covering for Porch & Orangery: Code 5 Lead Roofing to LSA Handbook Details.



Driveway Covering: Resin Bond covering – Colour and supplier TBC. Example image shown below of a resin bonded driveway.





MitchellEvans

Pitched Rooflight (south side): To be standard velux recessed rooflights on existing slate roof – 1 on each side elevation. Please see attached technical details.



Pitched rooflight (north side):
Roof maker luxlite fixed rooflight. Please see attached technical details.



Orangery rooflight – Glazing vision flushglaze rooflight. Please see attached technical data sheet.





Technical Data Sheet

GLAZING VISION

Flushglaze Rooflight

402-TDS-UK-001 – v1.5 – 04 Apr 2023



Name: Flushglaze
Type: Fixed flat rooflight

Description:

The Flushglaze is a fixed product designed to provide maximum daylight with minimum visible internal structure. It is available as a standard product, a fire-rated product and as a walk-on product.

A variety of optional extras such as special colour and easy clean coating are available.

This product is robust and long-lasting, boasting excellent thermal performance and air tightness.

Intended Use: Fixed rooflight to provide natural daylight and weather resistance. The product is fixed and does not open. Only walk-on units may be walked on, and only fire-rated units are certified as such.

External Weathered Upstand Dimensions of Standard Flushglaze Unit:	Min Span:	400 mm	Max Span:	4313 mm
	Min Width:	400 mm	Max Width:	4313 mm
	Min Upstand Pitch:	3°	Max Upstand Pitch:	70°
	<i>Glazing Vision recommends a pitch of at least 5° for standard units.</i>			

External Weathered Upstand Dimensions of Walk-On Flushglaze Unit:	Min Span:	400 mm	Max Span:	4313 mm
	Min Width:	400 mm	Max Width:	4313 mm
	Min Upstand Pitch:	1°	Max Upstand Pitch:	70°
	<i>Glazing Vision recommends a pitch of 1° for walk-on units.</i>			

External Weathered Upstand Dimensions of Fire-Rated Flushglaze Unit:	Min Span:	400 mm	Max Span:	1500 mm
	Min Width:	400 mm	Max Width:	1500 mm
	Min Upstand Pitch:	3°	Max Upstand Pitch:	70°
	<i>Glazing Vision recommends a pitch of at least 5° for fire-rated units.</i>			

Note that the minimum and maximum span, width and pitch are dependent on various factors, your technical sales advisor will be happy to advise on these. Further information on upstand requirements and product dimensions can be found on our website or by contacting your technical sales advisor.

Glazing: A wide variety of glazing specifications are available for this product. Your technical sales advisor will be happy to answer any questions regarding specific glass specifications or glazing performance requirements. Otherwise, quotes include suitable and cost effective glazing proposals.

Unless otherwise stated, the default loadings used for specifying walk-on glass will be a distributed load of 1.50 kN/m² and a concentrated load of 2.00 kN per a 50 mm x 50 mm square area (standard domestic loadings). A variety of anti-slip finishes are available for walk-on glass.

Standard Colours: Qualicoat approved RAL 7015 slate grey outer, no inner framework is visible.

Performance and Weathertightness:

The aluminium frame of the product employs a dual hardness EPDM insulating gasket to thermally isolate the frame from the interior of the building. Structural integrity is assured through the use of finite element analysis (FEA) and testing.

U-values are calculated for each product and will be supplied in our quote. Further information and specific performance details can be obtained from your technical sales advisor.

Standard and walk-on products are sealed to the upstand using silicone. Fire-rated products are sealed to the upstand using ceramic fire-rated tape and fire-rated silicone. The product is fixed in place with structural fixings which are either concealed by a clip-on cover or with lead (or other material) flashing (wall abutted units) leaving a sleek external finish.

The standard Flushglaze unit has been thoroughly tested and achieved the following classification results:

Size: 2000 mm span x 2500 mm width Pitch: 0°

Test	Standard	Classification/Declared Value
Air permeability	EN 12207	Class 4 ±600 Pa
Watertightness	EN 12208	Class 9A 600 Pa

Security and Certification for Standard and Walk-On Flushglaze Units:

This product is designed with security as a priority. This product is tested to LPS2081 Issue 1:2015. It is approved by the Loss Prevention Certification Board (Cert/LPCB ref: 1347a) and Secured by Design:

Secure (Security Rating A)

The inner pane must be at least 8.8 mm PVB laminated glass (two 4 mm thick panes separated by an 0.8 mm thick PVB interlayer).

Secure+ (Security Rating B)

The inner pane must be at least 9.5 mm ionomer laminated glass (two 4 mm thick panes separated by a 1.5 mm thick ionomer interlayer).

Security and Certification for Fire-Rated Flushglaze Units:

This product has been tested and certified for 30 minutes integrity and 30 minutes insulation. Tests were by Building Research Establishment (BRE) Watford (13 Nov 2007) and approved by International Fire Consultants. The BRE test report is number 239658 and the field of application report is number IFCA/08008.

Security and Certification for All Flushglaze Units:

This product has been independently performance tested by the British Board of Agrément (certificate number 12/4895). To achieve certification, it underwent a rigorous testing regime that included weathertightness, security, thermal performance, structural integrity and durability of paints and sealants.

Optional Extras:

The following optional extras are available for this standard product at additional cost:

Easy Clean Coating:

A coating applied to the external face of the glass that facilitates water run-off. Helps the glass stay cleaner for longer and makes cleaning easier.

Special Colour:

This product has a single colour as standard. This can be swapped for a special colour.

Upstand Top Trim:

Cover designed to mask the top of upstands which may be visible through glass when viewed from above. Includes detail to recess standard plasterboard.

Wall Abutments:

The product can be fixed and weathered to a wall rather than an upstand on up to three sides. This option is not available on the Fire-Rated Flushglaze.

EPDM:

A flexible membrane to provide additional waterproofing between the upstand and the product. This option is only available for the Walk-On Flushglaze.

A suite of sales drawings is available.

Bespoke options may be available upon request but may incur additional design fees – contact your technical sales advisor for more information.

GLAZINGVISION



www.glazingvision.co.uk



+44 (0)1379 658300



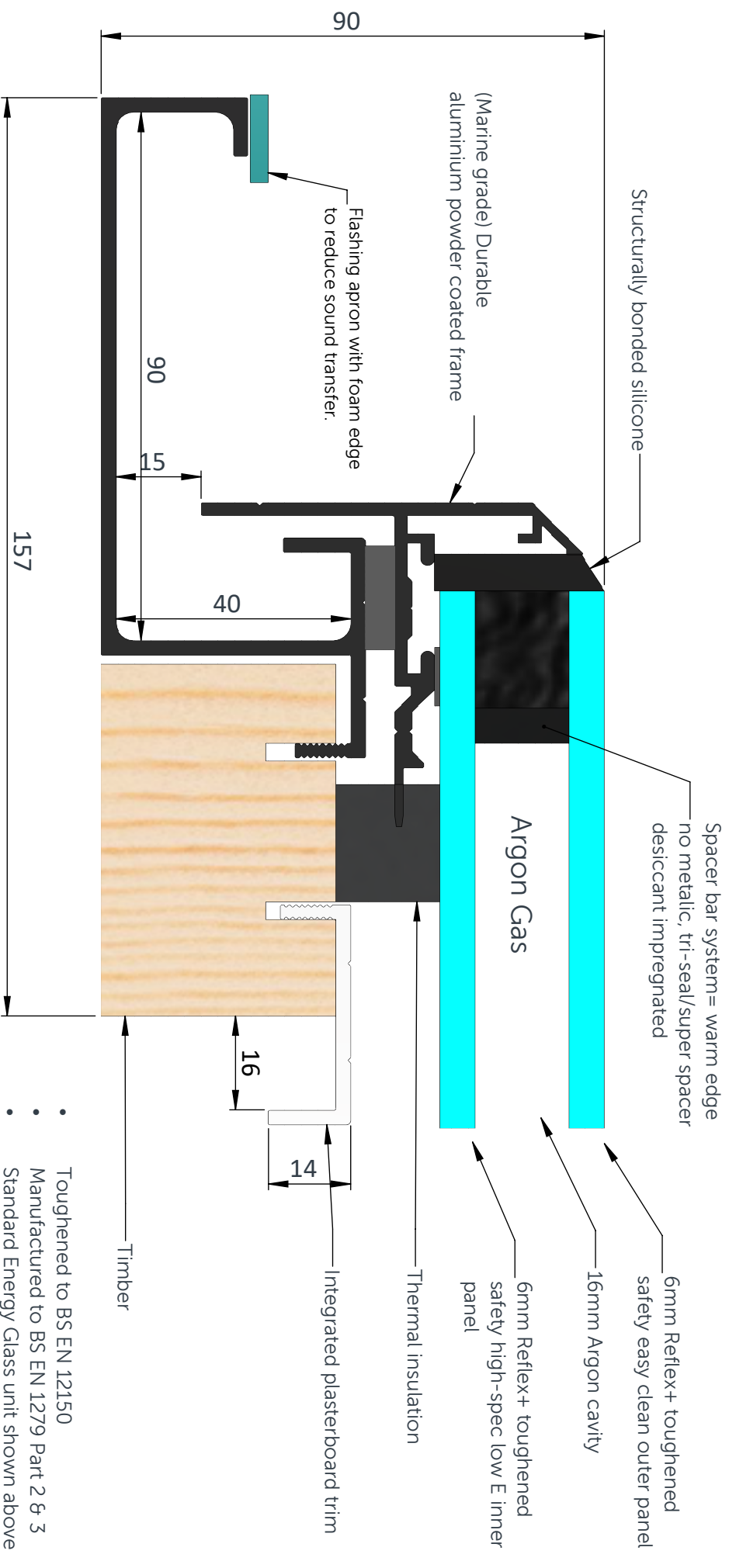
technicalsales@glazingvision.co.uk

ROOF MAKER

WORLD CLASS ROOFLIGHTS

Call us: 0116 269 6297
Mon-Fri 9-5pm

FIXED LUXLITE™: STANDARD PRODUCT SPECIFICATION (Double Glazed)



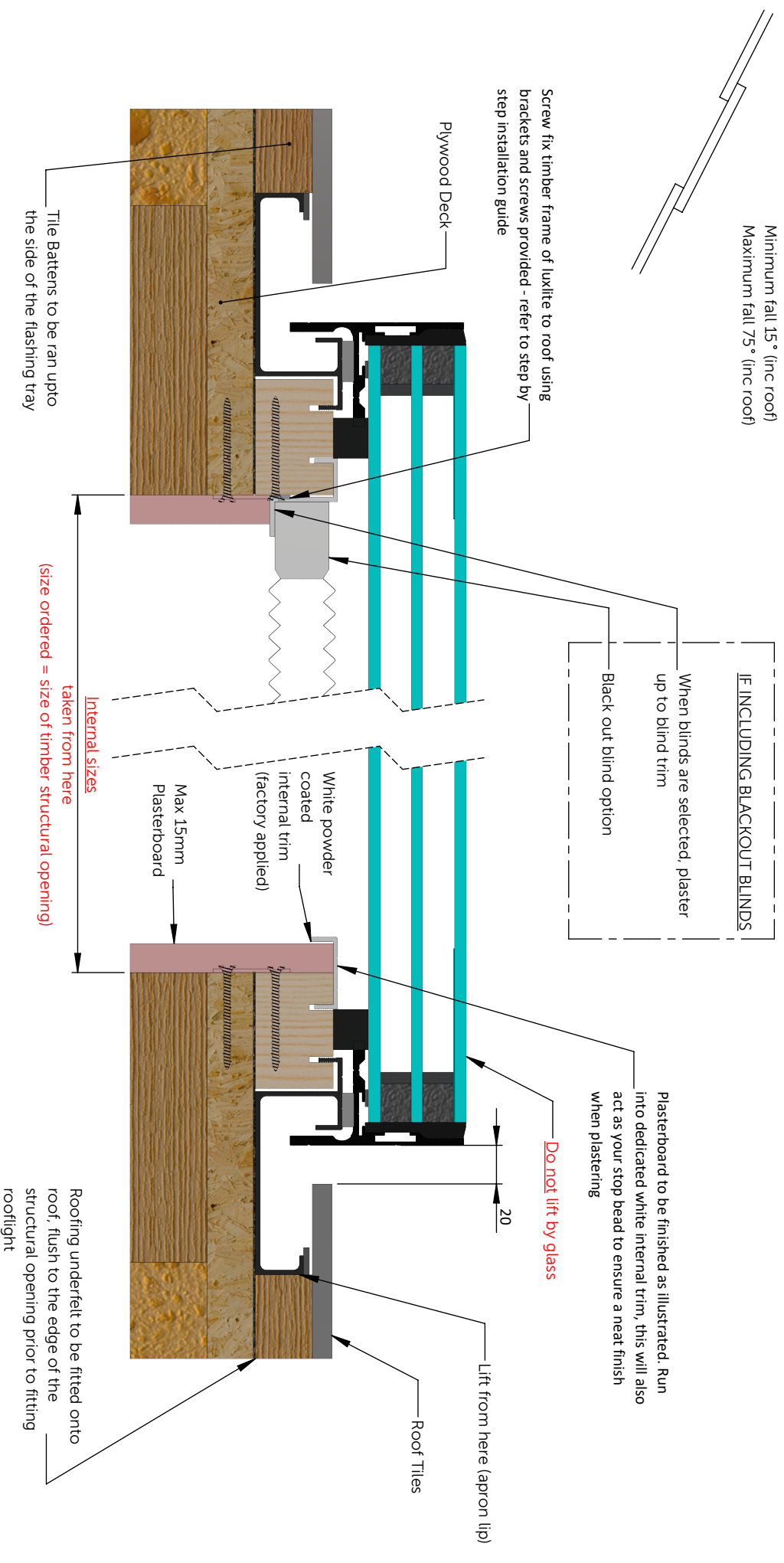
- Toughened to BS EN 12150
- Manufactured to BS EN 1279 Part 2 & 3
- Standard Energy Glass unit shown above

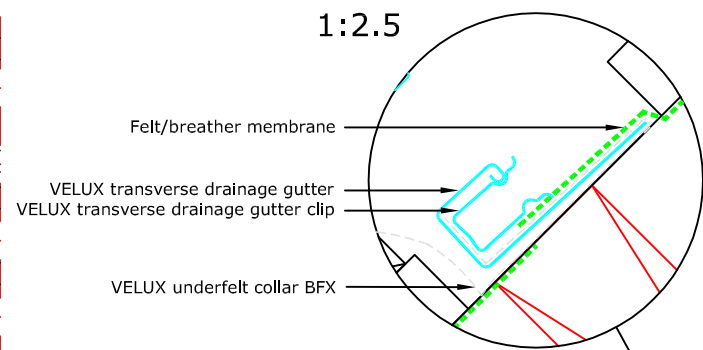
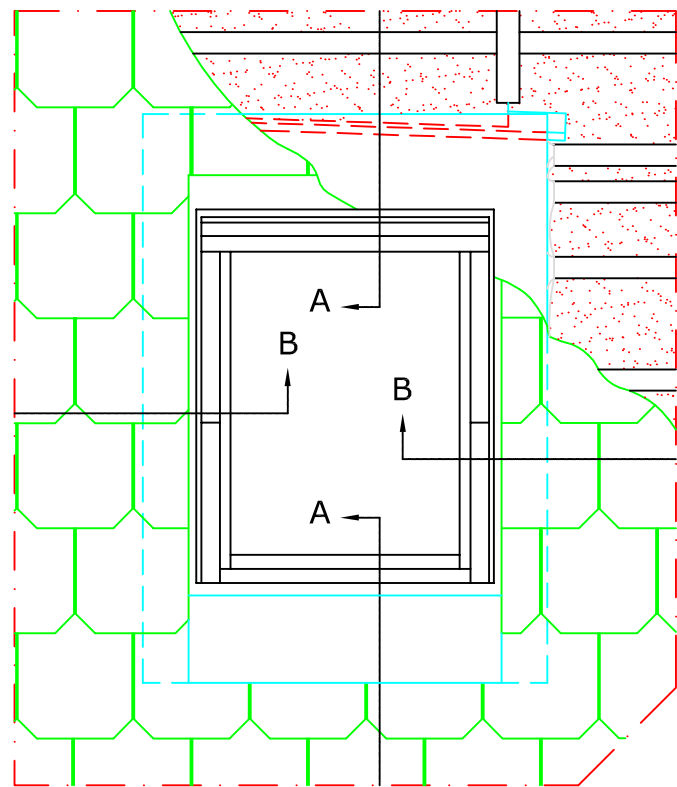
ROOF MAKER

WORLD CLASS ROOFLIGHTS

Call us: 0116 269 6297
Mon-Fri 9-5pm

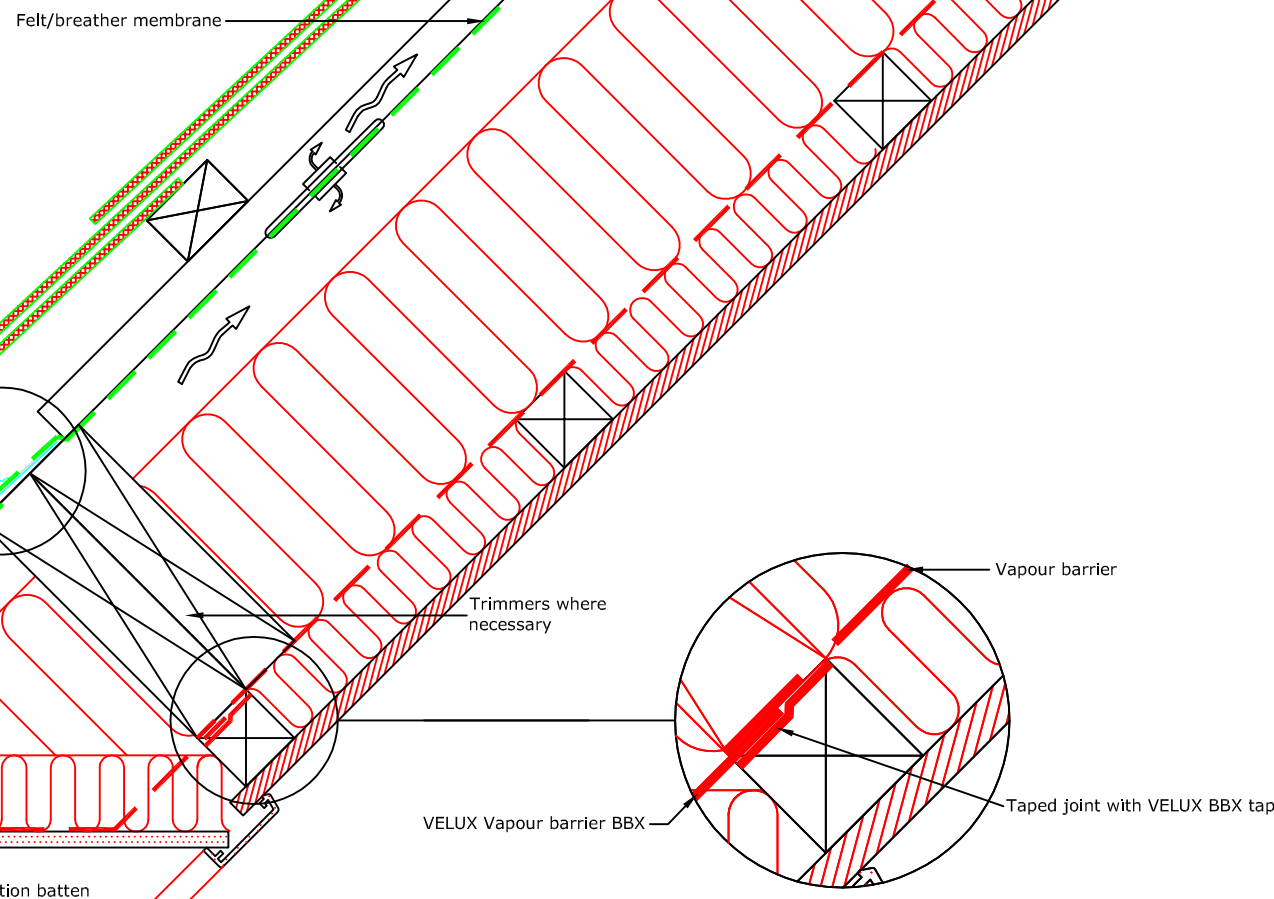
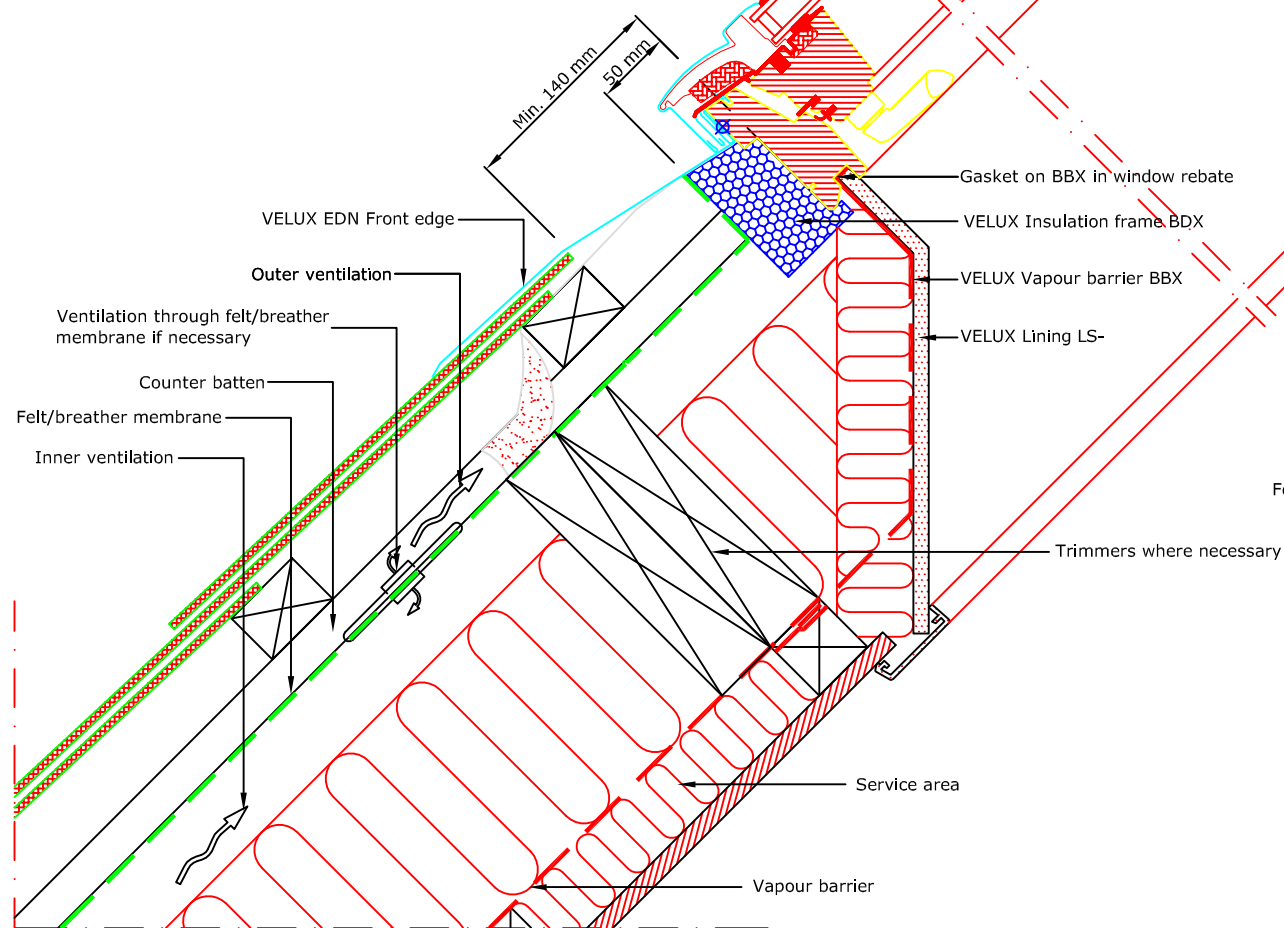
ROOF SECTION FITTING GUIDE





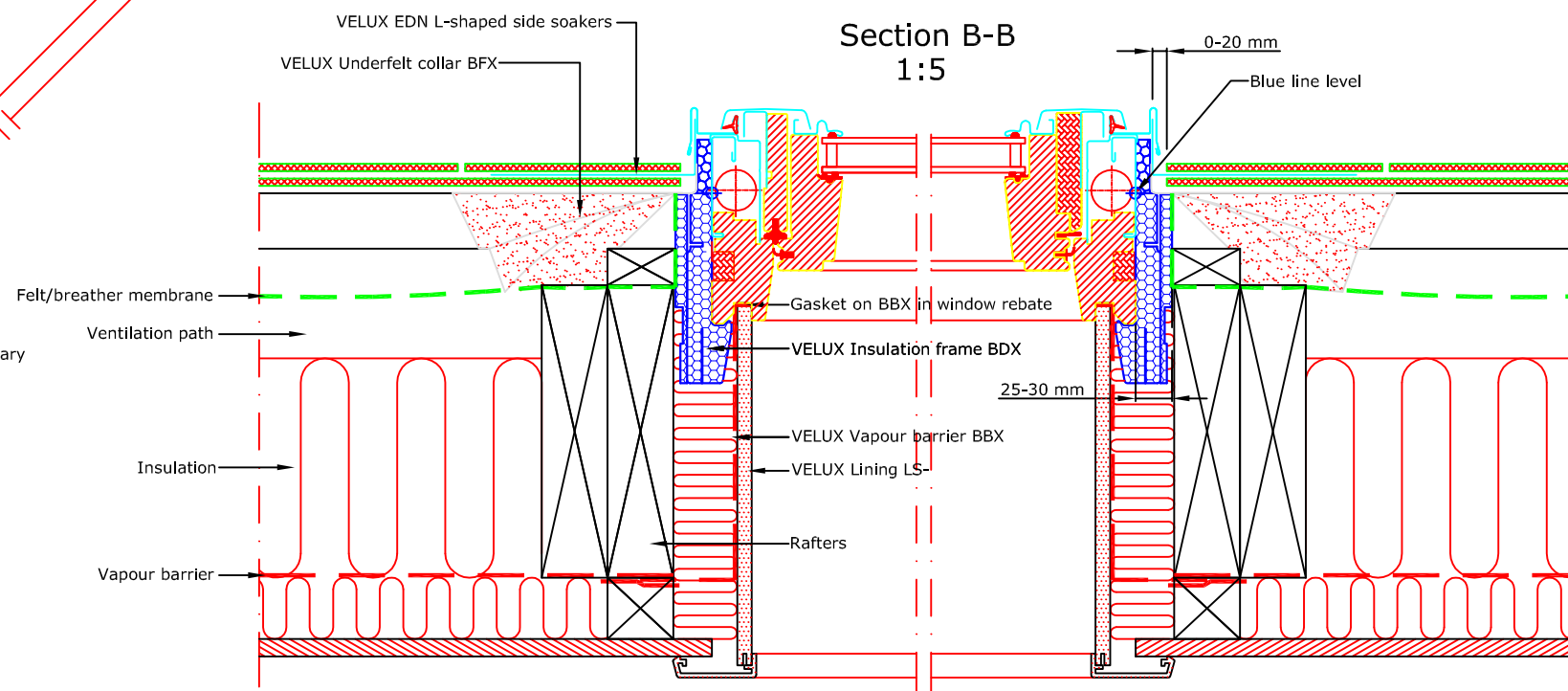
Section A-A
1:5

TYPICAL ELEVATION



- VELUX Products:
- GPL
15°-55°
* 55°-75° with special springs
 - EDN
20°-90°
 - BFX
 - BDX
 - BBX
 - LS-
- Roof covering:
- SLATES
< 8 mm

Section B-B
1:5



VELUX Company Ltd
Woodside Way
Glenrothes, Fife KY7 4ND
tel: +44 (0) 1592 778 225

VELUX top-hung roof window
GPL single installation into natural slate
EDN flashing kit - recessed install into natural slate up to 8mm thick
All dimensions are in millimetres where shown

NOTE! When installing VELUX roof windows, flashings and accessories, please ensure compliance with building regulations and British/European standards where necessary. This detail represents the principles of a typical installation only and the design and specification of the final detail is the responsibility of others.

Latest revision:

Date: **January 2014**
Rev no:
Rev date:
Drawn: **PJH**

File name:
GPL-EDN-0114-1114
Scale: **1:5 approx. @ A3**