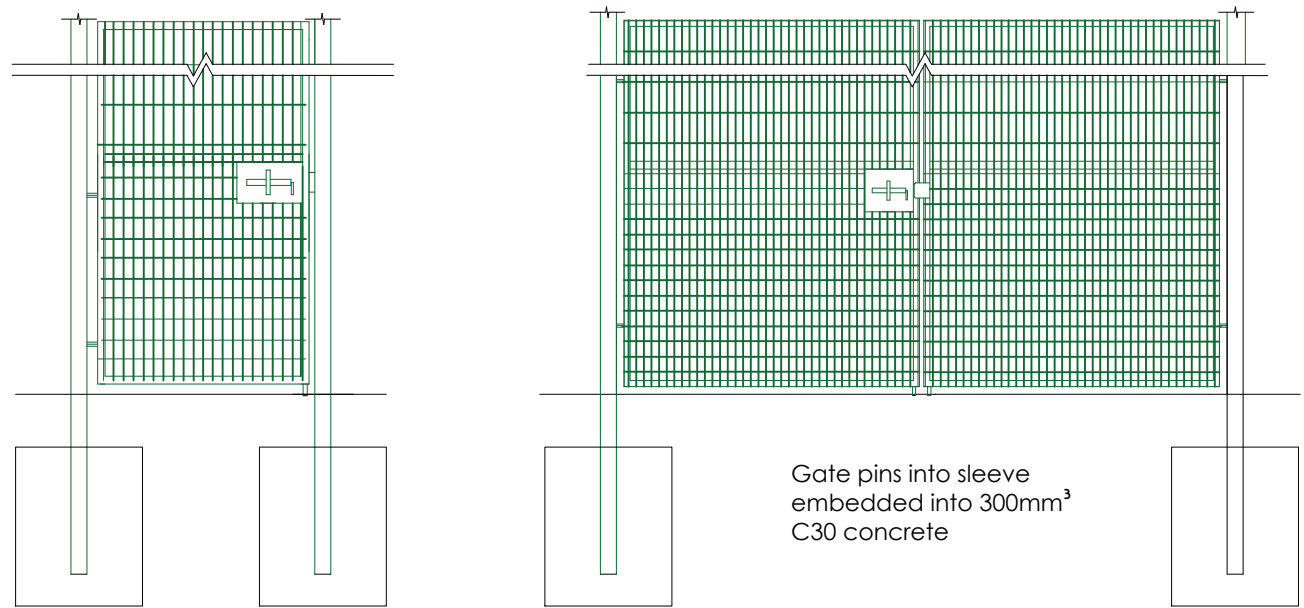


NOTES  
It is the contractors responsibility to check design levels and sizes for compliance. Any discrepancies or errors to be identified to the design team.



Typical single gate

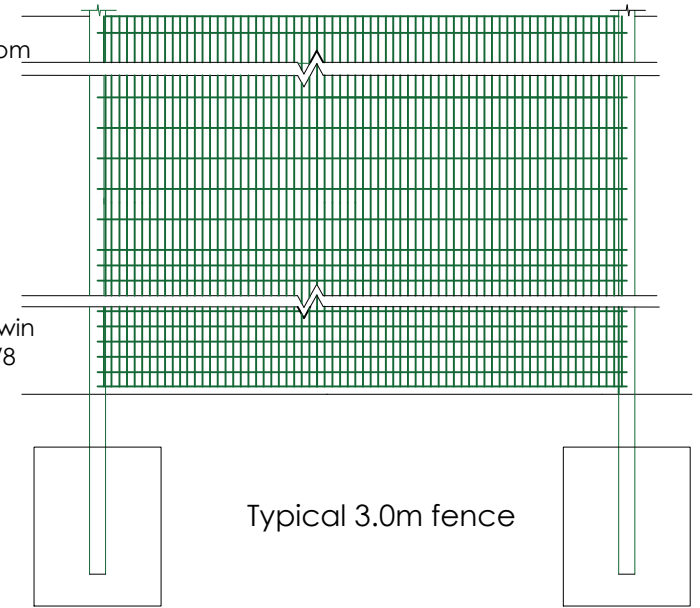
Typical double gate

Gate pins into sleeve embedded into 300mm<sup>3</sup> C30 concrete

Gates hinges allow for 180° opening out away from pitch. gate should facilitate being pinned opened and shut. gates 3.0m high.

Gate frames to be square hollow section  
Gate posts to be square hollow section  
Slide bolt with facility for padlock

Bottom panel 1.2m high 50x50mm 8/6/8 twin wire fencing. There above 200x50mm 8/6/8 twin wire.



Typical 3.0m fence

fence posts to be rectangular hollow section  
bottom panel 1.2m high 50x50mm 8/6/8 twin wire fencing.

from 1.2m to 3.0m  
200x50mm 8/6/8 twin wire

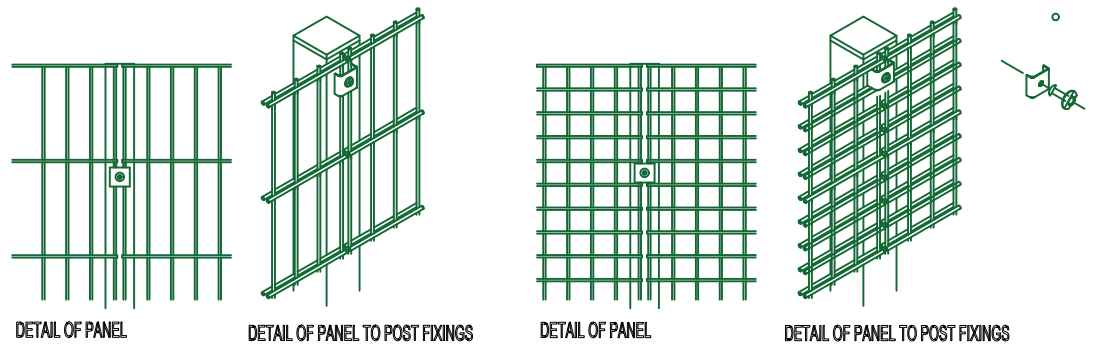
ball stop fencing panel secured to posts and frame using coated slotted clamp flats and m8 bolts and m8 anti-vandal nuts

foundations c30 concrete sizes to be confirmed based on exposed ground conditions

fencing panel providing to match existing perimeter fencing

### 01 | GATE DETAILS NTS

### 02 | FENCE DETAILS NTS



DETAIL OF PANEL

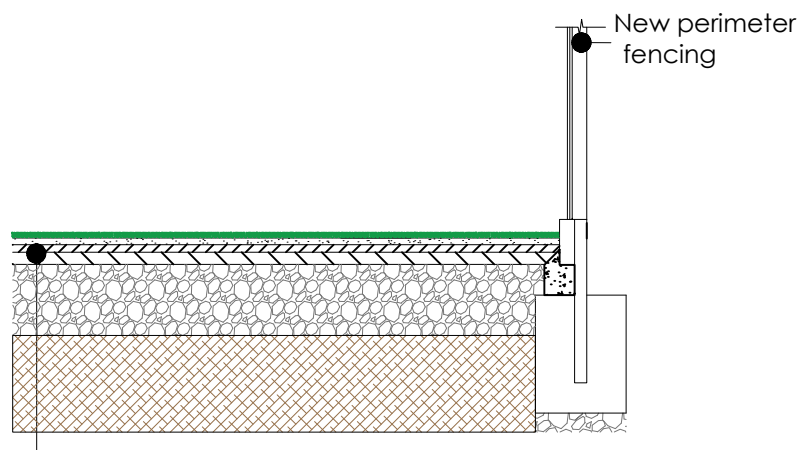
DETAIL OF PANEL TO POST FIXINGS

DETAIL OF PANEL

DETAIL OF PANEL TO POST FIXINGS

panel (200x50x6) connection detail perimeter fencing  
NTS

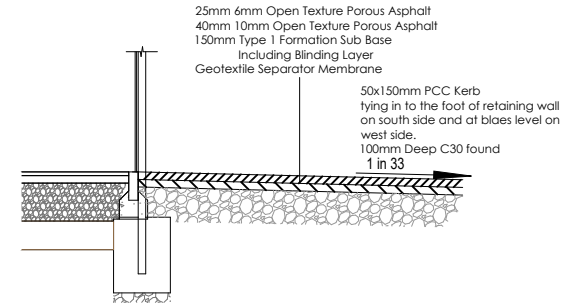
panel (50x50x6) connection detail perimeter fencing  
nts



- New 2G Sand Dressed
- New In-Situ Shockpad
- New Porous Asphalt Double Layer
- New Sub-Base Material Modified Type 1 inc. Blinding
- New Geo-Grid as Sprecified
- New Geotextile Membrane
- Additional Capping Layer (If Required)
- Formation

- 20mm
- 15mm Approx.
- 65mm (40mm + 25mm)
- 300mm
- 
- 
- 
- 

### 03 | PROPOSED PITCH CONSTRUCTION SECTION SCALE: 1:25



25mm 6mm Open Texture Porous Asphalt  
40mm 10mm Open Texture Porous Asphalt  
150mm Type 1 Formation Sub Base  
Including Blinding Layer  
Geotextile Separator Membrane  
50x150mm PCC Kerb  
lying in to the foot of retaining wall on south side and at bloes level on west side.  
100mm Deep C30 found  
1 in 33

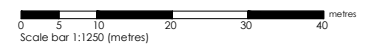
### 04 | STANDARD ACCESS PATH SECTION SCALE: 1:40

| REVISION | DETAILS | BY | DATE | CHECKED |
|----------|---------|----|------|---------|
|          |         |    |      |         |



info@sportslabsconsult.com

ST GREGORY'S CATHOLIC SCHOOL  
CONSTRUCTION DETAILS  
CONSTRUCTION OF A NEW 2G PITCH



|                    |              |                |
|--------------------|--------------|----------------|
| Date: 10/2023      | Job No. 3219 | Drawn by: CH   |
| Scale: VARIES @ A3 |              | Checked by: DO |