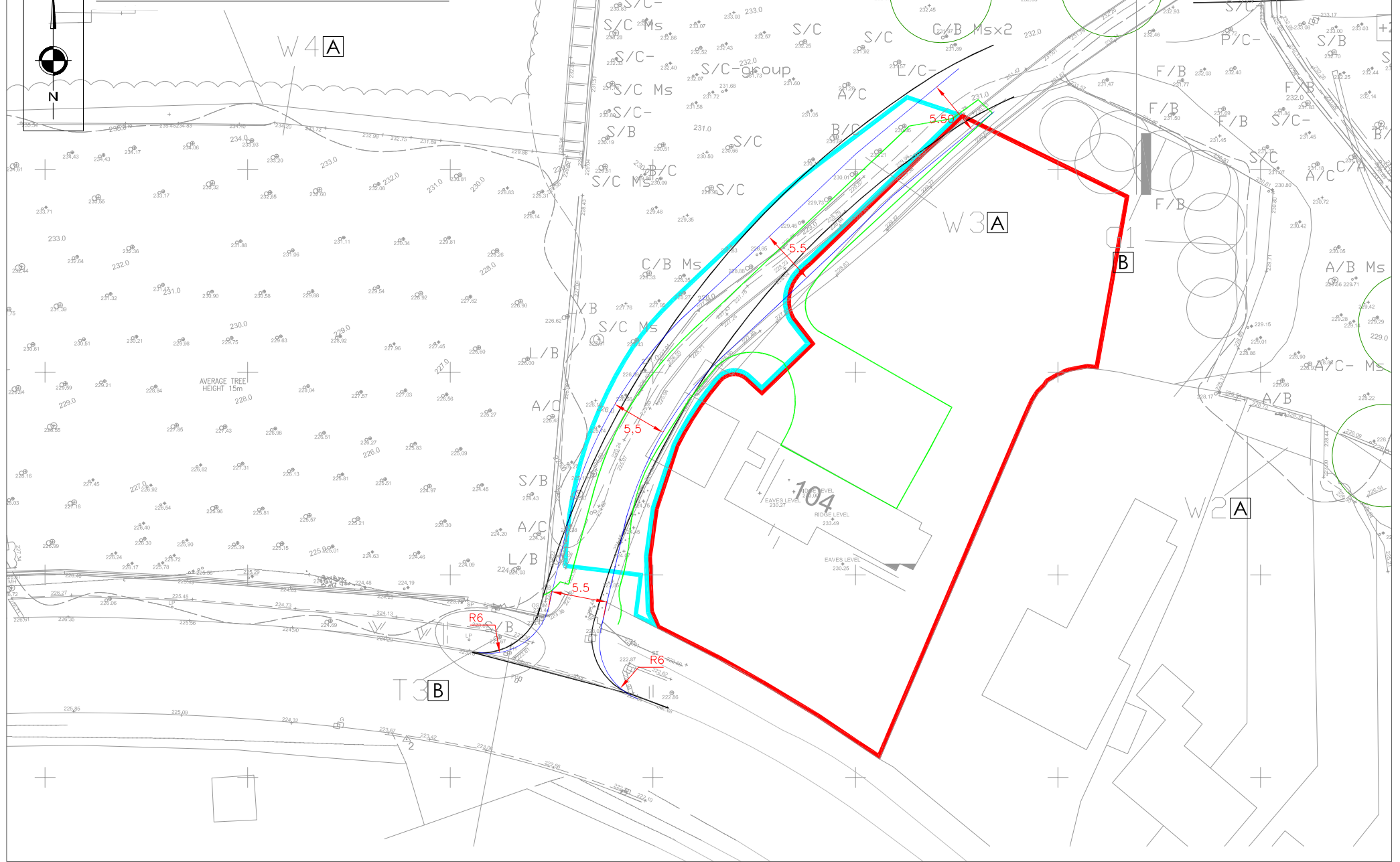
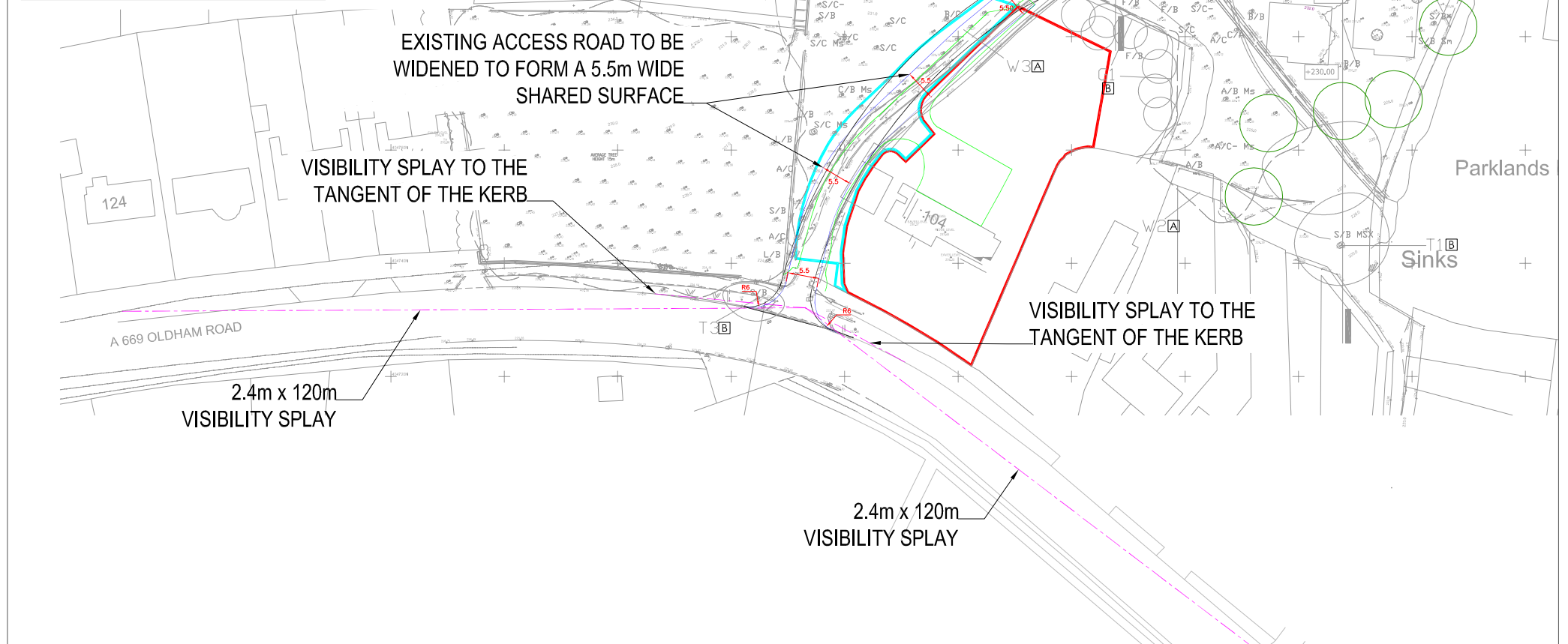


SITE ACCESS ARRANGEMENT. SCALE 1:500



VISIBILITY SPLAYS. SCALE 1:1000

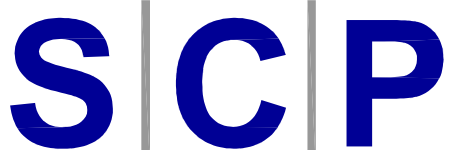


KEY

- TITLE PLANS (VARIOUS) ———
- ALIGNMENT OF EXISTING ACCESS ROAD - AS BUILT ———
- PROPOSED ACCESS ROAD ALIGNMENT - AS INCOMING ———
- SCP PROPOSED ACCESS ROAD ALIGNMENT ———
- PROPOSED DIMENSIONS ↔ x.xm

REVISIONS

Rev	Description	Date	By
-	-	-	-
-	-	-	-
-	-	-	-



Transportation Planning : Infrastructure Design
Colwyn Chambers, 19 York Street, Manchester, M2 3BA, Tel 0161 832 4400,
www.scptransport.co.uk, Email info@scptransport.co.uk

Client
CLIVE RAINFORD HOMES LTD

Project Title
LAND TO THE NORTH OFF THE A669 - OLDHAM ROAD, GRASSCROFT

Drawing Title
POTENTIAL SITE ACCESS ARRANGEMENT

Scale
AS STATED @ A3

Date
09.11.2023

Approved/Unapproved
-

By
BA

Checked
PT

Status
PLANNING

Drawing No.
SCP/230893/D01

Revision
-