

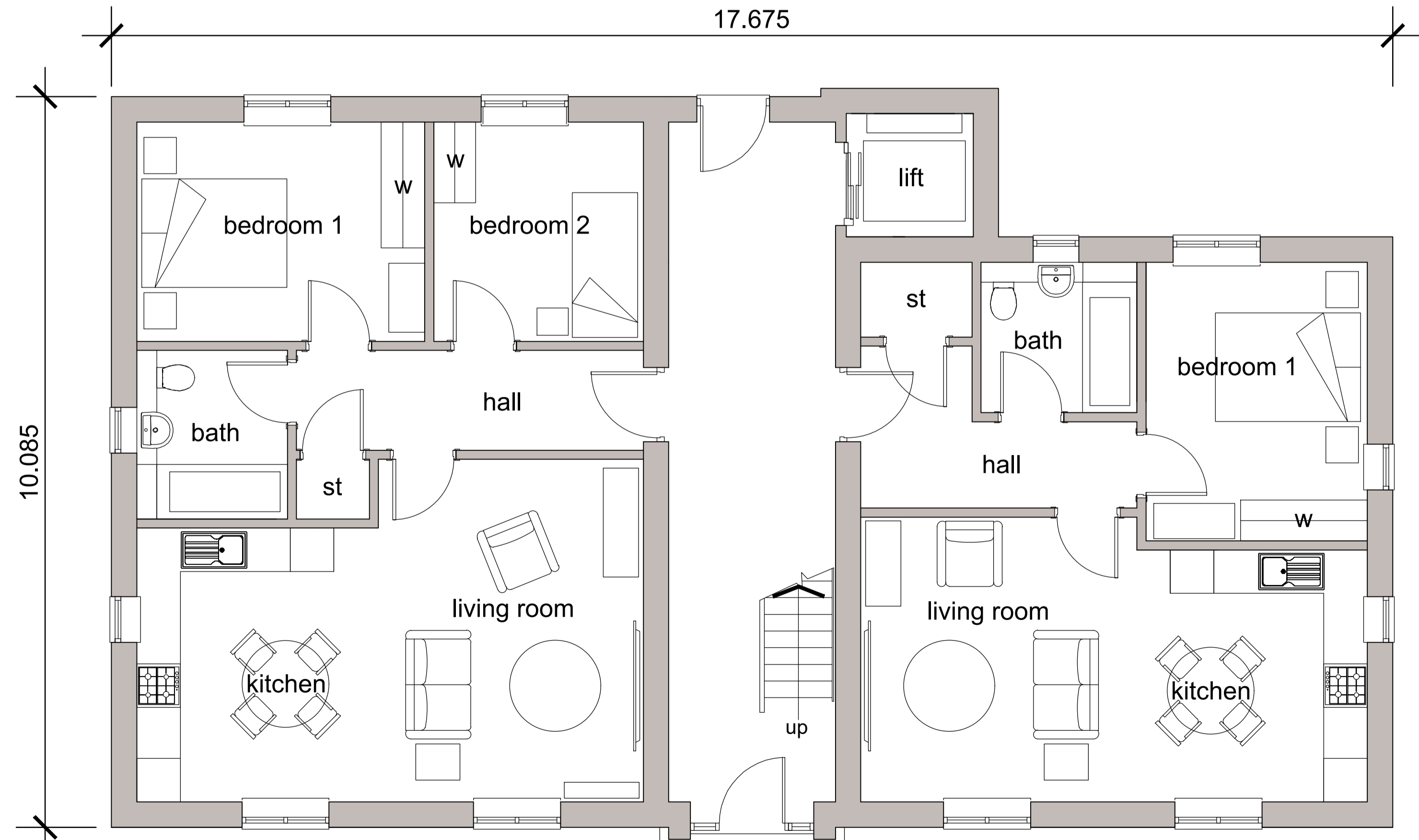
Consultant:
Kevin R. Twigger & Associates Ltd
 Rushall House, School Road, Brewood, Staffs, ST19 9DS
 t| 01902 851 641 e| admin@krtassociates.co.uk
 w| www.krtassociates.co.uk

KRT Job Reference Number: 1258

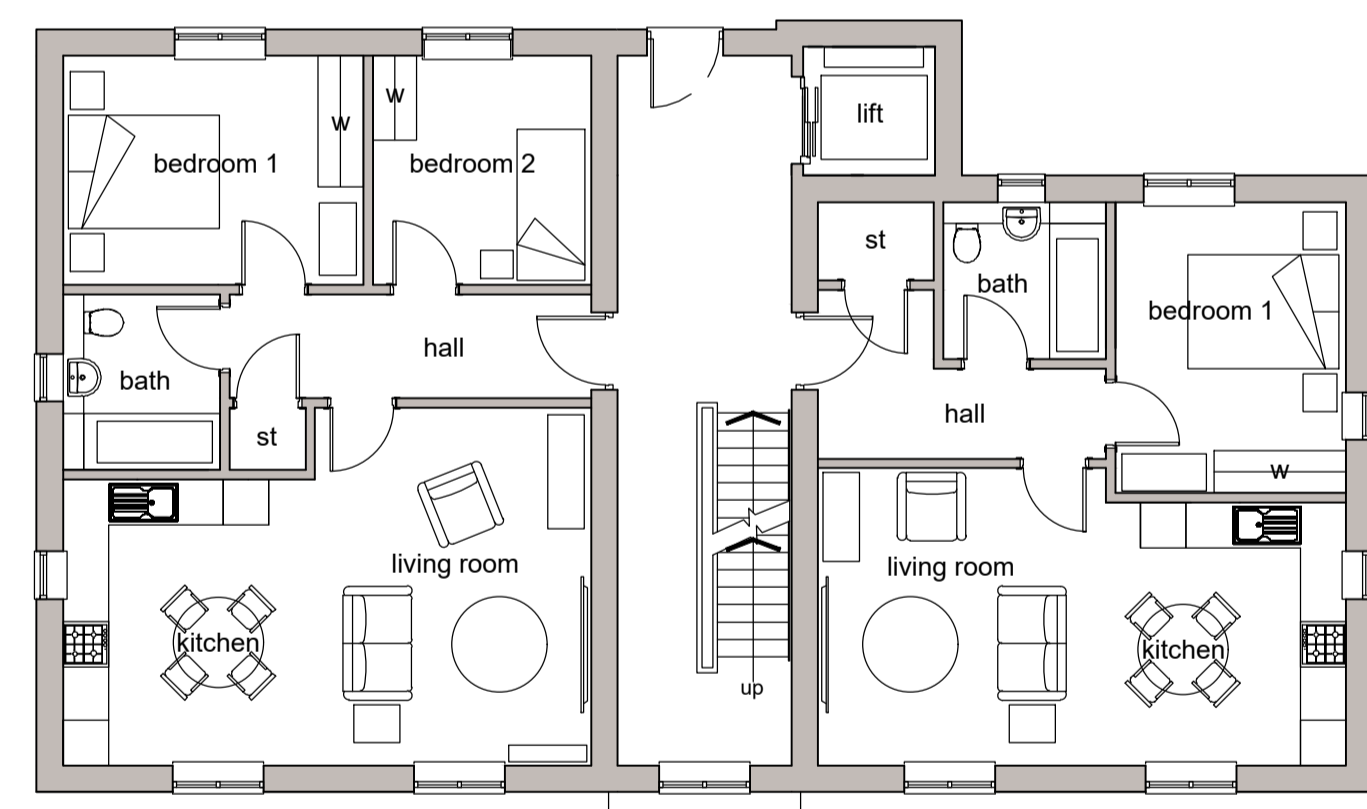
Notes

Rev	Date	Description
B	20.09.23	"not to be scaled note" removed.
A	01.09.23	Detail Updated

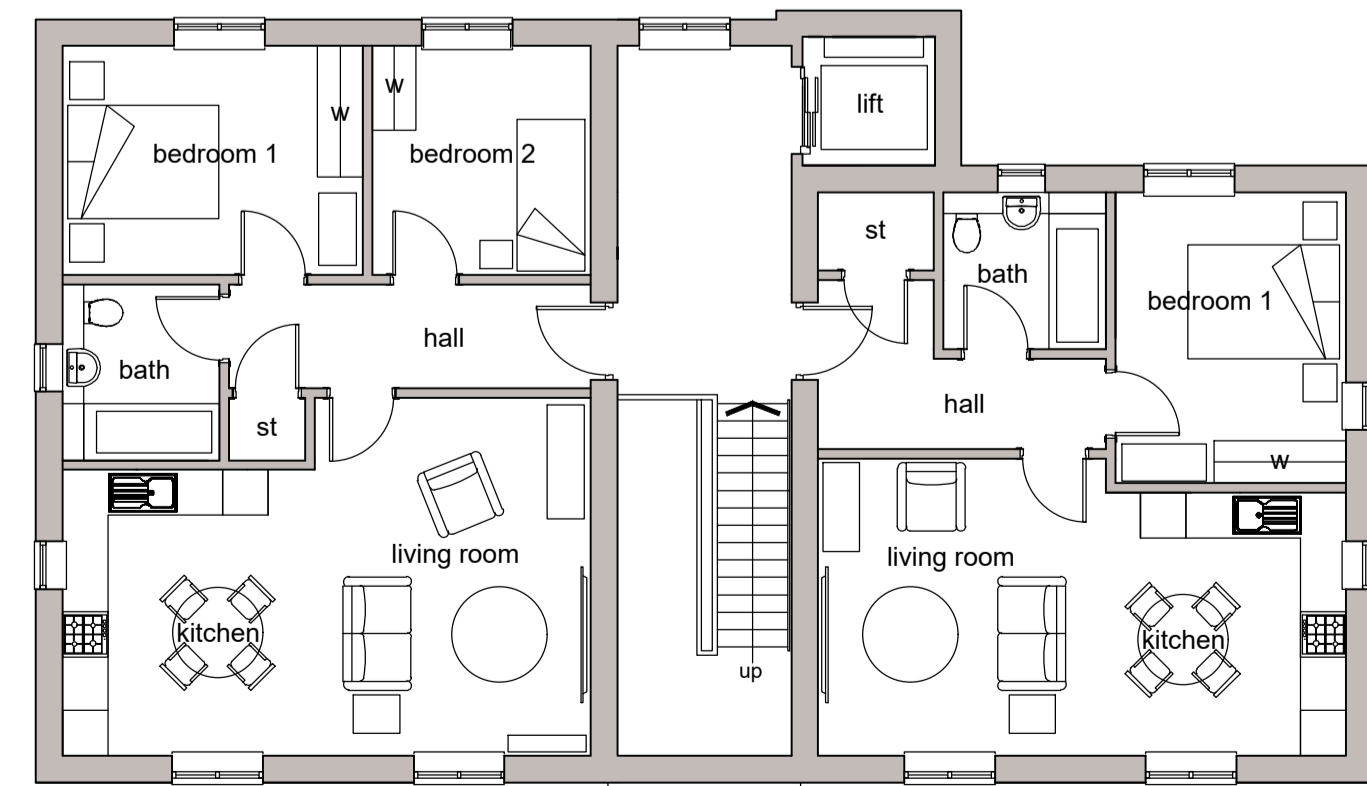
front elevation



ground floor plan



first floor plan



second floor plan

Rev	Date	Description
B	20.09.23	"not to be scaled note" removed.
A	01.09.23	Detail Updated

PAUL NEWMAN
 NEW HOMES
 12 YEARLSTONE SQUARE
 ASHLAND
 MILTON KEYNES MK6 4AT
 Tel: 01908 690216
 Web: www.paulnewmanhomes.co.uk

Project:
 RESIDENTIAL DEVELOPMENT
 RAUNDS ROAD - SPENCER STREET
 RINGSTEAD
 NORTHAMPTONSHIRE

Drawing Title:
 AFFORDABLE APARTMENTS
 plots 6, 7, 8, 9, 10 and 11
 FRONT ELEVATION AND
 FLOOR PLANS

Drawn: D.Frost	Date: August 2023	Scale: 1:50 @A1
Drawing No: 1258-60	Revision: B	
Drawing Status: PLANNING		