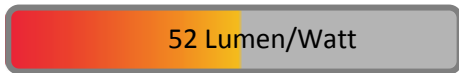


PHOTOMETRIC TEST REPORT

DARTMOUTH SINGLE LED BLACK

astro

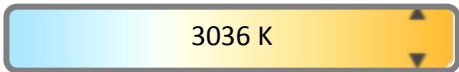
LIGHT EFFICIENCY:



LIGHT QUALITY:



COLOR TEMPERATURE:



OUTPUT: 236 lm
PEAK: 1021 cd
POWER: 4.5 W
PF: 0.46



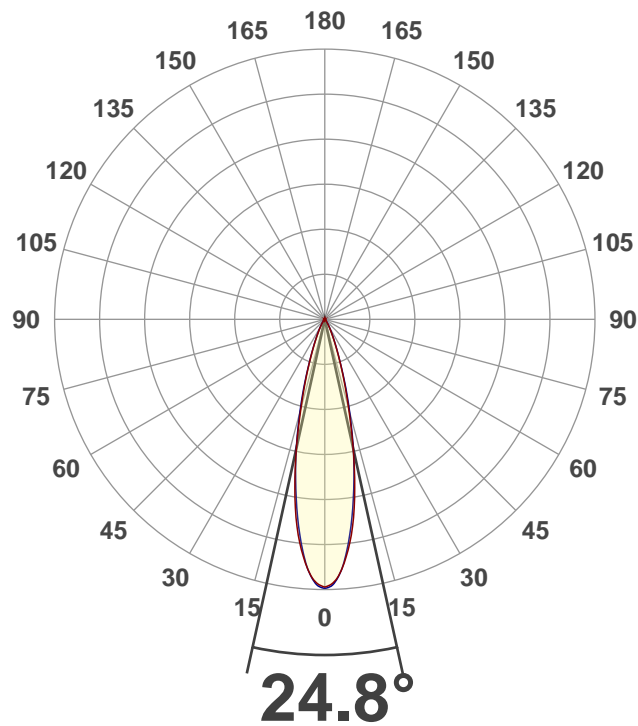
Tracking number: [n/a](#)

Product name:
Dartmouth Single LED Black

Item number:
1372003

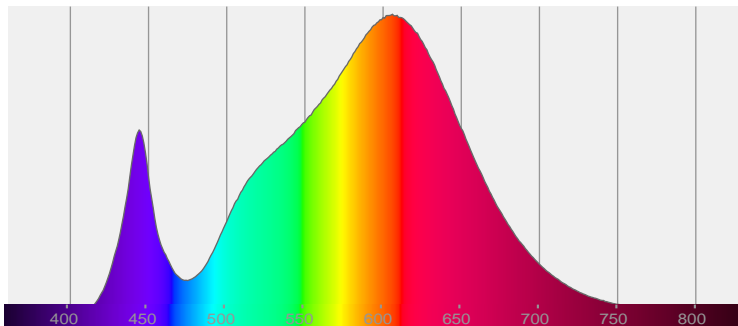
Date and time:
20/09/2019 12:50:03

Description:
IP54 Outdoor LED Wall Light

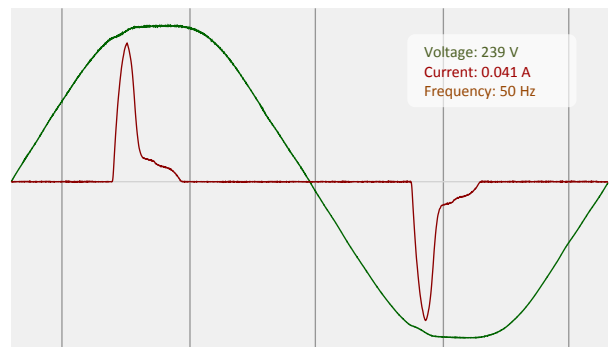


CIE 1931
x: 0.433
y: 0.399

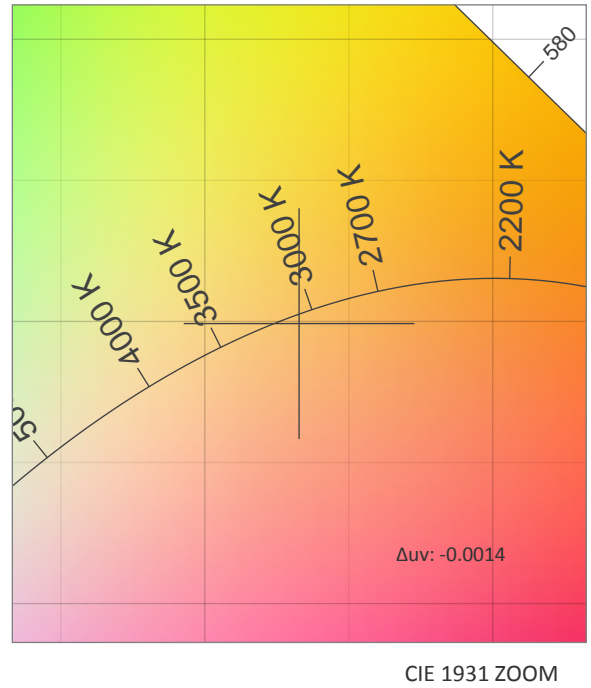
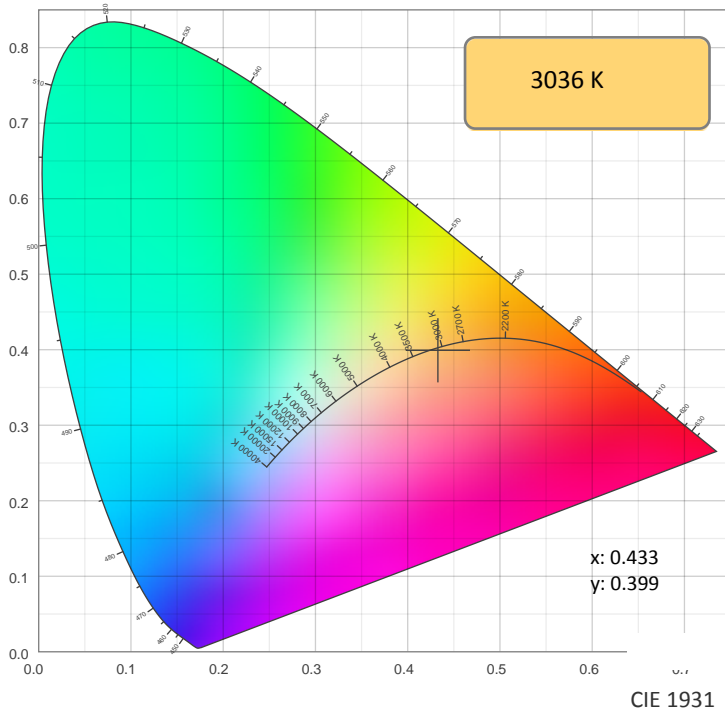
SPECTRA



POWER

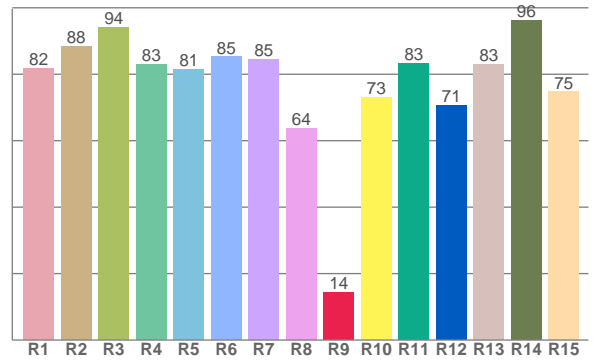
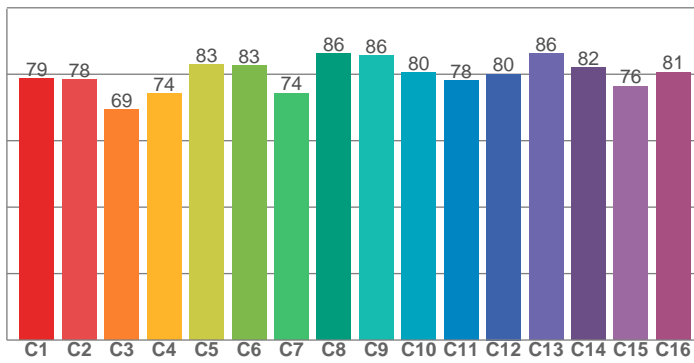


COLOR DETAILS



TM30: 79.7

CRI: 82.7 (R1-R8)



CRI R values, only R1-R8 are used to calculate final CRI value

R1	R2	R3	R4	R5	R6	R7	R8	R9	R10	R11	R12	R13	R14	R15
81.7	88.2	94.0	83.0	81.3	85.2	84.5	63.7	14.3	72.9	83.2	70.7	82.9	96.2	74.7

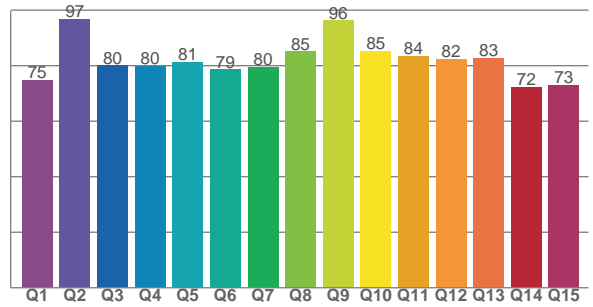
TM30 C values, 16 binned values out of total of 99 C values

C1	C2	C3	C4	C5	C6	C7	C8	C9	C10	C11	C12	C13	C14	C15	C16
78.8	78.3	69.3	74.2	83.0	82.6	74.3	86.2	85.5	80.5	78.1	80.1	86.2	82.0	76.4	80.6

CQS Q values

Q1	Q2	Q3	Q4	Q5	Q6	Q7	Q8	Q9	Q10	Q11	Q12	Q13	Q14	Q15
74.7	96.7	80.0	79.9	81.3	78.6	79.6	85.1	96.3	85.4	83.5	82.3	82.7	72.4	73.0

CQS: 80.7



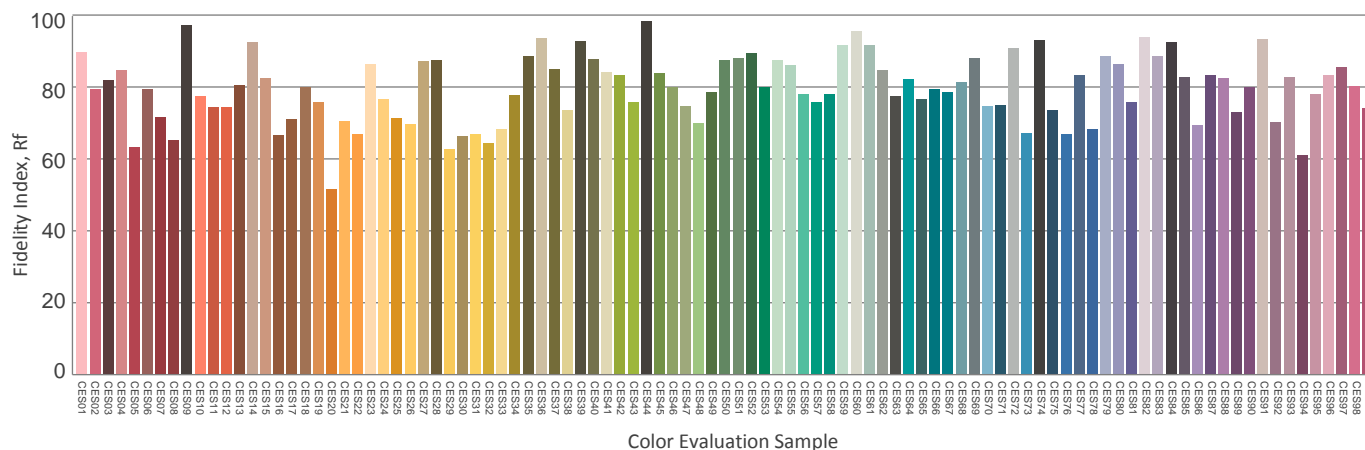
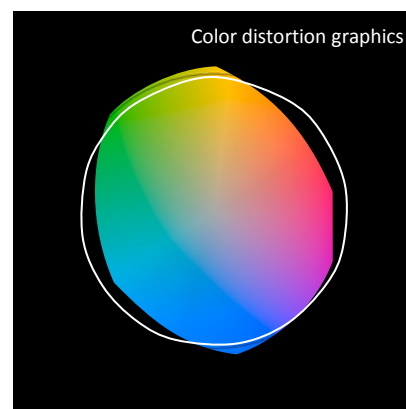
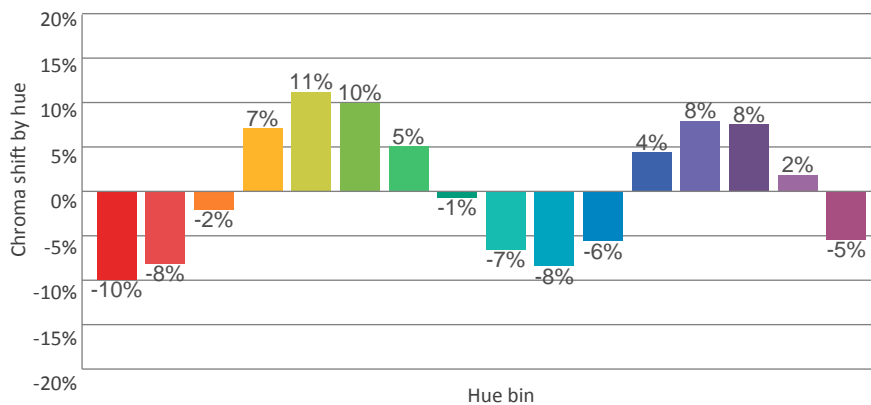
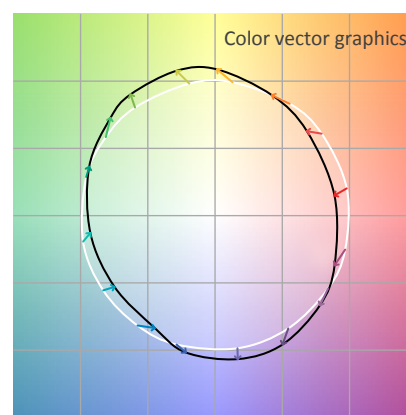
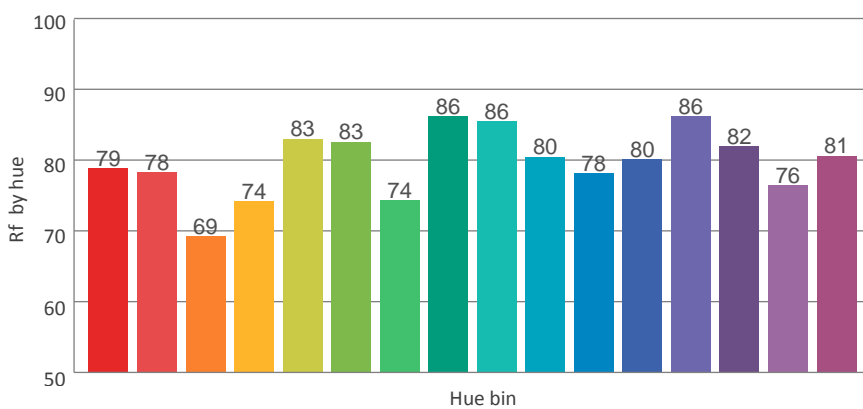
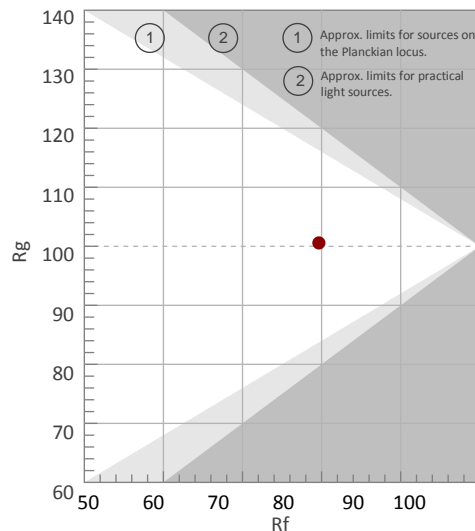
COLOR PARAMETERS

Color temperature	Color rendering index	Red component	Color fidelity	Color gamut	Color quality scale	Color coordinate cie 1931	Color coordinate cie 1931	Color coordinate	Color coordinate	Color deviation from black body
CCT	CRI	CRI R9	TM30 Rf	TM30 Rg	CQS	x	y	u	v	Δuv
3036 K	82.7	14.3	79.7	100.6	80.7	0.433	0.399	0.250	0.346	-0.0014

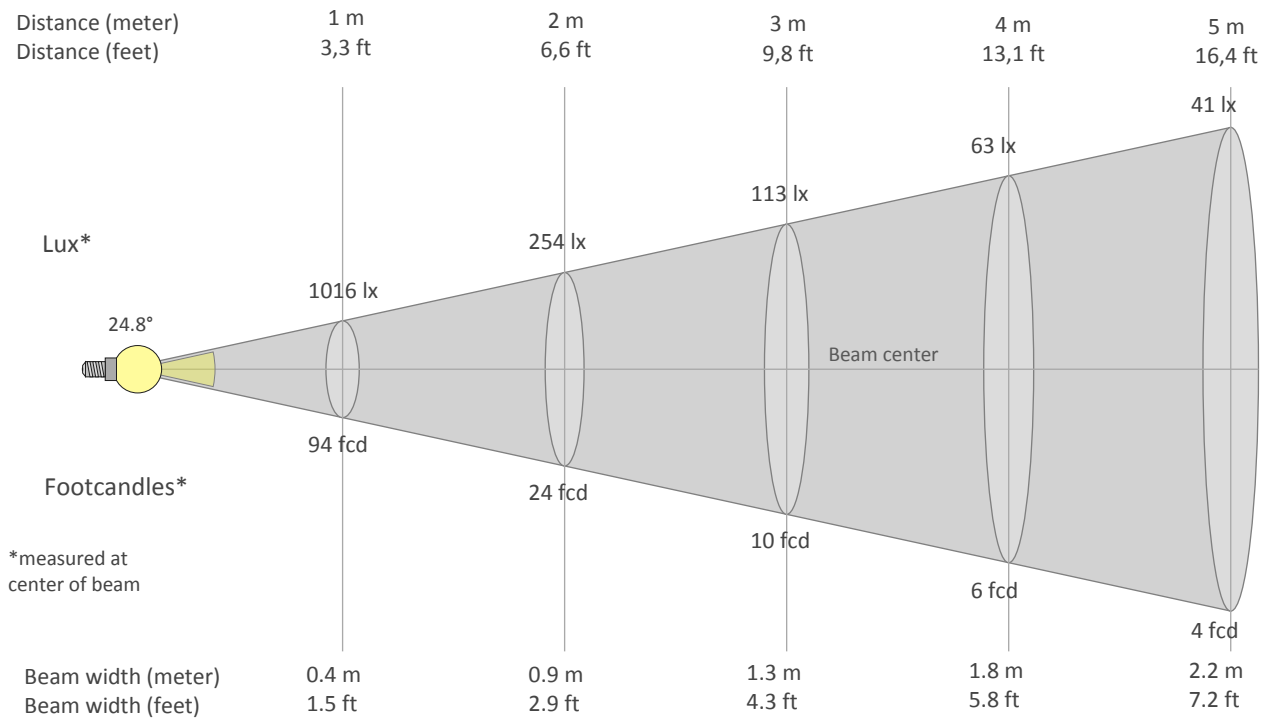
Rf 79.7
Fidelity index Rf

Rg 100.6
Gammut index Rg

		Graphic shifts (%)	
Hue Bin	Rf	Chroma	Hue
1	79	-10%	-3%
2	78	-8%	8%
3	69	-2%	15%
4	74	7%	13%
5	83	11%	7%
6	83	10%	-3%
7	74	5%	-14%
8	86	-1%	-8%
9	86	-7%	-5%
10	80	-8%	3%
11	78	-6%	12%
12	80	4%	8%
13	86	8%	-1%
14	82	8%	-10%
15	76	2%	-14%
16	81	-5%	-13%



BEAM DETAILS



Beam intensities from 1-20m

1m	2m	3m	4m	5m	6m	7m	8m	9m	10m	11m	12m	13m	14m	15m	16m	17m	18m	19m	20m
3.3ft	6.6ft	9.8ft	13.1ft	16.4ft	19.7ft	23ft	26.2ft	29.5ft	32.8ft	36.1ft	39.4ft	42.7ft	45.9ft	49.2ft	52.5ft	55.8ft	59.1ft	62.3ft	65.6ft
1016lx	254lx	113lx	63lx	41lx	28lx	21lx	16lx	13lx	10lx	8lx	7lx	6lx	5lx	5lx	4lx	4lx	3lx	3lx	3lx
94.4fcd	23.6fcd	10.5fcd	5.9fcd	3.8fcd	2.6fcd	1.9fcd	1.5fcd	1.2fcd	0.9fcd	0.8fcd	0.7fcd	0.6fcd	0.5fcd	0.4fcd	0.4fcd	0.3fcd	0.3fcd	0.3fcd	0.2fcd

Intensities in 0° c-plane

0°	2°	4°	6°	8°	10°	12°	14°	16°	18°	20°	22°	24°	26°	28°	30°	32°	34°	36°	38°
1016	998	949	871	775	655	529	406	304	225	163	118	85	61	45	33	25	18	14	11
100%	98%	93%	86%	76%	65%	52%	40%	30%	22%	16%	12%	8%	6%	4%	3%	2%	2%	1%	1%

Intensities in 90° c-plane

0°	2°	4°	6°	8°	10°	12°	14°	16°	18°	20°	22°	24°	26°	28°	30°	32°	34°	36°	38°
1016	1004	947	855	750	637	527	417	319	234	165	119	87	63	46	35	26	20	16	13
100%	99%	93%	84%	74%	63%	52%	41%	31%	23%	16%	12%	9%	6%	5%	3%	3%	2%	2%	1%

Intensities in 180° c-plane

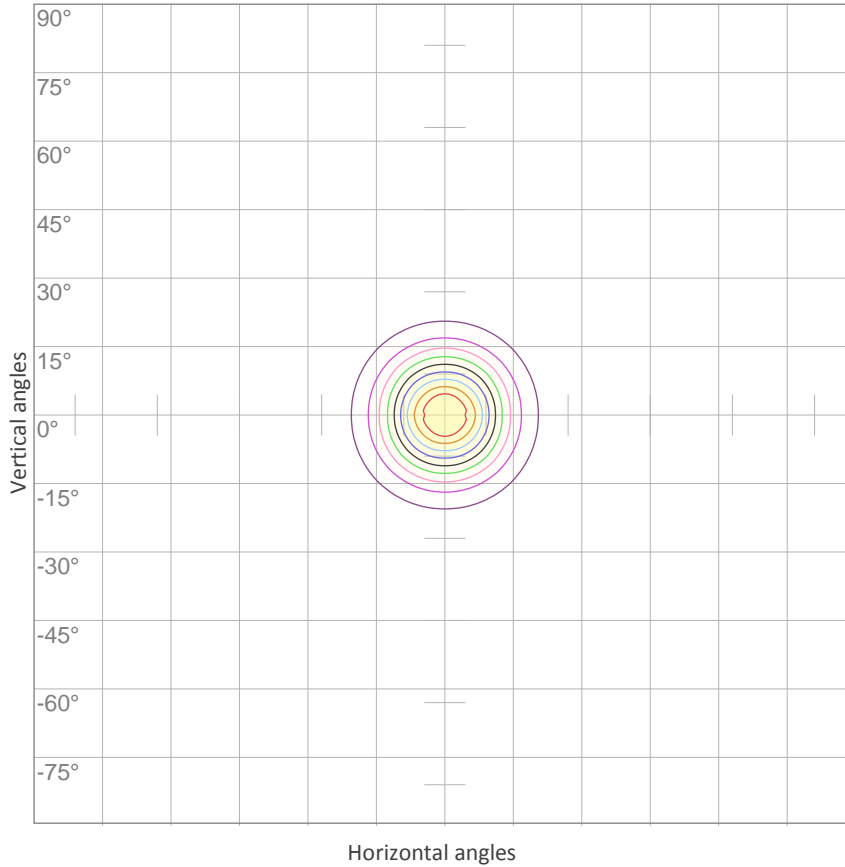
0°	2°	4°	6°	8°	10°	12°	14°	16°	18°	20°	22°	24°	26°	28°	30°	32°	34°	36°	38°
1016	998	949	871	775	655	529	406	304	225	163	118	85	61	45	33	25	18	14	11
100%	98%	93%	86%	76%	65%	52%	40%	30%	22%	16%	12%	8%	6%	4%	3%	2%	2%	1%	1%

Intensities in 270° c-plane

0°	2°	4°	6°	8°	10°	12°	14°	16°	18°	20°	22°	24°	26°	28°	30°	32°	34°	36°	38°
1016	1004	947	855	750	637	527	417	319	234	165	119	87	63	46	35	26	20	16	13
100%	99%	93%	84%	74%	63%	52%	41%	31%	23%	16%	12%	9%	6%	5%	3%	3%	2%	2%	1%

Beam angle 50%	Field angle 10%	Cutoff angle 2,5%	Intensity ratio in 120° cone	Intensity ratio in 90° cone
24.8°	46.2°	63.8°	98.7%	96.8%

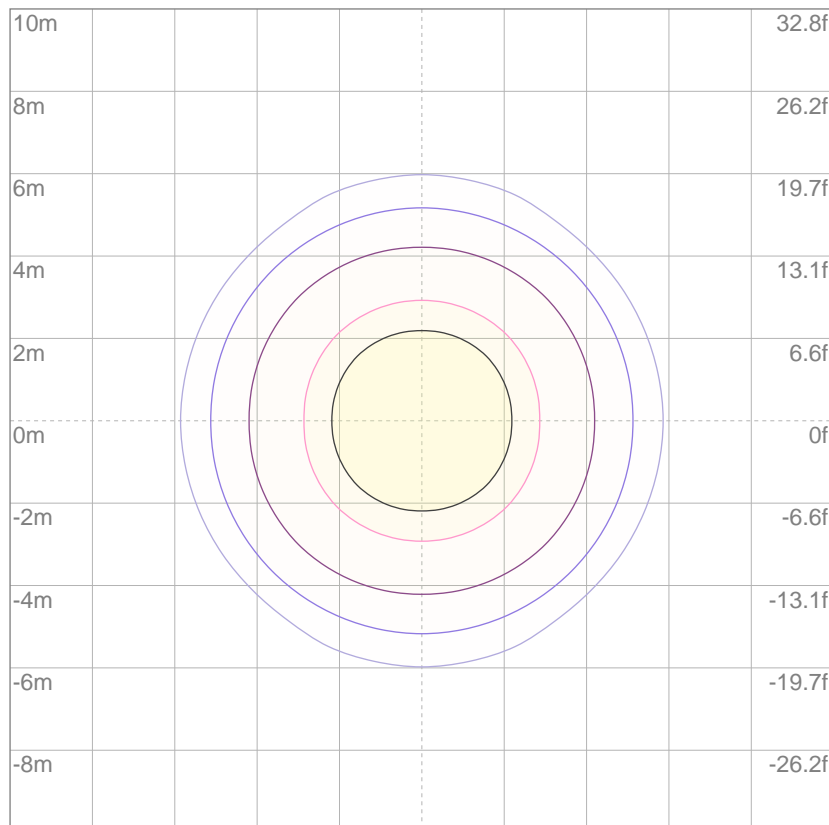
ISO CANDELA DIAGRAM



10%	102 cd
20%	203 cd
30%	305 cd
40%	406 cd
50%	508 cd
60%	609 cd
70%	711 cd
80%	813 cd
90%	914 cd

Conditions:
 Number of c-planes: 8
 Candela at center: 1016 cd

ISO LUX DIAGRAM



Mounting height: 10 meters (33 feet)

3%	0.305 lx
5%	0.508 lx
10%	1.02 lx
30%	3.05 lx
50%	{LUX_10M50} lx

Conditions:
 Number of c-planes: 8
 Lux at center: 10.2 lx

Lux distribution on a surface when lamp is mounted at 10 meters from the surface.

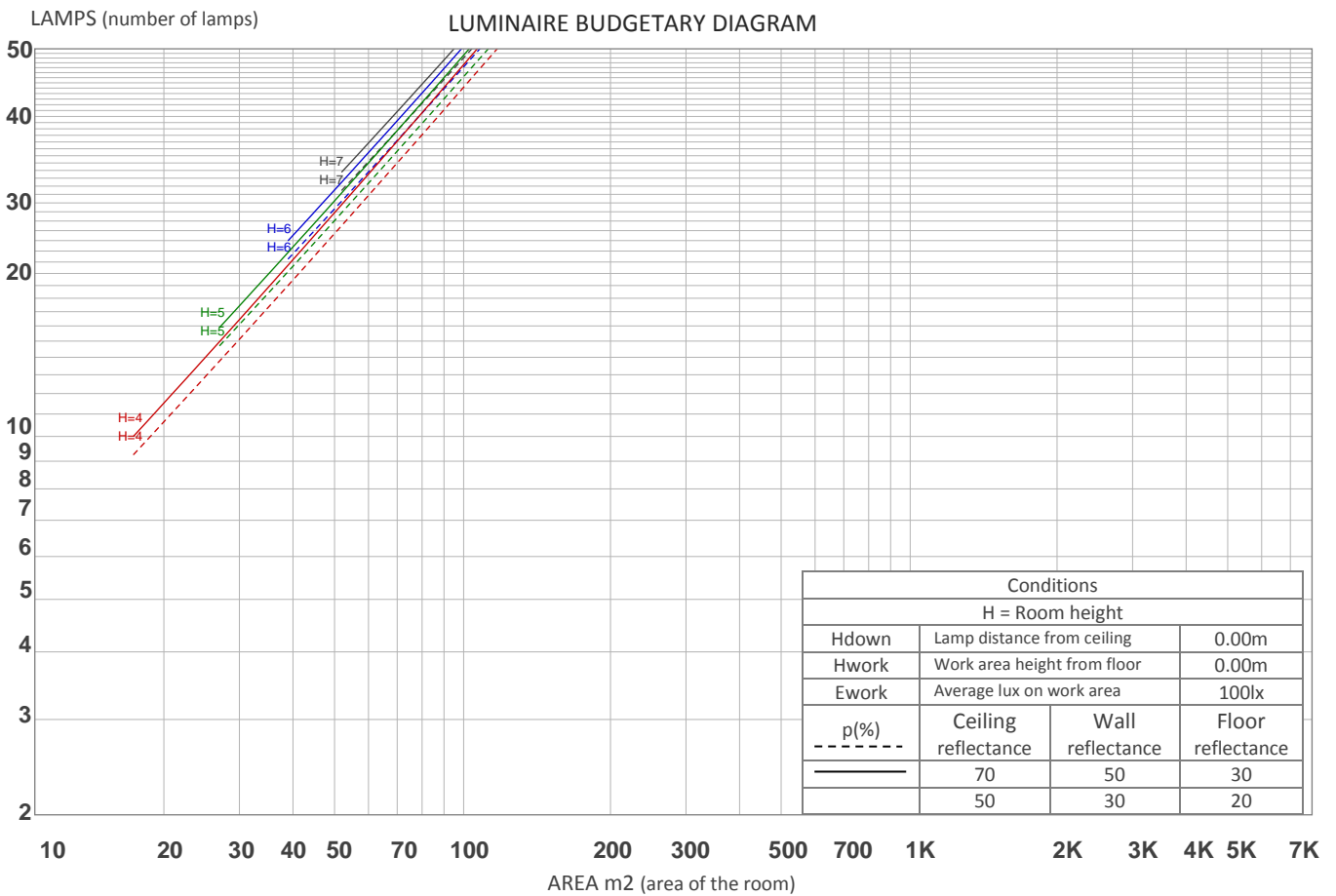
UGR

GLARE EVALUATION ACCORDING TO UGR

p Ceiling	70	70	50	50	30	70	70	50	50	30	
p Walls	50	30	50	30	30	50	30	50	30	30	
p Floor	20	20	20	20	20	20	20	20	20	20	
Room size X Y	Viewing direction at right angles to lamp axis					Viewing direction parallel to lamp axis					
2H 2H	2H	7.9	8.6	8.2	8.8	9.0	9.1	9.8	9.4	10.0	10.2
	3H	8.3	8.9	8.6	9.1	9.4	9.6	10.2	9.9	10.5	10.7
	4H	8.3	8.9	8.6	9.2	9.4	9.6	10.2	10.0	10.5	10.7
	6H	8.3	8.8	8.6	9.1	9.4	9.6	10.1	9.9	10.4	10.7
	8H	8.2	8.8	8.6	9.0	9.4	9.6	10.1	9.9	10.4	10.7
	12H	8.2	8.7	8.6	9.0	9.3	9.5	10.0	9.9	10.3	10.7
4H 2H	2H	8.1	8.7	8.4	9.0	9.2	9.2	9.8	9.5	10.1	10.3
	3H	8.6	9.0	8.9	9.4	9.7	9.8	10.2	10.1	10.5	10.9
	4H	8.6	9.0	9.0	9.4	9.7	9.8	10.2	10.2	10.6	10.9
	6H	8.6	8.9	9.0	9.3	9.7	9.8	10.1	10.2	10.5	10.9
	8H	8.5	8.8	9.0	9.2	9.6	9.7	10.1	10.2	10.4	10.8
	12H	8.5	8.8	9.0	9.2	9.6	9.7	10.0	10.2	10.4	10.8
8H 4H	4H	8.6	8.9	9.0	9.3	9.7	9.7	10.0	10.2	10.4	10.8
	6H	8.5	8.8	9.0	9.2	9.6	9.7	9.9	10.2	10.4	10.8
	8H	8.5	8.7	9.0	9.1	9.6	9.7	9.9	10.1	10.3	10.8
	12H	8.5	8.6	8.9	9.1	9.6	9.6	9.8	10.1	10.3	10.8
12H 4H	4H	8.5	8.8	9.0	9.2	9.6	9.7	10.0	10.1	10.4	10.8
	6H	8.5	8.7	9.0	9.1	9.6	9.7	9.8	10.1	10.3	10.8
	8H	8.5	8.6	8.9	9.1	9.6	9.6	9.8	10.1	10.3	10.8
Variation of the observer position for the luminaire distance S											
S = 1.0H	+2.6 / -2.0					+2.1 / -1.4					
S = 1.5H	+4.8 / -2.4					+4.0 / -1.8					
S = 2.0H	+6.5 / -3.7					+5.7 / -3.5					
Standard table	BK01					BK01					
Correction summand	-9.7					-8.5					
Corrected glare indices referring to 236 lm total luminous flux											

COEFFICIENTS OF UTILIZATION

Ceiling reflectance	80				70				50			30			10			0
Wall reflectance	70	50	30	10	70	50	30	10	50	30	10	50	30	10	50	30	10	0
Floor reflectance	20	20	20	20	20	20	20	20	20	20	20	20	20	20	20	20	20	0
RCR	(RCR: Room Cavity Ratio) Room Values are expressed as percentage of Lumens delivered to the task surface																	
0	119	119	119	119	116	116	116	116	111	111	111	106	106	106	102	102	102	100
1	115	112	110	109	112	110	108	107	106	105	103	102	101	100	99	98	97	96
2	111	107	103	101	108	105	102	100	102	99	97	99	97	95	96	95	93	92
3	107	102	98	95	105	100	97	94	98	95	93	95	93	91	93	91	90	88
4	103	97	93	90	101	96	92	89	94	91	88	92	90	87	91	88	86	85
5	100	93	89	86	98	93	89	85	91	87	85	89	86	84	88	85	83	82
6	97	90	86	82	95	89	85	82	88	84	82	87	83	81	85	83	81	79
7	94	87	82	79	93	86	82	79	85	81	79	84	81	78	83	80	78	77
8	91	84	80	77	90	83	79	76	83	79	76	82	78	76	81	78	76	75
9	88	81	77	74	88	81	77	74	80	76	74	79	76	74	79	76	73	72
10	86	79	75	72	85	79	75	72	78	74	72	77	74	71	77	73	71	70



ZONAL LUMEN SUMMARY

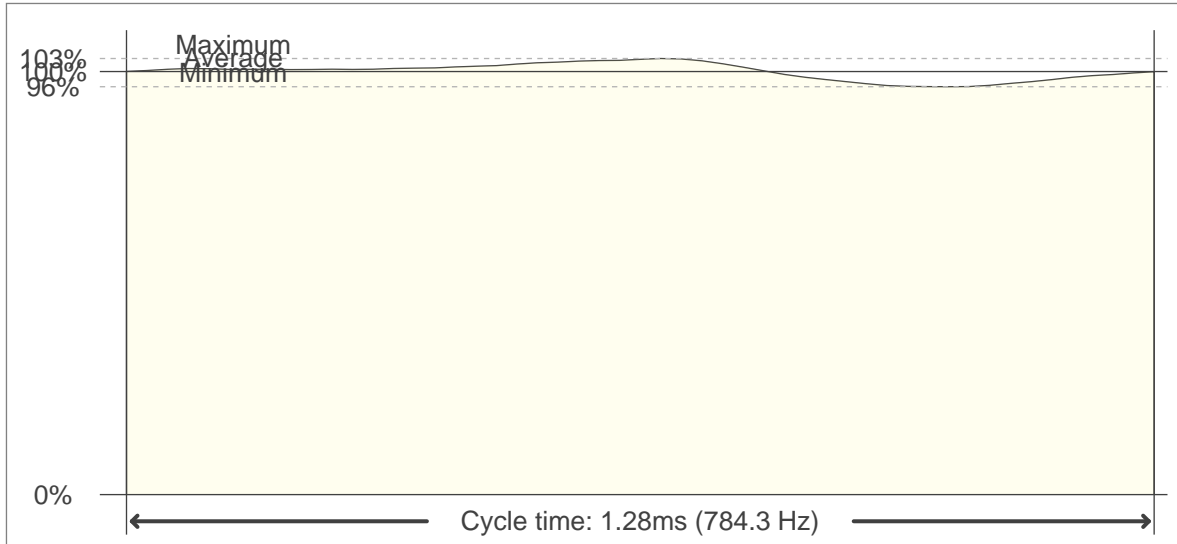
0°-10°	10°-20°	20°-30°	30°-40°	40°-50°	50°-60°	60°-70°	70°-80°	80°-90°
78.1 lm	100 lm	36.3 lm	11.2 lm	4.66 lm	2.78 lm	1.67 lm	0.406 lm	0.078 lm
90°-100°	100°-110°	110°-120°	120°-130°	130°-140°	140°-150°	150°-160°	160°-170°	170°-180°
0.061 lm	0.059 lm	0.065 lm	0.076 lm	0.108 lm	0.161 lm	0.169 lm	0.113 lm	0.031 lm

FLICKER

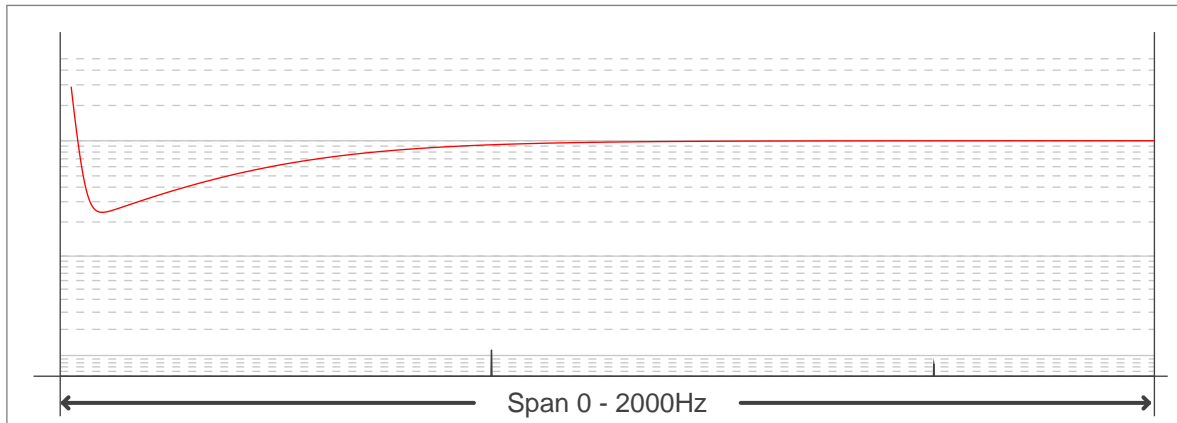
FLICKER CURVE (COMPLETE SAMPLED FLICKER)



FLICKER FRAME (FRAME OF ONE FLICKER PERIOD)



FLICKER FFT (FREQUENCY SCOPE OF FLICKER CURVE)



FLICKER RESULTS:

Flicker frequency:	784.31 Hz
Flicker index:	0.01
Flicker percentage:	3.72 %
SVM: (Visual flicker)	0.03

FLICKER CONDITIONS:

Sample rate:	40000 samples/second
--------------	----------------------