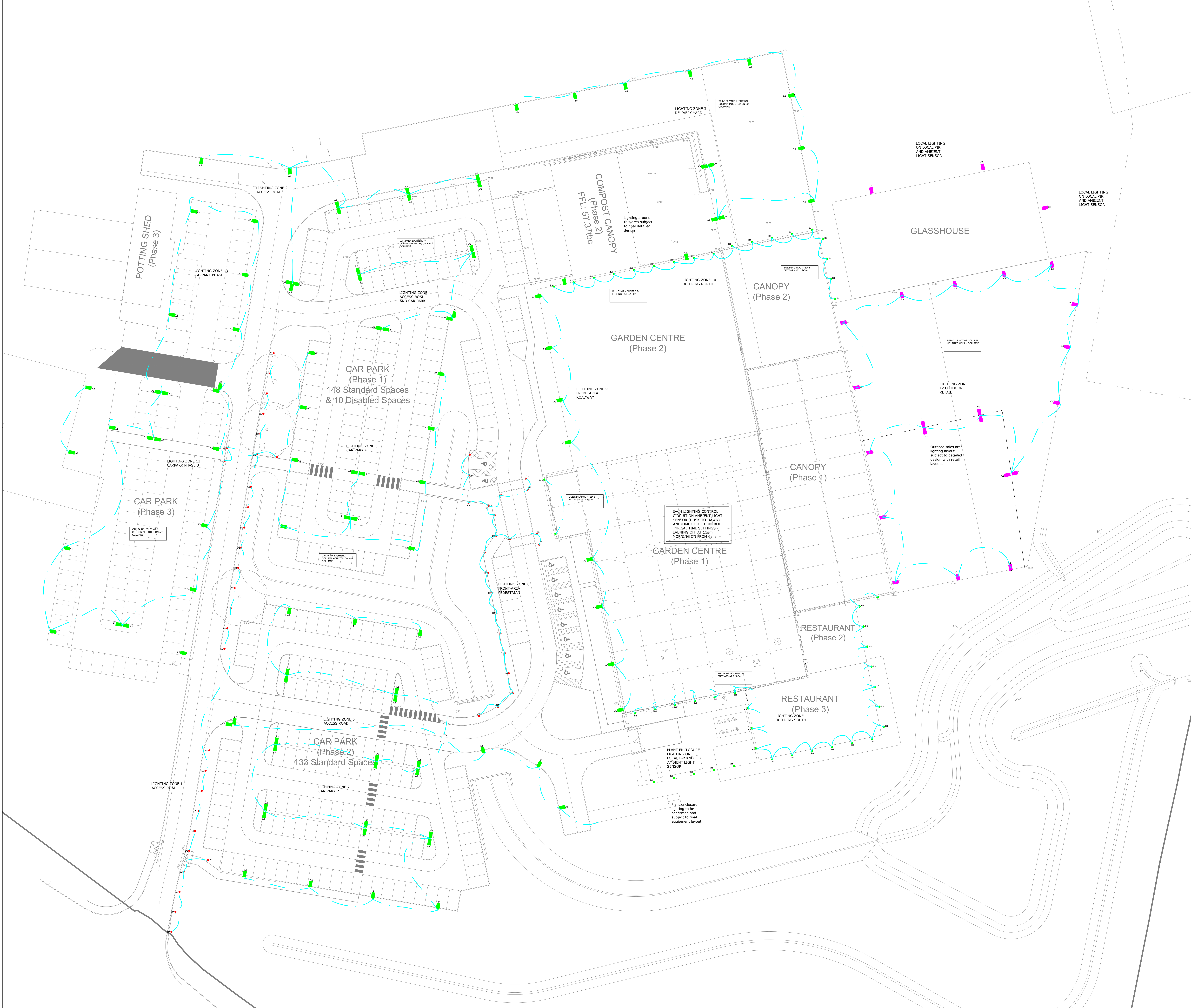
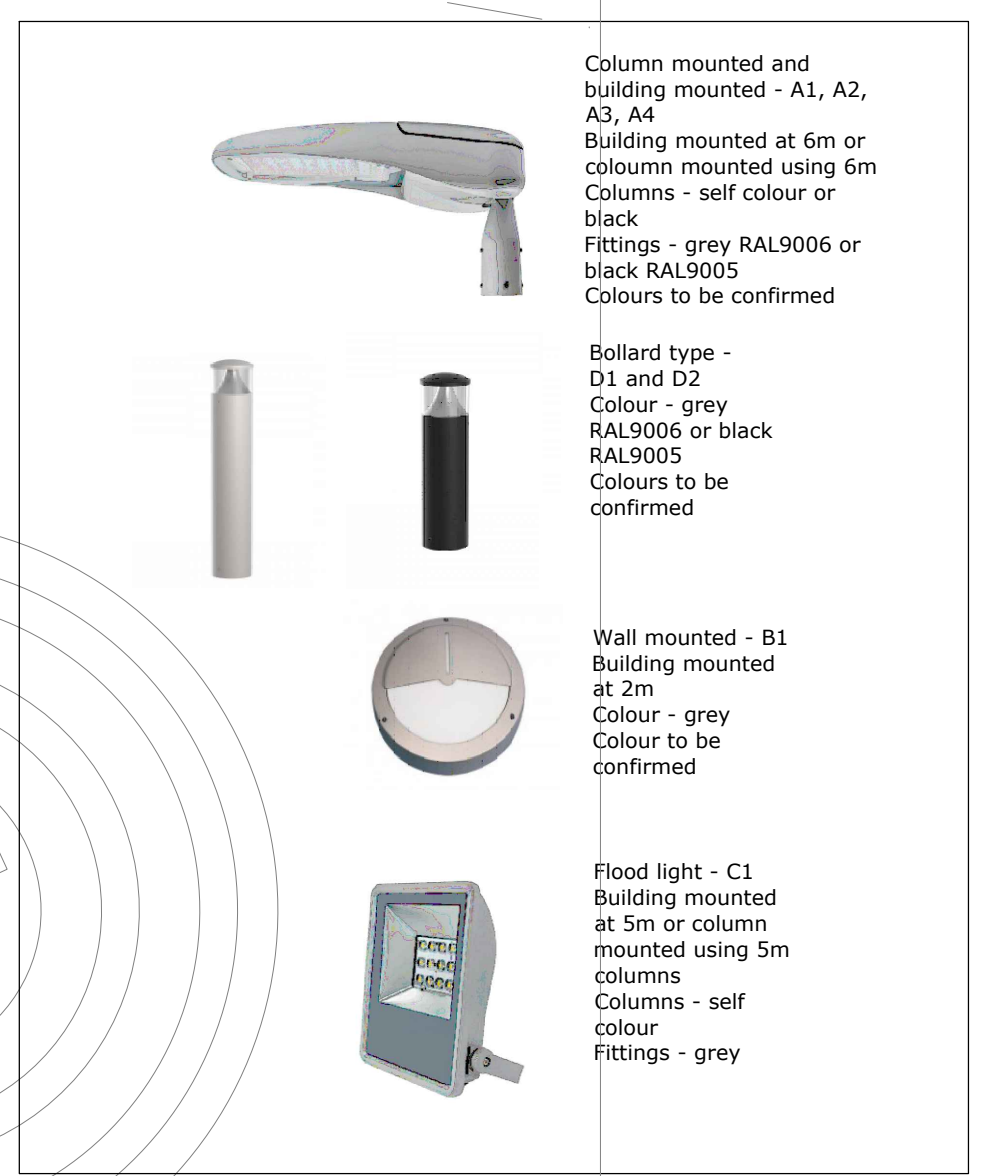


General Notes:  
 a. Do not scale this drawing.  
 b. This drawing to be read in conjunction with all other relevant drawing issues and specifications.  
 c. All building materials, component and workmanship to comply with the appropriate building regulations, British Standards and code of practice and the appropriate manufacturers recommendations.  
 d. For all specialist work see relevant drawings.  
 e. Any discrepancies, errors or omissions are to be reported to the project co-ordinator for further instructions before commencement of works.  
 f. The engineer is not responsible for dimensions. All setting out information, dimensions etc shall be calculated from the architects drawings. For dimensioned layouts of all walls see architects drawings.  
 Notes:



INDICATIVE LIGHTING SCHEDULE	
A1	External column mounted LED IP65 L90 60K operating hours, DEXTRA OPUS COLUMN finished grey RAL9006 (tbc), >150mm/W, 2700K, Open area diffuser, 33.7W, 5.118lumens
A1E	E - with integrated emergency pack
A2	External column mounted LED IP65 L90 60K operating hours, DEXTRA OPUS COLUMN finished grey RAL9006 (tbc), >150mm/W, 2700K, Open area diffuser, 56.4W, 8.578lumens
A2E	E - with integrated emergency pack
A3	External wall mounted LED IP65 L90 60K operating hours, DEXTRA OPUS COLUMN finished grey RAL9006 (tbc), >150mm/W, 2700K, Open area diffuser, 33.7W, 5.118lumens
A3E	E - with integrated emergency pack
A4	External wall mounted LED IP65 L90 60K operating hours, DEXTRA OPUS COLUMN finished grey RAL9006 (tbc), >147mm/W, 2700K, Open area diffuser, 76W, 11.85lumens
A4E	E - with integrated emergency pack
B1	External wall mounted circular with half lit LED IP65 IK08 L90 60K operating hours, DEXTRA AMENITY EXTERIOR EYELED Finished MATT GREY (tbc), >78mm/W, 2700K, 11.8W, 9.90lumens
B1E	E - with integrated emergency pack
C1	External wall mounted adjustable flood light LED IP65 L90 60K operating hours, DEXTRA OPUS 3M finished standard, >1495mm/W, 2700K, 54.3W, 8095lumens
C1E	E - with integrated emergency pack
D1	External roof mounted bollard wall mounted adjustable flood light LED IP65 IK10 WHITEGLOFT KOLLO BOLLARD, ASYMMETRIC, finished BLACK (tbc), 998mm high, >77mm/W, 2700K, 9.1W, 703lumens
D1E	E - with integrated emergency pack
D2	External roof mounted bollard wall mounted adjustable flood light LED IP65 IK10 WHITEGLOFT KOLLO BOLLARD, finished BLACK (tbc), 998mm high, >108mm/W, 2700K, 13.8W, 1500lumens
D2E	E - with integrated emergency pack



EACH LIGHTING CONTROL CIRCUIT ON AMBIENT LIGHT SENSOR (LOCK-TO-DRAW) AND TIME CLOCK CONTROL - TYPICAL TIME SETTINGS - EVENING OFF AT 11pm - MORNING ON FROM 5am

Plant enclosure lighting to be confirmed and subject to final equipment layout

Rev	Description	Dm	Chk	Date
Client <b>Perrywood</b>				
Project <b>New Garden Centre Sudbury</b>				
Drawing <b>External site plan External lighting layout</b>				
Scale	Date	Drawn by	Checked	
1:300@A0	Nov 23	TEW	nw	

Status  
**PLANNING**

THE ENGINEERING WORKSHOP LLP  
 Elizabeth Road  
 Biddow Road  
 Chatterton  
 Essex CM2 8DG  
 01246 206861  
 general@theengineeringworkshop.com  
 www.theengineeringworkshop.com

Document Reference:  
**2322-TEW-ZZ-XX-DR-E-4010-S0-P03**