

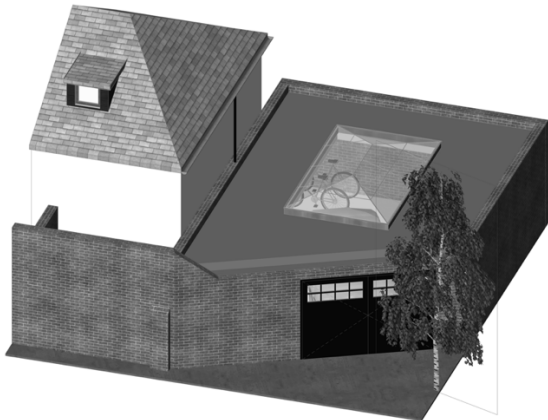
NON MATERIAL AMENDMENT STATEMENT

23A LEE TERRACE LONDON SE3 9TE

This non-material application involves setting back the large lantern rooflight 3m away from the heritage wall shown in the picture below to allow for an internal up and over door mechanism. The amended lantern rooflight will also be made smaller. Please see drawings 011-014 which accompany this application.



Picture showing heritage wall



As approved design planning ref: DC/23/132296 Dated: 05/09/2023

Prepared by

italon

Designhomeplan Ltd
19 December 2023