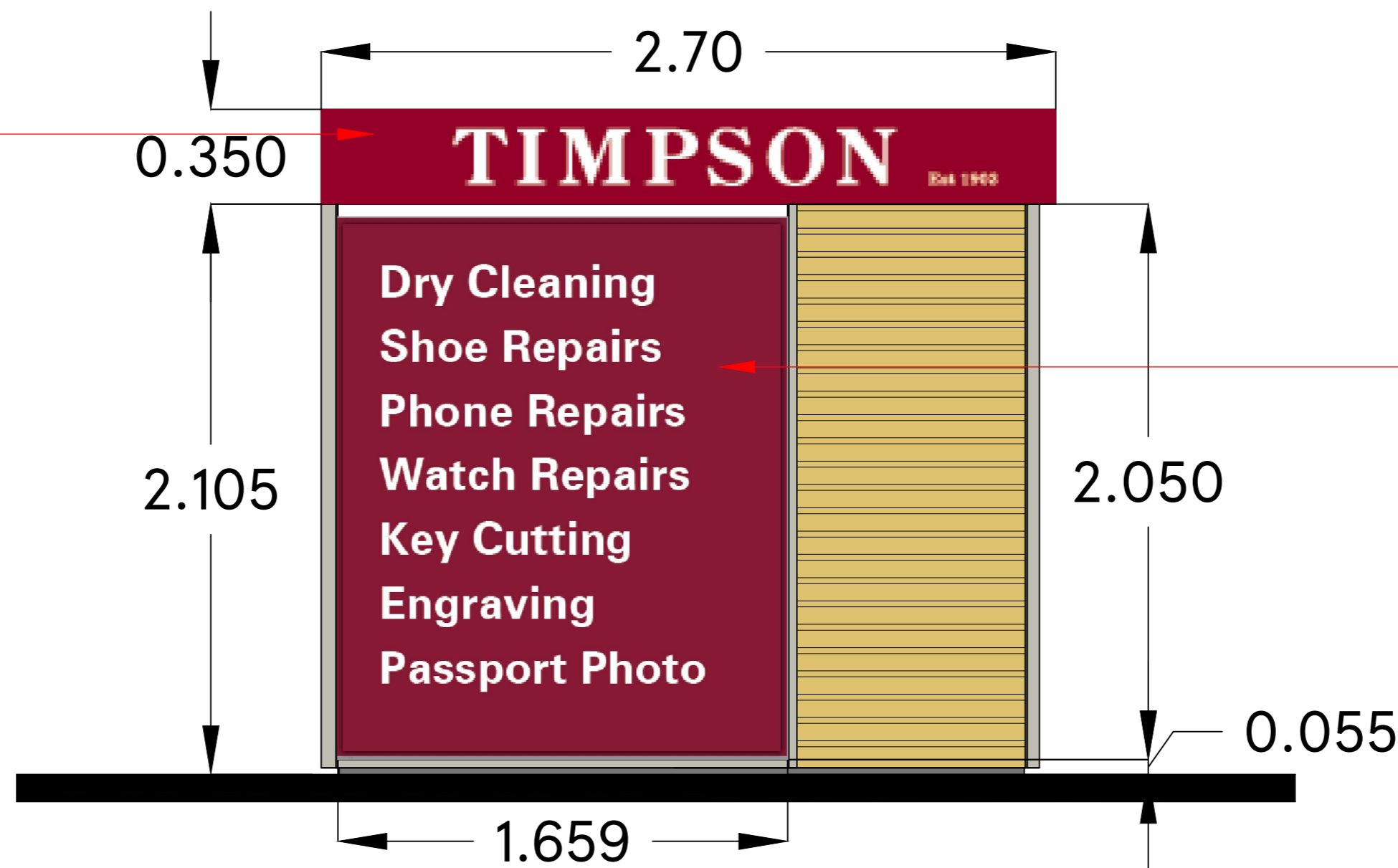


ELEVATION C-C

2mm Thk. Fabricated Aluminum Panel finished Burgundy (semi-gloss) C/W illumination light-box for internal illumination (by LED's) Timpsons 5mm thick fret-cut opal acrylic pushed through face & adhered to 3mm thick opal acrylic carrier panel C/W clamps
Est 1903: vinyl graphic applied

SIGN 2
2.70x0.35M



SIGN 4
1.659x2.05M

2mm thick fabricated aluminium panel (including 20mm flange to all sides) finished burgundy (semi-gloss) with full colour digital print (gloss-laminated) applied

ELEVATION D-D

SCALE BAR



DRAWING NO
03_TIMP_03B

SCALE 1:20@A2 DATE 20-Oct-2021

CHECKED BY ANDY HORWOOD
DRAWN BY SHIKHA

STORE TYPE
TIMPSON'S POD ADVERT DETAILS

CONTENT
TYPICAL ELEVATIONS-2

TESCO
FEASIBILITY PLANNING
STORE PLANNING DEPARTMENT
PROPERTY SERVICES
HIGHWOODS BUILDING, KESTREAL WAY
WELWYN GARDEN CITY, HERTFORDSHIRE, AL7 1GB UK
TELEPHONE : 01707 395150
THE COPYRIGHT AND ALL OTHER RIGHTS IN AND RELATING TO THE PUBLICATION BELONG TO AND ARE THE SOLE PROPERTY OF TESCO STORES LIMITED. ALL RIGHTS ARE RESERVED. NEITHER THE WHOLE NOR ANY PART OF THIS PUBLICATION MAY BE REPRODUCED OR TRANSMITTED IN ANY FORM OR BY ANY ELECTRONIC OR MECHANICAL MEANS INCLUDING PHOTOCOPIING AND RECORDING OR FROM ANY RETRIEVAL SYSTEM WITHOUT THE PRIOR WRITTEN LICENCE FROM THE OWNER. ©1997 TESCO STORES LIMITED