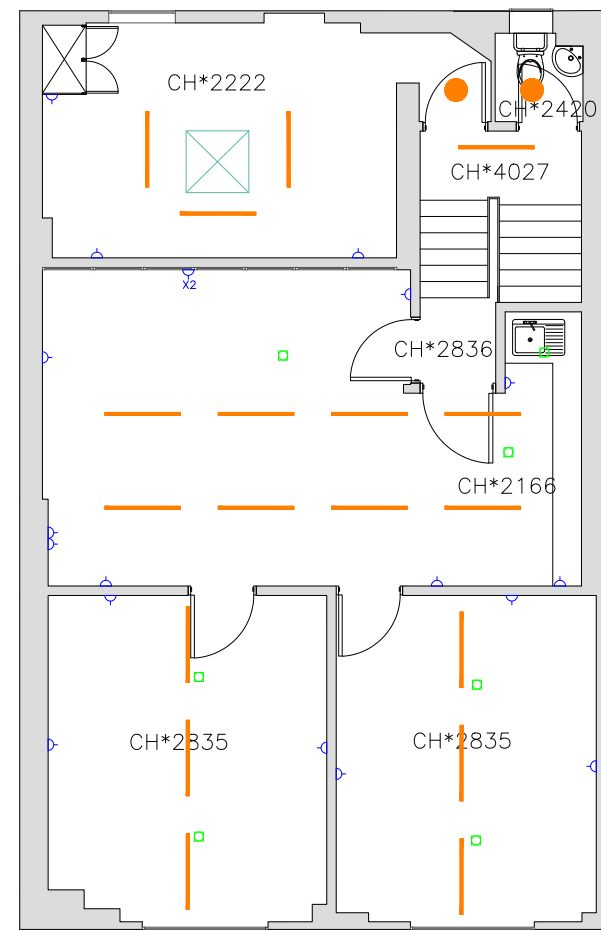
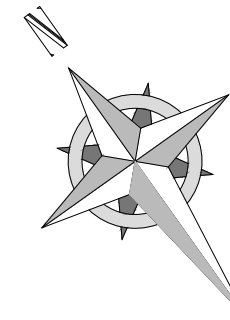


GROUND FLOOR



FIRST FLOOR

KEY	
	LIGHTING
	2 PLUG SOCKET
	PIR



THINKING SPACE Design and Build Ltd
 Switchboard: 0207 518 0341
 London Office - Landmark House, 17 Hanover Square, W1S 1HU

Client

Project

Scale

Drawn

Unit 2, 17-19 Blackwater Street, East Dulwich, London SE22 8SD

1:100@A3

YC

Drawing

Date

Rev

Proposed Ground Floor and First Floor
 Unit 2, 17-19 Blackwater Street, East Dulwich, London SE22 8SD

1st Nov 2023

Drawing No.

SP01-GHCP5R

IMPORTANT
 Copyright of this drawing belongs to and is vested in THINKING SPACE Design & Build Ltd. It may not be reproduced or distributed in any way or for any purpose without written consent by THINKING SPACE Design & Build Ltd. Any Persons, firm or company unlawfully reproducing or distributing this drawing or in anyway infringing the copyright therein will be prosecuted.
 In the event of any detail or dimensional conflict between drawings, the matter should be referred to THINKING SPACE Design & Build Ltd for clarification. Where dimensions are not given, **drawings must not be scaled.**
 Items within this plan may not be costed within the final budget and contract, and have been included for indicative purposes only.