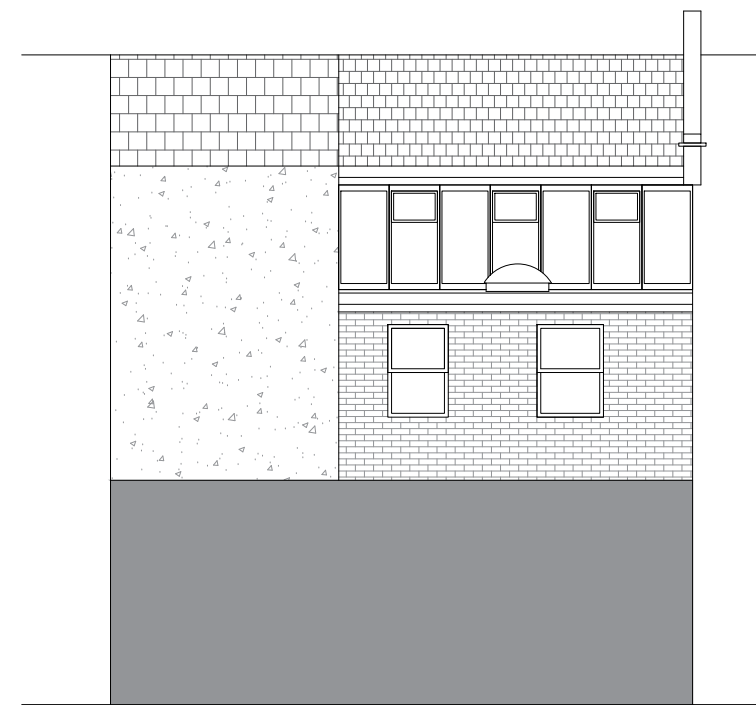
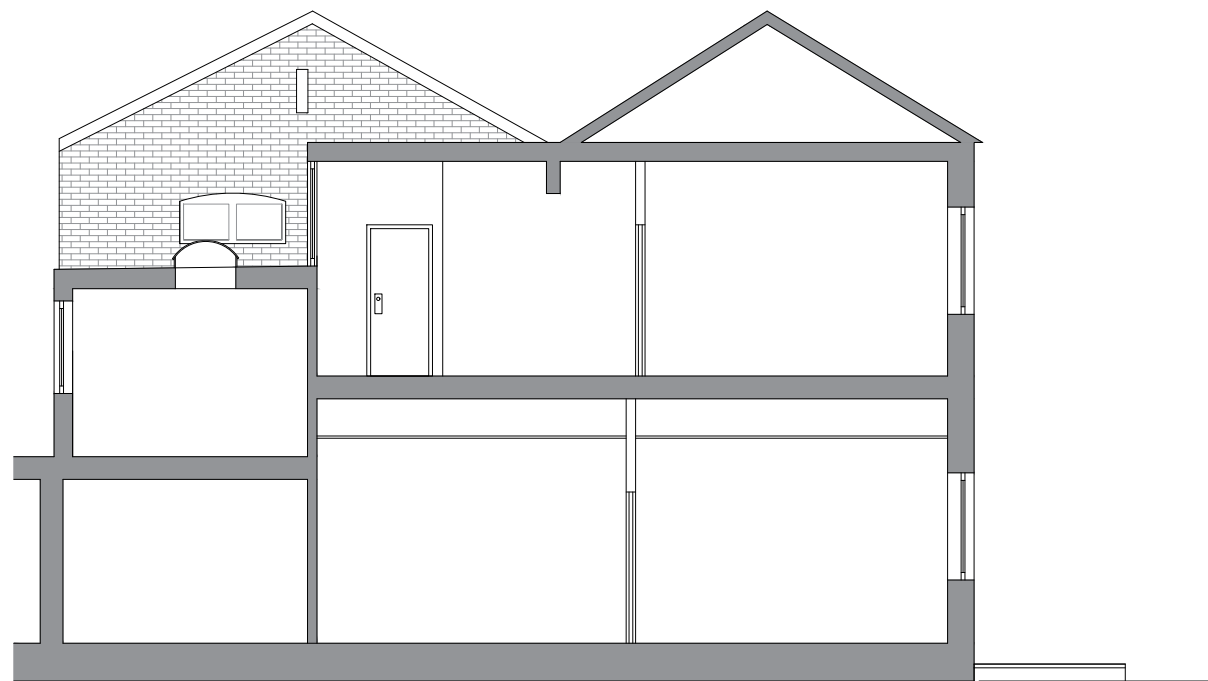


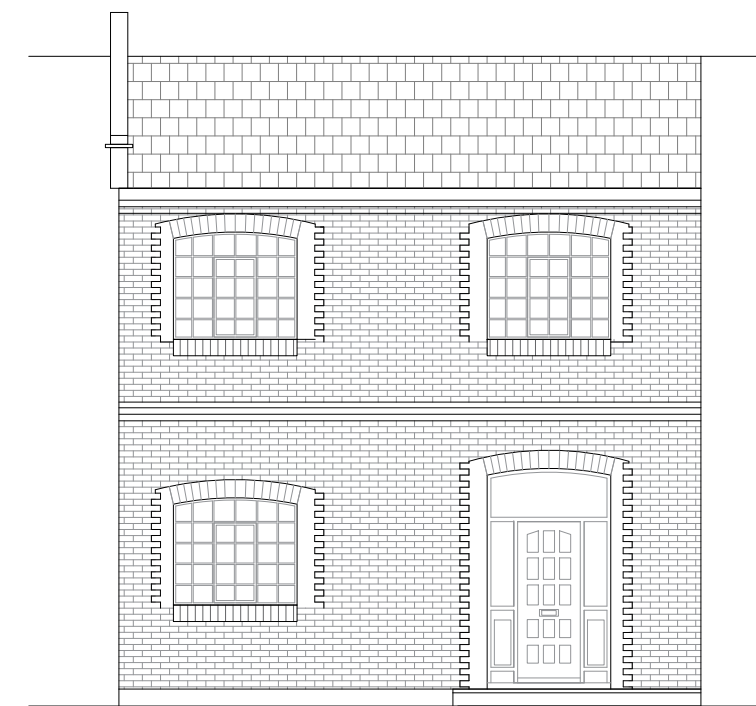
EAST ELEVATION / SECTION



SOUTH ELEVATION



WEST ELEVATION / SECTION



NORTH ELEVATION

**THINKING SPACE** Design and Build Ltd  
 Switchboard: 0207 518 0341  
 London Office - Landmark House, 17 Hanover Square, W1S 1HU

**Client**

**Project**

Unit 2, 17-19 Blackwater Street, East Dulwich, London SE22 8SD

**Drawing**

Existing Section and Elevation For Unit 2, 17-19 Blackwater Street, East Dulwich, London SE22 8SD

**Scale**

1:100@A3

**Date**

29th Sept 2023

**Drawing No.**

EX02-GHCP5R

**Drawn**

YC

**Rev**

**IMPORTANT**

Copyright of this drawing belongs to and is vested in THINKING SPACE Design & Build Ltd. It may not be reproduced or distributed in any way or for any purpose without written consent by THINKING SPACE Design & Build Ltd. Any Persons, firm or company unlawfully reproducing or distributing this drawing or in anyway infringing the copyright therein will be prosecuted.  
 In the event of any detail or dimensional conflict between drawings, the matter should be referred to THINKING SPACE Design & Build Ltd for clarification  
 Where dimensions are not given, **drawings must not be scaled.**

Items within this plan may not be costed within the final budget and contract, and have been included for indicative purposes only.