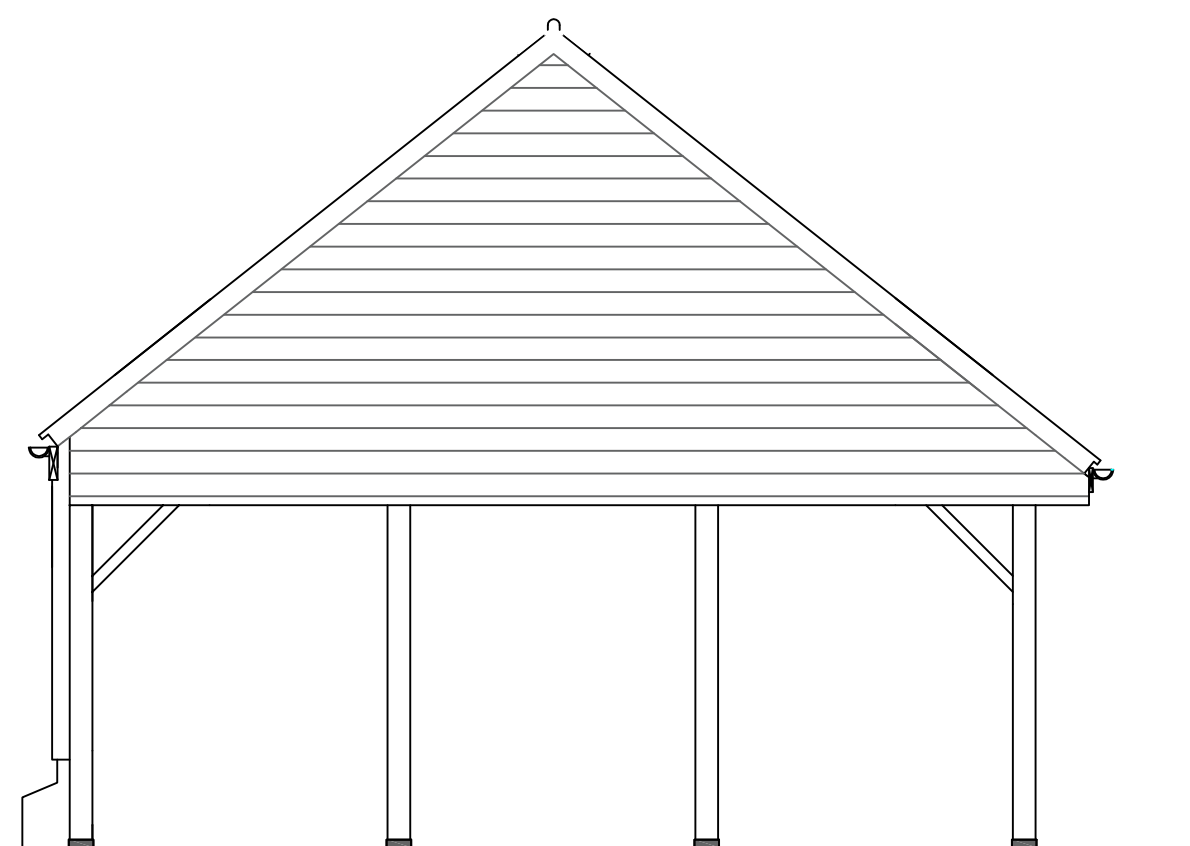
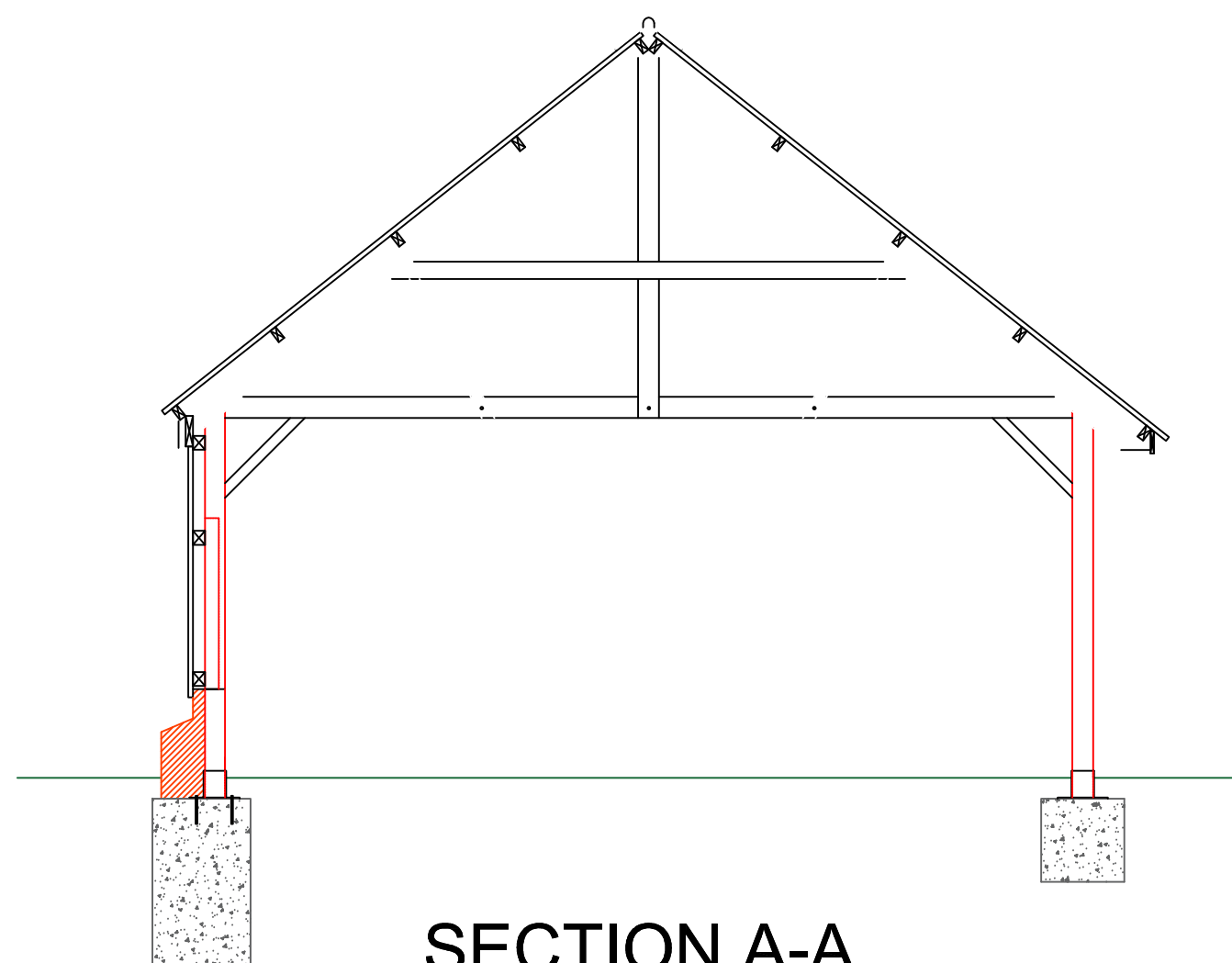


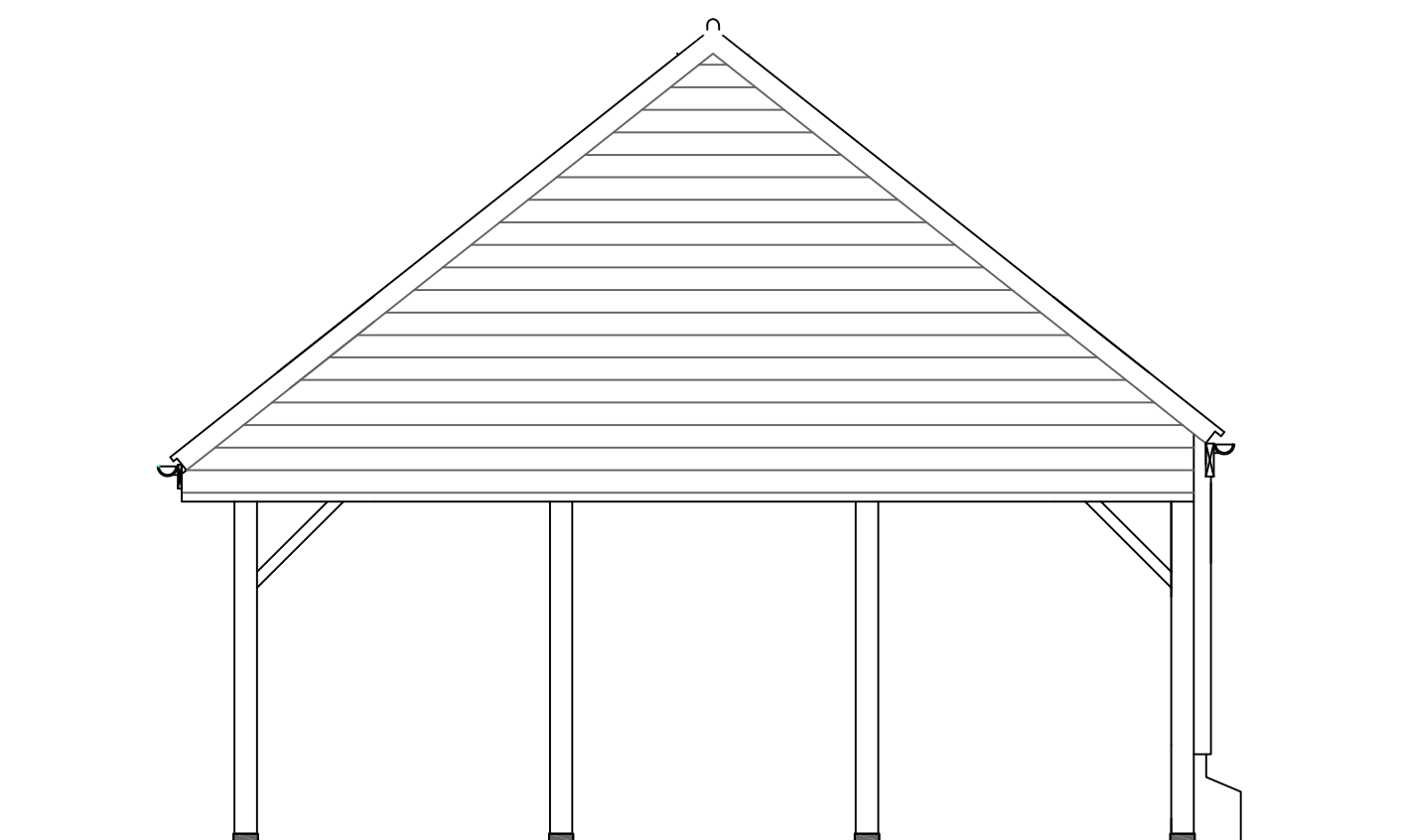
NORTH ELEVATION



WEST ELEVATION



SECTION A-A



EAST ELEVATION

EXTERNAL FINISHES

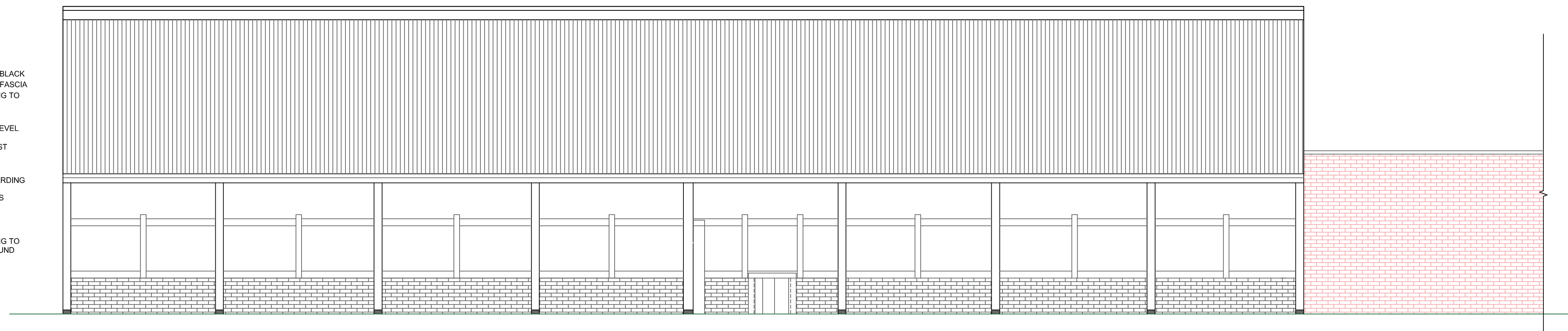
ROOF
CORRUGATED STEEL SHEETING WITH MATT BLACK FINISH COMPLETE
WITH ALL MATCHING RIDGE, EAVES, VERGE AND CORNER TRIMS

WALLS
NORTH WALL UPPER CLAD WITH CORRUGATED STEEL SHEETING WITH MATT BLACK
FINISH COMPLETE WITH ALL CORNER TRIMS BELOW BLACK STAINED TIMBER FASCIA
WITH BLACK ALUMINIUM HALF ROUND GUTTER AND DOWNPIPES DISCHARGING TO
DITCH VIA UNDERGROUND UPVC PIPEWORK

NORTH WALL LOWER SOFT RED SUFFOLK BRICKS IN LIME MORTAR TO LOW LEVEL
WALLING AND BUTTRESSES WITH TIMBER LIVESTOCK DOOR RETAINED
LOWER SECTION OF OAK POSTS EXPOSED AT EAST END IN BLACK STEEL POST
SHOES MIN 50MM ABOVE FINISHED GL

EAST AND WEST GABLES CLAD WITH SOFTWOOD TREATED HORIZONTAL BOARDING
TO MATCH ADJACENT THATCHED BARN CLADDING
OAK POSTS EXPOSED BELOW GABLE CLADDING IN BLACK STEEL POST SHOES
MIN 50MM ABOVE FINISHED GL

SOUTH WALL TO HAVE BLACK STAINED TIMBER FASCIA
WITH BLACK ALUMINIUM HALF ROUND GUTTER AND DOWNPIPES DISCHARGING TO
NEW SOAKAWAY BETWEEN HAY BARN AND THATCHED BARN VIA UNDERGROUND
UPVC PIPEWORK
OAK POSTS EXPOSED BELOW FASCIA IN BLACK STEEL POST SHOES
MIN 50MM ABOVE FINISHED GL



SOUTH ELEVATION

HAY BARN ELEVATIONS & SECTION AS PROPOSED

