



# The Sizewell C Project

Application for Listed Building Consent  
Upper Abbey Farm, Hay Barn and Cart Lodge  
Application Plans

---

Revision: 1.0


---

December 2023



NOTES:

KEY:

 APPLICATION LINE BOUNDARY

CART LODGE  
HAY BARN

Thatched Barn

Upper  
Abbey

16.7m

Upper Abbey Farm House

Track

Workings (dis)

01	DEC23	SB	NP	PLANNING APPLICATION SUBMISSION	-
REVISION	DATE	DRAWN	CHECKED	REASONS FOR REVISION / COMMENTS	APPROVED

NOT PROTECTIVELY MARKED

COPYRIGHT:

Reproduced from Ordnance Survey map with the permission of Ordnance Survey on behalf of the controller of His Majesty's Stationery Office © Crown copyright (2023). All Rights reserved. NNB GenCo Licence: 0100060408



PROJECT:  
SIZEWELL C

DOCUMENT:  
UPPER ABBEY FARM  
LISTED BUILDING CONSENT APPLICATION  
DRAWING FOR APPROVAL

DRAWING TITLE:  
UPPER ABBEY FARM  
LOCATION PLAN

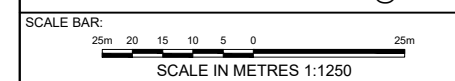
DRAWING NO:  
SZC-SZ0100-XX-000-DRW-100485

REVISION:  
01

DATE:  
DEC 2023

DRAWN:  
SB

SCALE:  
1:1250@A3





NOTES:

KEY:

APPLICATION LINE BOUNDARY

HAY BARN

CART LODGE

Thatched Barn

Upper Abbey

01	DEC23	SB	NP	PLANNING APPLICATION SUBMISSION	-
REVISION	DATE	DRAWN	CHECKED	REASONS FOR REVISION / COMMENTS	APPROVED

NOT PROTECTIVELY MARKED

COPYRIGHT:

Reproduced from Ordnance Survey map with the permission of Ordnance Survey on behalf of the controller of His Majesty's Stationery Office © Crown copyright (2023). All Rights reserved. NNB GenCo Licence: 0100060408



PROJECT:  
SIZEWELL C

DOCUMENT:  
UPPER ABBEY FARM  
LISTED BUILDING CONSENT APPLICATION  
DRAWING FOR APPROVAL

DRAWING TITLE:  
UPPER ABBEY FARM  
BLOCK PLAN

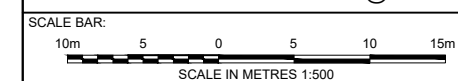
DRAWING NO:  
SZC-SZ0100-XX-000-DRW-100486

REVISION:  
01

DATE:  
DEC 2023

DRAWN:  
SB

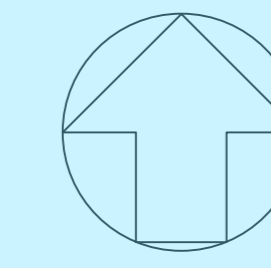
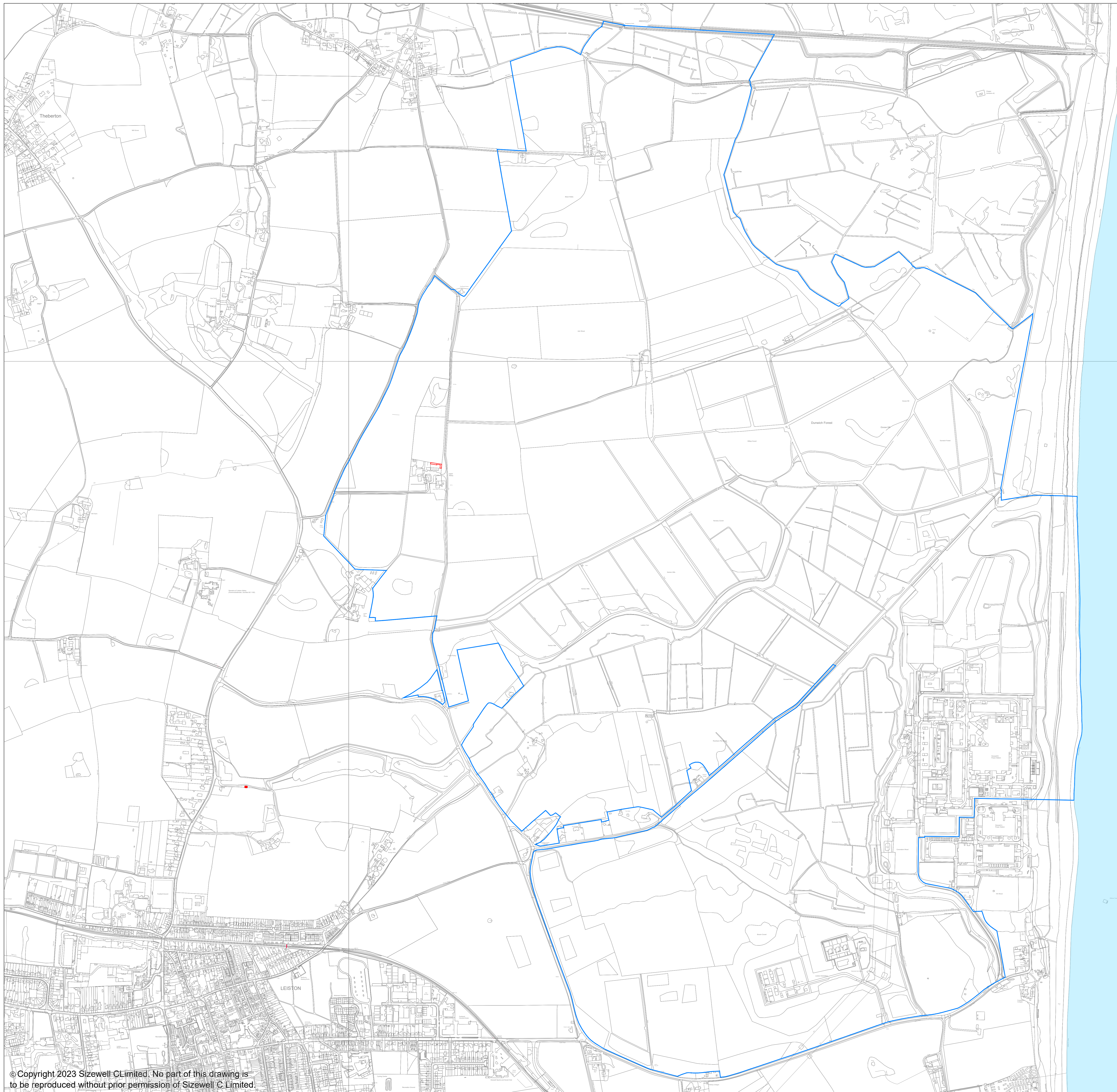
SCALE:  
1:500@A3



Upper Abbey Farm House

16.7m

Track



**NOTES:**

**KEY:**

- APPLICATION LINE BOUNDARY
- EDF ENERGY NUCLEAR GENERATION LTD  
SIZEWELL LAND BOUNDARY

REVISION	DATE	DRAWN	CHECKED	REASONS FOR REVISION / COMMENTS	APPROVED
01	DEC 23	SB	NP	PLANNING APPLICATION SUBMISSION	

**NOT PROTECTIVELY MARKED**

**COPYRIGHT:**  
 Reproduced from Ordnance Survey map with the permission of Ordnance Survey on behalf of the controller of His Majesty's Stationery Office © Crown copyright (2023).  
 All Rights reserved. NNB GenCo Licence: 0100060408



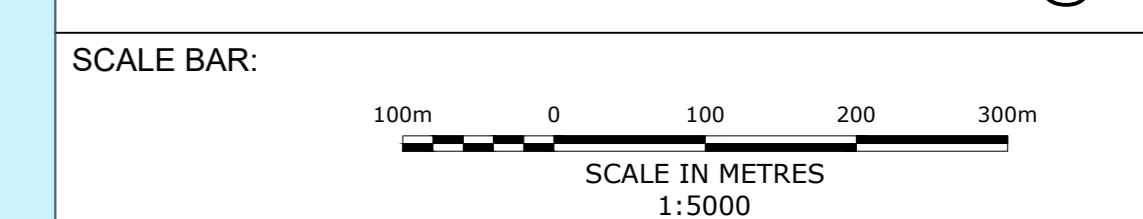
**PROJECT:**  
 SIZEWELL C

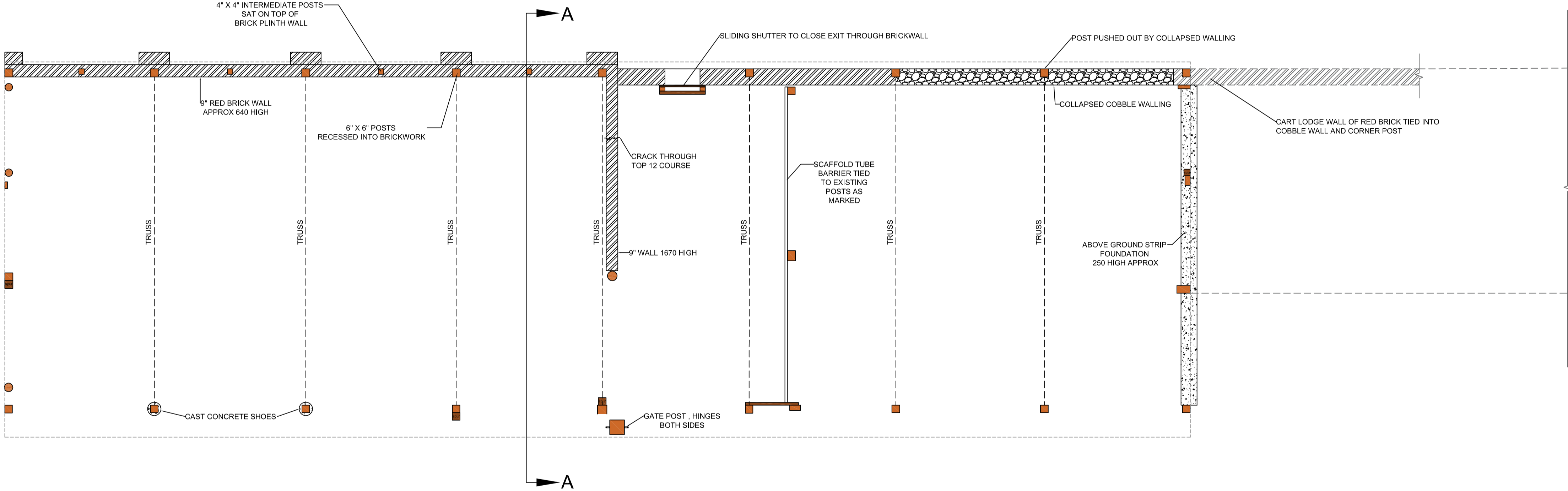
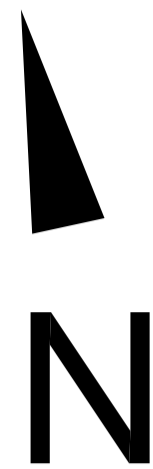
**DOCUMENT:**  
 UPPER ABBEY FARM  
 LISTED BUILDING CONSENT APPLICATION  
 DRAWING FOR APPROVAL

**DRAWING TITLE:**  
 SIZEWELL OWNERSHIP BOUNDARY

**DRAWING NO:** SZC-SZ0100-XX-000-DRW-100487 **REVISION:** 01

**DATE:** DEC 2023 **DRAWN:** SB **SCALE:** 1:5000@A0

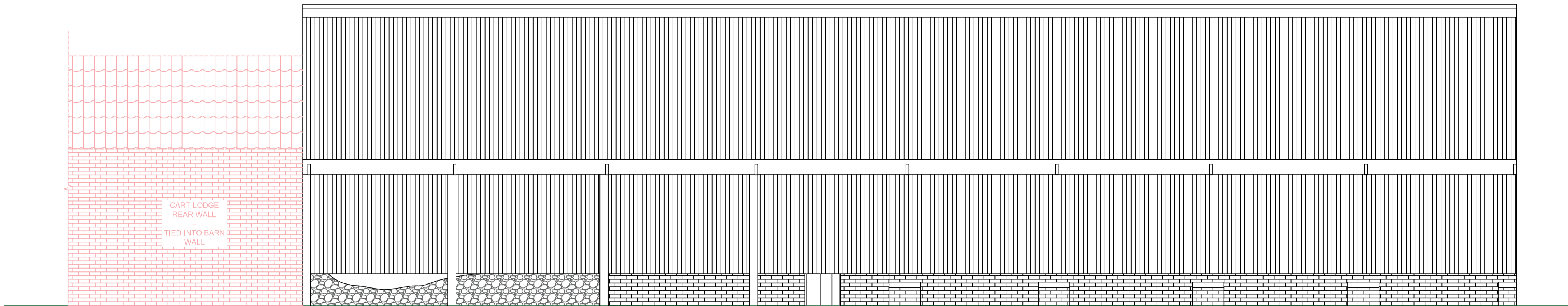




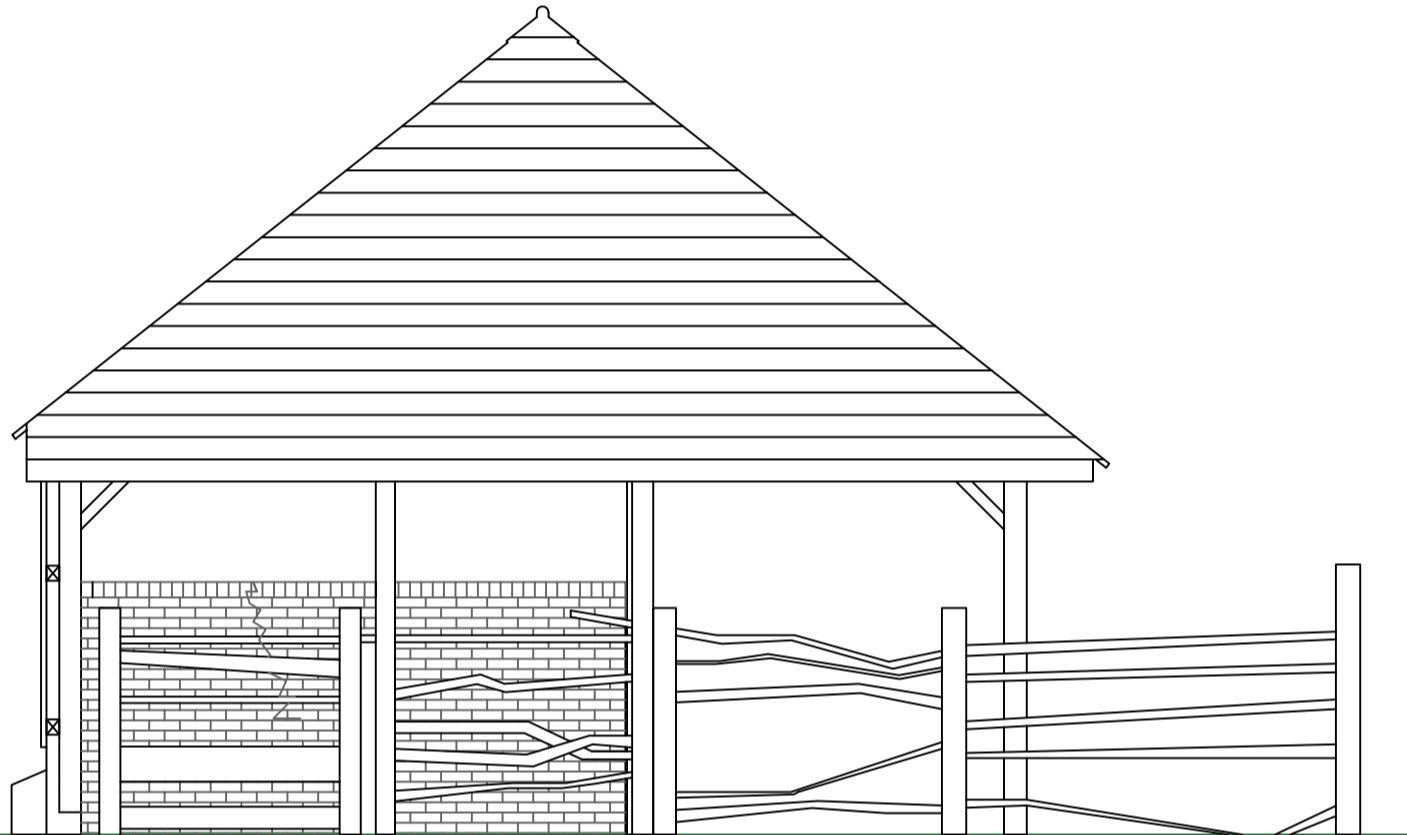
HAY BARN FLOOR PLAN

# HAY BARN FLOOR PLAN AS EXISTING

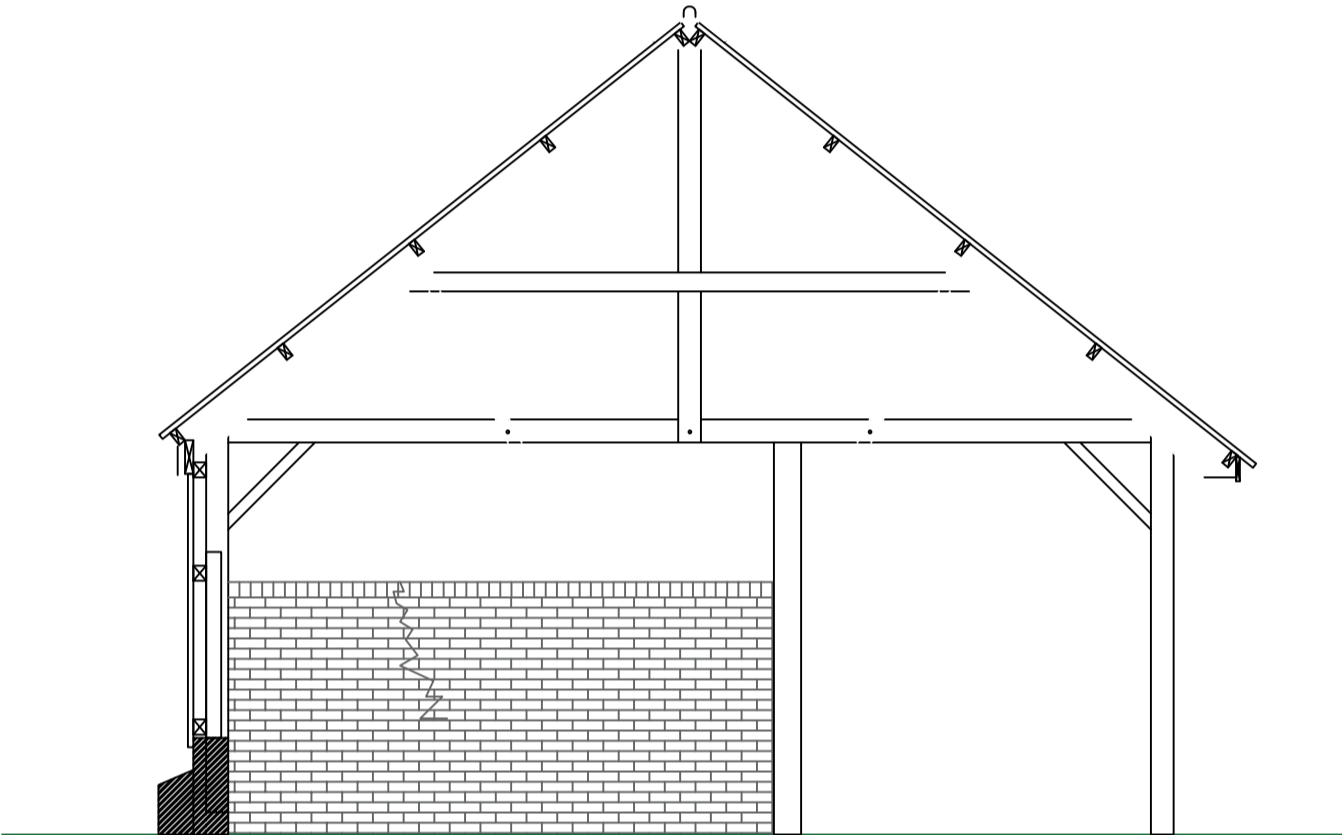




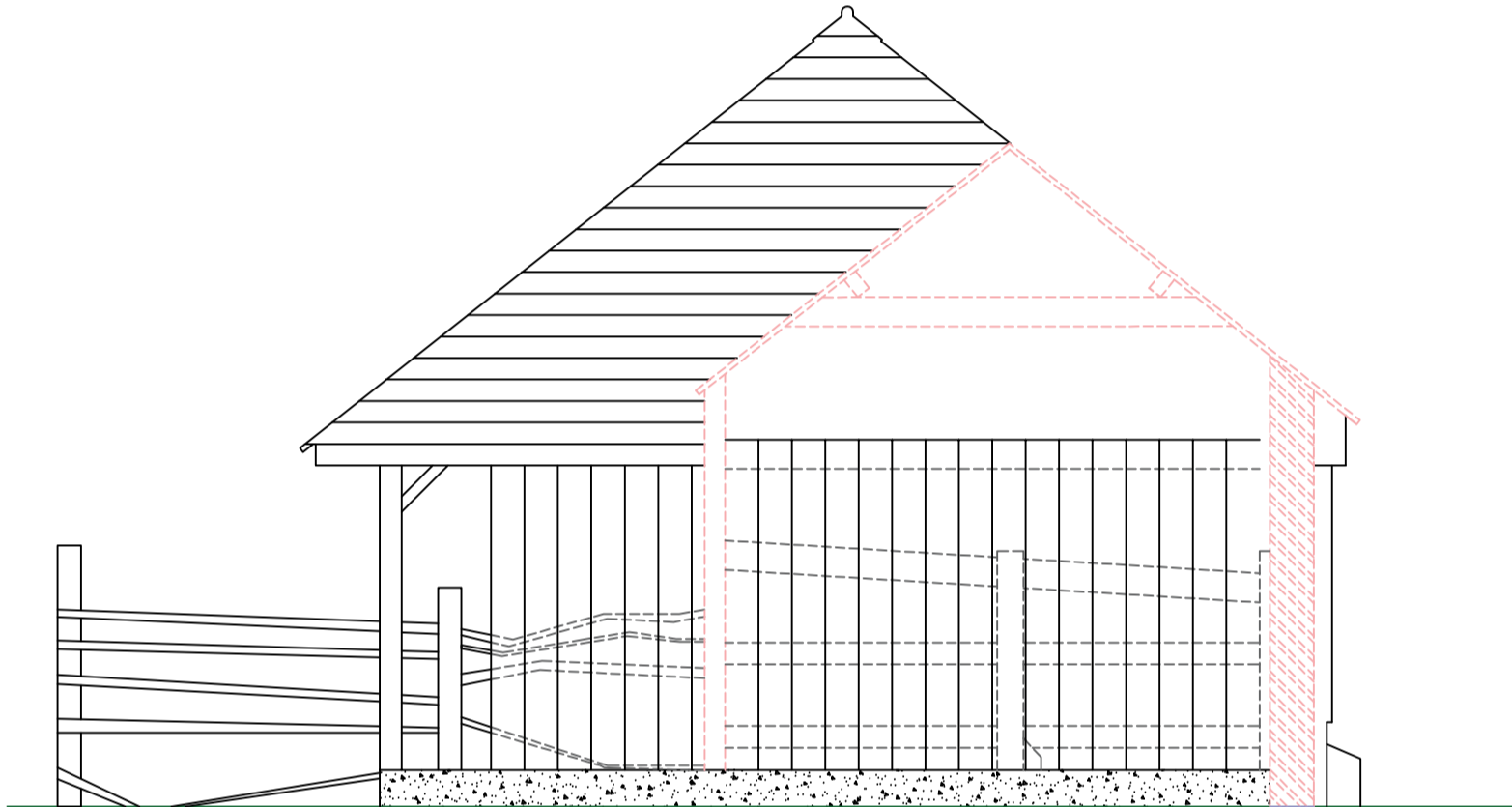
NORTH ELEVATION



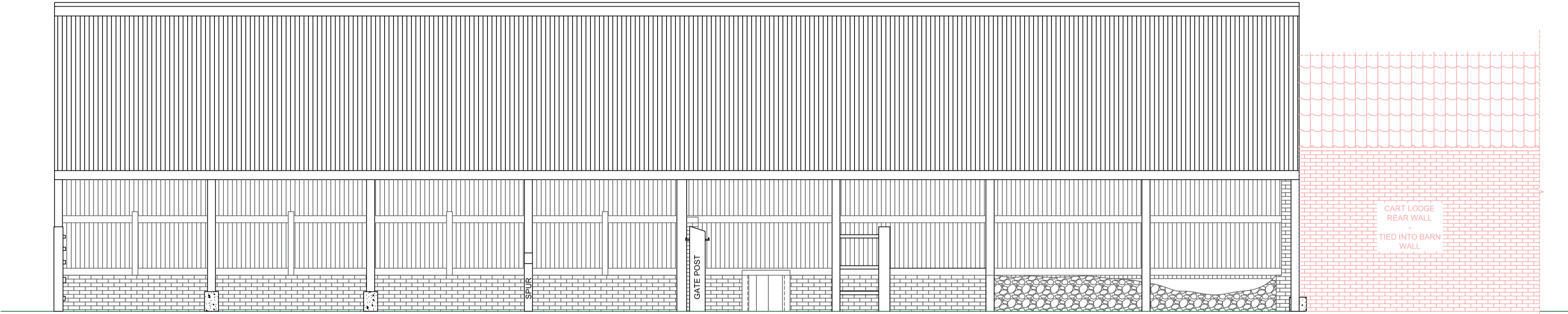
WEST ELEVATION



SECTION A-A

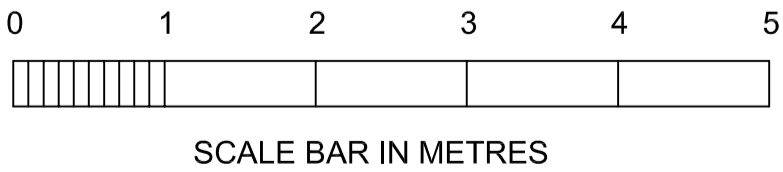


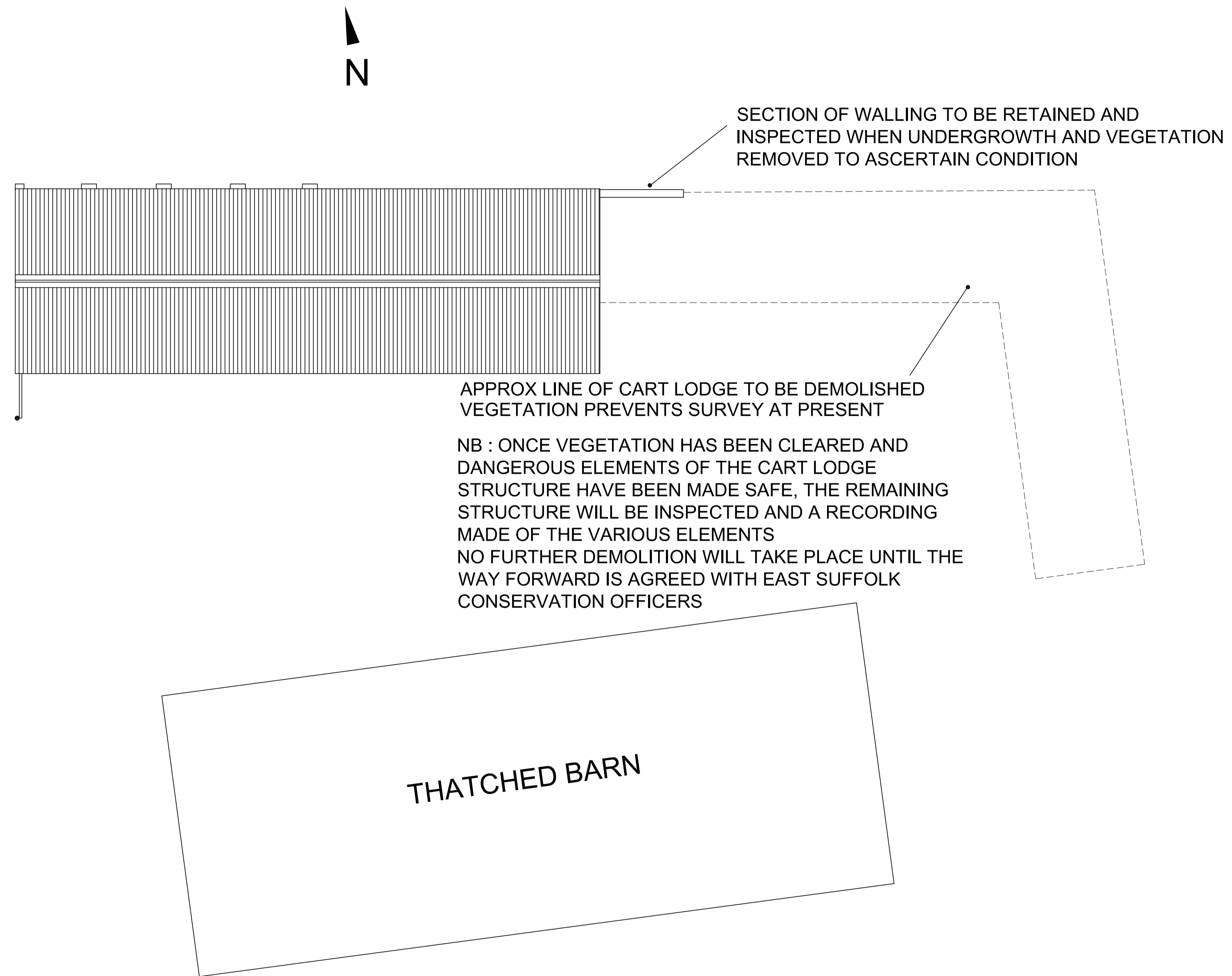
EAST ELEVATION



SOUTH ELEVATION

# HAY BARN ELEVATIONS & SECTION AS EXISTING





## SITE PLAN - APPROX POSITION OF CART LODGE DOTTED

EXTERNAL FINISHES

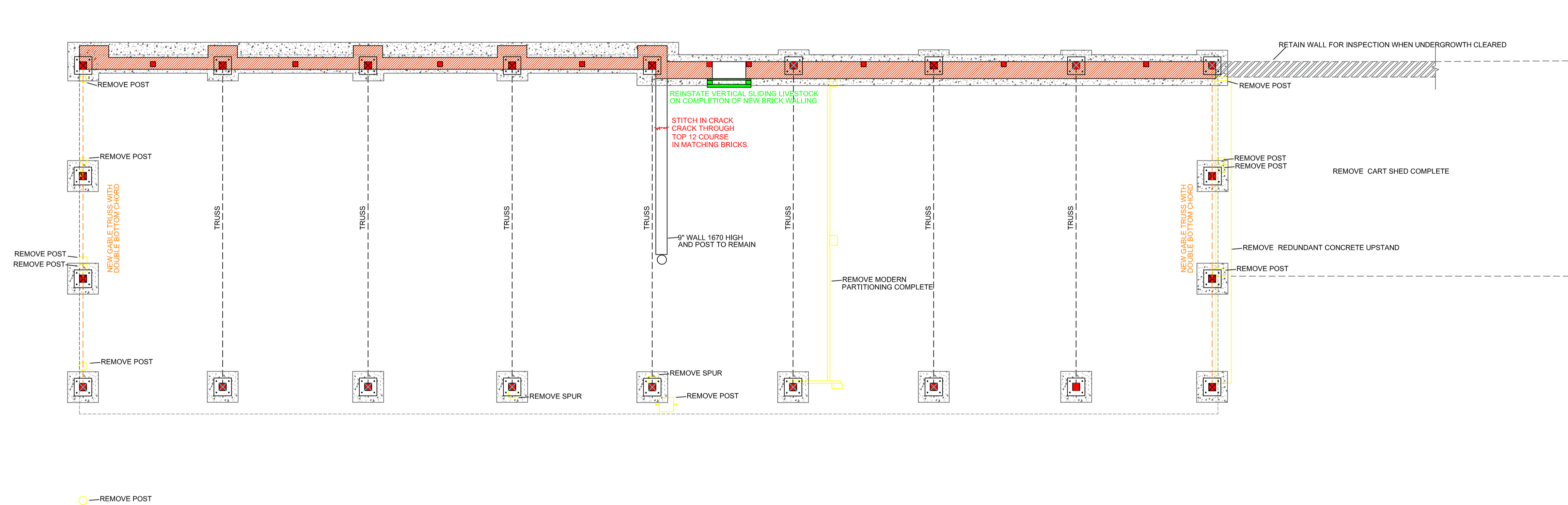
ROOF  
CORRUGATED STEEL SHEETING WITH MATT BLACK FINISH COMPLETE  
WITH ALL MATCHING RIDGE, EAVES, VERGE AND CORNER TRIMS

WALLS  
NORTH WALL UPPER CLAD WITH CORRUGATED STEEL SHEETING WITH MATT BLACK  
FINISH COMPLETE WITH ALL CORNER TRIMS BELOW BLACK STAINED TIMBER FASCIA  
WITH BLACK ALUMINIUM HALF ROUND GUTTER AND DOWNPIPES DISCHARGING TO  
DITCH VIA UNDERGROUND UPVC PIPEWORK

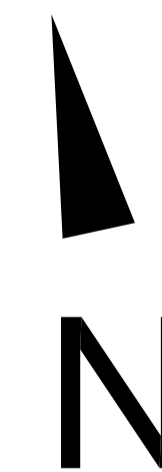
NORTH WALL LOWER SOFT RED SUFFOLK BRICKS IN LIME MORTAR TO LOW LEVEL  
WALLING AND BUTTRESSES WITH TIMBER LIVESTOCK DOOR RETAINED  
LOWER SECTION OF OAK POSTS EXPOSED AT EAST END IN BLACK STEEL POST  
SHOES MIN 50MM ABOVE FINISHED GL

EAST AND WEST GABLES CLAD WITH SOFTWOOD TREATED HORIZONTAL BOARDING  
TO MATCH ADJACENT THATCHED BARN CLADDING  
OAK POSTS EXPOSED BELOW GABLE CLADDING IN BLACK STEEL POST SHOES  
MIN 50MM ABOVE FINISHED GL

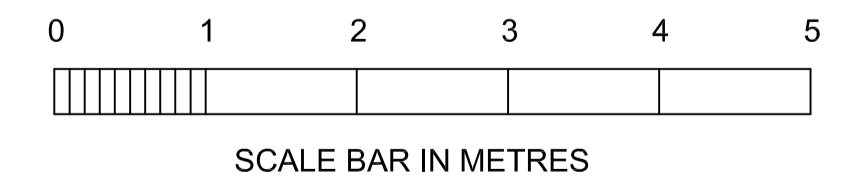
SOUTH WALL TO HAVE BLACK STAINED TIMBER FASCIA  
WITH BLACK ALUMINIUM HALF ROUND GUTTER AND DOWNPIPES DISCHARGING TO  
NEW SOAKAWAY BETWEEN HAY BARN AND THATCHED BARN VIA UNDERGROUND  
UPVC PIPEWORK  
OAK POSTS EXPOSED BELOW FASCIA IN BLACK STEEL POST SHOES  
MIN 50MM ABOVE FINISHED GL



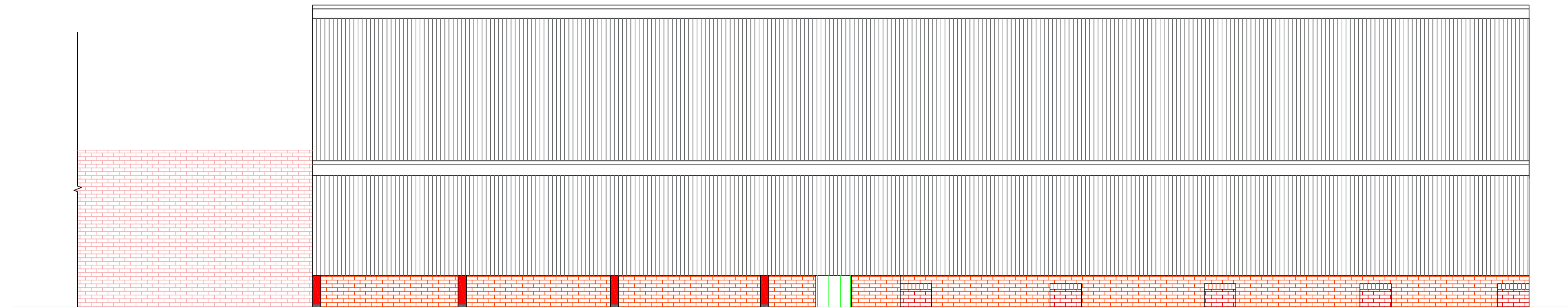
HAY BARN FLOOR PLAN



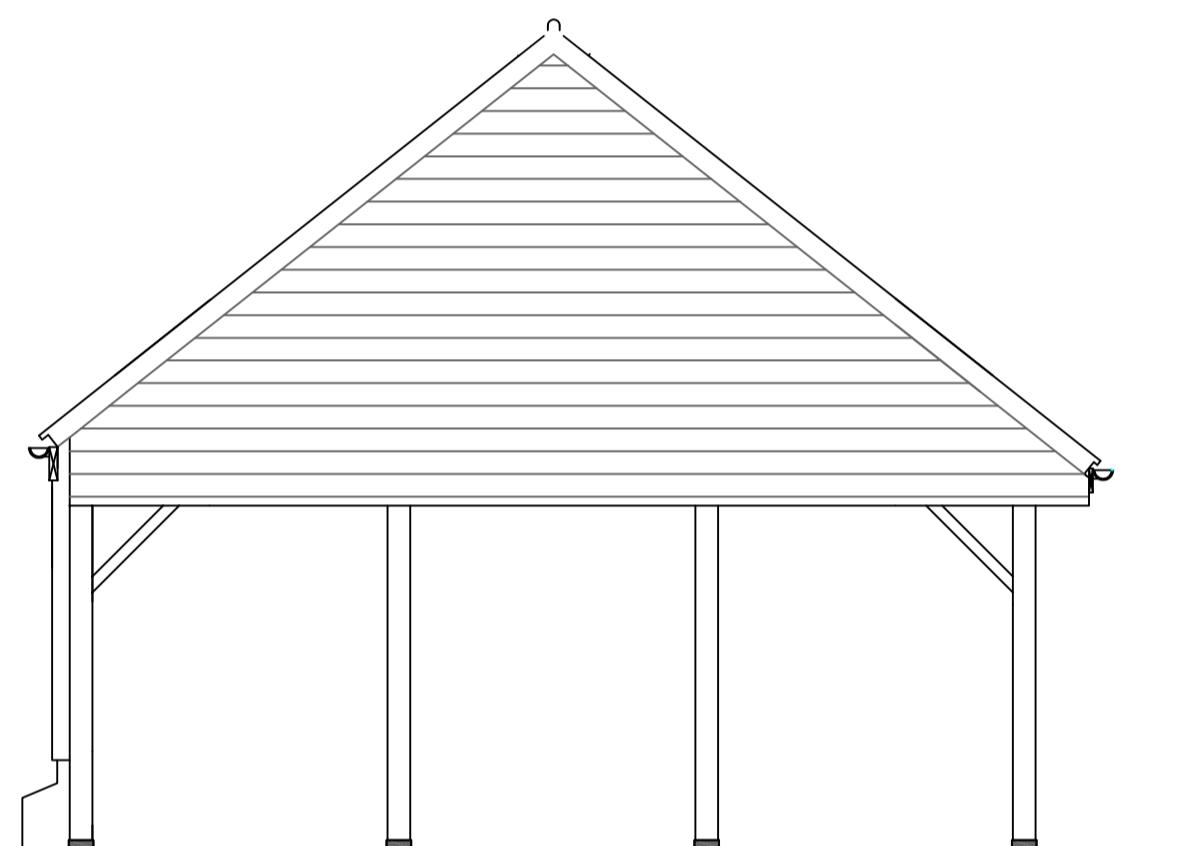
HAY BARN FLOOR PLAN AS PROPOSED



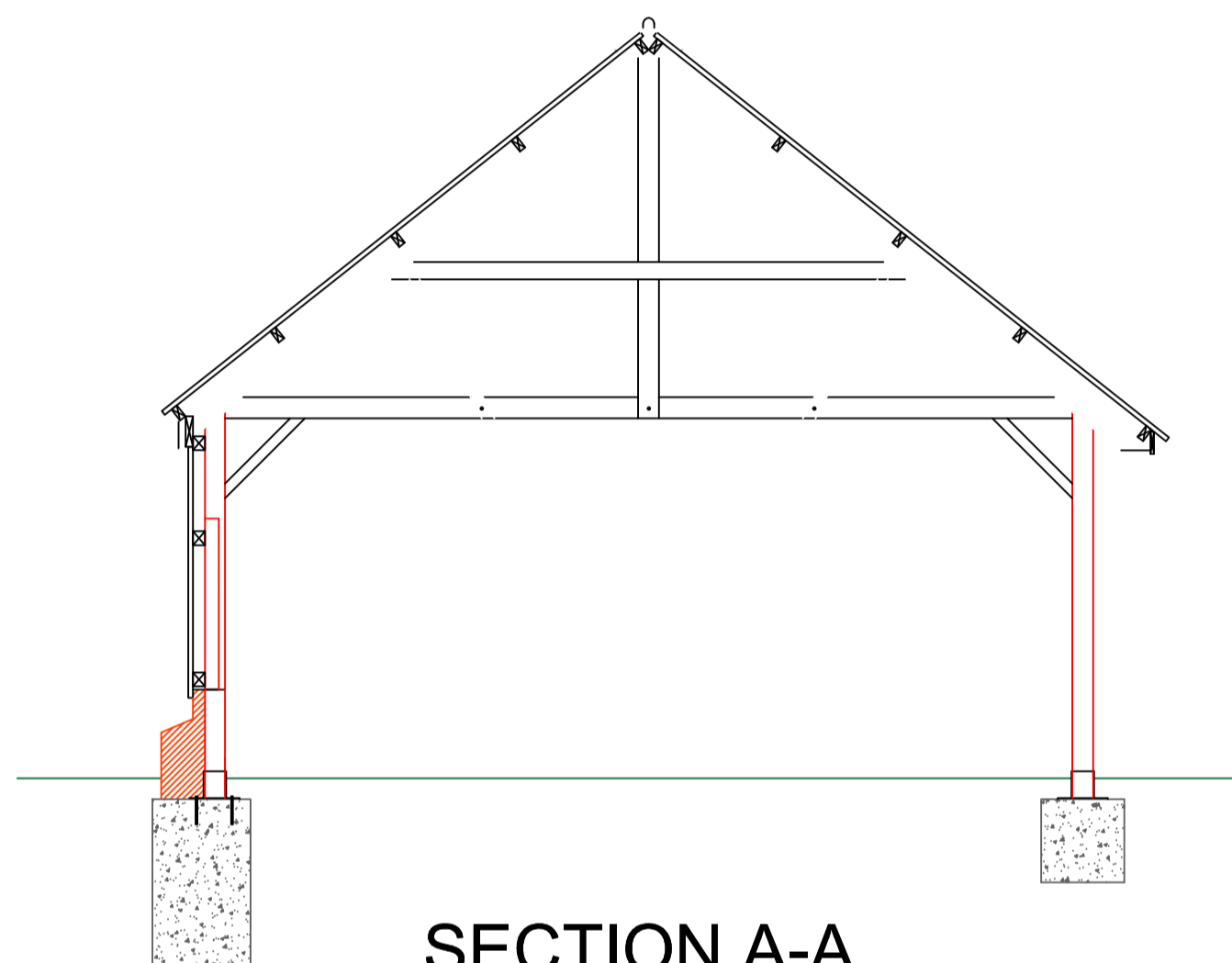




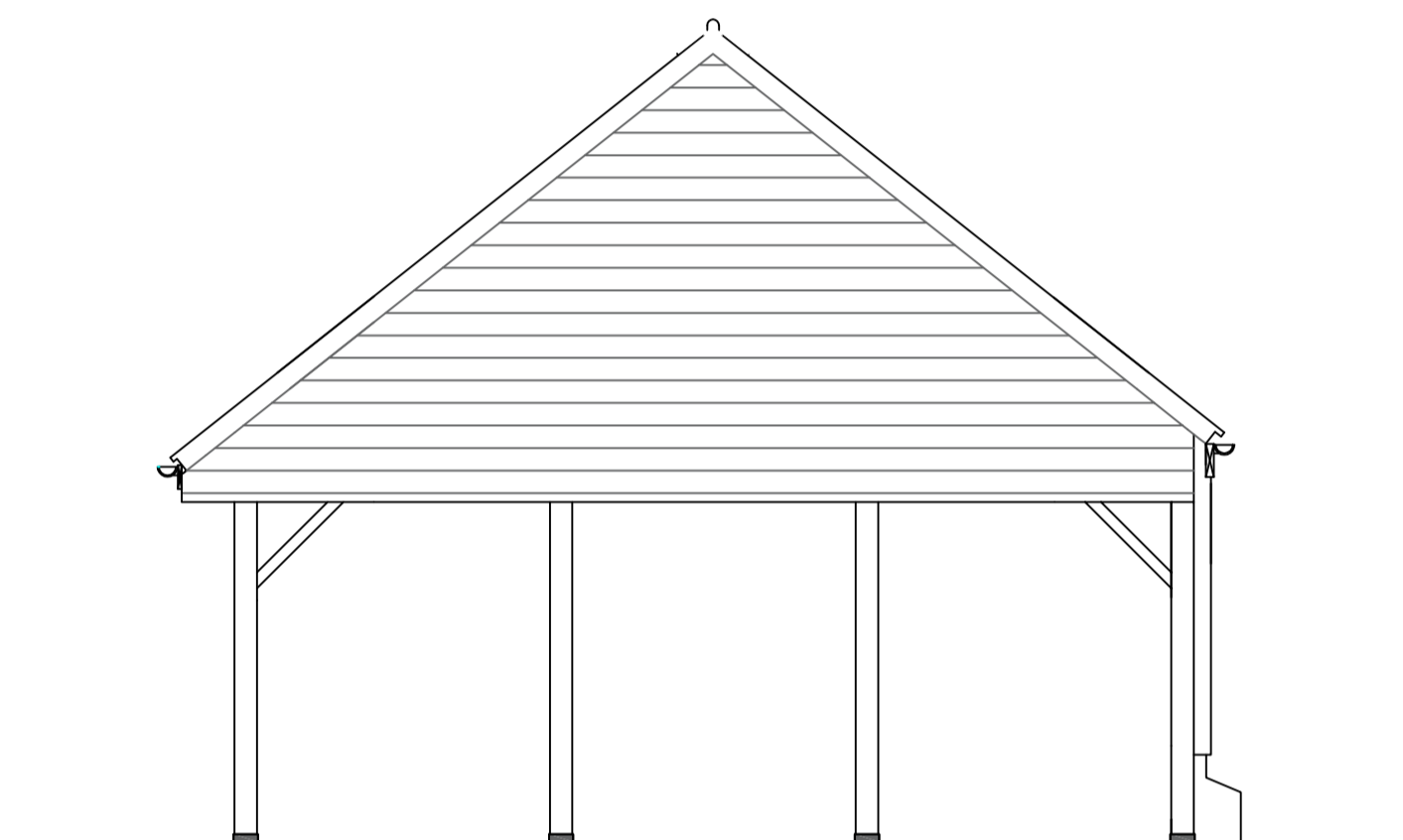
NORTH ELEVATION



WEST ELEVATION



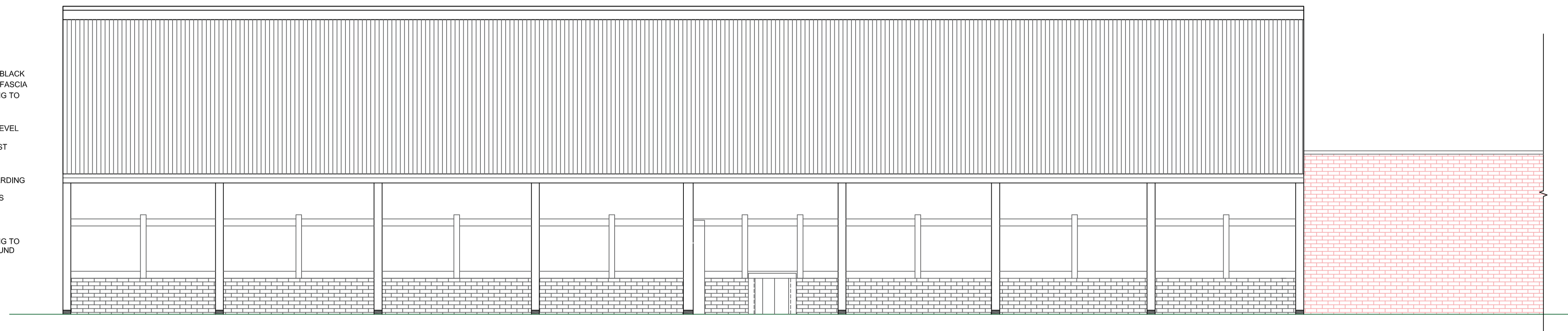
SECTION A-A



EAST ELEVATION

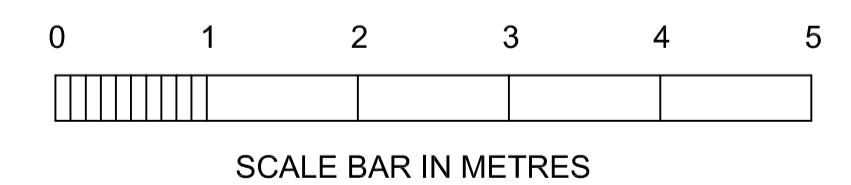
EXTERNAL FINISHES

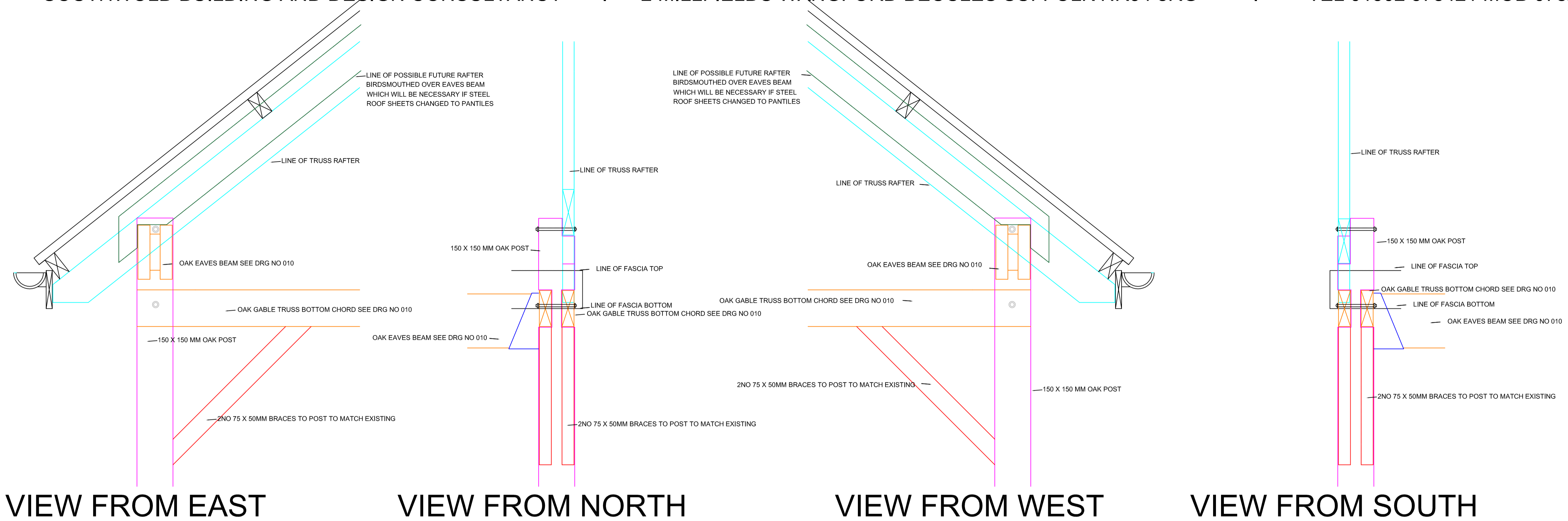
- ROOF  
CORRUGATED STEEL SHEETING WITH MATT BLACK FINISH COMPLETE WITH ALL MATCHING RIDGE, EAVES, VERGE AND CORNER TRIMS
- WALLS  
NORTH WALL UPPER CLAD WITH CORRUGATED STEEL SHEETING WITH MATT BLACK FINISH COMPLETE WITH ALL CORNER TRIMS BELOW BLACK STAINED TIMBER FASCIA WITH BLACK ALUMINIUM HALF ROUND GUTTER AND DOWNPIPES DISCHARGING TO DITCH VIA UNDERGROUND UPVC PIPEWORK
- NORTH WALL LOWER SOFT RED SUFFOLK BRICKS IN LIME MORTAR TO LOW LEVEL WALLING AND BUTTRESSES WITH TIMBER LIVESTOCK DOOR RETAINED LOWER SECTION OF OAK POSTS EXPOSED AT EAST END IN BLACK STEEL POST SHOES MIN 50MM ABOVE FINISHED GL
- EAST AND WEST GABLES CLAD WITH SOFTWOOD TREATED HORIZONTAL BOARDING TO MATCH ADJACENT THATCHED BARN CLADDING OAK POSTS EXPOSED BELOW GABLE CLADDING IN BLACK STEEL POST SHOES MIN 50MM ABOVE FINISHED GL
- SOUTH WALL TO HAVE BLACK STAINED TIMBER FASCIA WITH BLACK ALUMINIUM HALF ROUND GUTTER AND DOWNPIPES DISCHARGING TO NEW SOAKAWAY BETWEEN HAY BARN AND THATCHED BARN VIA UNDERGROUND UPVC PIPEWORK OAK POSTS EXPOSED BELOW FASCIA IN BLACK STEEL POST SHOES MIN 50MM ABOVE FINISHED GL



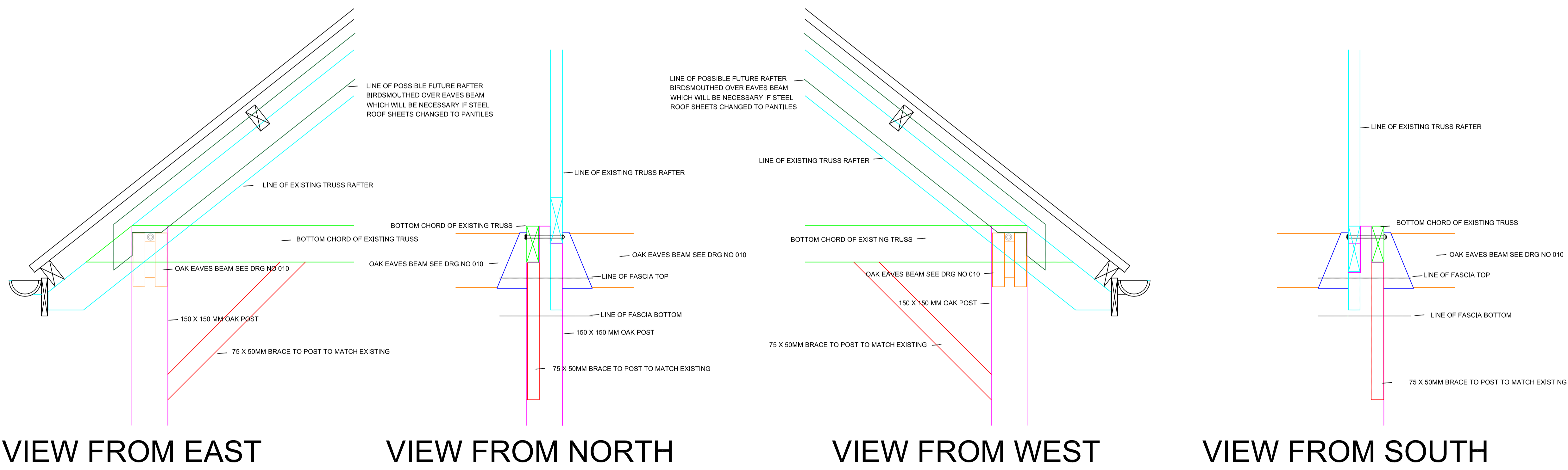
SOUTH ELEVATION

HAY BARN ELEVATIONS & SECTION AS PROPOSED

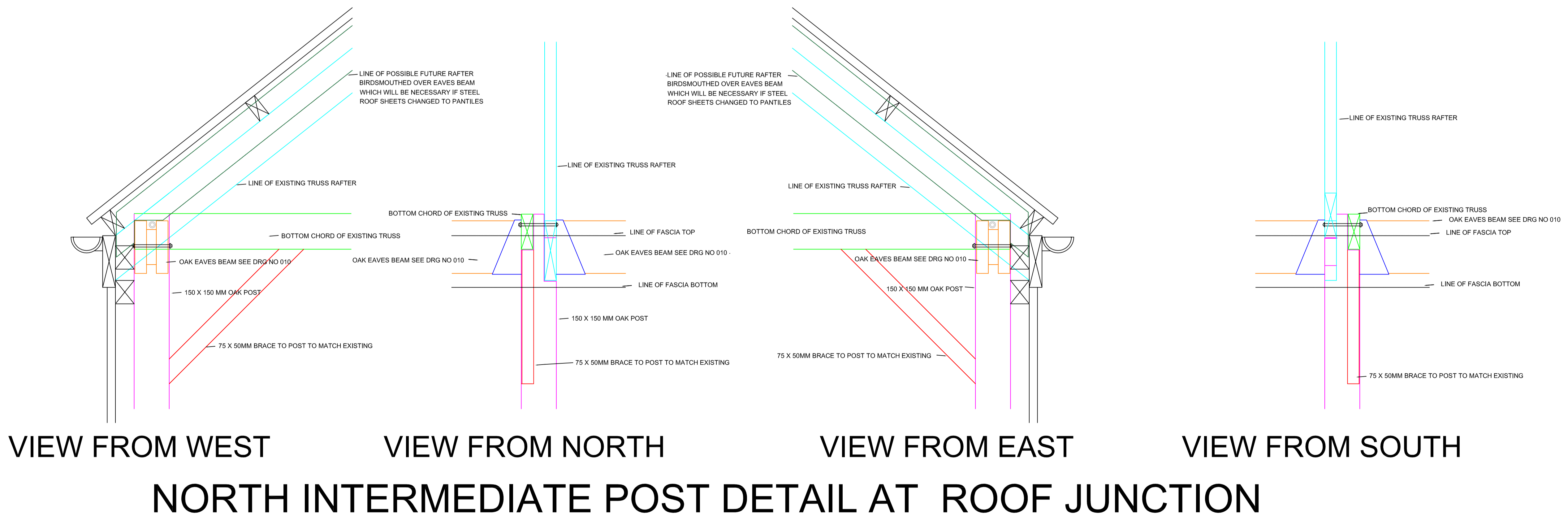
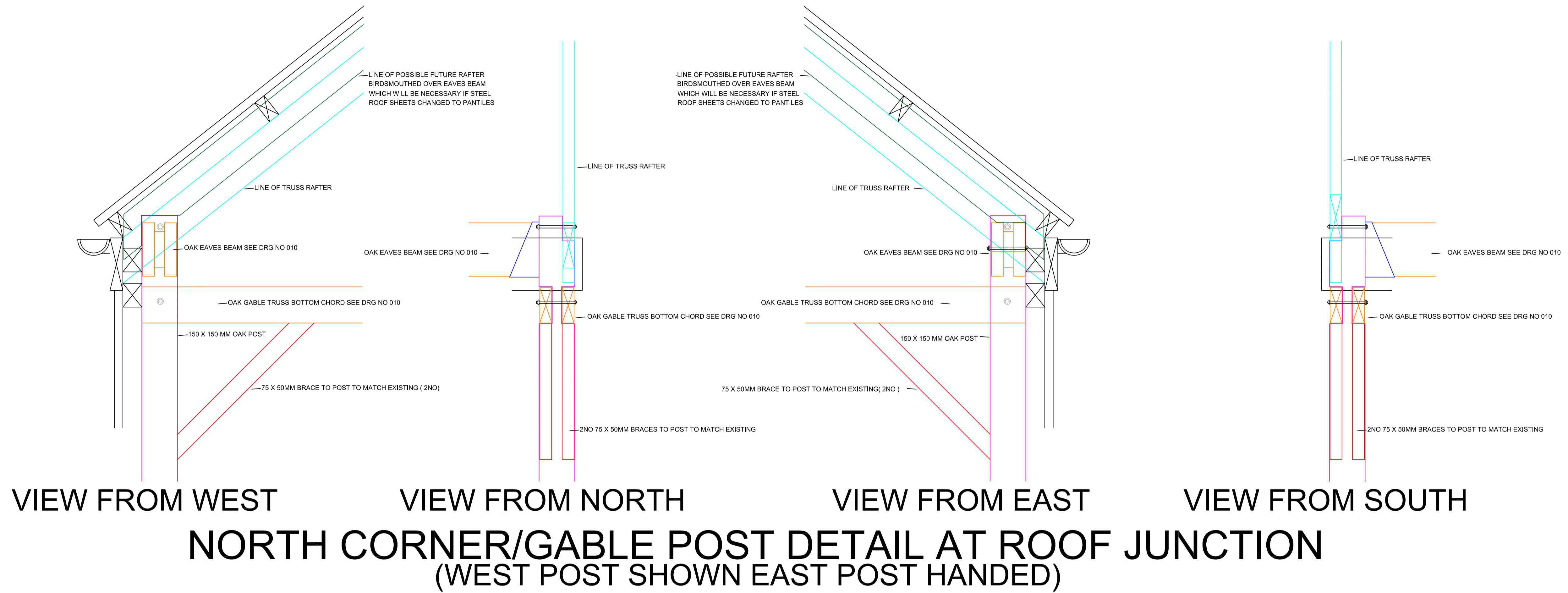


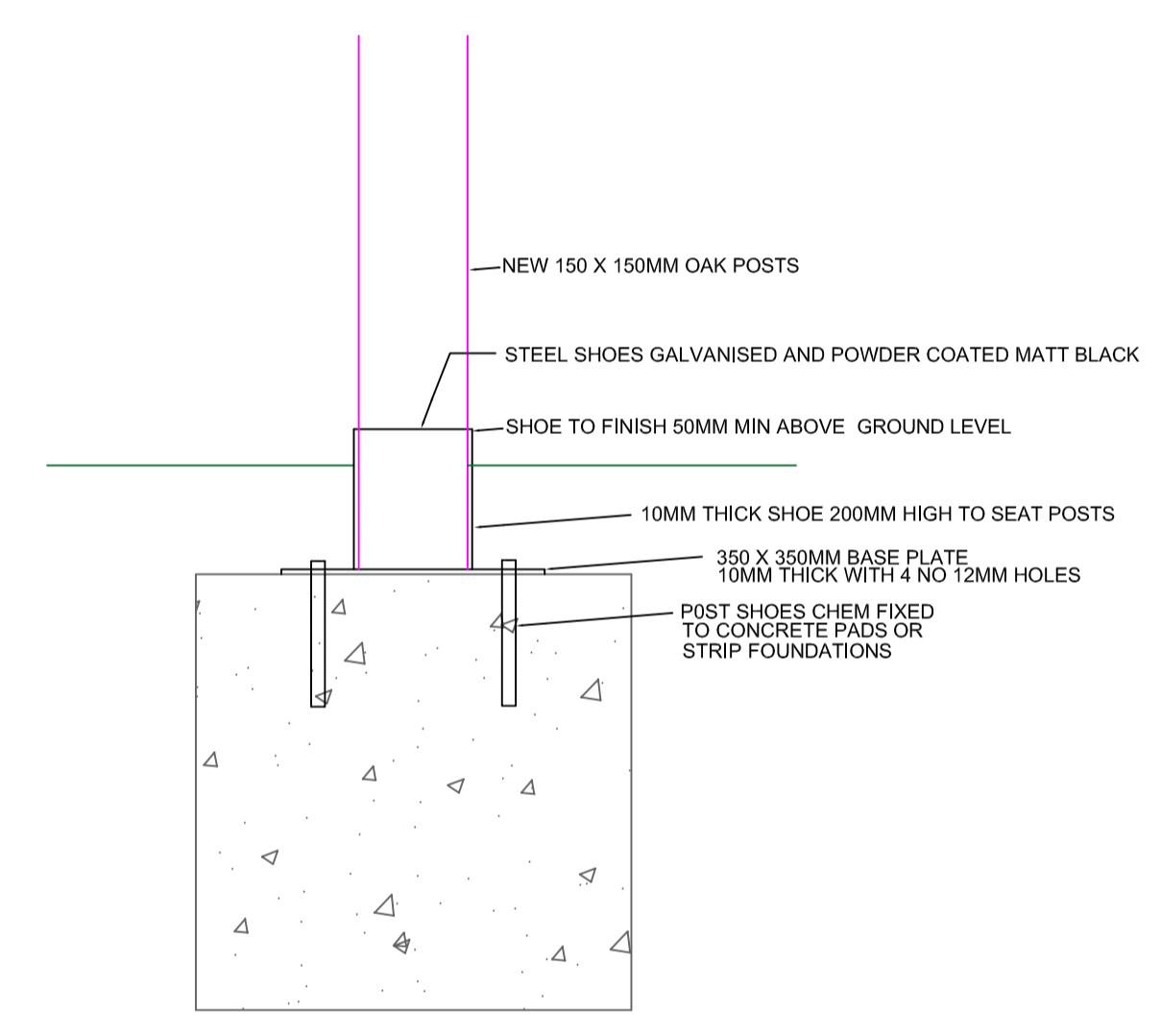
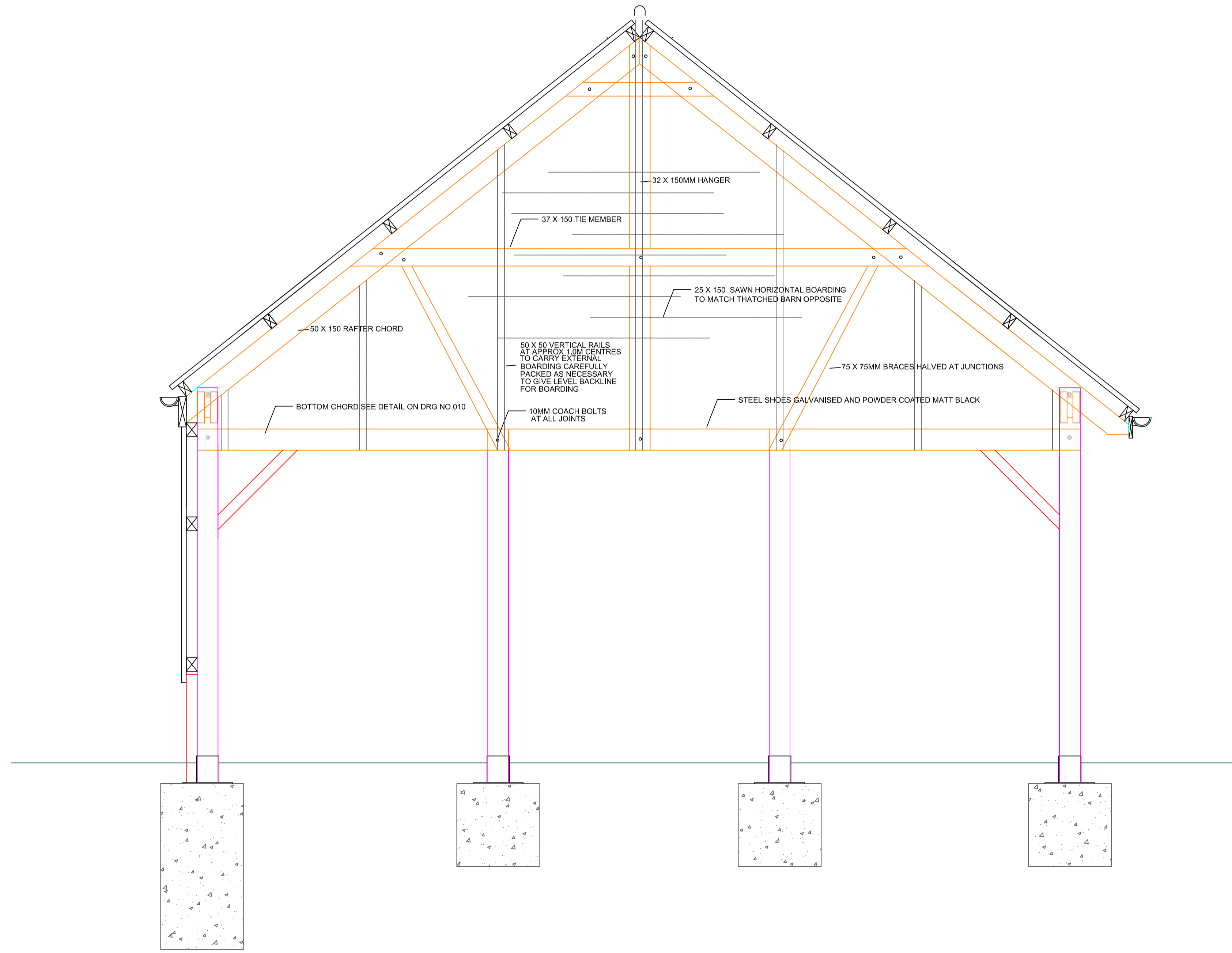


**SOUTH CORNER/GABLE POST DETAIL AT ROOF JUNCTION**  
 (WEST POST SHOWN EAST POST HANDED)



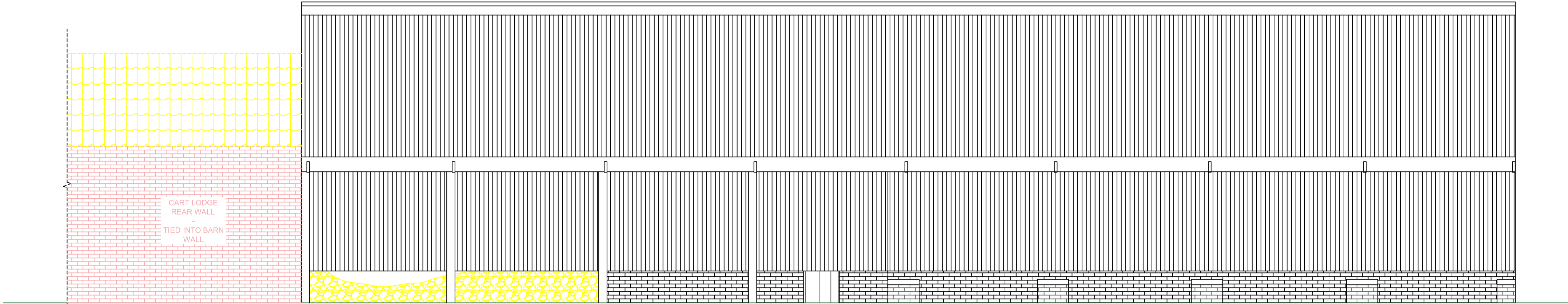
**SOUTH INTERMEDIATE POST DETAIL AT ROOF JUNCTION**



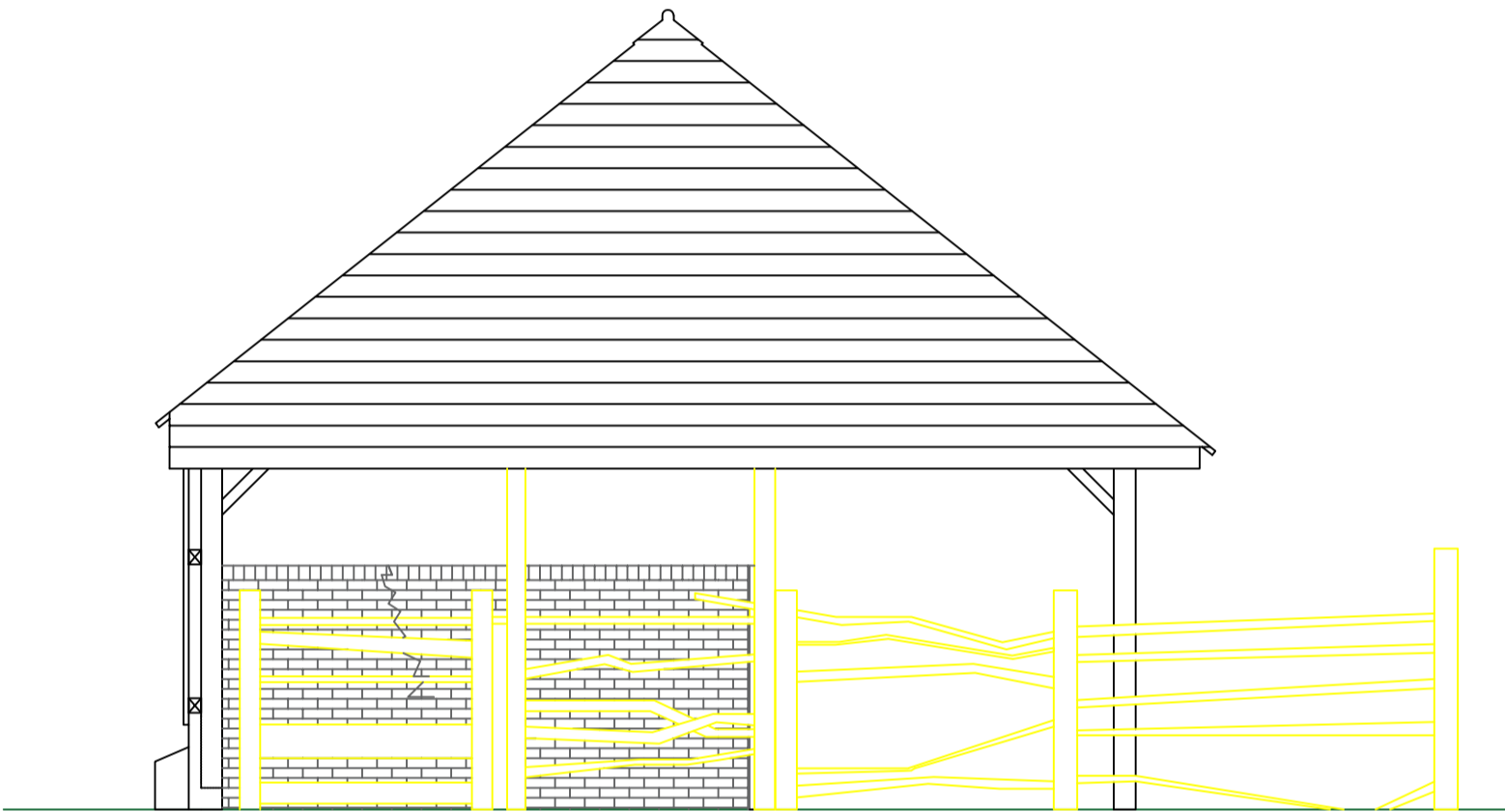


**TYPICAL POST BASE  
DETAIL 1: 10 SCALE**

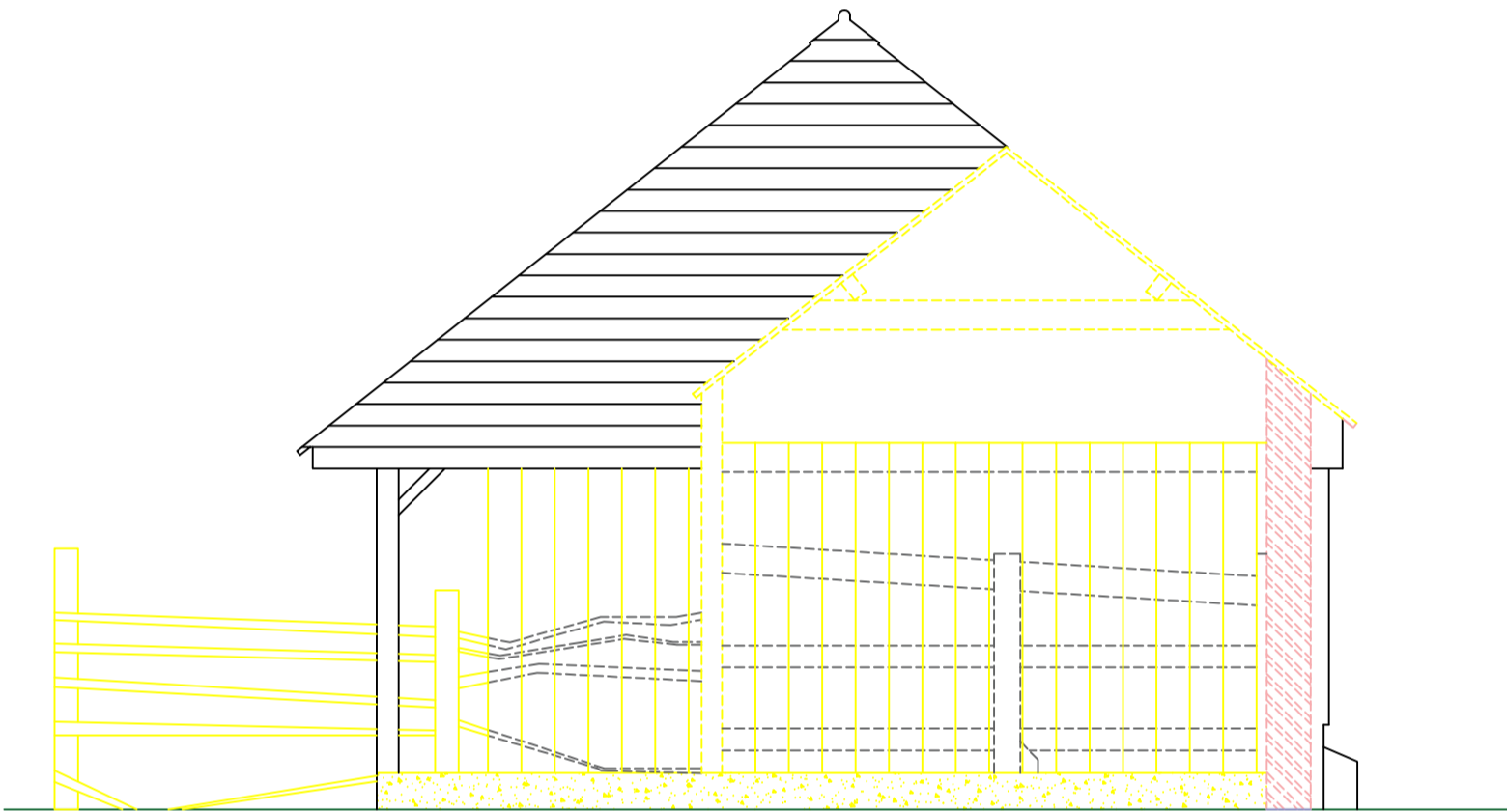
**WEST GABLE NEW POSTS, FRAMING AND EXTERNAL BOARDING 1 : 20 SCALE  
(WEST GABLE SHOWN EAST GABLE HANDED)**



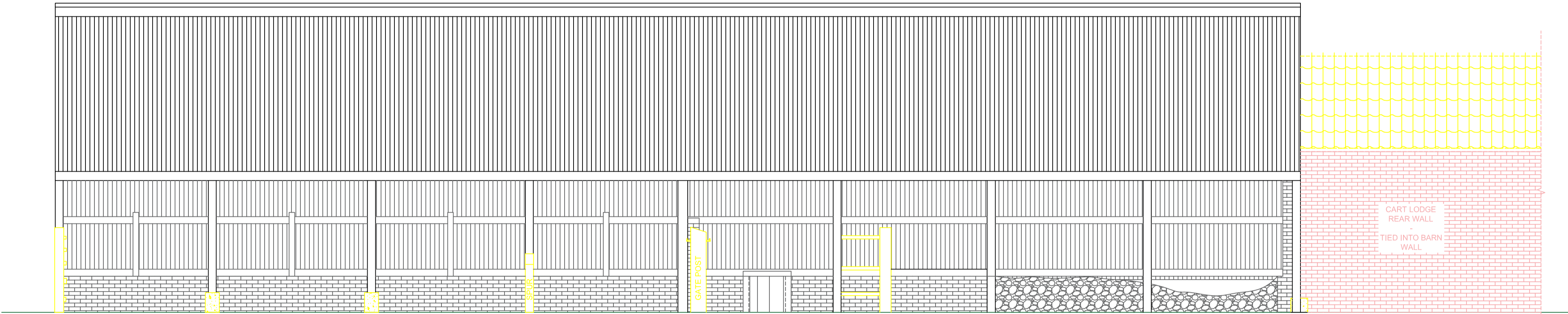
NORTH ELEVATION



WEST ELEVATION

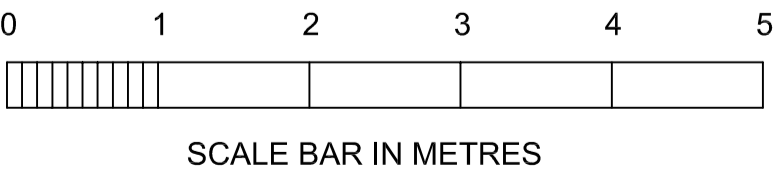


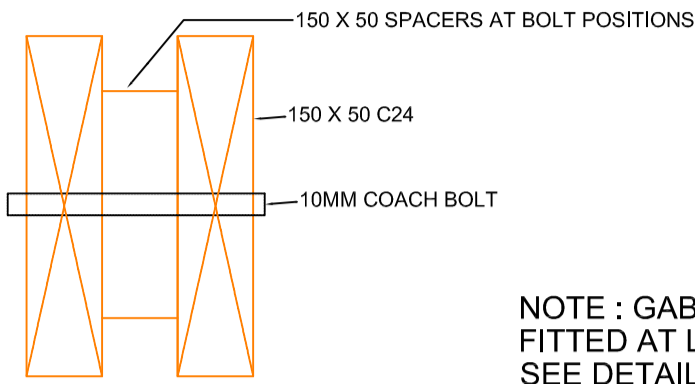
EAST ELEVATION



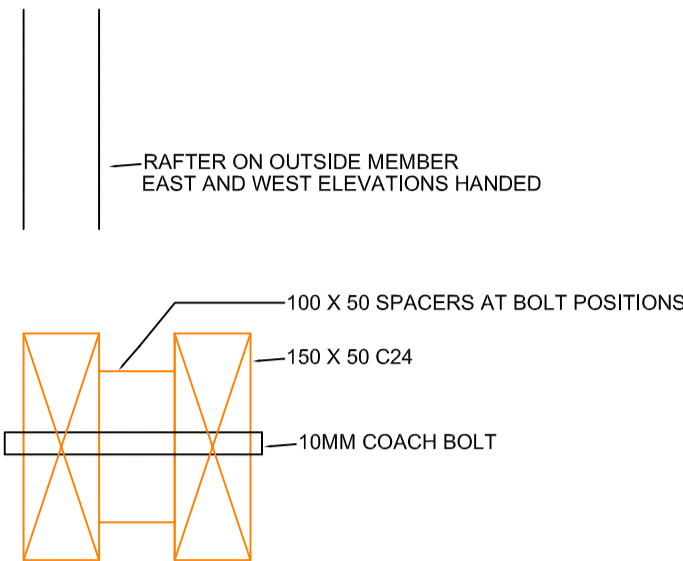
SOUTH ELEVATION

# HAY BARN EXISTING ELEVATIONS SHOWING REDUNDANT ITEMS IN YELLOW





OAK EAVES BEAM BETWEEN POSTS SUPPORTED AT POSTS ON TWIN JOIST HANGERS EACH END COACH BOLTED BACK TO POSTS/RAFTERS

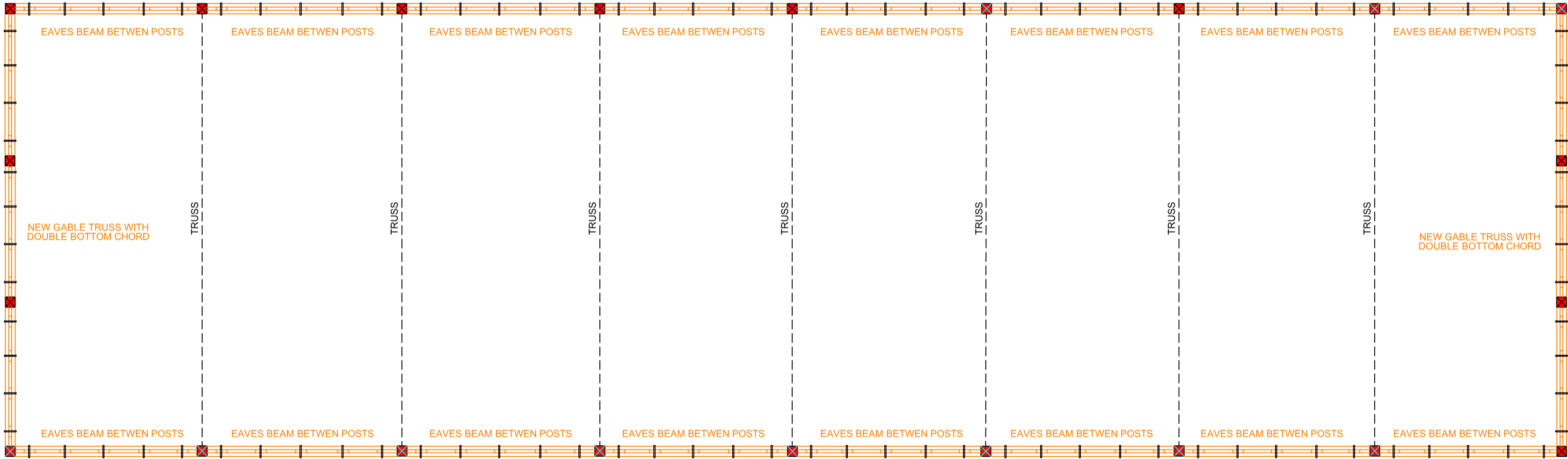


OAK BOTTOM CHORD OF GABLE TRUSS LET INTO CORNER POSTS AND INTERMEDIATE POSTS

NOTE : GABLE TRUSS BOTTOM CHORDS ARE FITTED AT LOWER LEVEL THAN EAVES BEAMS SEE DETAILS ON DRAWING NOS 006 AND 007

1 : 5 SCALE

1 : 5 SCALE



# HAY BARN STRENGTHENING AND FUTURE PROOFING MEASURES

