



Solar panels

SOUTH ELEVATION




WEST ELEVATION

Entrance door as per original approval

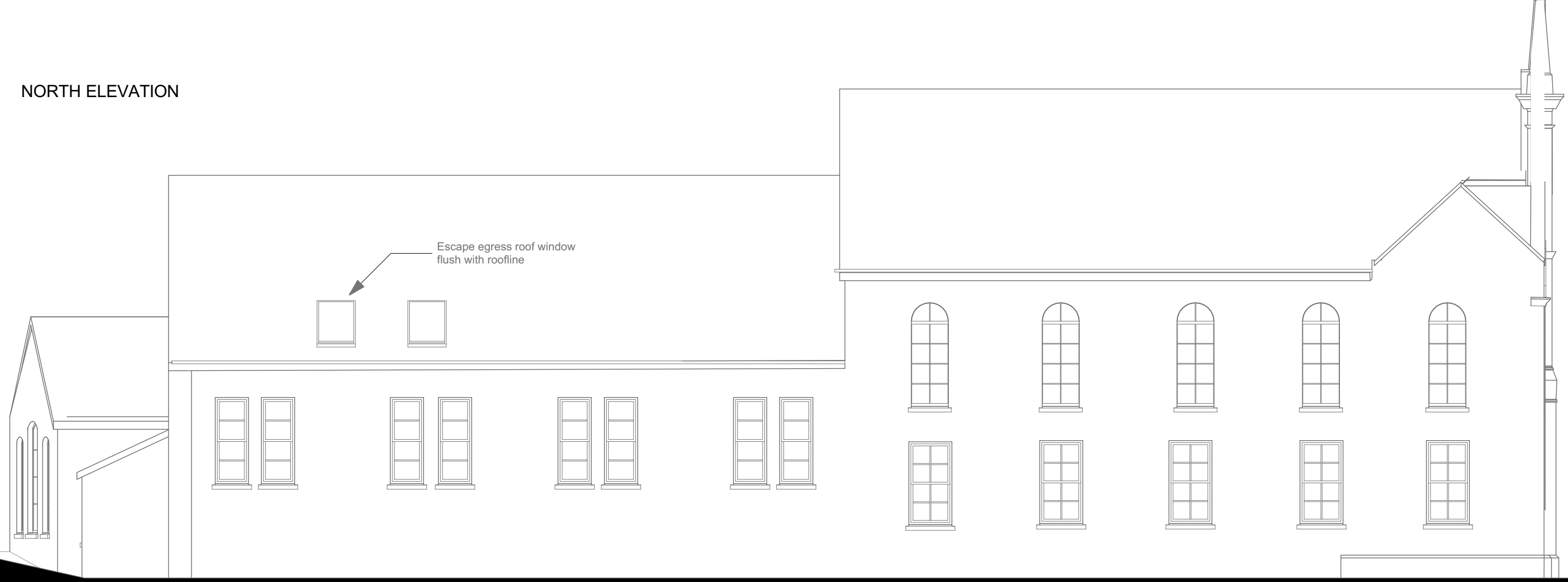
double door opening retained externally
part glazed for bathroom
with window and fixed panel below
insulated internally with window board
and stud wall to low level

Window detail as per original approval

PROPOSED VARIATION TO EXISTING APPROVAL FOR CHAPEL CONVERSION,
SOLAR PANEL INSTALLATION AND ADDITIONAL CONVERSION FOR HOLIDAY
ACCOMMODATION, LONGBRIDGE STREET, LLANIDLOES.

Frederick Carter Architectural Services 	Date	11.10.2023	scale	1:100
	Dwg No	P/2023/101/01		REVISION

NORTH ELEVATION



EAST ELEVATION



PROPOSED VARIATION TO EXISTING APPROVAL FOR CHAPEL CONVERSION, SOLAR PANEL INSTALLATION AND ADDITIONAL CONVERSION FOR HOLIDAY ACCOMMODATION, LONGBRIDGE STREET, LLANIDLOES.

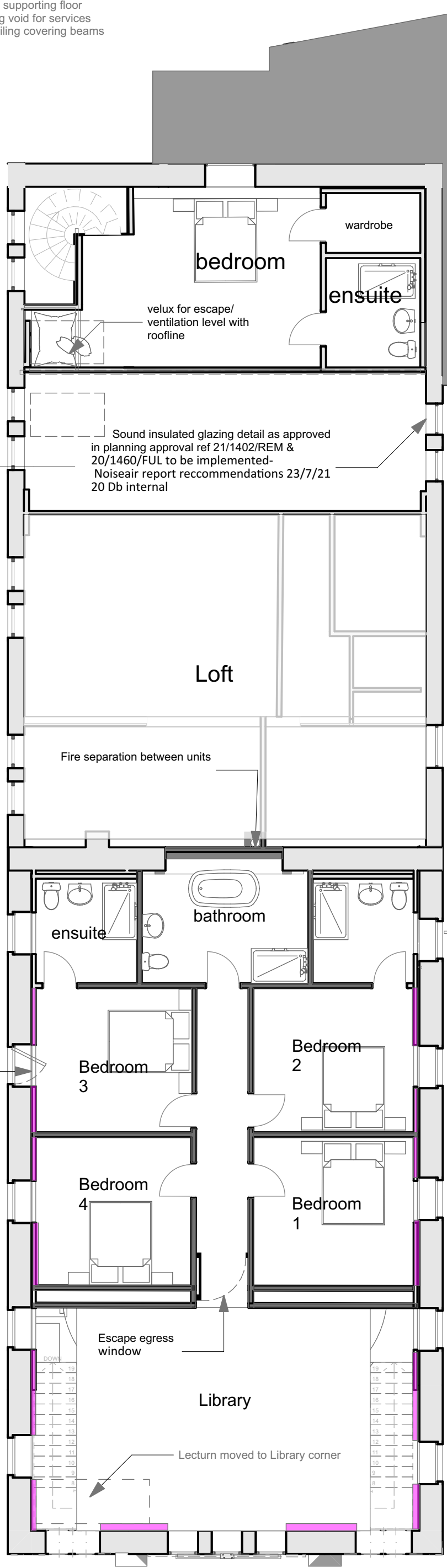
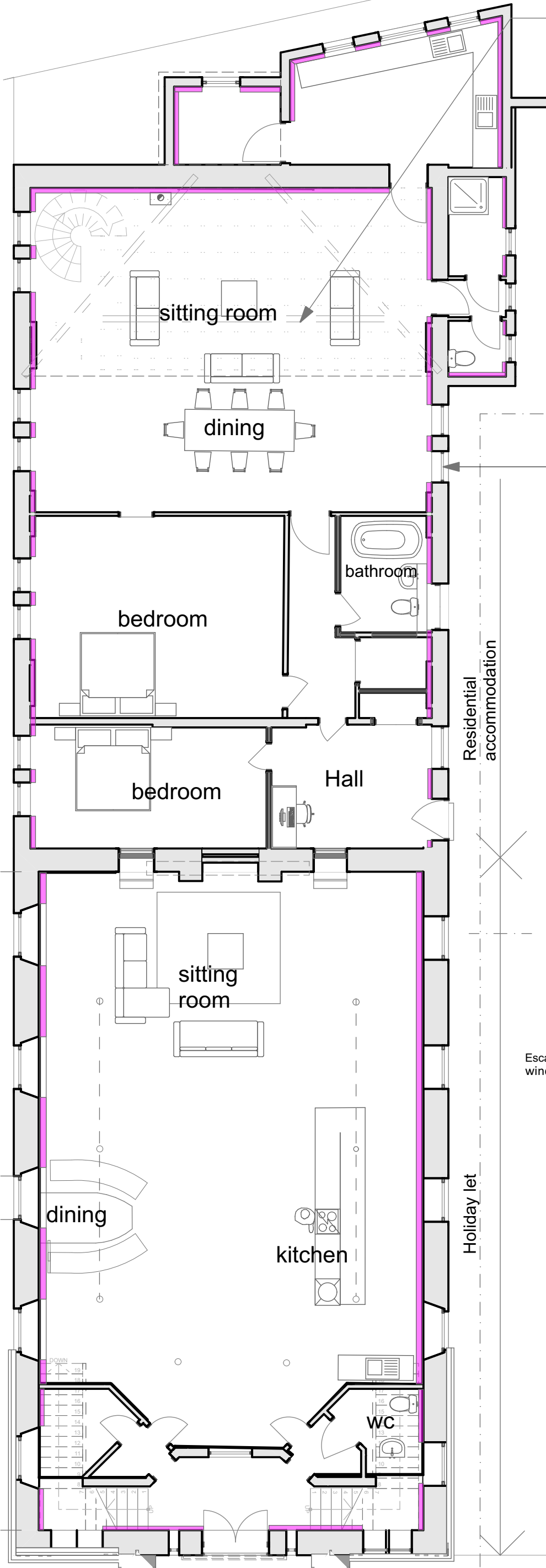
Frederick Carter Architectural
Services



Date	11.8.2023	scale	1:100
------	-----------	-------	-------

Dwg No	P/2023/101/02	REVISION	
--------	---------------	----------	--

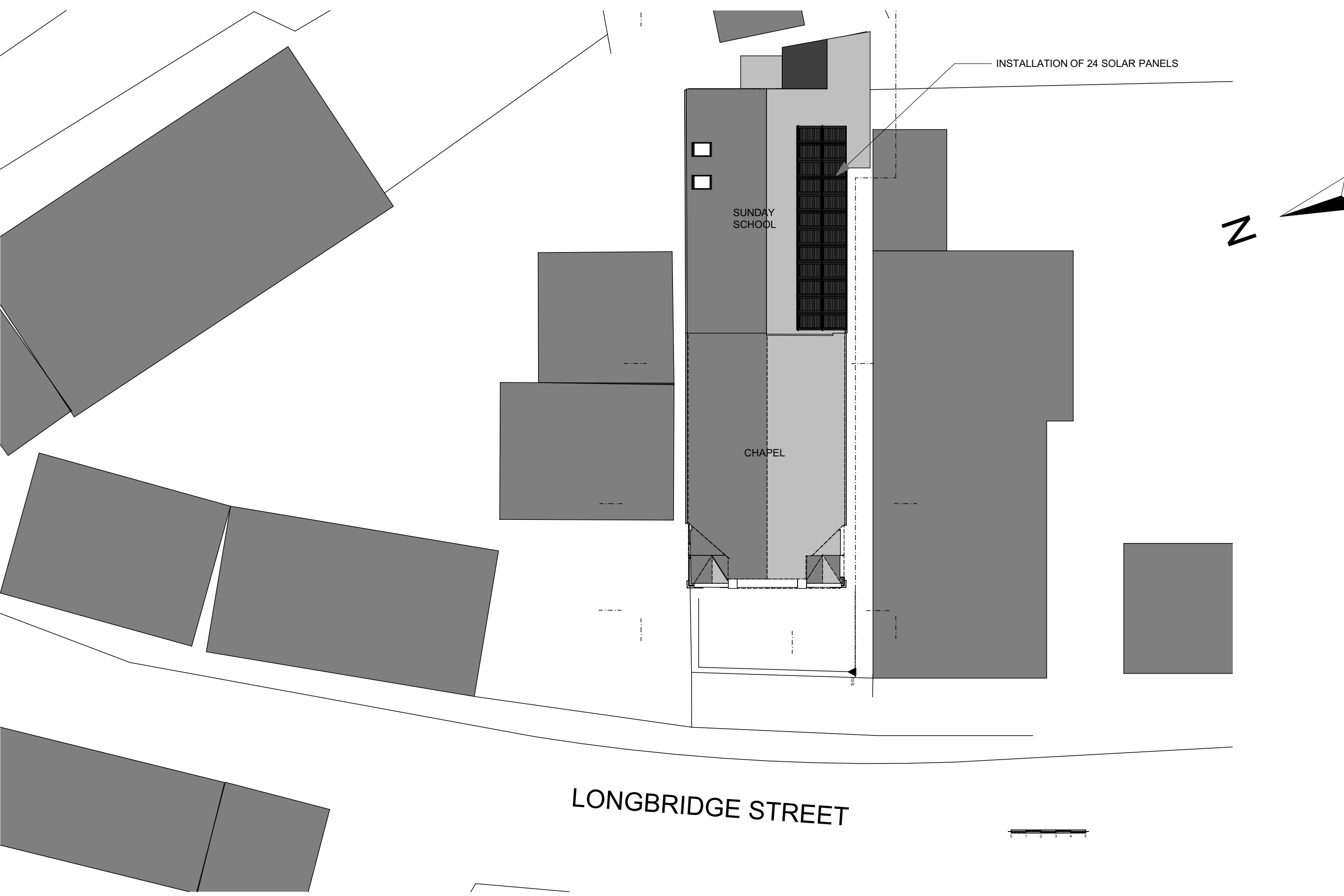
steel beams supporting floor above ceiling void for services and flush ceiling covering beams



PROPOSED VARIATION TO EXISTING APPROVAL FOR CHAPEL CONVERSION, SOLAR PANEL INSTALLATION AND ADDITIONAL CONVERSION FOR HOLIDAY ACCOMMODATION, LONGBRIDGE STREET, LLANIDLOES.

Frederick Carter Architectural Services 

Date	25.9.2023	scale	1:100
Dwg No	P/2023/101/03	REVISION	



BLOCK PLAN

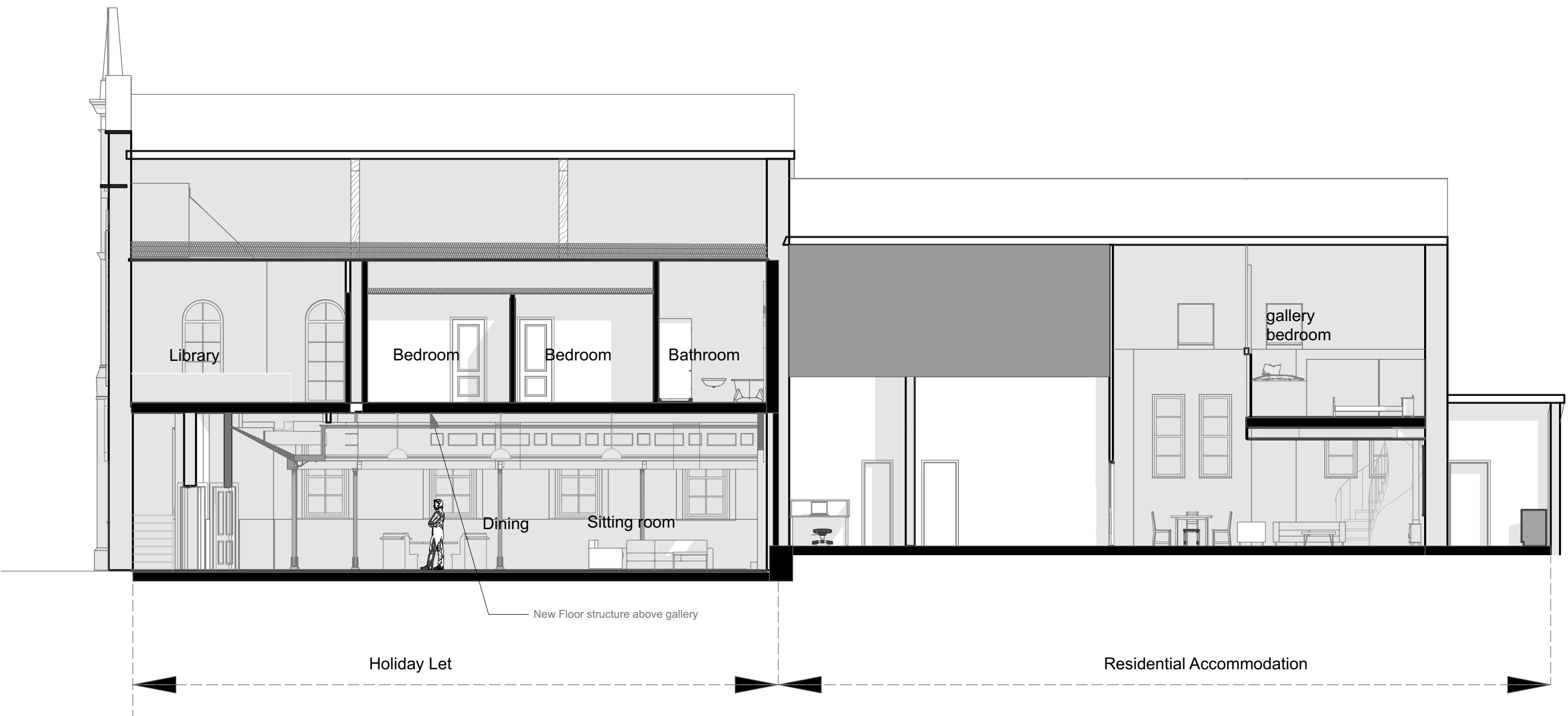
PROPOSED VARIATION TO EXISTING APPROVAL FOR CHAPEL CONVERSION, SOLAR PANEL INSTALLATION AND ADDITIONAL CONVERSION FOR HOLIDAY ACCOMMODATION, LONGBRIDGE STREET, LLANIDLOES.

Frederick Carter Architectural
Services



Date	11.8.2023	scale	1:250
------	-----------	-------	-------

Dwg No	P/2023/101/04	REVISION	
--------	---------------	----------	--



Section A-A

PROPOSED VARIATION TO EXISTING APPROVAL FOR CHAPEL CONVERSION, SOLAR PANEL INSTALLATION AND ADDITIONAL CONVERSION FOR HOLIDAY ACCOMMODATION, LONGBRIDGE STREET, LLANIDLOES.

Frederick Carter Architectural
Services



Date	11.8.2023	scale	1:250
------	-----------	-------	-------

Dwg No	P/2023/101/04	REVISION	
--------	---------------	----------	--