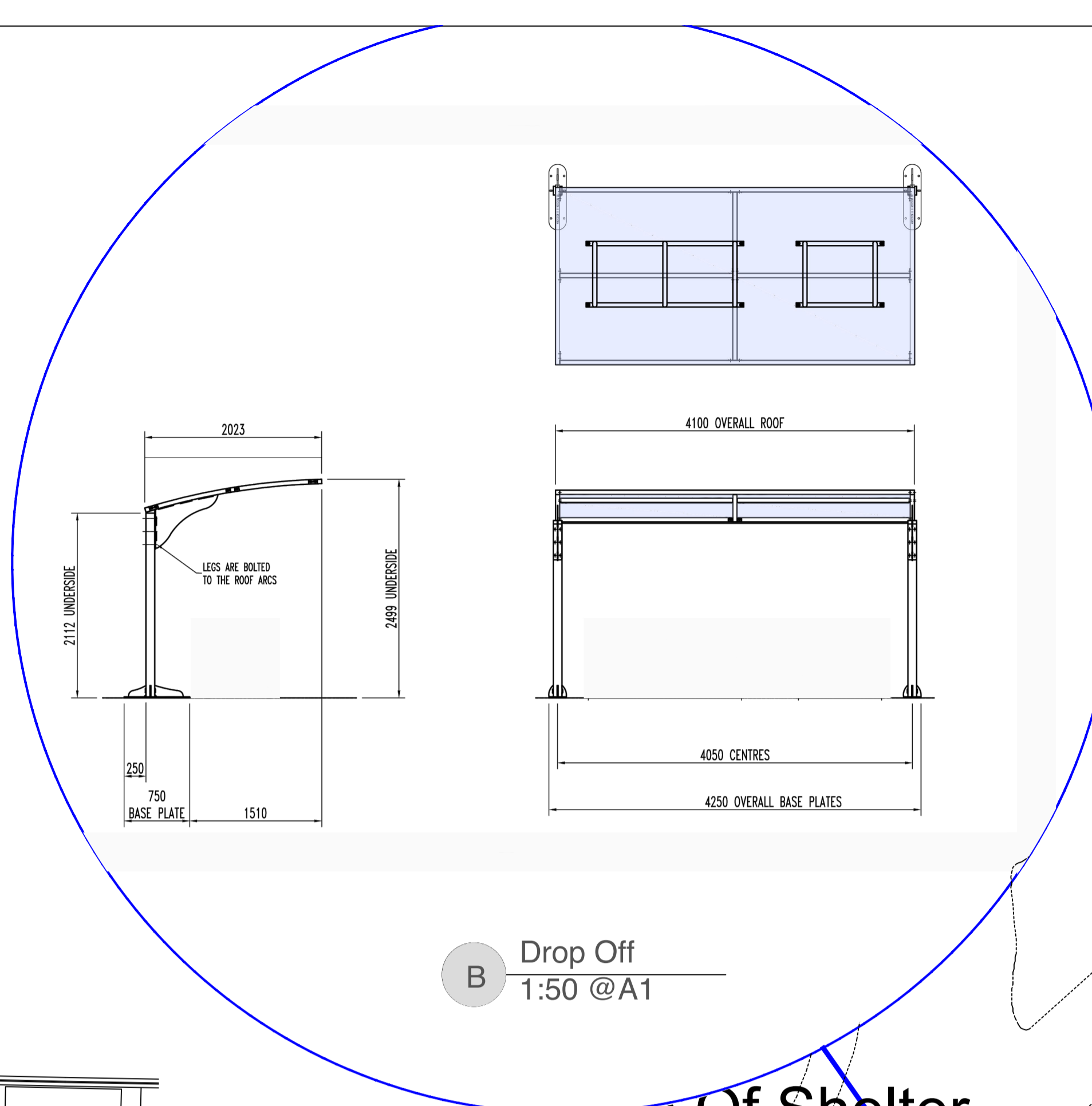


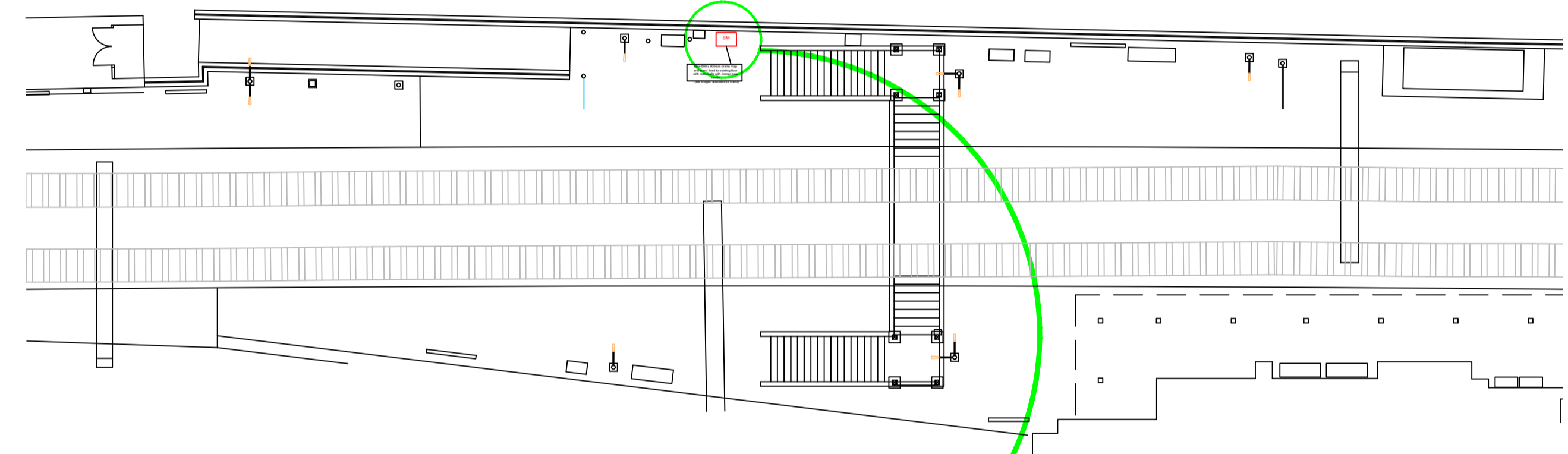
Detail B

100mm x 100mm strongbox square section support posts
 50mm x 50mm strongbox section roof framework,
 3mm Pet-g UV2 roof sheets.
 Framework produced from steel strongbox section to EN 10219:2006
 CPA Assured Galvanising applied to inside and outside surfaces as standard,
 and is a corrosion resistant zinc coating to BSEN1461
 Pet-G UV2 clear sheeting
 Mechanically fixed to concrete footings

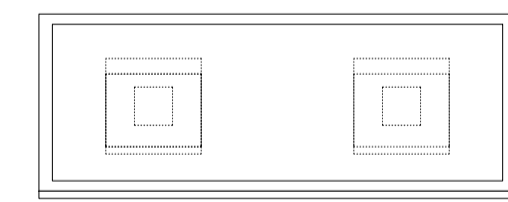


B Drop Off
 1:50 @A1

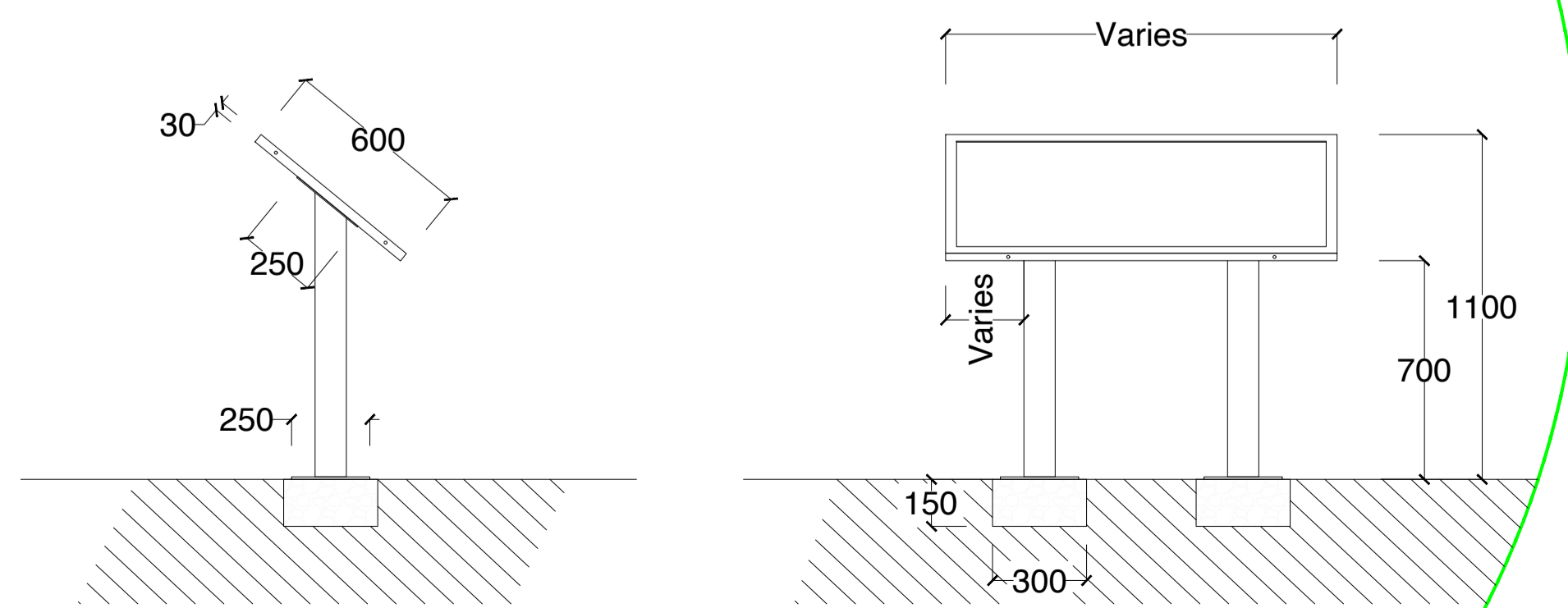
PLATFORM 1



PLATFORM 2



A Braille Stands
 1:20 @A1

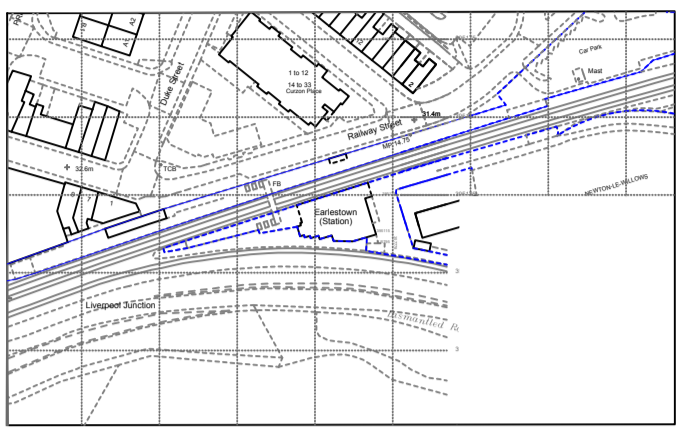


Detail A

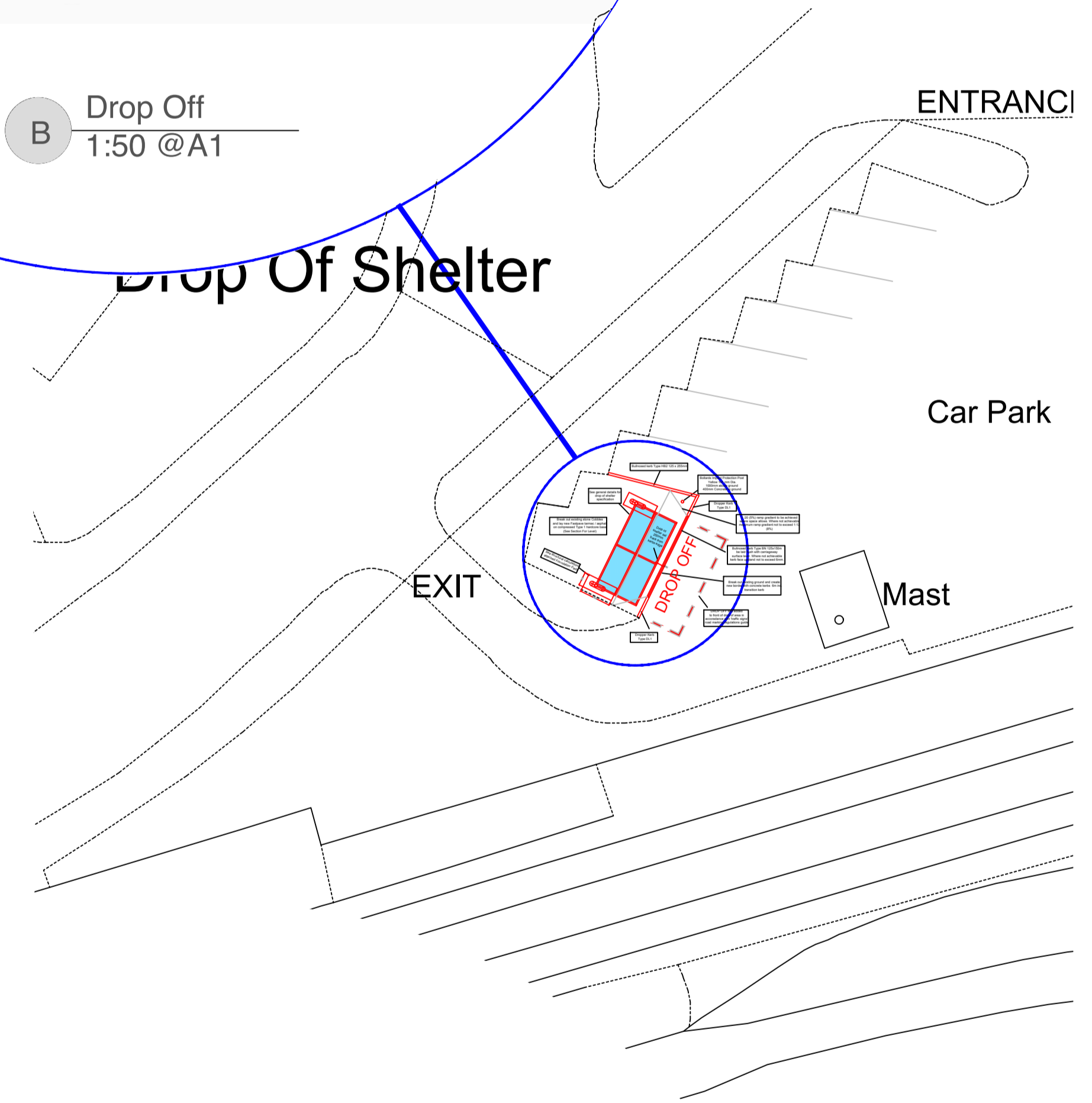
35mm Frame bezel on a 250x250x4 steel plate
 100x100x3 box steel legs
 mechanically fixed to 300x300x50 concrete foundation
 PPC to TOC colours

NOTES

1. Do not measure from drawings for installation purposes



Location 1:1250



Revision	0.1	Drawing created.	SA	15.09.23	
Location Figure					
THE INPUT GROUP					
Sheet Size	A1	Scale	As indicated @A1	Status	IDC
Contractor Name	n/a	Based on Drawing No.	n/a	15.09.23	15.09.23
Project	Accessibility Package				
Drawing Title	Earlestown Details				
Drawing No	GEN-001				
Drawn by	SA	Checked by	SA	Rev	P01