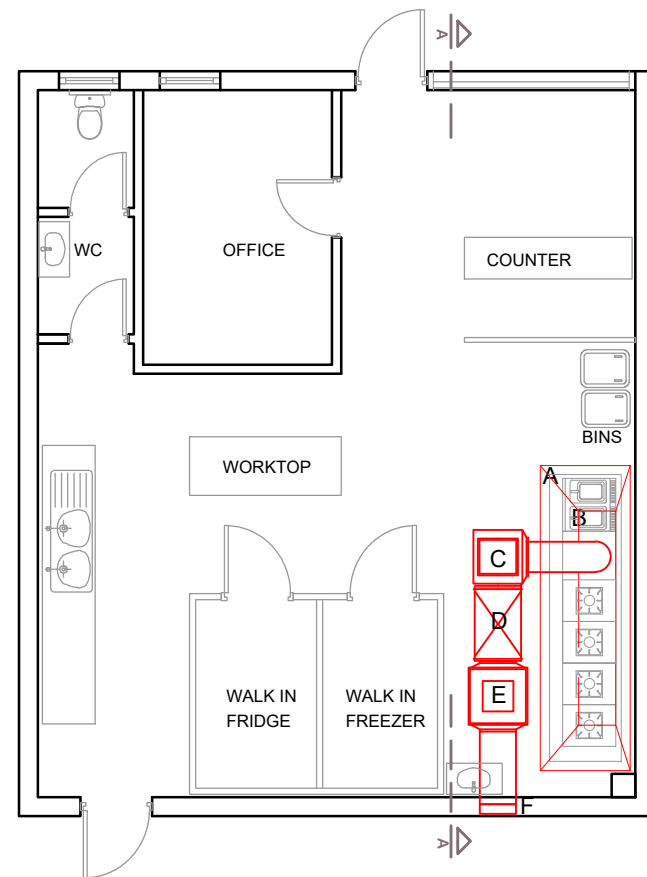
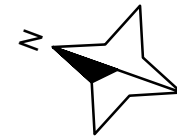


EXISTING GROUND FLOOR PLAN

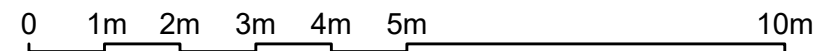


PROPOSED GROUND FLOOR PLAN

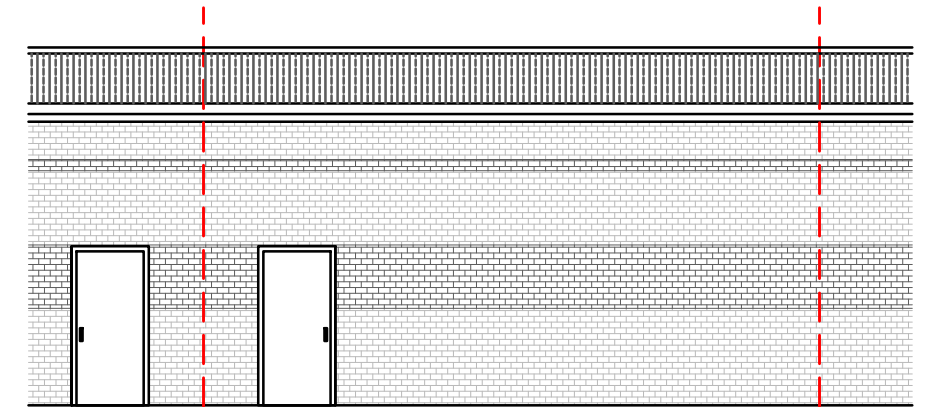


NOTES

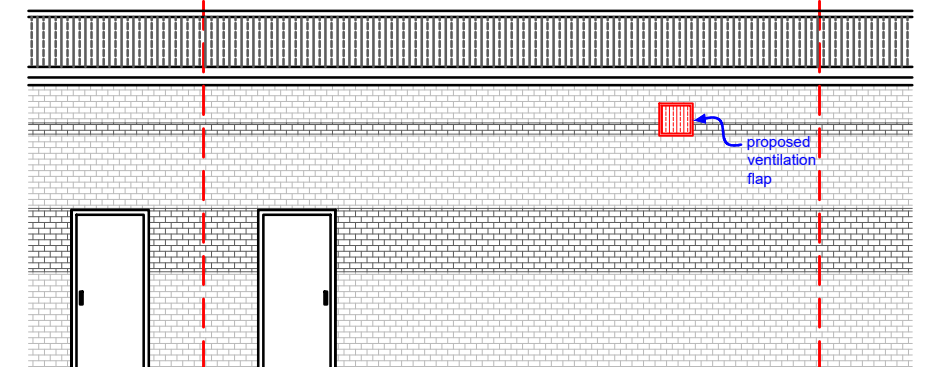
- A. Cooking particulates and odours
- B. Canopy and Grease Filters
- C. Particulate Control Unit ESP3000
- D. Carbon Filter Units 12X SiteSafe PA240824
- E. Helios 560 Fan
- F. Ventilation Flap



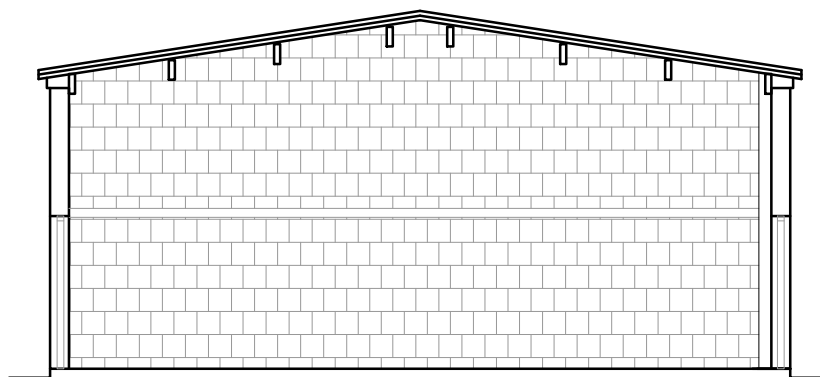
EXISTING AND PROPOSED FRONT ELEVATION (No Change)



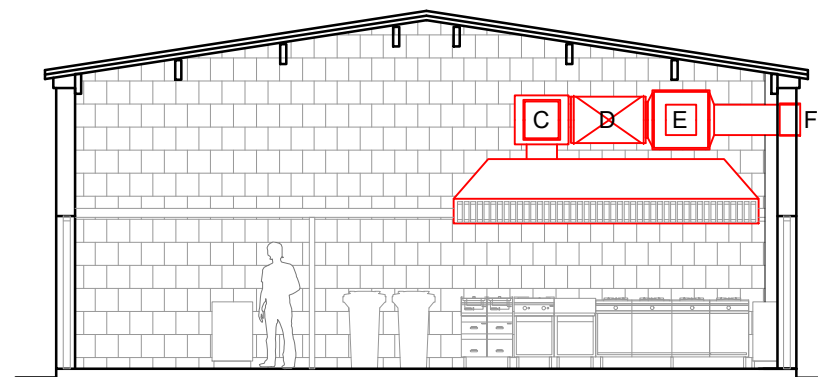
EXISTING REAR ELEVATION



PROPOSED REAR ELEVATION



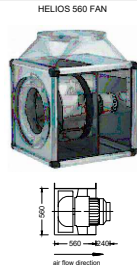
EXISTING A-A SECTION



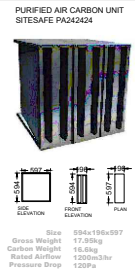
PROPOSED A-A SECTION

**HELIOS 560 FAN**  
A great multifunctional box fan from German manufacturer Helios Ventilation. This fan is suitable for medium to higher airflow volumes against high resistances in every type of ventilation system. The T120 Range is also suitable for the extraction of dirty, humid and hot air up to a maximum of 120Deg C.

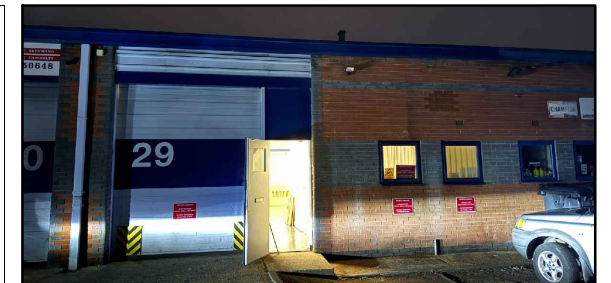
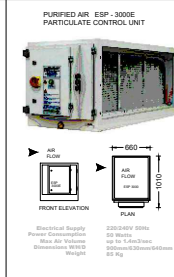
Self-supporting frame construction from aluminium hollow profiles. Double walled side panels with 20mm thick temperature insulating and flame retardant mineral wool. Steel backward curved centrifugal impeller 90 Degree or straight through air path possible. Except T120 range which is only 90 degree air path. T120 range only has motor out of air stream. Suitable for outdoors with appropriate weather cow. All sizes except GBD630/4 T120 can be speed controlled.



**PURIFIED AIR CARBON FILTERS**  
The second stage of control will be Purified Air's Sitesafe carbon filters; these innovative carbon units measure 594x196x597mm, three combining to 594x594x597mm, directly replacing original carbon blocks whilst providing exactly the same filter performance as an existing full size cell. Their advantage is that they only weigh 18kg each against the 68kg of original blocks. This takes the strain out of fitting and servicing, allowing only one engineer to complete the task where two had been previously required. Sitesafe carbon filters use panels of activated carbon to remove the malodorous gases within the commercial kitchen extract duct through the process of chemical adsorption. By installing Purified Air ESP 3000 E units before, Sitesafe filters, the carbon life span is greatly increased, allowing it to nullify malodours at optimum efficiency for much longer.



**ESP 3000E**  
The first stage of control will be Purified Air's Electrostatic Precipitator units in a double pass formation. ESP 3000E's have been specifically designed for kitchen extract and not modified from industrial use, they have integral sumps to collect the oil, grease and smoke particles filtered out of the exhaust; this not only simplifies servicing but eradicates potentially dangerous spillage from the bottom of the units and greatly cuts down on flammable build-ups within the duct run. The ionisation voltage has been designed to run at a negative potential which enhances the ionisation of particles and also produces more Ozone which is helpful in reducing odours in kitchen applications. ESP 3000E units fit in-line with the kitchen ducting and can be configured modularly to cope with all extract volume requirements. The Electrostatic Precipitator is a very efficient means for separating the particulate phase; operating efficiency when clean can be as high as 98% at particle sizes down to 0.01 micron. The Electrostatic Precipitator does not present a high-pressure loss (175PA approx. dependant on air flow). This gives a specific advantage in that most standard Kitchen extractor fans will have the capability of overcoming this small differential. This is particularly advantageous when it is considered that if the pressure loss were high larger noisier fans would probably be necessary resulting in potential noise pollution.



**NARTS**  
Voice of Turkish & Kurdish Food Industry in Britain  
53 Stoke Newington High Street, London N16 8EL  
Tel: 020 7241 3636 | Mob: 07940 414 890 | www.narts.org.uk | info@narts.org.uk

Copyright© Narts Architecture is the subject of Intellectual Property Rights including copyright and design right and shall not be reproduced, copied, loaned or submitted to other party without the written consent of Narts Architecture.

GENERAL NOTES:

Address: **Unit 29 Stevenage Enterprise Centre Orchard Road STEVENAGE SG1 3HH**  
Drawing Number and Drawing Name: **23.12- D1 Existing and Proposed Plans**

DRAWING DATE: 22.12.2023  
SCALE: 1/100 @A3

TOTAL AREA: **73SQM**  
SHEET: 1